

U.S. PUBLIC LAND SURVEY MONUMENT RECORD

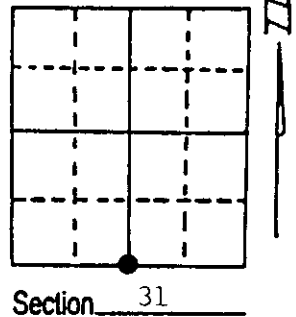
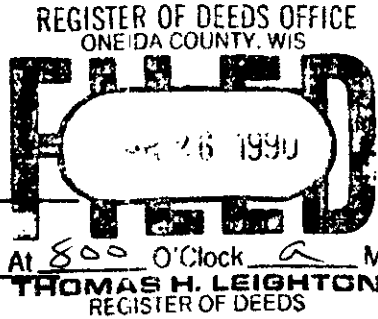
Note: This form is intended and designed to fulfill all requirements of Wisconsin Administrative Code, Chapter A-E 7.08 U.S. Public Land Survey Monument Record (3) (a) (b) (c) (d) (e) (f) (g) (h) (i). An additional sheet may be added if necessary to conform with said requirements.

(a) Corner location: Township 38 North

Range 8 East/West

Town/City/Village Newbold

County Oneida



(b) (f) (g) (h) Description of monument found at this corner and if it was accepted, state all evidence (material, testimonial, occupational, plats, records, other monuments) used as a basis for accepting. If not accepted or if nothing was found, state evidence used as basis for establishing location. If reestablished through lost corner proportionate methods, indicate all monuments, distances and directions used to establish.

Sept. 5th, 1860 - Alfred Millard, Deputy Surveyor, set $\frac{1}{4}$ section post. Original bearing trees: Tamarack 10", N25°E, 27 links; Spruce 9", S10°W, 9 links.

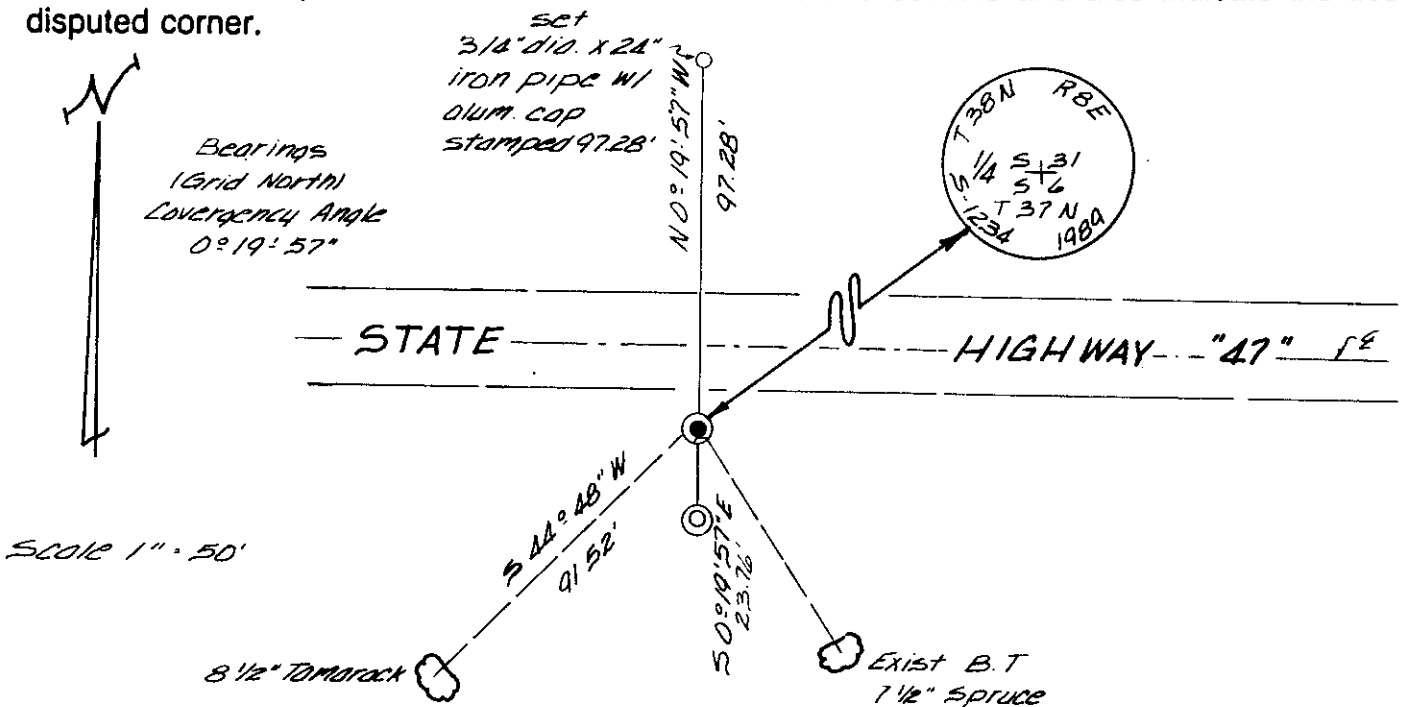
Feb. 1908 - D. H. Vaughan, County Surveyor, recovered corner and found over run of 5 links west to township corner.

Sept. 18th, 1936 - V. M. Maine, County Surveyor, Corner in centerline of State Highway "47", Set offset cedar stake 36 links south, Original B.T.'s and Vaughan's B.T.'s gone. Ira Smith verified original location and old random north and south of highway is plain.

Feb. 17th, 1954 - F. R. Wincentzen, County Surveyor, identifies corner being monumented by an iron pipe in Highway "47" and a witness Cor. brass cap monument 36 links south of corner.

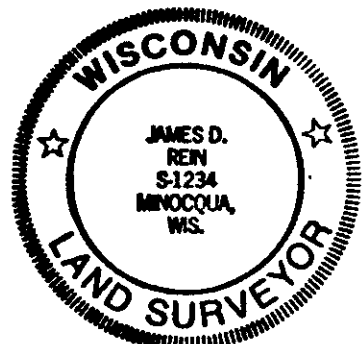
(Continued on back of this form)

(c) (d) (e) Plan view of corner with ties to at least 4 witness monuments. If in disagreement with previously established corner, show the distances between the two corners and also indicate the ties to the disputed corner.



(i) I, James D. Rein R.L.S. #1234
 (type or print name) certify that the corner location on this record was determined by me or under my direction and control and that this U.S. Public Land Survey Monument Record is correct and complete to the best of my knowledge and belief.

James D. Rein Signature April 8th, 1989 Date



Index No. Z 3

3808 310020

Stock No. 26273

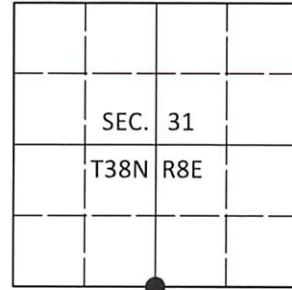
April 5th, 1989 - James D. Rein, R.L.S. #1234, Recovered brass capped 2" diameter iron pipe (Witness Monument) 45 feet south of the centerline of relocated State Highway "47". Set a capped 2" diameter X 30" long aluminum monument at a true bearing North, 23.76 feet (36 links) from witness monument. Made additional ties as shown in plan view. Set new plastic stake by Wincentzen's witness corner.

U.S. PUBLIC LAND SURVEY MONUMENT RECORD

Note: This form is intended and designed to fulfill all requirements of Wisconsin Administrative Code, Chapter A-E 7.08 U.S. Public Land Survey Monument Record (3)(a-i).

(a) CORNER LOCATION
 1/4 Cor. of Secs. 6 & 31
 Township 37 & 38 North
 Range 8 East of the 4th P.M.
 Town of Newbold
 County of Oneida

WISCORS - Oneida County
 N: 199,231.49 USft
 E: 231,318.52 USft
 Datum: NAD 83(2011)
 GNSS Method: RTN - Direct
 GNSS Control: WISCORS VRS



(b) HISTORY OF ORIGINAL CORNER ESTABLISHMENT

Original Surveyor: _____ Original Accessories: _____
 Date of Survey Commenced: _____ See previous monument record(s)
 Completed: _____

(b)(f)(g)(h) Description of monument found at this corner and if it was accepted, state all evidence (material, testimonial, occupational, plats, records, other monuments) used as a basis for accepting. If not accepted or if nothing was found, state evidence used as basis for establishing location. If re-established through lost corner proportionate methods, indicate all monuments, distances and directions used to establish. Indicate type of monument and sign post found or set.

This is a perpetuation of the following monument record(s) that comprise a complete history of the corner:

Apr. 8, 1989: USPLS Monument Record No. 3808310020 by James D. Rein, PLS

Sep. 8, 2020: I found and accepted the record monument, a 2.4" diam. aluminum pipe with a 3.3" diam. Oneida Co. aluminum cap buried 10" beneath the road shoulder. I can't make sense of the record bearing trees. I found or established accessories as shown below.

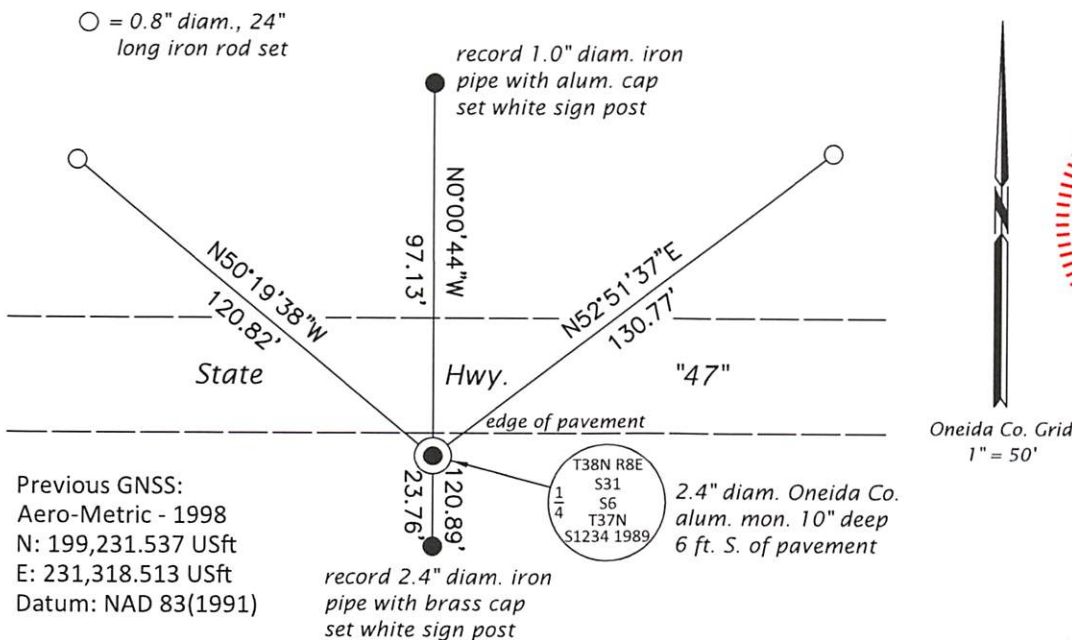
The coordinate value shown has been verified by at least one of the following methods: 1) comparison to a previously GPS determined published value; 2) the value is the average of two or more GPS observations at a markedly different time; 3) one or more distances were measured back to the GPS observed corner from temporary GPS observed offset locations.

REGISTER OF DEEDS OFFICE
 ONEIDA COUNTY
 FILED

JAN 13 2021

KYLE J. FRANSON
 REGISTER OF DEEDS

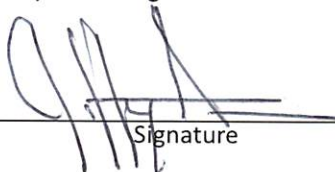
(c)(d)(e) Plan view of corner with ties to at least 4 witness monuments. In disagreement with previously established corner, show the distances between the two corners and also indicate the ties to the disputed.



Oneida Co. Grid
 1" = 50'

Previous GNSS:
 Aero-Metric - 1998
 N: 199,231.537 USft
 E: 231,318.513 USft
 Datum: NAD 83(1991)

(i) I, Jeffrey W. Austin, Professional Land Surveyor No. S-1885, hereby certify that the corner location on this record was determined by me or under my direction and control and that this U.S. Public Land Survey Monument Record is correct and complete to the best of my knowledge and belief.

 Signature
 15 DEC 2020 Date