

# U.S. PUBLIC LAND SURVEY MONUMENT RECORD

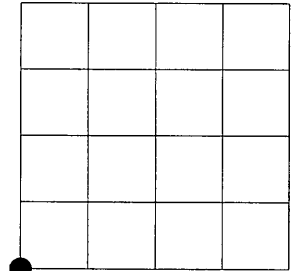
NOTE: This form is intended and designed to fulfill all requirements of Wisconsin Administrative Code, Chapter A-E 7.08 U.S. Public Land Survey Monument Record (3)(a)(b)(c)(d)(e)(f)(g)(h)(i). An additional sheet may be added if necessary to conform with said requirements.

(a) Corner location: Township 38 North

Range 8 East

Town of Newbold

Oneida County, Wisconsin



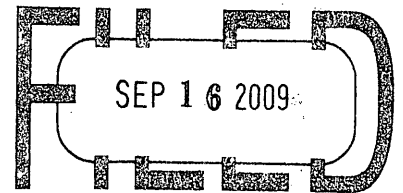
Section 34

(b)(f)(g)(h) Description of monument found at this corner and if it was accepted, state all evidence (material, testimonial, occupational, plats, records, other monuments) used as a basis for accepting. If not accepted or if nothing was found, state evidence used as basis for establishing location. If reestablished through lost corner proportionate methods, indicate all monuments, distances and directions used to establish. Indicate type of monument found or set and sign post.

AUGUST 1860 - ALFRED MILLARD SET POST COMMON TO SECTIONS 3 & 4, TOWN 37 NORTH, RANGE 8 EAST, AND SECTIONS 33 & 34, TOWN 38 NORTH, RANGE 8 EAST SET FOLLOWING BEARING TREES.  
 Y. PINE 14", N15°E, 24 LINKS  
 W. PINE 13", S78°E 84 LINKS

SEE FOLLOWING PAGE FOR ADDITIONAL HISTORY

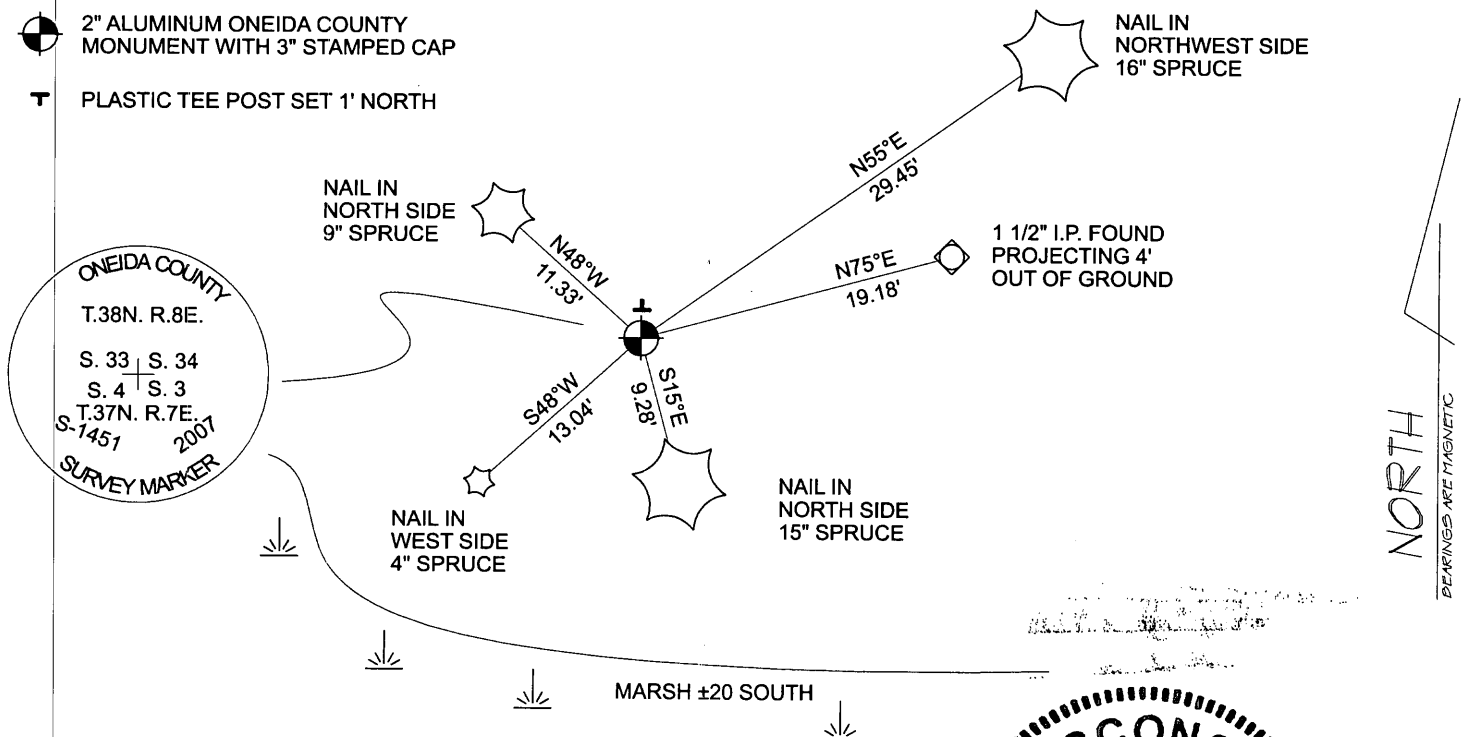
REGISTER OF DEEDS OFFICE  
 ONEIDA COUNTY, WIS.



At \_\_\_\_\_ O'Clock \_\_\_\_\_ M  
**THOMAS H. LEIGHTON**  
 REGISTER OF DEEDS

(c)(d)(e) Plan view of corner with ties to at least 4 witness monuments. If in disagreement with previously established corner, show the distances between the two corners and also indicate the ties to the disputed corner.

- 2" ALUMINUM ONEIDA COUNTY MONUMENT WITH 3" STAMPED CAP
- PLASTIC TEE POST SET 1' NORTH



(i) I, Eugene Uttech, Registered Land Surveyor #S-1451, hereby certify that the corner location on this record was determined by me or under my direction and control and that this U.S. Public Land Survey Monument Record is correct and complete to the best of my knowledge and belief.

*Eugene Uttech*  
 Signature

7/28/09  
 Date



Index No. 213

3808 33 00 00

SW. Corner Section 34, T.38 N., R. 8 E.

ADDITIONAL HISTORY:

January 20, 1906 – D.H. Vaughan, page 176, referenced to “SW. corner, set post and new bearings”

April 7, 1921 – D.H. Vaughan, Old field book, Vol. 9, Page 22 & 23. Measured East line of Section 33 and made reference to found “SE. corner of Section 33, which I set 15 years ago from original bearing trees”. Vaughan also referenced to setting the East ¼ of Section 33 at equal distance between Northeast and Southeast corners of Section 33.

March 14, 1947 – Genisot Engineer, by F.R. Wincentzen, County Surveyor files B-5486 referenced to “Established corner Sec. 33, 34, 3 & 4”. Wincentzen also referenced that he “found Vaughan’s original BT’s and ¼ post at the North ¼ of Section 3”. It is noted that Wincentzen measured 80 chains along the South line and West line of Section 34.

March 13, 1963 – Genisot Engineering, by F.R. Wincentzen, County Surveyor files C-1625, called for iron pipe at the SW. corner of Sec. 34. Wincentzen measured West 1 mile and Southwesterly, to MC. on North side of Douglas Lake. Measurements indicated S. 1/4 of Section 33, midway between Southwest corner and Southeast corners of Section 33.

July 22, 1983 - Genisot Engineers, by Mike Romportl, County Survey files B-5415, measured South line of Section 33. Referenced to iron pipe at S. 1/4 corner of Sec. 33 and also iron pipe at 1313.22 feet East of the South ¼.

November 12, 2007 – MSA Professional Services by Eugene Uttech, office field book 121, page 60. At site found 2 iron pipes, 19.18 feet apart. We took measurements’ North and South to existing evidence and referenced to Oneida County Coordinates. Measurements along with computed measurements supported 1” iron pipe found to agree within the probable accuracy of that by Wincentzen. Distance to MC on the North side of Douglas Lake (Wincentzen 1418.56 feet, measured 1422.34 feet). Also the distance to South ¼ and Southwest corner of Section 33, establishes S. 1/4 within 0.9 feet of equal distance and near straight line, as reference by Wincentzen. Also, distance to Southeast corner of Section 34 measured within 3.46 feet of 80 chains, as referenced by Wincentzen. This location also helps support iron pipe found at the West ¼ corner of section 34 being near equal distance and near straight line between Southwest and Northwest corner of Section 34. (See Monument record sheet for West ¼ Section 34). I replaced iron pipe with aluminum monument and referenced as shown.

213

3808 3300 00

