

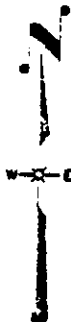
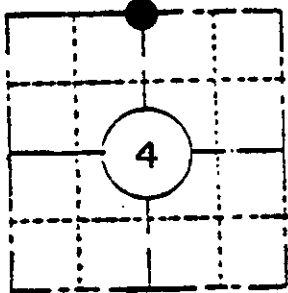
U. S. PUBLIC LAND SURVEY MONUMENT RECORD

INSTRUCTIONS:

This record shall show the location of the corner and shall include all of the following nine elements (a through i).

(a) Identify the corner by reference to the U.S. public land survey system.

**N 1/4 COR., SECTION 4
TOWNSHIP 37 NORTH,
RANGE 8 EAST,
ONEIDA COUNTY, WIS.**



LOCATION SKETCH

(Location of landmark indicated by "●")

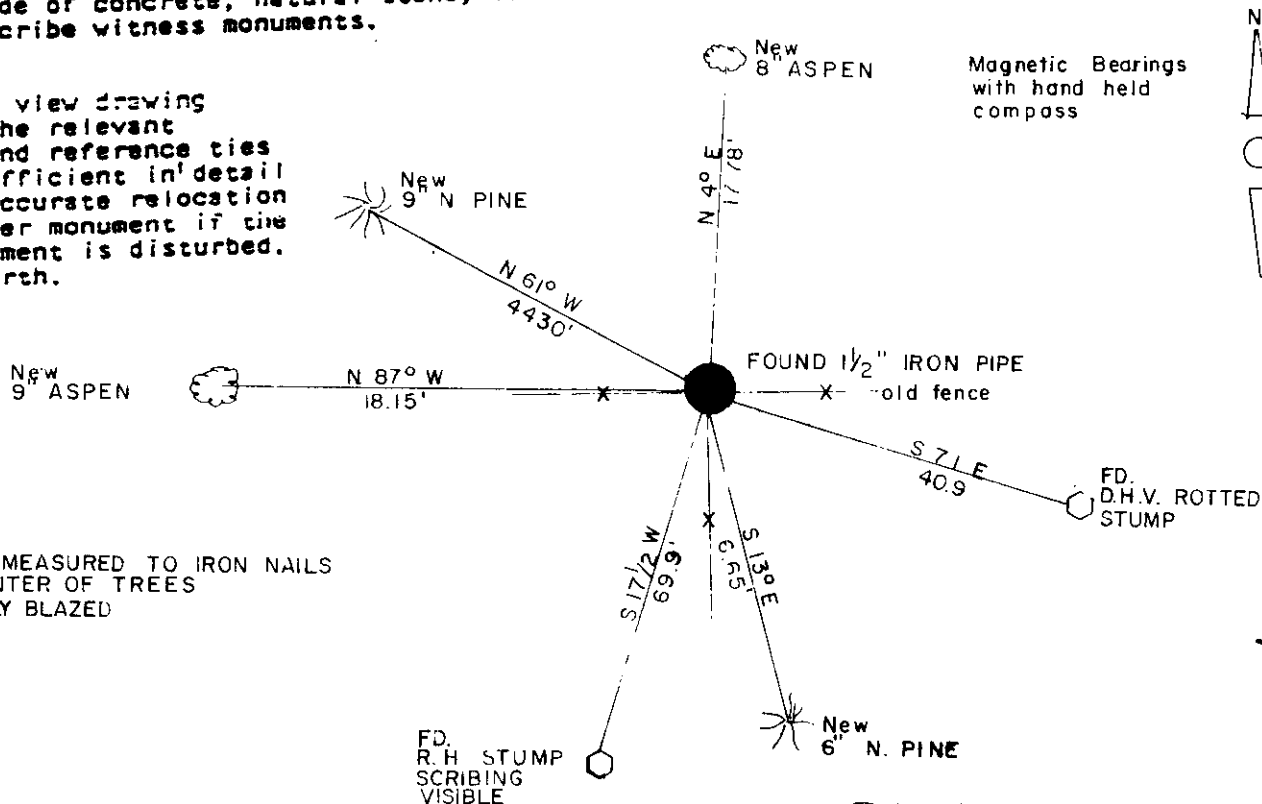
- 1860 D.P.S. Birch 6" x 12", hemlock 7" x 4" x 11"
- 1905 & 1906 D.M. vaughan sent to NE cor. S. 5 found stump of old D.P. on also 3" and post 1' below surface then ran south & set 4 proportionally. also from this corner ran east to NE cor. .79.71 fell 1.29' of cor. went west and set 1 1/2" at 39.85' and 64' S of random D.P.S. S.W. 1/4 1.56.. 72' 2703/42 62
- 1950 Ray Hall has a iron pipe at fence corner new D.P. wire Stump 40" S 172.. 69.9', found D.H.V. D.P.S. in place. subdivided the NW 1/4
- 1963 J.C. Kirby found iron pipe at corner

(b) Describe any record evidence, monument evidence, occupational evidence, testimonial evidence or any other material evidence you considered, and whether the monument was found or placed.

At this corner I found an iron pipe in old fence corner. I also found nails D.P.S. & D.M.V. S.W. 1/4 S.W. 1/4. The pipe was in good condition and made new witnesses as shown. In resurveying the NW 1/4 we found nails measurements were consistent with our measurements from this corner.

(c) In the plan view drawing below, provide reference ties to at least 4 witness monuments, or, if the location is within a municipality, to at least 2 witness monuments. (Witness monuments shall be made of concrete, natural stone, iron or other equally durable material, except wood.) Describe witness monuments.

(d) Show a plan view drawing depicting the relevant monuments and reference ties which is sufficient in detail to enable accurate relocation of the corner monument if the corner monument is disturbed. Indicate north.



- DISTANCES ARE MEASURED TO IRON NAILS IN APPROX. CENTER OF TREES
- TREES ARE ONLY BLAZED

(e) Describe any material discrepancy between the location of the corner as restored or reestablished and the location of that corner as previously restored or reestablished by distance and direction. Show the discrepancy on the plan view drawing under (d), above. Show the distances between the corner as previously restored or reestablished and (1) the corner as restored or reestablished, and (2) to at least 2 of the witness monuments shown on the drawing in (d), above.

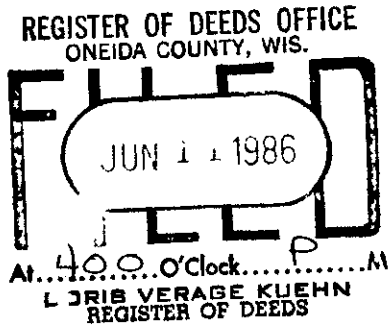
Found none

(f) Was the corner restored through acceptance of (1) an obliterated evidence location, or, (2) a found perpetuated location?

a. found perpetuated location

(g&h) Was the corner reestablished through lost corner proportionate methods? If so, show the method, including the directions and distances to other public land survey corners used as evidence or used for proportioning in determining the corner location?

n/a



(i) I, Michael J. Romportl S-1624
(type or print name) certify that the corner location shown on this record was determined by me or under my direction and control and that this U.S. Public Land Survey Monument Record is correct and complete to the best of my knowledge and belief.

Michael J. Romportl 8-3-83
Signature Date
Michael J. Romportl
Rhinelander Associates Inc.
Rhinelander, Wis.

