

U.S. PUBLIC LAND SURVEY MONUMENT RECORD

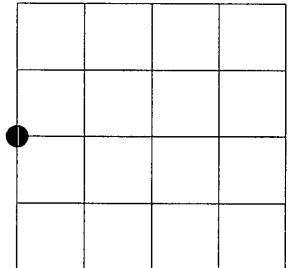
NOTE: This form is intended and designed to fulfill all requirements of Wisconsin Administrative Code, Chapter A-E 7.08 U.S. Public Land Survey Monument Record (3)(a)(b)(c)(d)(e)(f)(g)(h)(i). An additional sheet may be added if necessary to conform with said requirements.

(a) Corner location: Township 38 North

Range 8 East

Town of Newbold

Oneida County, Wisconsin



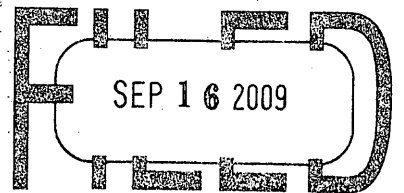
Section 34

(b)(f)(g)(h) Description of monument found at this corner and if it was accepted, state all evidence (material, testimonial, occupational, plats, records, other monuments) used as a basis for accepting. If not accepted or if nothing was found, state evidence used as basis for establishing location. If reestablished through lost corner proportionate methods, indicate all monuments, distances and directions used to establish. Indicate type of monument found or set and sign post.

JULY 1863 - ALEXANDER ANDERSON SET POST COMMON TO SECTIONS 33 & 34, TOWN 38 NORTH, RANGE 8 EAST AND SET FOLLOWING BEARING TREES.
 MAPLE 6", S24°E, 18 LINKS
 W. PINE 12", N25°W, 12 LINKS

SEE BACK FOR ADDITIONAL HISTORY

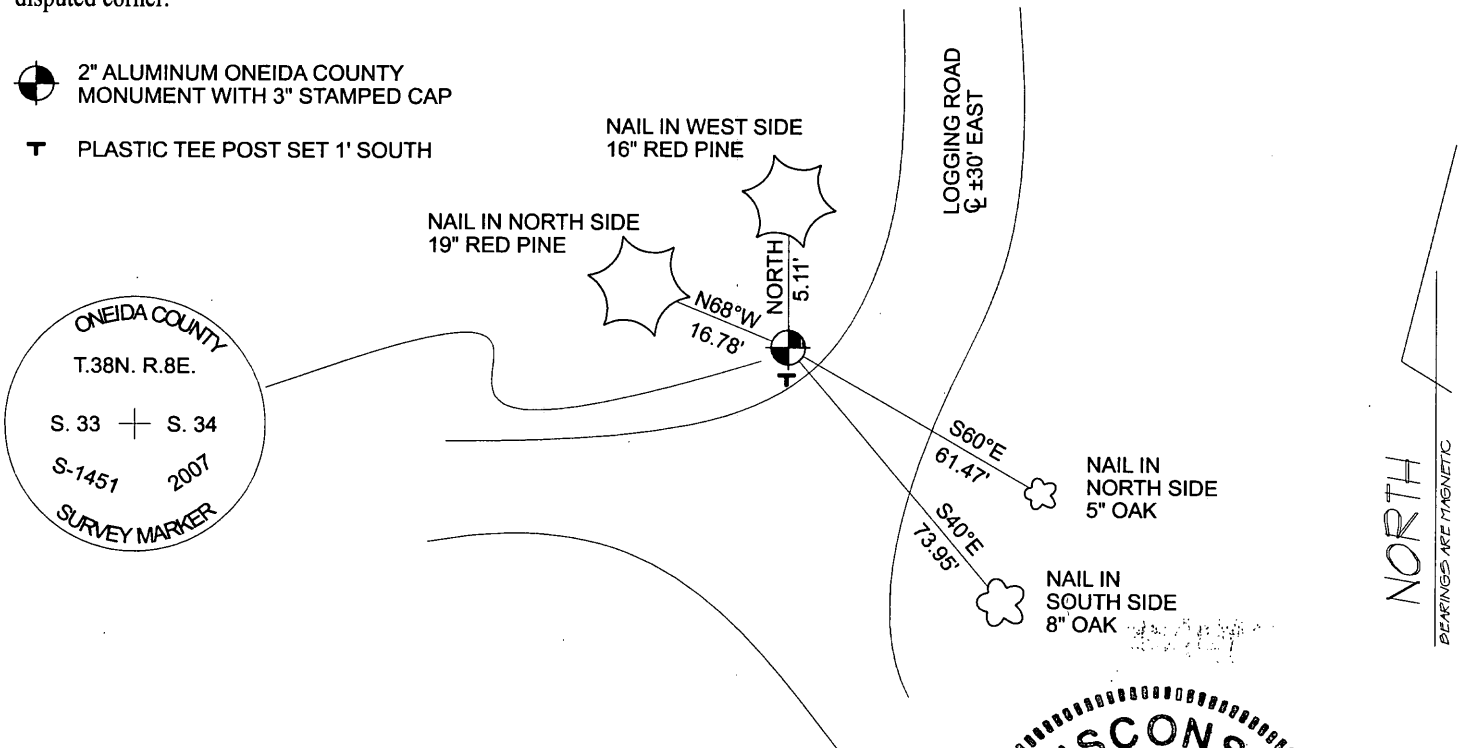
REGISTER OF DEEDS OFFICE
 ONEIDA COUNTY, WIS.



At _____ O'Clock _____ M
THOMAS H. LEIGHTON
 REGISTER OF DEEDS

(c)(d)(e) Plan view of corner with ties to at least 4 witness monuments. If in disagreement with previously established corner, show the distances between the two corners and also indicate the ties to the disputed corner.

- 2" ALUMINUM ONEIDA COUNTY MONUMENT WITH 3" STAMPED CAP
- PLASTIC TEE POST SET 1' SOUTH



(i) I, Eugene Uttech, Registered Land Surveyor #S-1451, hereby certify that the corner location on this record was determined by me or under my direction and control and that this U.S. Public Land Survey Monument Record is correct and complete to the best of my knowledge and belief.

Eugene C. Uttech
 Signature

7/28/09
 Date



Index No. K 13

3808332000

W. ¼ Corner Section 34, T.38 N., R.8 E.

April 7, 1921 – D.H. Vaughan, Old field book, Vol. 9, Page 22 & 23. Measured East line of Section 33 and made reference to found “SE. corner of Section 33, which I set 15 years ago from original bearing trees”. Vaughan also referenced to setting the East ¼ of Section 33 at equal distance between Northeast and Southeast corners of Section 33.

March 14, 1947 – Genisot Engineer, by F.R. Wincentzen, County Surveyor files B-5486 referenced to “Established corner Sec. 33, 34, 3 & 4”. Wincentzen also referenced that he “found Vaughan’s original BT’s and ¼ post at the North ¼ of Section 3”. It is noted that Wincentzen measured 80 chains along the South line and West line of Section 34.

November 12, 2007 – MSA Professional Services by Eugene Uttech, office field book 121, page 60. At site found 2” dia. iron pipe. We took measurements’ North and South to existing evidence and referenced to Oneida County Coordinates. Measurements supported the iron pipe found as being near equal distance and near straight line between Southwest and Northwest corner of Section 34 as reference by Vaughan. Measured distance of 2645.01 feet to the Southwest corner of Section 34 also within the probable accuracy of Wincentzen in 1947, which called for 40 chains. I replace 2” diameter pipe with aluminum monument and referenced as shown.

380833 20 00

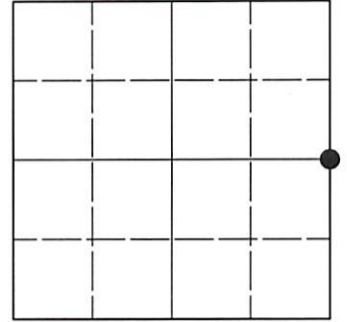
X
13

U.S. PUBLIC LAND SURVEY MONUMENT RECORD

Note: This form is intended and designed to fulfill all requirements of Wisconsin Administrative Code, Chapter A-E 7.08 U.S. Public Land Survey Monument Record (3)(a-i).

(a) CORNER LOCATION
 1/4 Cor. of Secs. 33 & 34
 Township 38 North
 Range 8 East of the 4th P.M.
 Town of Newbold
 County of Oneida

WISCRS - Oneida County
 N: 201,767.07 USft
 E: 244,521.38 USft
 Datum: NAD 83(2011) ep. 2010.00
 GNSS Method: RTN - Direct
 GNSS Control: WISCORS VRS



Sec. 33, T. 38 N., R. 8 E.

(b)(f)(g)(h) Description of monument found at this corner and if it was accepted, state all evidence (material, testimonial, occupational, plats, records, other monuments) used as a basis for accepting. If not accepted or if nothing was found, state evidence used as basis for establishing location. If re-established through lost corner proportionate methods, indicate all monuments, distances and directions used to establish. Indicate type of monument and sign post found or set.

This record is a perpetuation of the following land corner document(s):

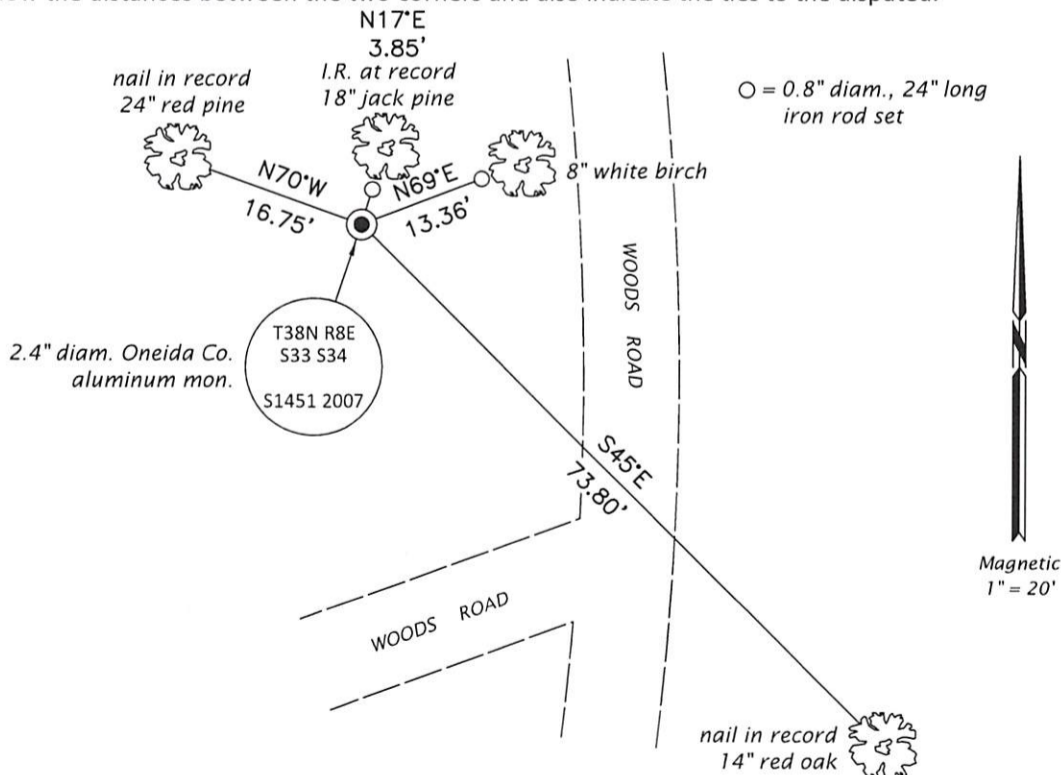
July 28, 2009: USPLS Monument Record by Eugene C. Uttech, filed in Oneida County

A complete history of the corner can be found on the previous land corner document(s). I accept the record activity as a true and faithful perpetuation or reestablishment of the original corner location and further perpetuate it as described below.

June 7, 2022: I found and accepted the record monument, a 2.4" diam. aluminum pipe, firmly set, with a 3.3" diam. Oneida Co. aluminum cap projecting 3" above the ground surface. The record bearing tree at S60°E is gone. I found or established accessories as indicated below. I found a white vinyl sign post bearing South, 1.0 ft.

The coordinate value shown is the weighted mean of two or more GNSS observations at markedly different times satisfying the accuracy requirements defined and qualified in the 2022 Oneida County Fee Schedule for USPLS Corners.

(c)(d)(e) Plan view of corner with ties to at least 4 witness monuments. If in disagreement with previously established corner, show the distances between the two corners and also indicate the ties to the disputed.




REGISTER OF DEEDS OFFICE
 ONEIDA COUNTY
 FILED

AUG 02 2022

KYLE J. FRANSON
 REGISTER OF DEEDS

(i) I, Jeffrey W. Austin, Professional Land Surveyor No. S-1885, hereby certify that the corner location on this record was determined by me or under my direction and control and that this U.S. Public Land Survey Monument Record is correct and complete to the best of my knowledge and belief.


Date
JULY 2, 2022