

CERTIFIED LAND CORNER RESTORATION

Index No. A-21

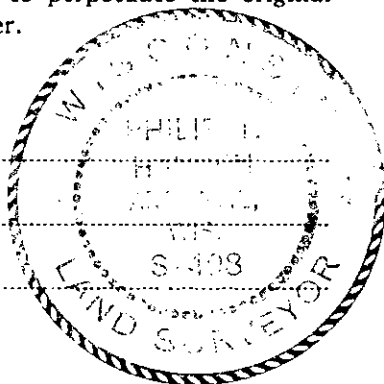
State of Wisconsin }
County of Oneida } ss.

I Philip T. Hansen, do hereby certify that on the 19th day of April, 1977, I found evidence of the Section corner of Sec. 1, 2, 35, 36 Township 37 - 38, North, Range 8 East, Fourth Principal Meridian, as described hereon; and that from this evidence I established a new monument and accessories as described hereon to perpetuate the original location of this corner.

Resident witnesses:

Jim Claflin

Herb Wagoner



History of original corner establishment:

Original Corner established by Hiram C. Fellows, Deputy Surveyor, in 1859, from which Cedar 10" bears N70°W, 24 links, Yellow Birch 8" bears N62°E, 68 links; Cedar 12" bears S47°E, 13 links and Cedar 10" bears 64°W, 28 links.

Corner recovered by N. Loftus, Ripco Surveyor, in 1960. They tied into this corner from the south and east when re-monumenting Section 1.

No record of bearing trees established.

Description of corner evidence found:

Recovered 1-3/4" iron pipe with 3" square brass cap in good condition, firmly in ground and projecting 20" above ground. Cap stamped:

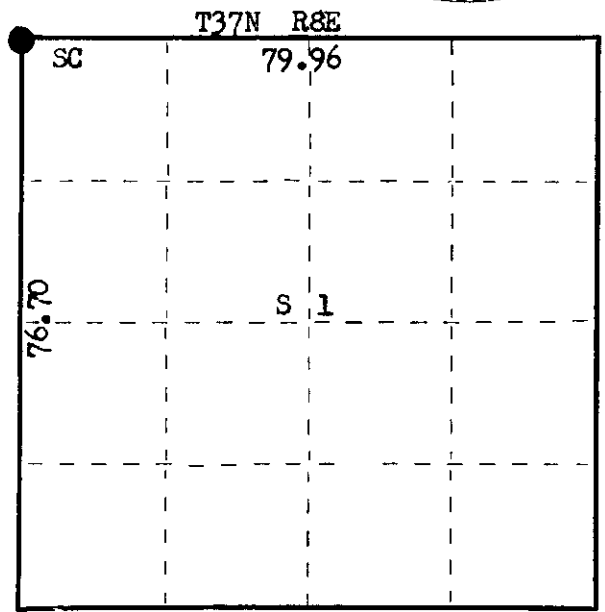
Recovered White Pine 18" N65°W, 40.8 links, scribed S35
Black Spruce 10" S85°E, 31.3 links, scribed BT 37-8.

T38N R8E
S35 | S36
S2 | S1
T37N R8E
RIPCO

Description of monument and accessories I established to perpetuate the original location of this corner.

Marked NBT - Black Spruce 18" N22°E, 70.4 links, scribed SC BT.

FORM 985
Wisconsin Planning & Mapping Co.
Madison, Wisconsin



○ = Corner monument restored.

Dated at Rhineland, Wis., this 5th day of May, 1977.

Signature Philip T. Hansen Title Registered Land Surveyor Registration No. S-498
(County Surveyor, Registered Land Surveyor, or other duly authorized official)

Office of Register of Deeds, County of Oneida, I hereby certify that the within instrument was filed in this office for record on the 6th day of May, 1977 at 1:00 o'clock P. M.

Louis Verage Kuehn
(Register of Deeds)

By.....Deputy

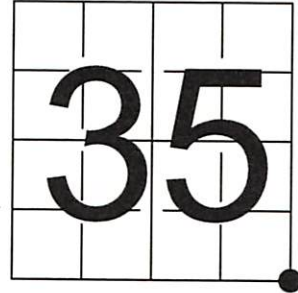
380835000

U S PUBLIC LAND SURVEY MONUMENT RECORD

NOTE: This form is intended and designed to fulfill all requirements of Wisconsin Administrative Code, Chapter A-E 7.08 U.S. Public Land Survey Monument Record (3) (a-i)

A-E 7.08(3)(a) Identity of corner
 SOUTHEAST CORNER OF SECTION 35
 TOWNSHIP 38 NORTH
 RANGE 08 EAST OF THE 4TH PM
 TOWN OF PINE LAKE,
 COUNTY OF ONEIDA

WISCRS - ONEIDA COUNTY
 N: 199,158.175 USft (199,157.881)
 E: 255,048.098 USft (255,048.577)
 Datum: NAD83 (2011)
 GNSS Method RTN - Direct
 GNSS Control WISCORS VRS



The coordinate value shown has been verified by the average of two or more GPS observations at a markedly different time.

A-E 7.08(3)(b) Description of any record evidence, monument evidence, occupational evidence, testimonial evidence, or any other material evidence.

Original Surveyor: Alfred Millard
 (Note: Previous Certified Land Corner Restoration refers to Hiram C. Fellows as Original Surveyor)

REGISTER OF DEEDS OFFICE
 ONEIDA COUNTY
 FILED

Date of Original Survey Commenced: August 1860
 Completed: September 1860

APR 21 2022

Original Accessories: See Previous Monument Record:
 Cedar 10 N 70° W 24 Links Index No. A-21
 Y. Birch 8 N 6 1/2° E 68 Links
 Cedar 12 S 47° E 13 Links
 Cedar 10 S 64° W 28 Links

KYLE J. FRANSON
 REGISTER OF DEEDS

January 01, 1960 - Surveyor Ivan Branham - Shows corner location on Oneida County Map B2840.
 April 19, 1977 - Surveyor 498 - Philip T. Hansen - recovered a 1 3/4" iron pipe with a 3" square cap, and "OBT's" as described on Certified Land Corner Restoration Index No. A - 21 (Previous note: "Corner recovered by N. Loftus in 1960")
 April 28, 1977 - Surveyor 00259 - Norman J. Loftus - indicates this position as "Set previous survey", and mentions 2 BT's "old": a 6" Black Spruce, N36°W, 12.5' and a 4" Black Spruce, S16°W, 27.7' on Oneida Co. Map C347.
 August 14, 1989 - Surveyor 1523 - Todd J. Loftus - indicates the same as Norman J. Loftus (Oneida Co. Map C347) on Oneida County Map C715.

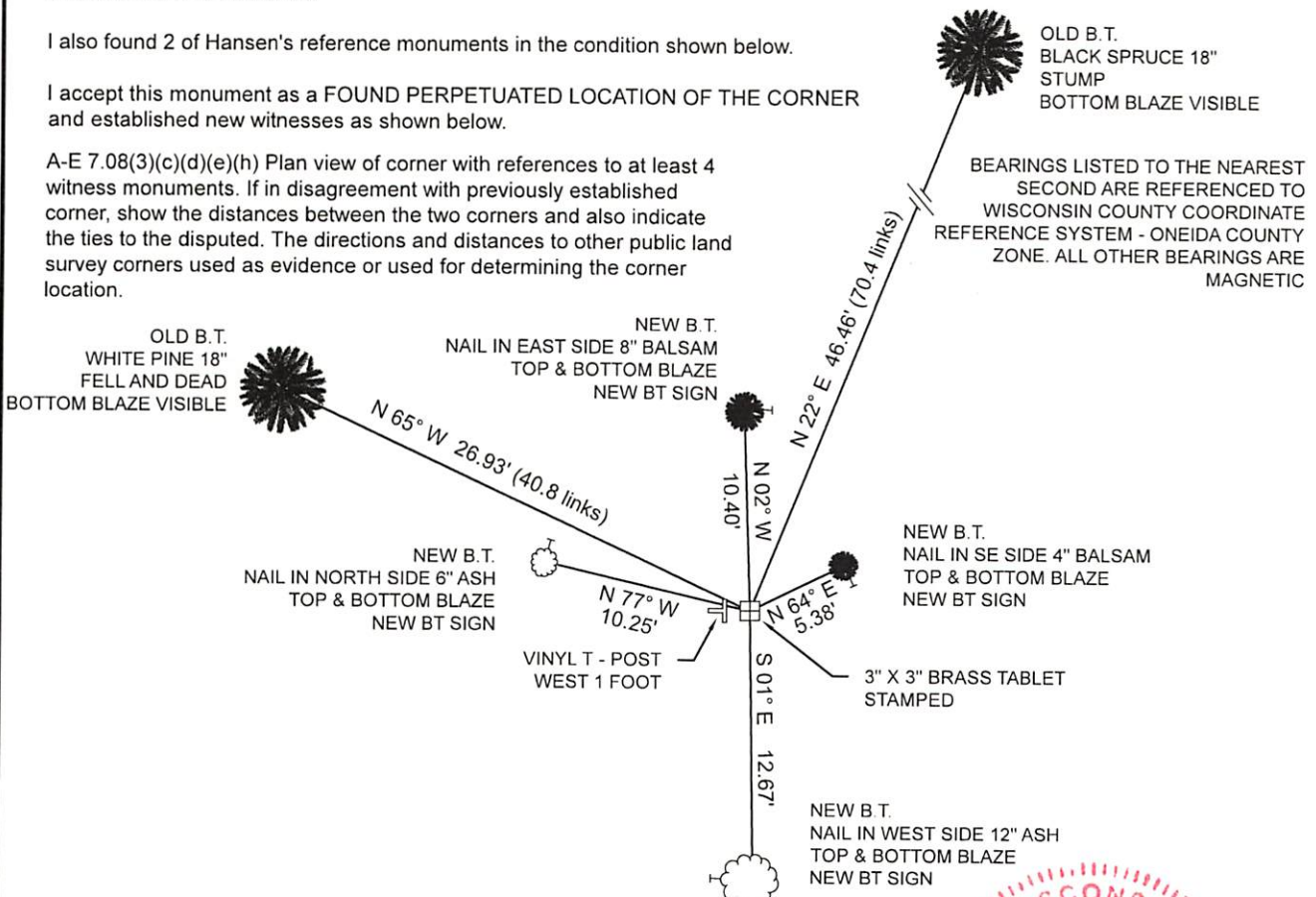
A-E 7.08(3)(f) Whether the corner was restored through acceptance of an obliterated location or a found perpetuated location.

March 3, 2022 - I found a 1 3/4" diameter iron pipe with a 3" X 3" brass tablet affixed to the top & stamped to identify the corner. Monument is undisturbed and straight, extending less than 1 foot above grade, in a low wet area, with dense tree cover. I found the difference in coordinate measurements to differ by 0.294 feet in the northing and 0.479 feet in the easting. I believe today's measurements to be correct.

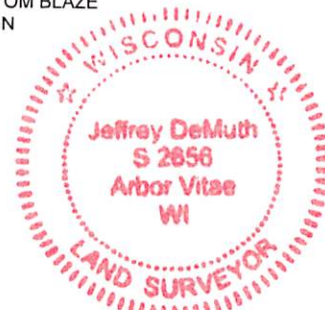
I also found 2 of Hansen's reference monuments in the condition shown below.

I accept this monument as a FOUND PERPETUATED LOCATION OF THE CORNER and established new witnesses as shown below.

A-E 7.08(3)(c)(d)(e)(h) Plan view of corner with references to at least 4 witness monuments. If in disagreement with previously established corner, show the distances between the two corners and also indicate the ties to the disputed. The directions and distances to other public land survey corners used as evidence or used for determining the corner location.



A-E 7.08(3)(i) I, Jeffrey L. DeMuth, Professional Land Surveyor No. S-2656, hereby certify that the corner location on this record was determined by me or under my direction and control and that this U.S. Public Land Survey Monument Record is correct and complete to the best of my knowledge, and belief



SIGNATURE

April 12, 2022
 DATE