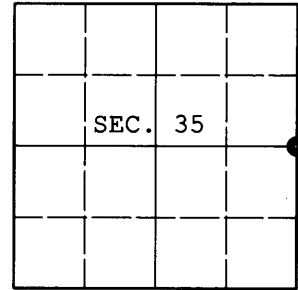


**U.S. PUBLIC LAND SURVEY MONUMENT RECORD**

Note: This form is intended and designed to fulfill all requirements of Wisconsin Administrative Code, Chapter A-E 7.08 U.S. Public Land Survey Monument Record (3) (a) (b) (c) (d) (e) (f) (g) (h) (i). An additional sheet may be added if necessary to conform with said requirements.

(a) CORNER LOCATION: Plane Coordinates  
 1/4 Cor. of Secs. 35 & 36 N: 201,786.822  
 Township 38 North E: 254,961.190  
 Range 8 East of the 4th P.M. Datum: NAD 1983(2007)  
 Town of Newbold County of Oneida



(b) HISTORY OF ORIGINAL CORNER ESTABLISHMENT

Original Surveyor: Alexander Anderson Original Accessories:  
 Date of Survey: Commenced: July 10, 1863 w. pine 7" S79°E, 6 lks.  
 Completed: July 21, 1863 y. pine 8" S66°W, 17 lks.

(b) (f) (g) (h) Description of monument found at this corner and if it was accepted, state all evidence (material, testimonial, occupational, plats, records, other monuments) used as a basis for accepting. If not accepted or if nothing was found, state evidence used as basis for establishing location. If re-established through lost corner proportionate methods, indicate all monuments, distances and directions used to establish. Indicate type of monument and sign post found or set.

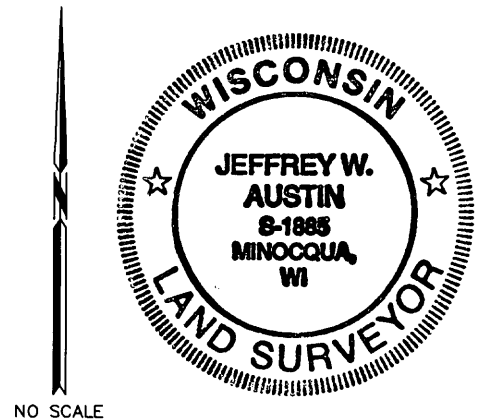
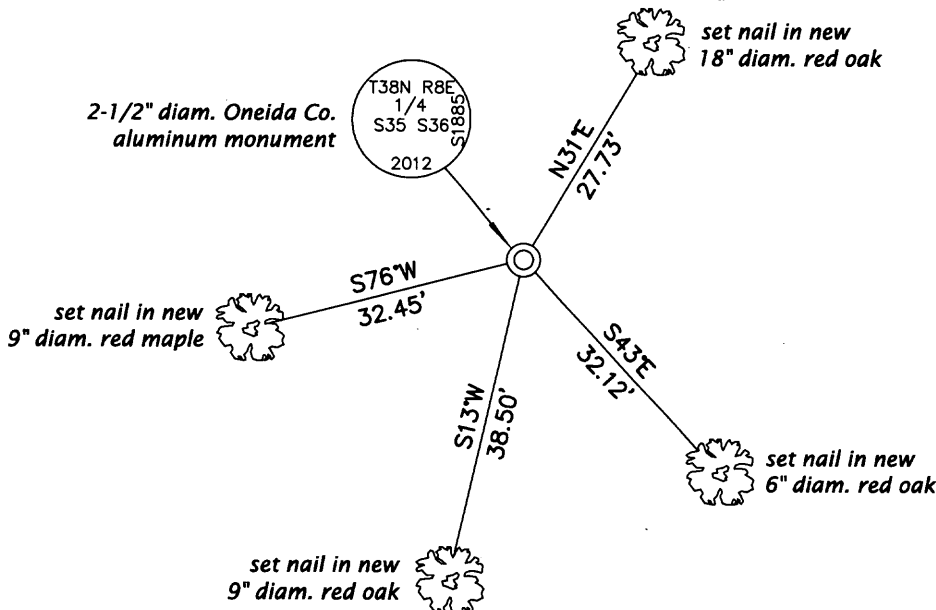
January 13, 1902: Dorr/Vaughan book on page 178. D.H. Vaughan sets corner with the following accessories: w. pine 9 S86°W, 23-1/2 lks. and y. pine stp. N45°E, 1 lk.

October 15, 1959: Branham book 3 on page 106. Ivan Branham recovers "old BT stumps - scribes OK." He sets a new post and cuts a new bearing tree: SM 6 N20°W, 7 lks.

May 23, 2012: I found the recently cut 12" diam. stump of Branham's sugar maple bearing tree. Upon cutting into the stump, I found scribing on the face of a blaze 3-4 inches from the center of the stump. From the face of the blaze, I measure S20°E, 4.6 ft. and set a temporary point. I was unable to recover the remains of Vaughan's accessories, but the area has been heavily worked in the recent past. To further substantiate the location, I recovered the remains of Branham's wood post at the purported North sixteenth-section corner and determined that in conjunction with the purported corner common to sections 25, 26, 35 and 36, all three points fall on the same line. At the temporary point, I set a 2-1/2" diam., 30" long aluminum pipe with a 3-1/4" diam. Oneida County aluminum cap projecting 6" above a collar of stone and marked as shown below. I established accessories as shown below and set a white plastic sign post bearing Southwest, 1-1/2 ft. dist.

The coordinates shown were derived from a static GPS control survey based on a VRS control point generated from the WISCORS network.

(c) (d) (e) Plan view of corner with ties to at least 4 witness monuments. If in disagreement with previously established corner, show the distances between the two corners and also indicate the ties to the disputed.

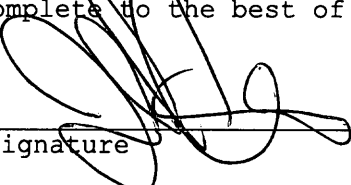


REGISTER OF DEEDS OFFICE  
 ONEIDA COUNTY  
**FILED**

MAY 29 2012

AT \_\_\_\_\_ O'CLOCK \_\_\_\_\_ M  
**THOMAS H. LEIGHTON**  
 REGISTER OF DEEDS

(i) I, Jeffrey W. Austin, Registered Land Surveyor No. S-1885, hereby certify that the corner location on this record was determined by me or under my direction and control and that this U.S. Public Land Survey Monument Record is correct and complete to the best of my knowledge and belief.

  
 Signature

MAY 24, 2012  
 Date