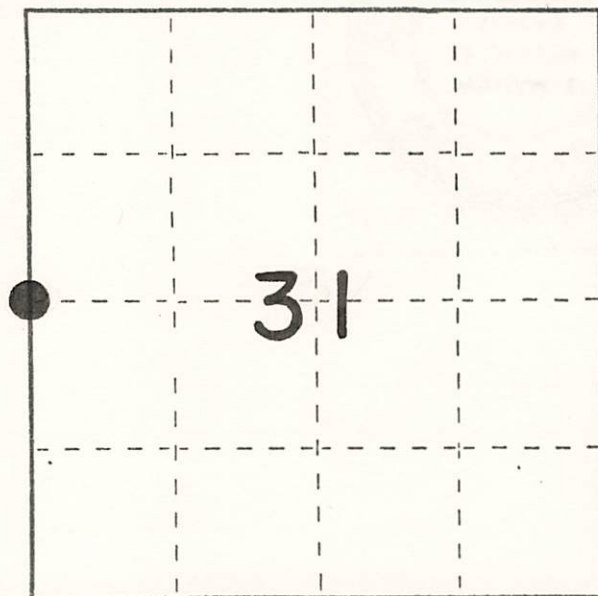


U. S. PUBLIC LAND SURVEY MONUMENT RECORD

INSTRUCTIONS : This record shall show the location of the corner and shall include all of the following nine elements (a through i).

- (a) Identify the corner by reference to the U.S. public land survey system.
 ○ = Corner monument restored.

WEST $\frac{1}{4}$ CORNER OF SECTION 31,
 T38N, R9E

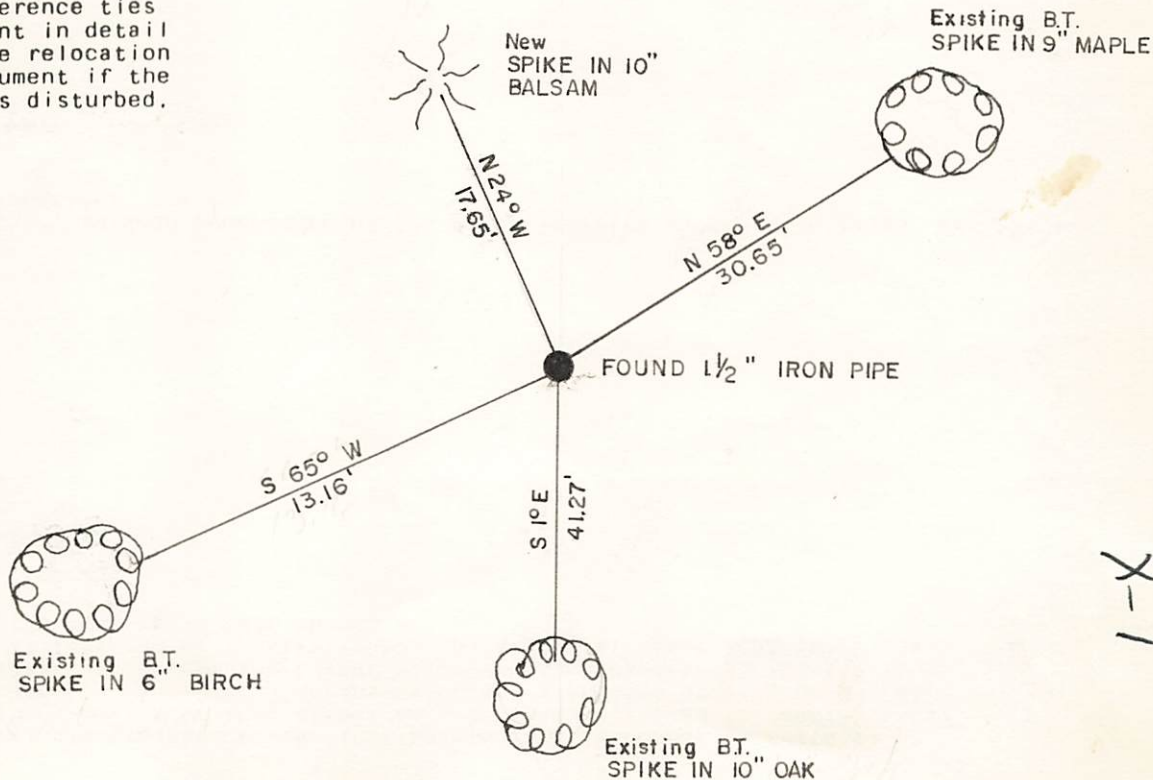


- (b) Describe any record evidence, monument evidence, occupational evidence, testimonial evidence or any other material evidence you considered, and whether the monument was found or placed.

Original corner by H. Fellows in 1859. North between 31 & 36 40.00 set $\frac{1}{4}$ post. BT's W. Pine 10" N24W 20 lks, W. Pine 10" S5E 22 lks. D.H. Vaughan at corner in 1902 and 1915. He found stumps of original trees. I found a $1\frac{1}{2}$ " iron pipe and 3 BT's.

- (c) In the plan view drawing below, provide reference ties to at least 4 witness monuments, or, if the location is within a municipality, to at least 2 witness monuments. (Witness monuments shall be made of concrete, natural stone, iron or other equally durable material.) Describe witness monuments.

- (d) Show a plan view drawing depicting the relevant monuments and reference ties which is sufficient in detail to enable accurate relocation of the corner monument if the corner monument is disturbed. Indicate north.



1-X

(e) Describe any material discrepancy between the location of the corner as restored or reestablished and the location of that corner as previously restored or reestablished by distance and direction. Show the discrepancy on the plan view drawing under (d), above. Show the distances between the corner as previously restored or reestablished and (1) the corner as restored or reestablished, and (2) to at least 2 of the witness monuments shown on the drawing in (d), above.

NONE

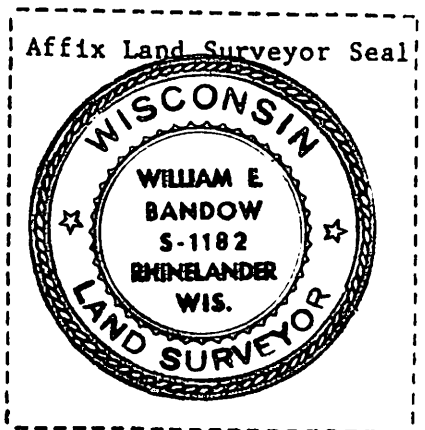
(f) Was the corner restored through acceptance of (1) an obliterated evidence location, or, (2) a found perpetuated location?

Found perpetuated location

(g&h) Was the corner reestablished through lost corner proportionate methods? If so, show the method, including the directions and distances to other public land survey corners used as evidence or used for proportioning in determining the corner location?

No

REGISTER OF DEEDS OFFICE
ONEIDA COUNTY, WIS.
FILED
JUN 12 1986
At 8:00 O'clock P.M.
DORIS VERAGE KUEHN
REGISTER OF DEEDS



(1) I, William E. Bandow
(type or print name) certify that the corner location shown on this record was determined by me or under my direction and control and that this U.S. Public Land Survey Monument Record is correct and complete to the best of my knowledge and belief.

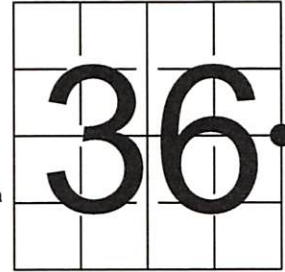
William E. Bandow 2-2-84
Signature Date

U S PUBLIC LAND SURVEY MONUMENT RECORD

NOTE: This form is intended and designed to fulfill all requirements of Wisconsin Administrative Code, Chapter A-E 7.08 U.S. Public Land Survey Monument Record (3) (a-i)

A-E 7.08(3)(a) Identity of corner
 EAST 1/4 CORNER OF SECTION 36
 TOWNSHIP 38 NORTH
 RANGE 08 EAST OF THE 4TH PM
 TOWN OF NEWBOLD
 COUNTY OF ONEIDA

WISCRS - ONEIDA COUNTY
 N: 201,703.954 USft
 E: 260,438.070 USft
 Datum: NAD83 (2011)
 GNSS Method RTN - Direct
 GNSS Control WISCORS VRS



The coordinate value shown has been verified by the average of two or more GPS observations at a markedly different time.

A-E 7.08(3)(b) Description of any record evidence, monument evidence, occupational evidence, testimonial evidence, or any other material evidence.

Original Surveyor: Hiram C. Fellows

REGISTER OF DEEDS OFFICE
 ONEIDA COUNTY
 FILED

Date of Original Survey Commenced: 1859
 Completed: 1859

APR 21 2022

Original Accessories:
 White Pine 10 N. 24° W. 20
 White Pine 10 S. 5° E. 22

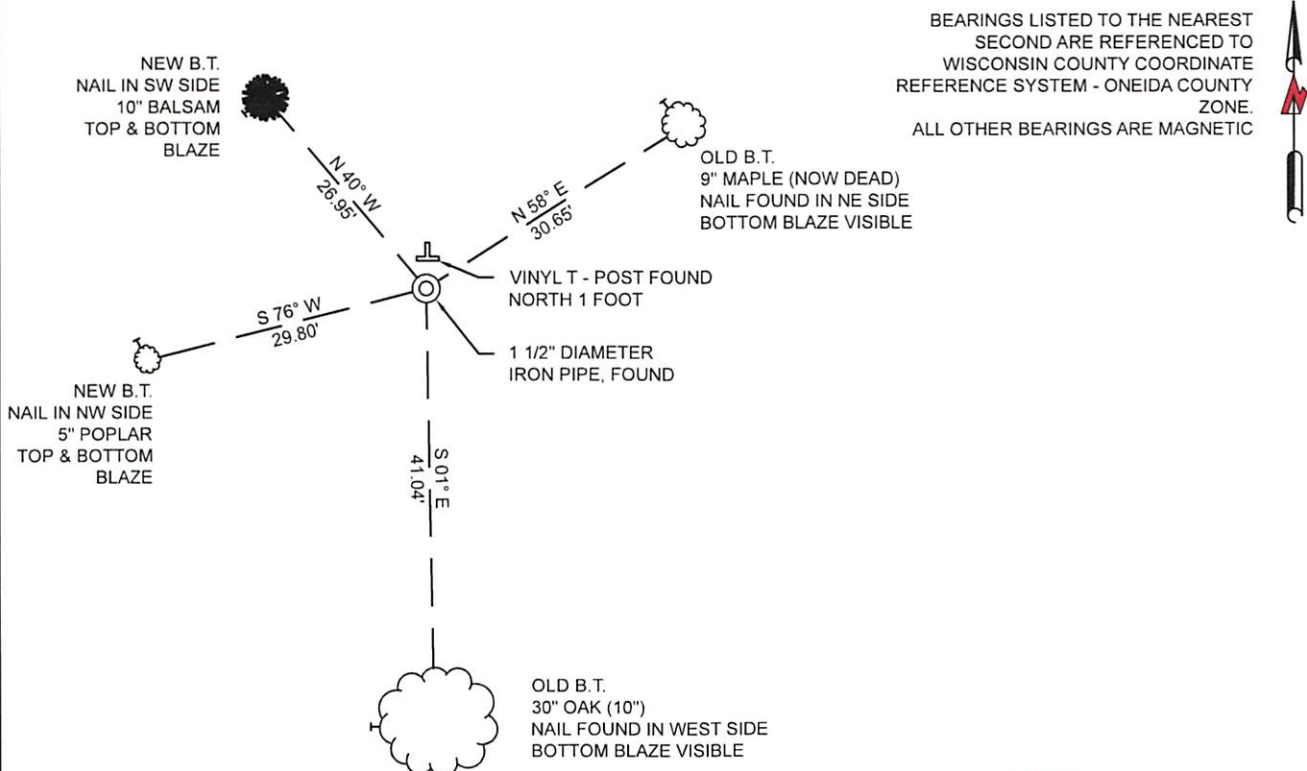
See Previous Monument Record:
 Index No. X-1

KYLE J. FRANSON
 REGISTER OF DEEDS

January 07, 1902 - Surveyor D.H. Vaughn - In Surveying Section 31, T. 38 N. R. 09 E. Notes: "W1/4P. org trees"
 July 06, 1915 - Surveyor D.H. Vaughn - In Surveying Section 31, T. 38 N. R. 09 E. Notes: "East from W1/4P..."
 January 01, 1960 - Surveyor Ivan Branham - Shows corner location on Oneida County map B2840
 May 17, 1979 - Surveyor 1418 - William H. Stuth - Notes "I.P. S. Rock Pile - SW Pine BT (Rotted) Found by Norman Loftus Appr. 1974"
 From Owens Illinois notes, Oneida County map L238
 December 14, 1980 - Surveyor 00259 - Norman J. Loftus indicates a "Iron Pipe Found" at this location - Certified Survey Map, Volume 3 of S Maps, Page 843 + 843-A.
 December 31, 1998 - Surveyor 1523 - Todd J. Loftus - Indicates a 1.5" Iron Pipe at this location on Oneida County map B4126.
 February 02, 1984 - Surveyor 1182 - William E. Bandow - Found a 1 1/2" Iron Pipe and 3 B.T.'s and prepared U.S. Public Land Survey Monument Record X-1.
 December 07, 2000 - Surveyor 1523 - Todd J. Loftus - Indicates a 1.5" Iron Pipe at this location on Oneida County map B4731.

A-E 7.08(3)(f) Whether the corner was restored through acceptance of an obliterated location or a found perpetuated location.
 January 3, 2022 - I found a 1 1/2" diameter iron pipe, extending ±2.5 feet above grade, and 2 of Bandow's bearing trees.
 I accept this monument as a FOUND PERPETUATED LOCATION OF THE CORNER and established new witnesses as shown below.

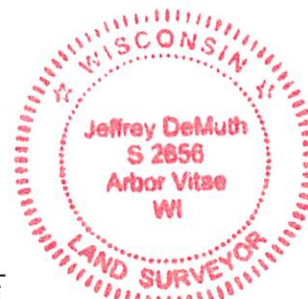
A-E 7.08(3)(c)(d)(e)(h) Plan view of corner with references to at least 4 witness monuments. If in disagreement with previously established corner, show the distances between the two corners and also indicate the ties to the disputed. The directions and distances to other public land survey corners used as evidence or used for determining the corner location.



A-E 7.08(3)(i) I, Jeffrey L. DeMuth, Professional Land Surveyor No. S-2656, hereby certify that the corner location on this record was determined by me or under my direction and control and that this U.S. Public Land Survey Monument Record is correct and complete to the best of my knowledge, and belief

Jeffrey L. DeMuth
 SIGNATURE

February 14, 2022
 DATE



43808362000