

U.S. PUBLIC LAND SURVEY MONUMENT LOCATION RECORD

Recorders Data

CORNER: West 1/4 Corner SECTION: 1 TOWNSHIP 38 NORTH RANGE 9 EAST WEST

FOR M.C. CORNER INDICATE: NAME OF WATERWAY N/A SECTION LINE N/A

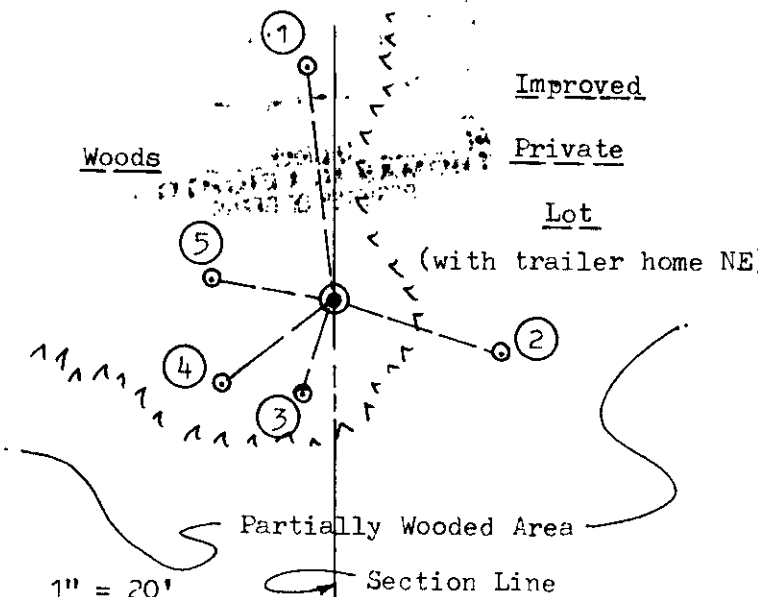
~~(CITY)~~(VILLAGE)(TOWN) OF: Sugar Camp COUNTY OF: Oneida

Description of monument found or placed and all other evidence used as a basis for monument location; including all monuments and related measurements required if the corner location is reestablished by lost corner proportionate methods. Also indicate name of original surveyor, survey date, corner monument set and established bearing trees, witness or reference monuments with ties from available records.

Found and accepted a standard 2" dia. aluminum pipe monument with Oneida County aluminum cap 8" above existing grade and stamped by RLS 7410(J.Will) in 1992. Four(4) large rocks were also found around base of monument as a rock cairn. I could only find two(2) older BTs with rusted 60 penny nails as noted in new ties below. I also found a standard white poly 'T' corner marker post about 2' SW of the monument which I reset as noted below. The corner location is easily accessed by vehicle from private roadway East of STH 17 at Fire No. sign 7218. All original GLO survey evidence established by William Daugherty in 1863 is now obliterated. In 1987, T. Loftus noted an iron pipe at this corner location on his Plat of Survey, No. B-1539, Oneida County Surveyor Records. In 1914, Vaughn noted a wood post at this corner and new BTs, a 15" Ms N53°E 37 lks and a 17" Ms S80½°W 43½ lks, which are all now obliterated. Corner is also located approximately 197' East of the centerline of STH 17 pavement by rough taping, from its junction with CTH 'D' West. This recovery was completed on April 23, 1998 and witnessed by an elderly female resident in a trailer home on improved wooded lot Easterly of corner location.

Plan view map of monument location with bearing and distance ties to a minimum of four(4) described witness or reference monuments of concrete, natural stone, iron, live bearing trees or equivalent material. If applicable, also show a minimum of two(2) bearing and distance ties to any other monument found and not accepted; including the bearing and distance from the accepted monument. Indicate the basis for bearings of reference ties if not referenced to magnetic north.

NORTH



SCALE: 1" = 20'

Unless otherwise indicated, all bearing tree ties are to a .25" dia. by 2.5" long PK nail with a 1.25" dia. steel washer driven into unblazed right face and a .25" dia. by 2.5" long PK nail with a 2" dia. steel washer stamped 'BT' is also driven into unblazed face of bearing tree at DBH; the basis for measured bearings is magnetic to nearest degree and all tie distances are horizontal measure to nearest 1/100th feet.

WITNESS MONUMENT TIES:

- ① New BT 8" Mr N06°W 24.84'.
 - ② New BT 6" Mr West trunk of three S73°E 18.24'.
 - ③ New Tie in older BT 9" Mr twin S18°W 10.16'; 60d spike found in left face.
 - ④ Older BT 60d spike in right face of 11" Or S53°W 14.52'.
 - ⑤ New BT 8" Or N80°W 12.94' to PK nail/washer in left face.
- Standard white poly 'T' marker post also found and reset 15" North of corner monument.

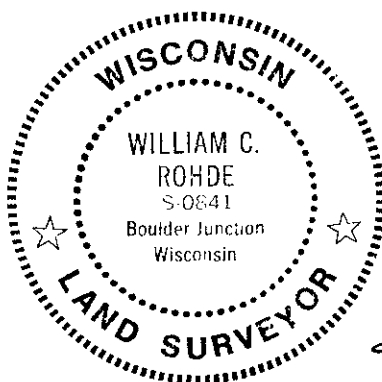
LAND SURVEYOR CERTIFICATION:

I, William C. Rohde, hereby certify that I am a duly licensed Professional Land Surveyor in Wisconsin, that this USPLS monument location was determined by me or under my direction and control, and that this U.S. Public Land Survey Monument Location Record is true and correct to the best of my knowledge and belief.

William C. Rohde Date: 4-29-98
Signature

	1		

INDEX NO.



RLS SEAL

SHEET NO. 1 OF 1

This form is intended to fulfill requirements of Chapter A-E 7.08 (3)(a)(b)(c)(d)(e)(f)(g)(h)(i) U.S. Public Land Survey Monument Location Record, Wisconsin Administrative Code. Use reverse side for geodetic location data and/or continuation purposes.

SECTION LOCATION MAP

INDEX NO. C 21
3809022000

US PUBLIC LAND SURVEY MONUMENT RECORD

Per Wis. Admin. Code § A-E 7.08, a U.S. public land survey monument record shall be prepared and filed with the county survey records as part of any land survey within 60 days of setting or accepting the corner, which includes or requires the perpetuation, restoration, or use of a U.S. public land survey corner and when any of the situations in Wis. Admin. Code § A-E 7.08(1)(a), 7.08(1)(b) or 7.08(1)(c) arise.

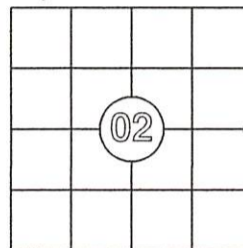
3(a) Corner location:

Found Oneida County aluminum pipe/cap as noted by Rohde, 1998
East 1/4 Corner
Section 2
Township 38 North
Range 9 East
4th Principal Meridian
Town of Sugar Camp
Oneida Co., WI

WISCRS:

N: 228285.08
E: 287459.21
N: (Rec) 228285.02
E: (Rec) 287459.23
Datum: NAD 83 (2011)
GNSS Control: WISCORS Network
GNSS Method: RTK-Direct
Verification Method: 1

The coordinate value, if shown, has been verified by at least one of the following methods: 1) comparison to a previously GNSS determined published value; 2) The value is the average of two or more GNSS observations at markedly different times; 3) one or more distances were measured to the corner from temporary GNSS observed offset locations.



CORNER ID:
3809022000

(b) History of Original Corner Establishment

Corner Set: Wood Post
Original Surveyor: Wm. Daugherty
Date of Survey: July, 1863

Original Bearing Trees:
Hemlock, 7" N 53° W, 8 links
Red Oak, 18" S 12° E, 36 links

(b)(f)(g)(h) Description of monument found at this corner and, if it was accepted, state all evidence (material, testimonial, occupational, plats, record, other monuments) used as a basis for establishing location. If re-establishing through lost corner proportionate methods, indicate all monuments, distances and directions used to establish this location. Indicate type of monument and sign post found or set.

This is a continuation of a previous USPLSS Monument Record by Surveyor William Rohde (1998). See previous record for additional history on this corner.

1998 to 2/10/2024: Multiple surveyors have accepted and used this corner as the East 1/4 corner of Section 18, as described by Rohde. See Oneida County Land Information Online Land Survey Maps for those surveys.

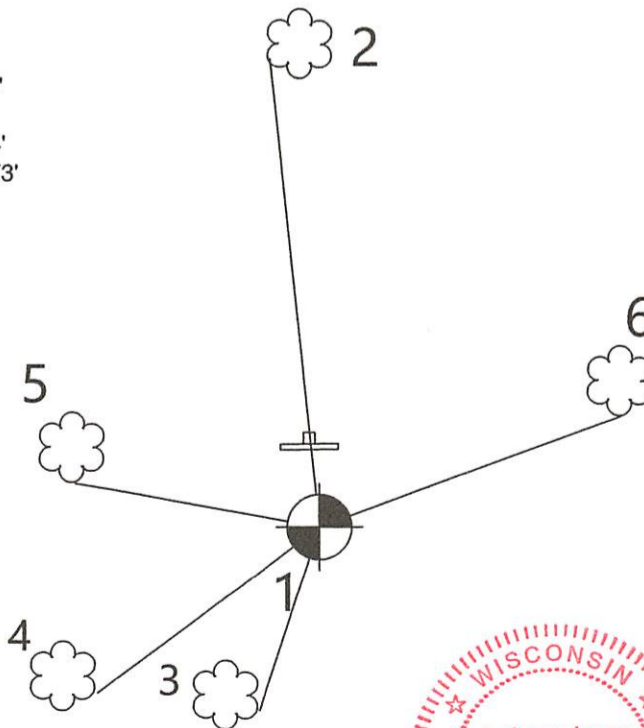
2/10/2024: I found and accepted the 2" diameter aluminum pipe with an Oneida County aluminum cap, as described by Rohde in 1998, in good condition.

(4). I located and made witnesses as shown below.

(c)(d)(e) Plan view of corner with ties to at least 4 witness monuments. If in disagreement with previously established corner, show the distances between the two corners and also indicate the ties to the disputed.

NOTE: Rohde's BT #2 is gone. New nails were set in existing BTs because they have been grown over.

1. Oneida County aluminum monument/cap
 2. Set new nail in 8" red maple, N 6° W, 24.55'
 3. Found nail in 9" twin red maple, S 18° W, 10.16'
 4. Set new nail in 11" red oak, S 53° W, 14.52'
 5. Found nail/washer in 8" red oak, N 80° W, 12.94'
 6. Set nail in new BT, 12" red maple, N 70° E, 16.73'
- Plastic, white sign post, N 1.25'



Bearings: Magnetic

Scale: 1"=10'



(i) I, Anthony R. Jones, Wisconsin Professional Land Surveyor No S-2508, hereby certify that the corner location shown on this record was determined by me, or under my direction or control, and that this U.S. Public Land Survey Monument Record is correct and complete to the best of my knowledge and belief.

Anthony R. Jones
Anthony R. Jones, PLS No. S-2508

2/10/24
Date

Index No. _____