

# U.S. PUBLIC LAND SURVEY MONUMENT RECORD

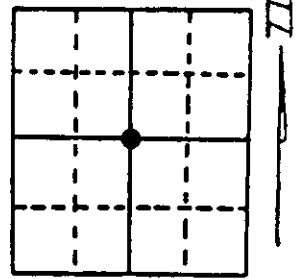
Note: This form is intended and designed to fulfill all requirements of Wisconsin Administrative Code, Chapter A-E 7.08 U.S. Public Land Survey Monument Record (3) (a) (b) (c) (d) (e) (f) (g) (h) (i). An additional sheet may be added if necessary to conform with said requirements.

(a) Corner location: Township 38 North

Range 9 East/West

Town/City/Village SUGAR CAMP

County ONEIDA

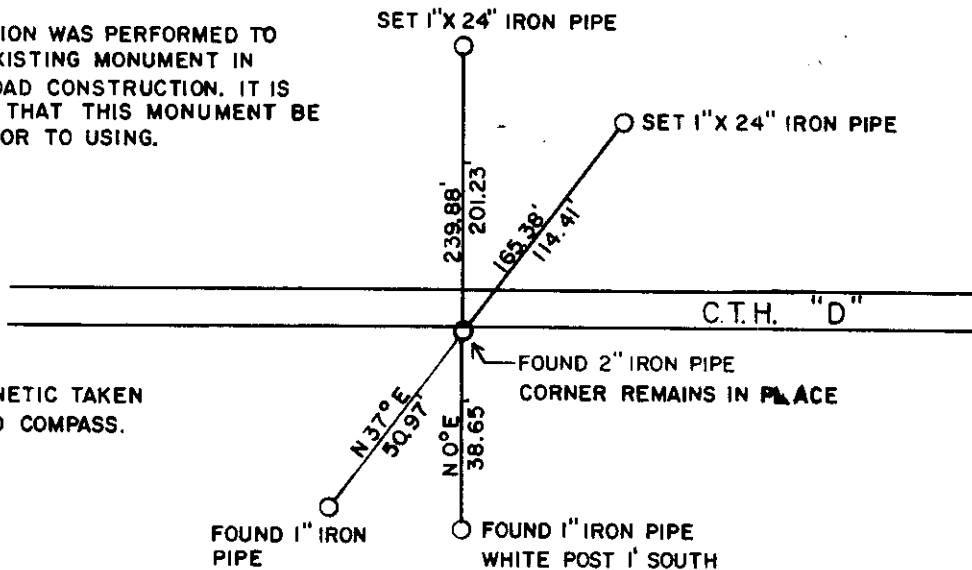


Section 2

(b) (f) (g) (h) Description of monument found at this corner and if it was accepted, state all evidence (material, testimonial, occupational, plats, records, other monuments) used as a basis for accepting. If not accepted or if nothing was found, state evidence used as basis for establishing location. If reestablished through lost corner proportionate methods, indicate all monuments, distances and directions used to establish. Indicate type of monument found or set and sign post.

(c) (d) (e) Plan view of corner with ties to at least 4 witness monuments. If in disagreement with previously established corner, show the distances between the two corners and also indicate the ties to the disputed corner.

THIS RESTORATION WAS PERFORMED TO PROTECT AN EXISTING MONUMENT IN ADVANCE OF ROAD CONSTRUCTION. IT IS RECOMMENDED THAT THIS MONUMENT BE EVALUATED PRIOR TO USING.

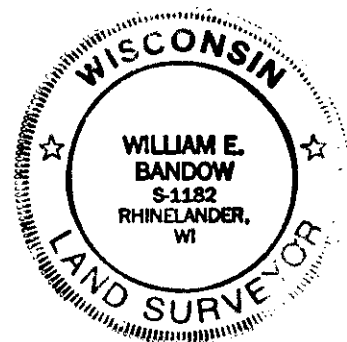


BEARINGS MAGNETIC TAKEN WITH HANDHELD COMPASS.

NO SCALE

(i) I, WILLIAM E. BANDOW  
 (type or print name) certify that the corner location on this record was determined by me or under my direction and control and that this U.S. Public Land Survey Monument Record is correct and complete to the best of my knowledge and belief.

William E. Bandow 6-24-98  
 Signature Date



Stamp

Index No. C 19  
380902 2020