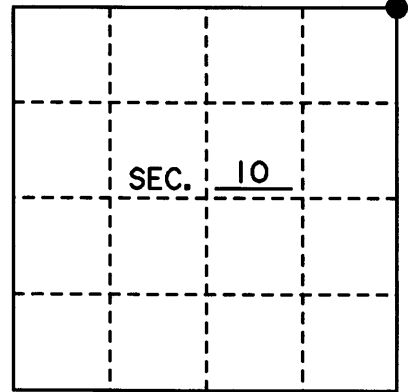


U.S. PUBLIC LAND SURVEY MONUMENT RECORD

Note: This form is intended and designed to fulfill all requirements of Wisconsin Administrative Code, Chapter A-E 7.08 U.S. Public Land Monument Record (3)(a)(b)(c)(d)(e)(f)(g)(h)(i). An additional sheet may be added if necessary to conform with said requirements.

(a) CORNER LOCATION: Northeast County or State Plane Coordinates
Section 10 Corner of Section 10 Northing _____
 Township 38 North Easting _____
 Range 9 East Datum Base _____
 Township/City Sugar Camp County of Oneida



(b) HISTORY OF ORIGINAL CORNER ESTABLISHMENT Original B.T.'s
 Original Surveyor: William E. Daugherty Birch 14° N 4° W 26lks
 Date of Survey: 1863 Sugar 10° S 13° E 26lks

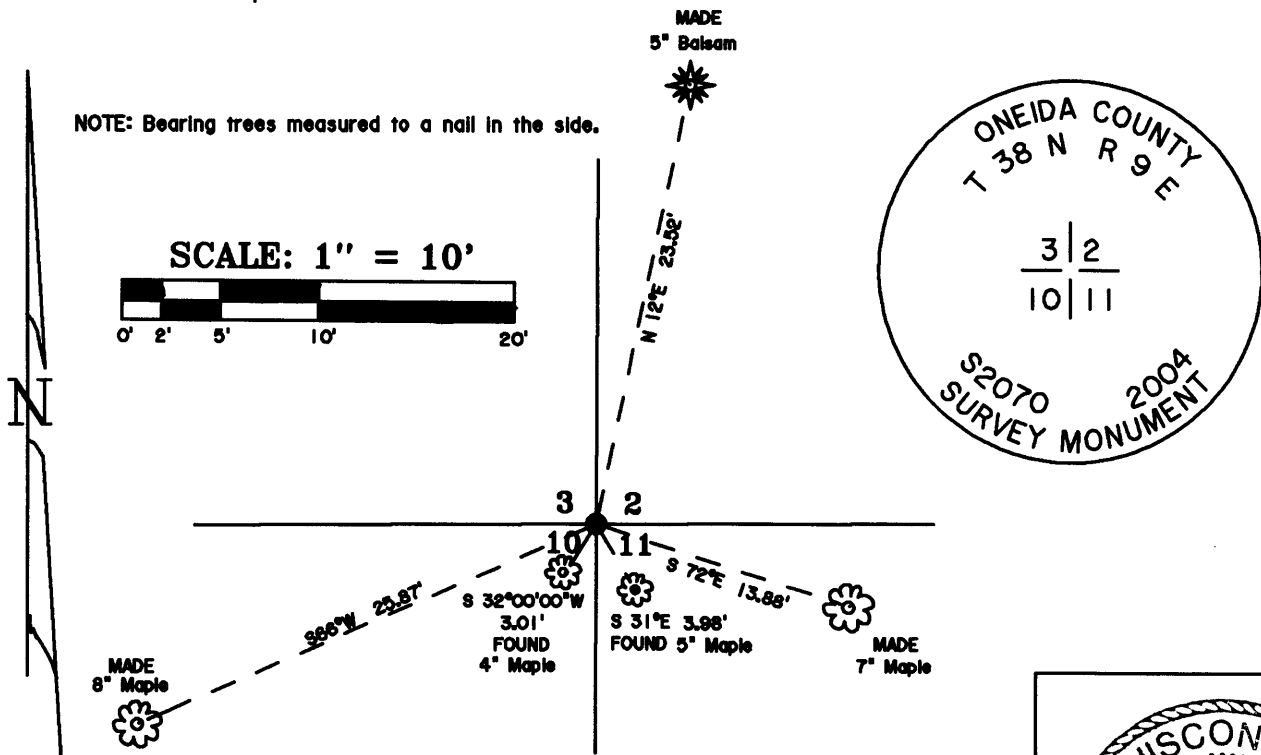
(b)(f)(g)(h) Description of monument found at this corner and if it was accepted, state all evidence (material, testimonial, occupational, plats, records, other monuments) used as a basis for accepting. If not accepted or if nothing was found, state evidence used as basis for establishing location. If reestablished through lost corner proportionate methods, indicate all monuments, distances and directions used to establish. Indicate type of monument and sign post found or set.

1863 WILLIAM E. DAUGHERTY SET A WOOD POST AS THE SECTION CORNER IN HIS ORIGINAL SURVEY.

12-1-88 JEAN F. RESVICK SHOWS A CORNER POSITION FOR THE NORTHWEST CORNER OF SECTION 11, BUT DOES NOT STATE WHAT TYPE OF MONUMENT MARKS THE CORNER.

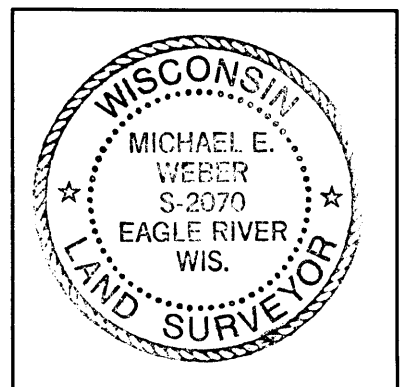
JUNE 2004 I, MICHAEL E. WEBER, FOUND A 1 1/4" WELL POINT AT THE CORNER POSITION. I ALSO FOUND TWO BEARING TREES AS SHOWN BELOW. I REPLACED THE WELL POINT WITH AN ONEIDA COUNTY ALUMINUM MONUMENT STAMPED AS SHOWN BELOW TO IDENTIFY THE CORNER. I ALSO MADE TWO NEW BEARING TREES AS SHOWN BELOW. I SET A PLASTIC SIGN POST 1' NORTHEAST OF THE CORNER.

(c)(d)(e) Plan view of the corner with ties to at least 4 witness monuments. If in disagreement with previously established corner, show the distances between the two corners and also indicate the ties to the disputed.



(i) I, Michael E. Weber R.L.S. No. #2070
 hereby certify that the corner location on this record was determined by me or under my direction and control and that this U.S. Public Land Survey Monument Record is correct and complete to the best of my knowledge and belief.

Signature Michael E. Weber Date 10/15/04



Index No. E-17

3809030000