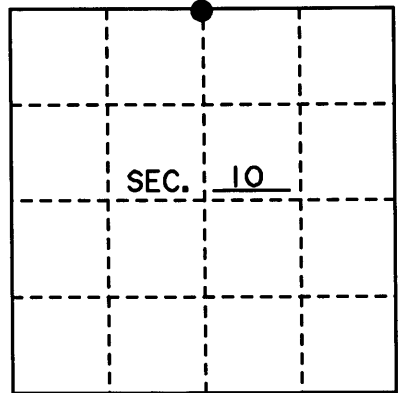


U.S. PUBLIC LAND SURVEY MONUMENT RECORD

Note: This form is intended and designed to fulfill all requirements of Wisconsin Administrative Code, Chapter A-E 7.06 U.S. Public Land Monument Record (3)(a)(b)(c)(d)(h)(7)(g)(h)(D). An additional sheet may be added if necessary to conform with said requirements.

(a) CORNER LOCATION: North Line County or State Plane Coordinates
North 1/4 Corner of Section 10 Northing _____
 Township 38 North Easting _____
 Range 9 East Datum Base _____
 Township/City Sugar Camp County of Oneida



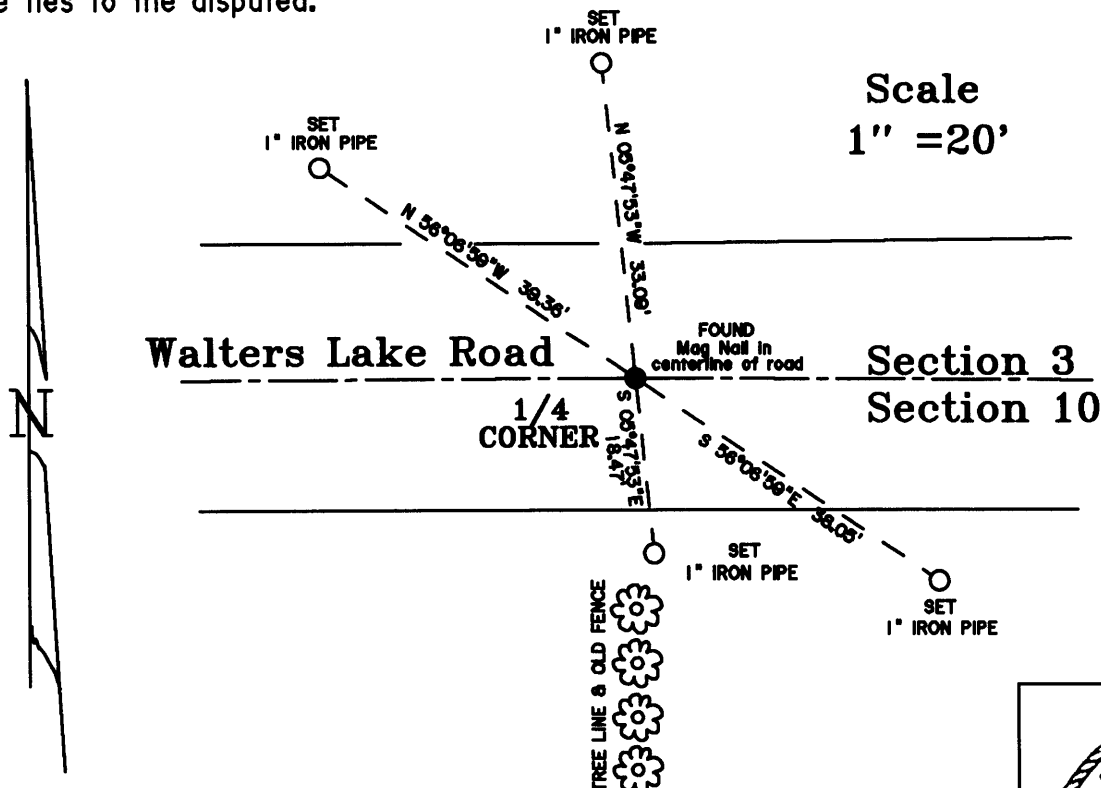
(b) HISTORY OF ORIGINAL CORNER ESTABLISHMENT Original B.T.'s
 Original Surveyor: William E. Daugherty Sugar 10° N 32°E 32lks
 Date of Survey: 1863 Sugar 10° S 61°E 16lks

(b)(f)(g)(h) Description of monument found at this corner and if it was accepted, state all evidence (material, testimonial, occupational, plats, records, other monuments) used as a basis for accepting. If not accepted or if nothing was found, state evidence used as basis for establishing location. If reestablished through lost corner proportionate methods, indicate all monuments, distances and directions used to establish. Indicate type of monument and sign post found or set.

MAY 1907 VAUGHN FOUND 1/4 CORNER AND ORIGINAL BEARING TREES.

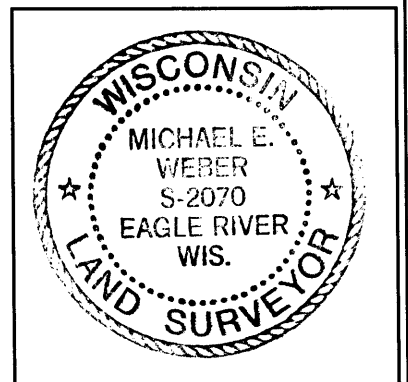
JUNE 2004 I, MICHAEL E. WEBER, FOUND A MAGNETIC NAIL IN CENTER LINE OF WALTER'S LAKE ROAD IN LINE WITH A TREE LINE AND OLD FENCE LINE TO THE SOUTH. NO RECORD OR QUERY OF LOCAL SURVEYORS WERE FOUND TO SUPPORT THIS POSITION. I BELIEVE THE NAIL WAS SET BY A SURVEYOR BASED ON RELATED EVIDENCE AND FITS THE OCCUPATIONAL EVIDENCE OF THE TREE AND FENCE LINE. THEREFORE I ACCEPTED THE MAGNETIC NAIL AS THE 1/4 CORNER AND SET FOUR IRON PIPE REFERENCE PIPE AS SHOWN BELOW. I SET A PLASTIC SIGN POST 1' NORTHEAST OF THE NORTH IRON PIPE REFERENCE.

(c)(d)(e) Plan view of the corner with ties to at least 4 witness monuments. If in disagreement with previously established corner, show the distances between the two corners and also indicate the ties to the disputed.



(i) I, Michael E. Weber R.L.S. No. #2070
 hereby certify that the corner location on this record was determined by me or under my direction and control and that this U.S. Public Land Survey Monument Record is correct and complete to the best of my knowledge and belief.

Signature Michael E. Weber Date 10/15/2004



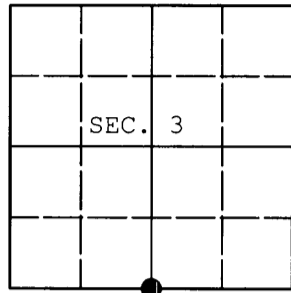
Index No. E-15

3809030020

U. S. PUBLIC LAND SURVEY MONUMENT RECORD

Note: This form is intended and designed to fulfill all requirements of Wisconsin Administrative Code, Chapter A-E 7.08 U.S. Public Land Survey Monument Record (3) (a) (b) (c) (d) (e) (f) (g) (h) (i). An additional sheet may be added if necessary to conform with said requirements.

(a) CORNER LOCATION: WISCRS (Oneida County)
1/4 Cor. of Secs. 3 & 10 N: 224,934.69 USft
Township 38 North E: 279,600.66 USft
Range 9 East of the 4th P.M. Datum: NAD 1983(2011)
Town of Sugar Camp County of Oneida



(b) HISTORY OF ORIGINAL CORNER ESTABLISHMENT

Original Surveyor: Original Accessories:
Date of Survey: Commenced:
Completed:

(b) (f) (g) (h) Description of monument found at this corner and if it was accepted, state all evidence (material, testimonial, occupational, plats, records, other monuments) used as a basis for accepting. If not accepted or if nothing was found, state evidence used as basis for establishing location. If re-established through lost corner proportionate methods, indicate all monuments, distances and directions used to establish. Indicate type of monument and sign post found or set.

NOTE: This is a perpetuation of a previous USPLS Monument Record by Michael E. Weber, RLS dated December 15, 2004 and filed in the office of the Oneida County Register of Deeds. A complete history of the corner can be found on the previous monument record. I accept the previous location as a true and faithful perpetuation or reestablishment of the original corner location and further perpetuate it as follows.

May 21, 2014: I found and accepted Weber's monument, a magnetic PK nail in the road centerline. Weber's accessories were found in substantial agreement with his previous record and were not remeasured as the sole purpose of this work is to report the coordinates of the corner point.

The coordinates shown were derived from a direct RTN GPS observation referenced to the WISCORS network.

(c) (d) (e) Plan view of corner with ties to at least 4 witness monuments. If in disagreement with previously established corner, show the distances between the two corners and also indicate the ties to the disputed.

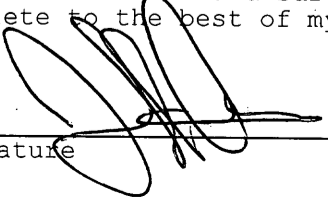
REGISTER OF DEEDS OFFICE
ONEIDA COUNTY
FILED

JUL 03 2014

AT _____ O'CLOCK _____ M
KYLE J. FRANSON
REGISTER OF DEEDS

(i) I, Jeffrey W. Austin, Registered Land Surveyor No. S-1885, hereby certify that the corner location on this record was determined by me or under my direction and control and that this U.S. Public Land Survey Monument Record is correct and complete to the best of my knowledge and belief.




Signature

JUNE 28, 2014
Date