

FEB 08 2023

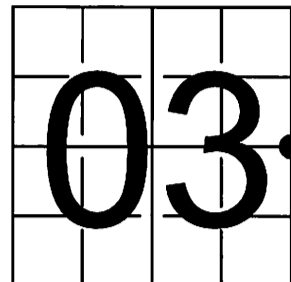
JOSE J. FROSTEN
REGISTER OF DEEDS

U S PUBLIC LAND SURVEY MONUMENT RECORD - ADDENDUM

NOTE: This form is intended and designed to fulfill all requirements of Wisconsin Administrative Code, Chapter A-E 7.08 U.S. Public Land Survey Monument Record (3) (a-i)

A-E 7.08(3)(a) Identity of corner
EAST 1/4 CORNER OF SECTION 03
TOWNSHIP 38 NORTH
RANGE 09 EAST OF THE 4TH PM
TOWN OF SUGAR CAMP,
COUNTY OF ONEIDA

WISCORS - ONEIDA COUNTY
N: 227,724.081 USft (227,724.154)
E: 282,221.884 USft (282,221.920)
Datum: NAD83 (2011)
GNSS Method RTN - Direct
GNSS Control WISCORS VRS



The coordinate value shown has been verified by the average of two or more GPS observations at a markedly different time. Values shown in parenthesis, are previously published measurements.

A-E 7.08(3)(b) Description of any record evidence, monument evidence, occupational evidence, testimonial evidence, or any other material evidence.

Original Surveyor: William E. Daugherty

Date of Original Survey	Commenced:	September 14, 1863	Original Accessories:			
	Completed:	September 21, 1863	Birch	10	S 48° W	5
			Birch	12	S 22° E	13

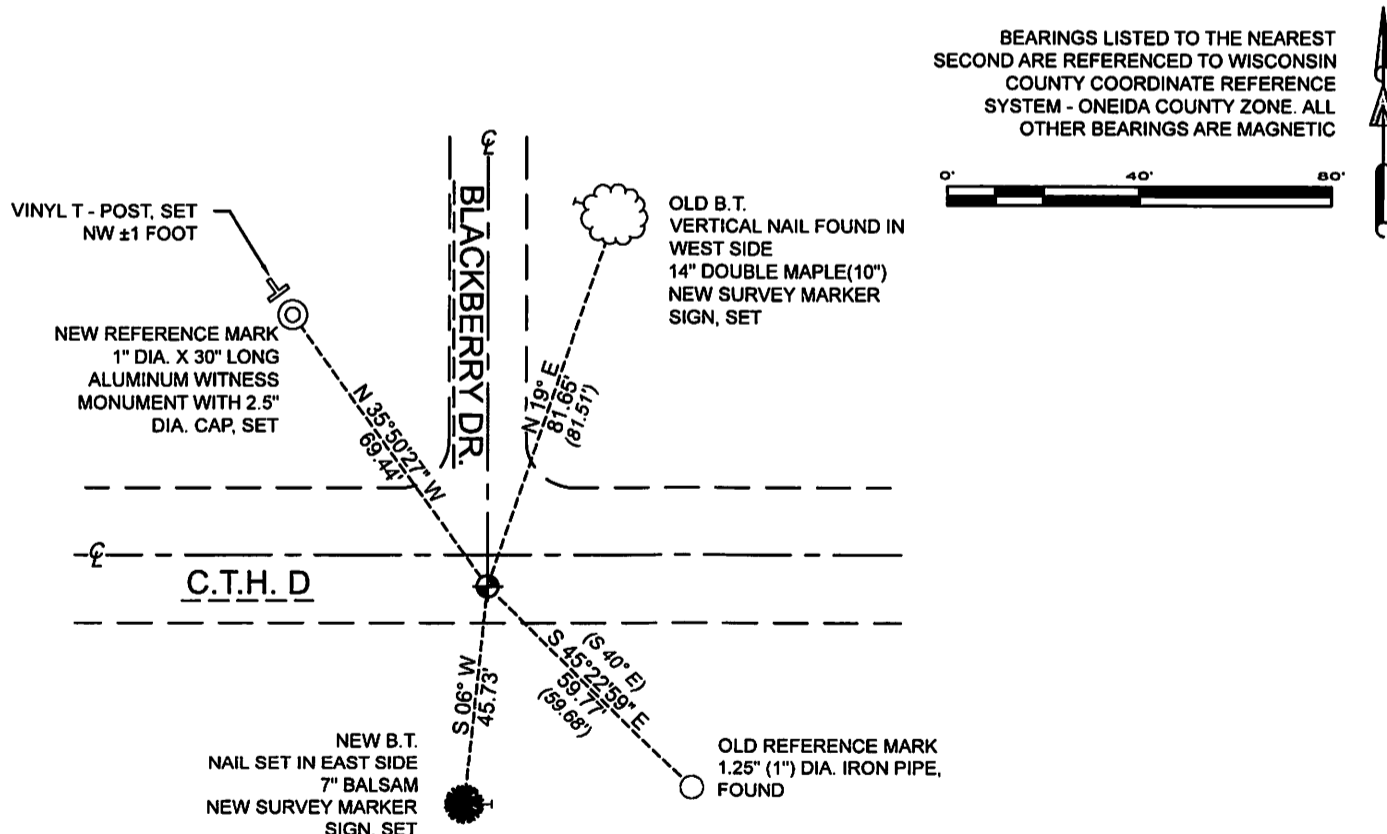
See Previous Monument Record: Index No. C-17 - June 24, 1998 - Surveyor S1182 - William E. Bandow - Thence:

May 26, 2004 - Surveyor 2070 - Michael E. Weber - indicates this position as "P.K. nail found in place" on O.C.S. Map B5712.
February 02, 2007 - Surveyor 1523 - Todd J. Loftus - indicates this position as "subdivisional monument." on O.C.S. Map B6541.
March 16, 2007 - Surveyor 2070 - Michael E. Weber - indicates this position as "P.K. nail found in place" on O.C.S. Map B6983.
May 16, 2007 - Surveyor 1523 - Todd J. Loftus - indicates this position as "subdivisional monument." on Oneida Co. Map A1904.
January 19, 2009 - Surveyor 2070 - Michael E. Weber - indicates this position as "P.K. nail found in place" on O.C.S. Map A2237.

June 01, 2022 - At the request of Oneida County Land Information, I found: a survey marker spike ±6.5 feet south of County Trunk Highway D centerline. I also found 2 of Bandow's reference monuments established as noted on U.S. Public Land Survey Monument Record C-17.

A-E 7.08(3)(f) I accept this monument as a FOUND PERPETUATED LOCATION OF THE CORNER and established 2 new witnesses as shown below.

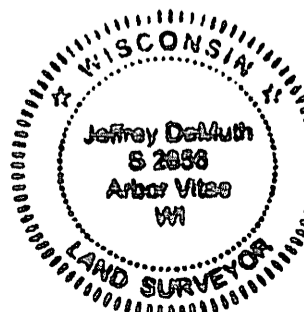
A-E 7.08(3)(c)(d)(e)(h) Plan view of corner with references to at least 4 witness monuments. If in disagreement with previously established corner, show the distances between the two corners and also indicate the ties to the disputed. The directions and distances to other public land survey corners used as evidence or used for determining the corner location.



A-E 7.08(3)(i) I, Jeffrey L. DeMuth, Professional Land Surveyor No. S-2656, hereby certify that the corner location on this record was determined by me or under my direction and control and that this U.S. Public Land Survey Monument Record is correct and complete to the best of my knowledge, and belief

January 17, 2023
DATE

SIGNATURE



C-17
43809032000