

U.S. PUBLIC LAND SURVEY MONUMENT LOCATION RECORD

Recorders Data

CORNER: NW Section SECTION: 10 TOWNSHIP 38 NORTH RANGE 9 EAST/WEST

FOR M.C. CORNER INDICATE: NAME OF WATERWAY N/A SECTION LINE N/A

(CITY/VILLAGE/TOWN) OF: Sugar Camp COUNTY OF: Oneida

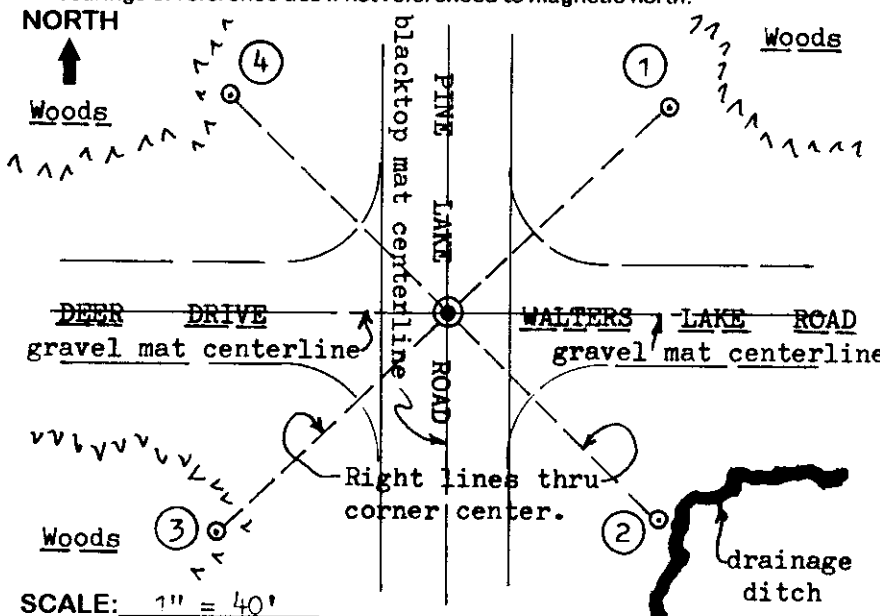
Description of monument found or placed and all other evidence used as a basis for monument location; including all monuments and related measurements required if the corner location is reestablished by lost corner proportionate methods. Also indicate name of original surveyor, survey date, corner monument set and established bearing trees, witness or reference monuments with ties from available records.

I found and accepted a 60d spike previously set in a 4" dia. chiseled out cavity in the existing blacktop roadway mat, within 6" of the juncture of roadway centerlines to the North, South, East & West. No other corner evidence was observed or detected within a half chain radius. Although no supporting records nor query of local area surveyors would substantiate the spike found, I am of the opinion that it was set upon the basis of related evidence by a surveyor, and that its location fits within acceptable limits to possessory occupational evidence as noted herein. Therefore, I replaced the older spike with a 3/4" dia. by 12" long steel rod with top 1" below the blacktop road mat surface and also set a 1/4" dia. by 2 1/2" long PK nail 12" North, South, East and West on right lines thru the steel rod center to further aid future recovery and usage. Recovery completed September 16, 1998.

In 1863, Daugherty/ GLO, set a wood post as the original section corner and marked OBTs, a 14" Tam N31°E 25 lks and a 16" Tam S45°W 15 lks, which are all now obliterated within the existing roadway area.

In 1902, Vaughn noted a post at this corner from GLO BTs and new BTs, a 7" Hemlock S45°E 74 1/2 lks and an 8" Bw N15°E 106 lks, which are also now obliterated; his 1902, 1907 and 1909 notes denoted surveys for roadway and section subdivision purposes. An old fenceline South of Deer Drive now measures 1372.0' West of corner compared to 1372.8' by Vaughn; and a fence South of Walters Lake Road is 2659.5' East compared to Vaughns 2661.1'.

Plan view map of monument location with bearing and distance ties to a minimum of four(4) described witness or reference monuments of concrete, natural stone, iron, live bearing trees or equivalent material. If applicable, also show a minimum of two(2) bearing and distance ties to any other monument found and not accepted; including the bearing and distance from the accepted monument. Indicate the basis for bearings of reference ties if not referenced to magnetic north.



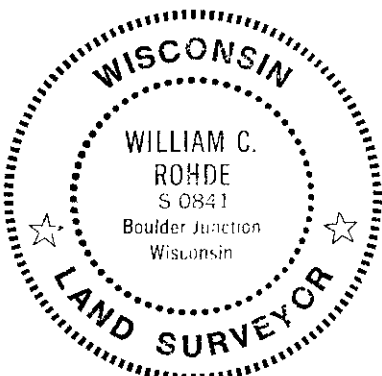
WITNESS MONUMENT TIES:

- ① 1" dia. by 48" long iron pipe set with standard Reference Mark cap N47°E 46.96'.
- ② 1" dia. by 26" long iron pipe set with standard Reference Mark cap S45°E 41.24'.
- ③ 1" dia. by 48" long iron pipe set with standard Reference Mark cap S47°W 50.20'.
- ④ 1" dia. by 48" long iron pipe set with standard Reference Mark cap N45°W 48.19'.

Note: Standard white poly 'T' marker post set 6" NE of NE iron pipe witness monument.

SCALE: 1" = 40'

Unless otherwise indicated, all bearing tree ties are to a .25" dia. by 2.5" long PK nail with a 1.25" dia. steel washer driven into unblazed right face and a .25" dia. by 2.5" long PK nail with a 2" dia. steel washer stamped 'BT' is also driven into unblazed face of bearing tree at DBH; the basis for measured bearings is magnetic to nearest degree and all tie distances are horizontal measure to nearest 1/100th feet.



RLS SEAL

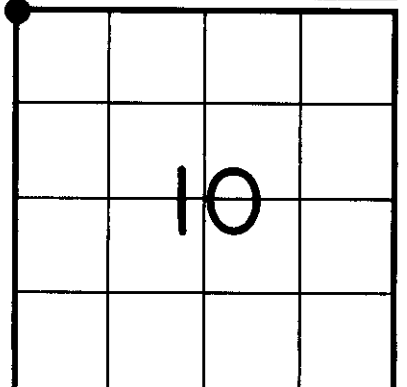
SHEET NO. 1 OF 1

LAND SURVEYOR CERTIFICATION:

I, William C. Rohde, hereby certify that I am a duly licensed Professional Land Surveyor in Wisconsin, that this USPLS monument location was determined by me or under my direction and control, and that this U.S. Public Land Survey Monument Location Record is true and correct to the best of my knowledge and belief.

William C. Rohde Date: 9-27-98
Signature

This form is intended to fulfill requirements of Chapter A-E 7.08 (3)(a)(b)(c)(d)(e)(f)(g)(h)(i) U.S. Public Land Survey Monument Location Record, Wisconsin Administrative Code. Use reverse side for geodetic location data and/or continuation purposes.



SECTION LOCATION MAP

INDEX NO. E 13

3809040000

INDEX NO. E 13

