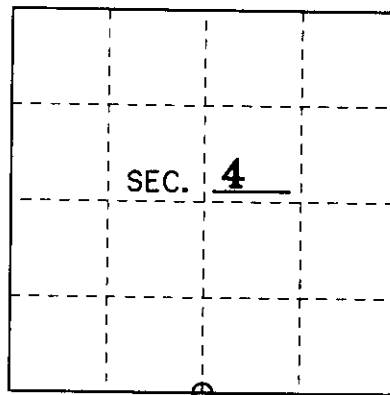


U.S. PUBLIC LAND SURVEY MONUMENT RECORD

Note: This form is intended and designed to fulfill all requirements of Wisconsin Administrative Code, Chapter A-E 7.08 U.S. Public Land Monument Record (3)(a)(b)(c)(d)(e)(f)(g)(h)(i). An additional sheet may be added if necessary to conform with said requirements.

(a) CORNER LOCATION: SOUTH 1/4 County or State Plane Coordinates
 _____ Corner of Section 4 Northing _____
 Township 38 North Easting _____
 Range 9 East Datum Base _____
 Township/City Sugar Camp County of ONEIDA



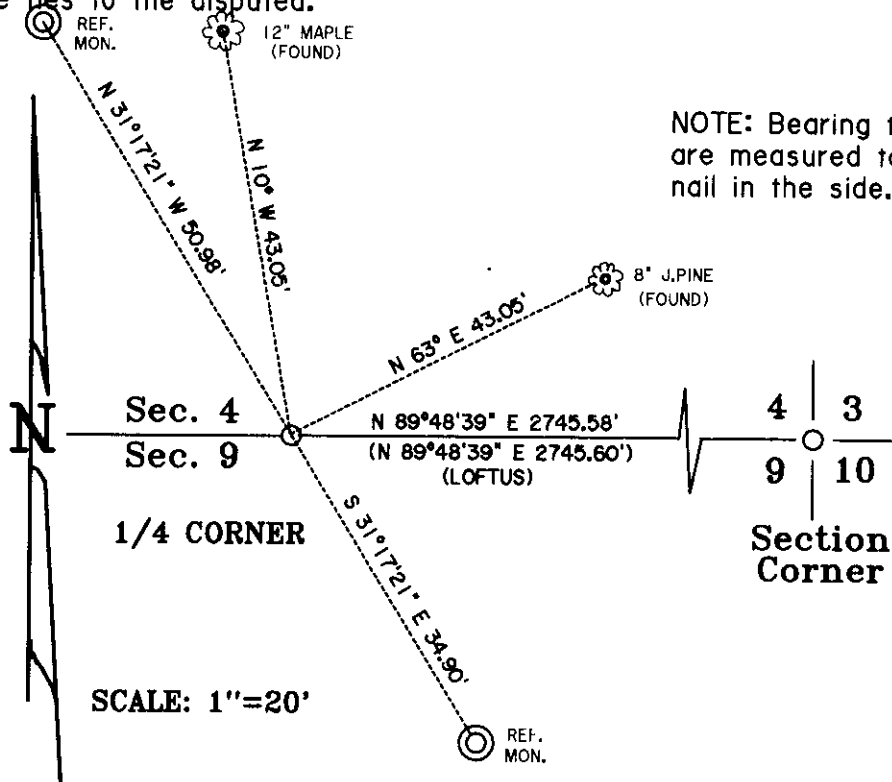
(b) HISTORY OF ORIGINAL CORNER ESTABLISHMENT Original B.T.'s
 Original Surveyor: W.E. Daugherty 8" Hem. N 58° E 20 Lks.
 Date of Survey: Sept 1863 12" Birch S 57° W 7 Lks.

(b)(f)(g)(h) Description of monument found at this corner and if it was accepted, state all evidence (material, testimonial, occupational, plats, records, other monuments) used as a basis for accepting. If not accepted or if nothing was found, state evidence used as basis for establishing location. If reestablished through lost corner proportionate methods, indicate all monuments, distances and directions used to establish. Indicate type of monument and sign post found or set.

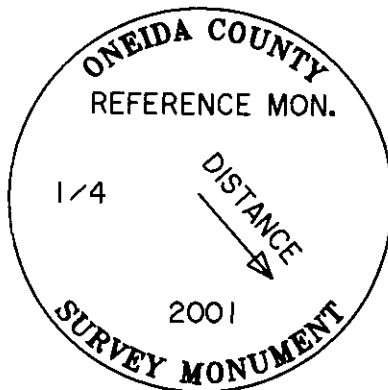
9/28/1998 TODD LOFTUS SET CORNER.

11/29/2001 I, MICHAEL E. WEBER, FOUND A 1" IRON PIPE 3 FEET SOUTH OF THE CENTER LINE AND APPROXIMATELY AT THE END OF THE TOWN ROAD. I FOUND THE FOLLOWING B.T.'S: 8" J.PINE N 63° E 55.60 FEET AND A 12" MAPLE N 10° W 43.05 FEET. I REFERENCED THIS IRON PIPE OFF WITH TWO ONEIDA COUNTY ALUMINUM MONUMENTS AND TO THE SOUTHEAST CORNER OF SECTION 4 AS SHOWN BELOW. I ALSO SET A PLASTIC SIGN POST BY REFERENCE MONUMENTS.

(c)(d)(e) Plan view of the corner with ties to at least 4 witness monuments. If in disagreement with previously established corner, show the distances between the two corners and also indicate the ties to the disputed.



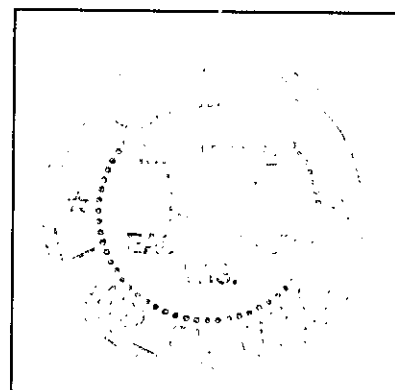
NOTE: Bearing trees are measured to a nail in the side.



SCALE: 1"=20'

(i) I, Michael E. Weber R.L.S. No. 2070
 hereby certify that the corner location on this record was determined by me or under my direction and control and that this U.S. Public Land Survey Monument Record is correct and complete to the best of my knowledge and belief.

Signature Michael E. Weber Date 12-06-2001



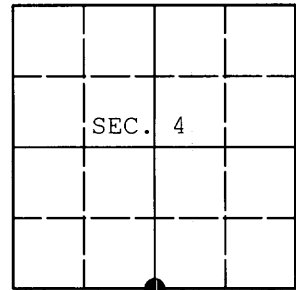
Index No. E-11

383 704 6620

U.S. PUBLIC LAND SURVEY MONUMENT RECORD

Note: This form is intended and designed to fulfill all requirements of Wisconsin Administrative Code, Chapter A-E 7.08 U.S. Public Land Survey Monument Record (3) (a) (b) (c) (d) (e) (f) (g) (h) (i). An additional sheet may be added if necessary to conform with said requirements.

(a) CORNER LOCATION: WISCRS (Oneida County)
1/4 Cor. of Secs. 4 & 9 N: 224,844.27 USft
Township 38 North E: 274,181.60 USft
Range 9 East of the 4th P.M. Datum: NAD 1983(2011)
Town of Sugar Camp County of Oneida



(b) HISTORY OF ORIGINAL CORNER ESTABLISHMENT

Original Surveyor: Original Accessories:
Date of Survey: Commenced:
Completed:

(b)(f)(g)(h) Description of monument found at this corner and if it was accepted, state all evidence (material, testimonial, occupational, plats, records, other monuments) used as a basis for accepting. If not accepted or if nothing was found, state evidence used as basis for establishing location. If re-established through lost corner proportionate methods, indicate all monuments, distances and directions used to establish. Indicate type of monument and sign post found or set.

NOTE: This is a perpetuation of a previous USPLS Monument Record by Michael E. Weber, RLS dated December 6, 2001 and filed in the office of the Oneida County Register of Deeds. A complete history of the corner can be found on the previous monument record. I accept the previous location as a true and faithful perpetuation or reestablishment of the original corner location and further perpetuate it as follows.

May 21, 2014: I found and accepted Weber's monument, a 1" diam. iron pipe. Weber's accessories were found in substantial agreement with his previous record and were not remeasured as the sole purpose of this work is to report the coordinates of the corner point.

The coordinates shown were derived from a direct RTN GPS observation referenced to the WISCORS network.

(c)(d)(e) Plan view of corner with ties to at least 4 witness monuments. If in disagreement with previously established corner, show the distances between the two corners and also indicate the ties to the disputed.

REGISTER OF DEEDS OFFICE
ONEIDA COUNTY
FILED

JUL 03 2014

AT O'CLOCK M
KYLE J. FRANSON
REGISTER OF DEEDS

(i) I, Jeffrey W. Austin, Registered Land Surveyor No. S-1885, hereby certify that the corner location on this record was determined by me or under my direction and control and that this U.S. Public Land Survey Monument Record is correct and complete to the best of my knowledge and belief.



Handwritten signature of Jeffrey W. Austin.

JUNE 28, 2014

Signature

Date