

U.S. PUBLIC LAND SURVEY MONUMENT LOCATION RECORD

Recorders Data

CORNER: West 1/4 Corner SECTION: 3 TOWNSHIP 38 NORTH RANGE 9 EAST/WEST

FOR M.C. CORNER INDICATE: NAME OF WATERWAY N/A SECTION LINE N/A

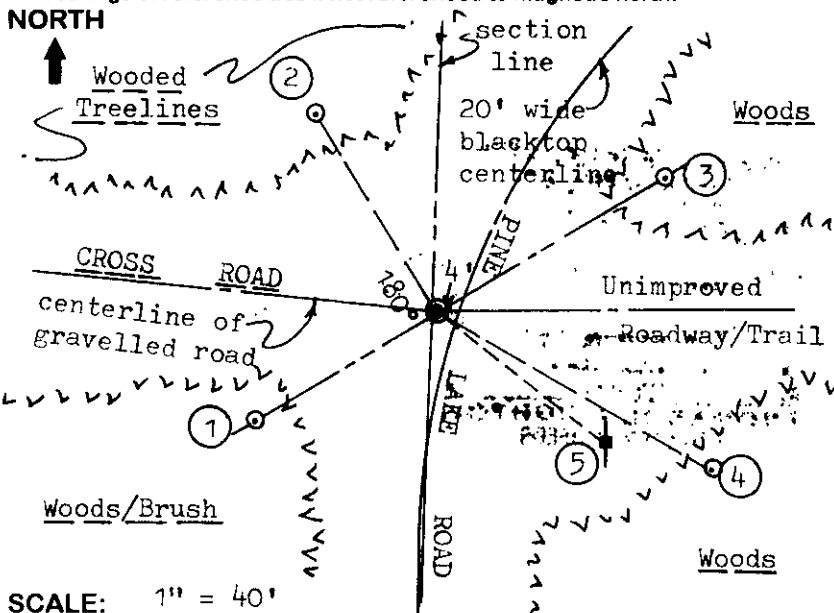
(CITY/VILLAGE/TOWN) OF: Sugar Camp COUNTY OF: Oneida

Description of monument found or placed and all other evidence used as a basis for monument location; including all monuments and related measurements required if the corner location is reestablished by lost corner proportionate methods. Also indicate name of original surveyor, survey date, corner monument set and established bearing trees, witness or reference monuments with ties from available records.

Found and accepted an old undisturbed 1 1/2" dia. iron pipe monument at this corner location with uncapped top 5" +/- below existing blacktop roadway pavement surface; I set a 1/2" dia. by 12" long iron rod in center of old iron pipe with top nearly flush with pavement and also drove a 1/4" dia. by 2 1/2" long PK nail 12" North, South, East and West of the corner in pavement surface to aid future survey usage and recovery. The PK nails are set on right lines thru the corner point as well. All original GLO survey corner evidence is obliterated, as established by William Daugherty/GLO in September 1863. In 1918, Vaughn set a 1" dia. by 20" long bolt at the corner he had referenced to a 28" Pw stump N46°E 64 lks in 1907; both are now gone. In 1955, Wincentzen noted an iron pipe at roadway center for this corner on his Plat of Survey, No. B-3710, Oneida County Surveyor Records. The corner falls 4' +/- West of pavement center line curve northerly and easterly. This recovery completed on April 23, 1998. There were no witnesses other than several vehicle passer-bys.

Reference: Plat of Survey, No. B-3710, Oneida County Surveyor Records, by T. Loftus.

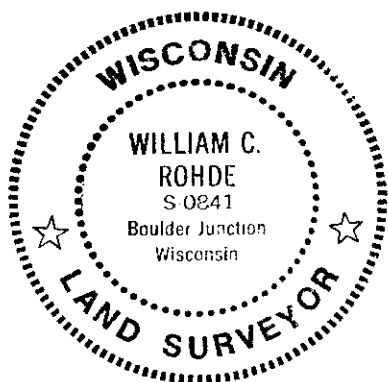
Plan view map of monument location with bearing and distance ties to a minimum of four(4) described witness or reference monuments of concrete, natural stone, iron, live bearing trees or equivalent material. If applicable, also show a minimum of two(2) bearing and distance ties to any other monument found and not accepted; including the bearing and distance from the accepted monument. Indicate the basis for bearings of reference ties if not referenced to magnetic north.



WITNESS MONUMENT TIES:

- ① 1" dia. by 24" long iron pipe monument set with standard plug in top stamped "Reference Mark" flush with existing grade N60°E 55.44' and S60°W 44.67' on a right line thru corner point.
- ② New BT 15" Pr N31°W 48.62'.
- ③
- ④ New BT 9" Pr S59°E 65.87'.
- ⑤ 20' +/- high 6" sq. wood cross painted white S51°E 44.5'.
Standard white poly 'T' marker post set 3" West of SW reference pipe.

Unless otherwise indicated, all bearing tree ties are to a .25" dia. by 2.5" long PK nail with a 1.25" dia. steel washer driven into unblazed right face and a .25" dia. by 2.5" long PK nail with a 2" dia. steel washer stamped 'BT' is also driven into unblazed face of bearing tree at DBH; the basis for measured bearings is magnetic to nearest degree and all tie distances are horizontal measure to nearest 1/100th feet.



LAND SURVEYOR CERTIFICATION:

I, William C. Rohde, hereby certify that I am a duly licensed Professional Land Surveyor in Wisconsin, that this USPLS monument location was determined by me or under my direction and control, and that this U.S. Public Land Survey Monument Location Record is true and correct to the best of my knowledge and belief.

William C. Rohde Date: 4-28-98
Signature

		3	

INDEX NO.

RLS SEAL

SHEET NO. 1 OF 1

This form is intended to fulfill requirements of Chapter A-E 7.08 (3)(a)(b)(c)(d)(e)(f)(g)(h)(i) U.S. Public Land Survey Monument Location Record, Wisconsin Administrative Code. Use reverse side for geodetic location data and/or continuation purposes.

SECTION LOCATION MAP

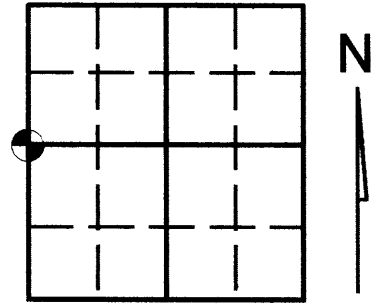
INDEX NO. C 13
3809042000

U.S. PUBLIC LAND SURVEY MONUMENT RECORD

Note: This form is intended and designed to fulfill all requirements of Wisconsin Administrative Code, Chapter A-E 7.08 U.S. Public Land Survey Monument Record (3)(a)(b)(c)(d)(e)(f)(g)(h)(i). An additional sheet may be added if necessary to conform with said requirements.

(a) Corner location: Township 38 North
 Range 09 East/West

Town/City/Village SUGAR CAMP
 County ONEIDA



Section 03

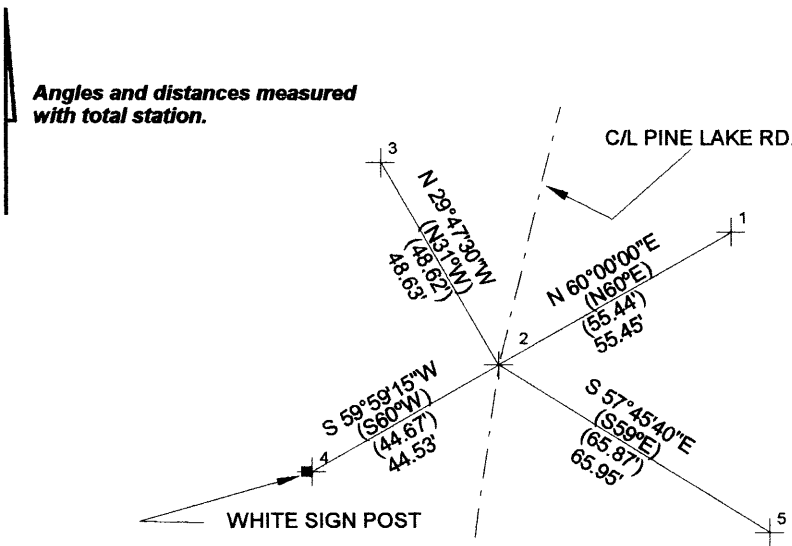
(b) (f) (g) (h) Description of monument found at this corner and if it was accepted, state all evidence (material, testimonial, occupational, plats, records, other monuments) used as a basis for accepting. If not accepted or if nothing was found, state evidence used as basis for establishing location. If reestablished through lost corner proportionate methods, indicate all monuments, distances and directions used to establish. Indicate type of monument found or set and sign post.

See U.S. Land Survey Monument Record form C-13 for history of corner.

- PRECONSTRUCTION - Found 1" iron rod as noted on above said form C-13

- APRIL 2005 POST CONSTRUCTION, KEVIN BIXBY - Found P.K. nail at location as witnessed during preconstruction. Left in place and witnessed as shown below.

(c) (d) (e) Plan view of corner with ties to at least 4 witness monuments. If in disagreement with previously established corner, show the distances between the two corners and also indicate the ties to the disputed corner.



SCALE: 1"=40'

LEGEND

- 1- EXISTING 1 IN. IRON PIPE CAPPED
- 2- EXISTING P.K. NAIL OTHERS.
- 3- 15 IN. RED PINE EXISTING BEARING TREE PK NAIL
- 4- 1 IN. IRON PIPE CAPPED
- 5- 12 IN. RED PINE EXISTING BEARING TREE PK NAIL

(i) I, KEVIN P. BIXBY

(type or print name) certify that the corner location on this record was determined by me or under my direction and control and that this U.S. Public Land Survey Monument Record is correct and complete to the best of my knowledge and belief.

Kevin P. Bixby
 Signature

04/10/05
 Date



Stamp
 3809042000

Index No. C-13