

U.S. PUBLIC LAND SURVEY MONUMENT RECORD

Note: This form is intended and designed to fulfill all requirements of Wisconsin Administrative Code, Chapter A-E 7.08 U.S. Public Land Survey Monument Record (3) (a) (b) (c) (d) (e) (f) (g) (h) (i). An additional sheet may be added if necessary to conform with said requirements.

(a) Corner location: Township 38 North Corner: NW Section Corner

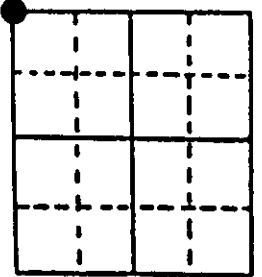
Section 15 Range 9 East Original Surveyor: William Daugherty

Town/City/Village Sugar Camp

Original B.T.'s: 10" Tam S53°W 60 lks
8" Sb N58°E 53 lks

County Oneida

Original Survey Date: September 1863



● Location

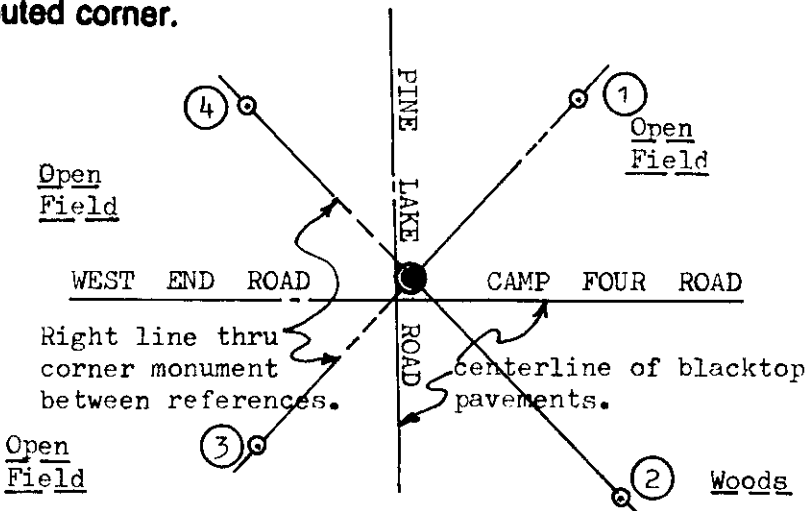
(b) (f) (g) (h) Description of monument found at this corner and if it was accepted, state all evidence (material, testimonial, occupational, plats, records, other monuments) used as a basis for accepting. If not accepted or if nothing was found, state evidence used as basis for establishing location. If reestablished through lost corner proportionate methods, indicate all monuments, distances and directions used to establish. Indicate type of monument found or set and sign post.

Found and accepted an old 1 1/2" dia. undisturbed iron pipe monument at this corner location with uncapped top nearly flush with existing blacktop roadway pavement; I drove the iron pipe top about 1" below roadway surface and set a 60 penny spike in top center as a tie point. All original GLO survey corner evidence is now obliterated. No other corner evidence or nearby reference marks were readily noted by inspection, as referred by record notes. In 1975, Norman Loftus found an iron pipe at this corner location as well for a private survey South along the West line of Section 15, but no ties were shown on his plat of survey filed in Oneida County records. This recovery was completed on April 11, 1998 and witnessed by Jim Thorn and Darwin Larson, nearby landowners, as well as several other local area residents who stopped by to query me.

Note: Corner is located about 5' East and 5' North of existing blacktop centerlines. I also set a standard white poly 'T' corner marker post 4" SE of the SE reference monument.

Reference: Plat of Survey No. B-240 Oneida County Survey Records.

(c) (d) (e) Plan view of corner with ties to at least 4 witness monuments. If in disagreement with previously established corner, show the distances between the two corners and also indicate the ties to the disputed corner.



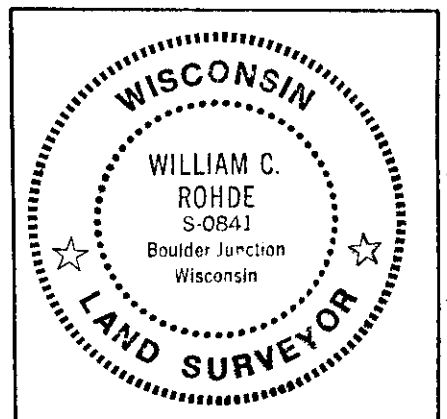
Witness Monument Ties:

- ① 1" dia. by 36" long iron pipe set with Reference Mark plug in top N43°E 50.92'.
- ② 1" dia. by 36" long iron pipe set with Reference Mark plug in top S43°E 63.55'.
- ③ 1" dia. by 36" long iron pipe set with Reference Mark plug in top S43°W 47.63'.
- ④ 1" dia. by 36" long iron pipe set with Reference Mark plug in top N43°W 49.64'.

Unless otherwise indicated, all BT witness monument ties are to a 1/4" dia. by 2.5" long PK nail with 1.25" dia. steel washer set in unblazed right face bark; and a PK nail with 2" dia. steel washer stamped BT also set in unblazed front face bark of each BT at DBH. All previous corner recovery notes from Wisconsin DNR and/or Oneida County survey records.



Scale: 1" = 40'



Index No. J-13
330900000

(i) I, William C. Rohde, RLS 841
(type or print name) certify that the corner location on this record was determined by me or under my direction and control and that this U.S. Public Land Survey Monument Record is correct and complete to the best of my knowledge and belief.

William C. Rohde
Signature

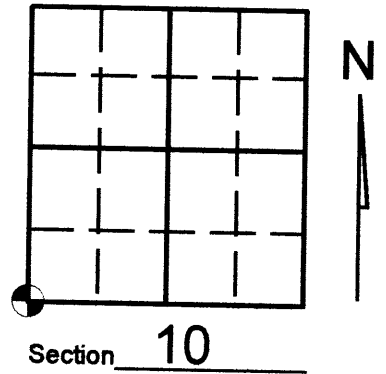
April 12, 1998
Date

U.S. PUBLIC LAND SURVEY MONUMENT RECORD

Note: This form is intended and designed to fulfill all requirements of Wisconsin Administrative Code, Chapter A-E 7.08 U.S. Public Land Survey Monument Record (3)(a)(b)(c)(d)(e)(f)(g)(h)(i). An additional sheet may be added if necessary to conform with said requirements.

(a) Corner location: Township 38 North
 Range 09 (East) West

Town/City/Village SUGAR CAMP
 County ONEIDA



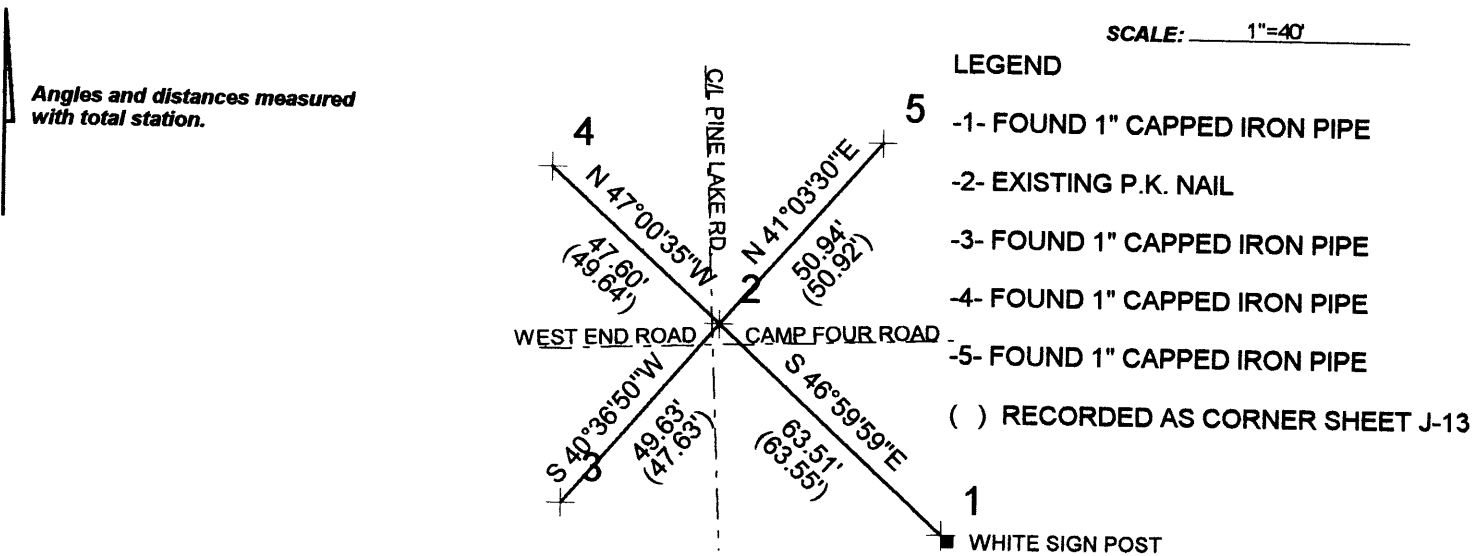
(b) (f) (g) (h) Description of monument found at this corner and if it was accepted, state all evidence (material, testimonial, occupational, plats, records, other monuments) used as a basis for accepting. If not accepted or if nothing was found, state evidence used as basis for establishing location. If reestablished through lost corner proportionate methods, indicate all monuments, distances and directions used to establish. Indicate type of monument found or set and sign post.

See U.S. Land Survey Monument Record form J-13 for history of corner.

- PRECONSTRUCTION - Found 1 1/2" iron pipe and accessories as noted on above said form J-13

- APRIL 2005 POST CONSTRUCTION, KEVIN BIXBY - Found P.K. nail by others that matched preconstruction ties. Left existing P.K. and witnessed as shown below.

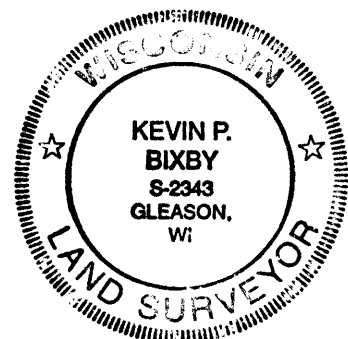
(c) (d) (e) Plan view of corner with ties to at least 4 witness monuments. If in disagreement with previously established corner, show the distances between the two corners and also indicate the ties to the disputed corner.



(i) I, KEVIN P. BIXBY

(type or print name) certify that the corner location on this record was determined by me or under my direction and control and that this U.S. Public Land Survey Monument Record is correct and complete to the best of my knowledge and belief.

Kevin P. Bixby
 Signature 04/10/05
Date



Stamp
 3809090000

Index No. J-13