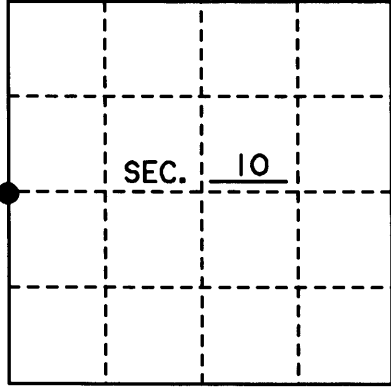


# U.S. PUBLIC LAND SURVEY MONUMENT RECORD

Note: This form is intended and designed to fulfill all requirements of Wisconsin Administrative Code, Chapter A-E 7.08 U.S. Public Land Monument Record (3)(a)(b)(c)(d)(e)(f)(g)(h)(i). An additional sheet may be added if necessary to conform with said requirements.

(a) CORNER LOCATION: West County or State Plane Coordinates  
W 1/4 Corner of Section 10 Northing \_\_\_\_\_  
 Township 38 North Easting \_\_\_\_\_  
 Range 9 East Datum Base \_\_\_\_\_  
 Township/City Sugar Camp County of Oneida



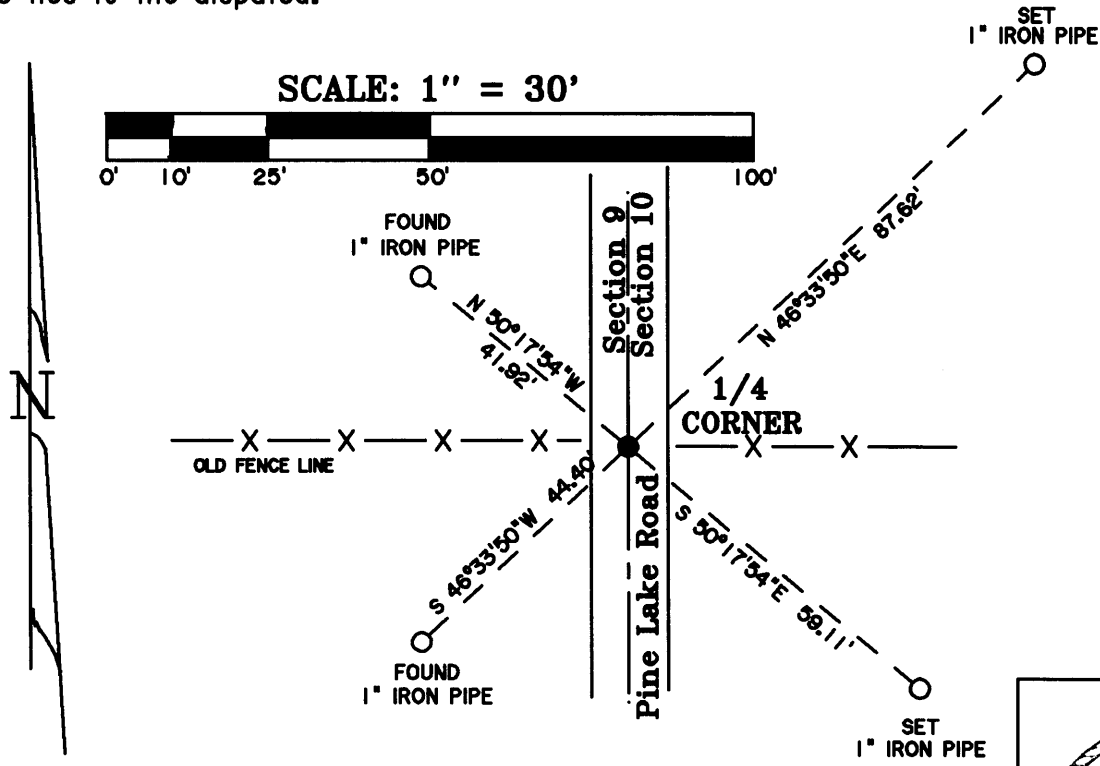
(b) HISTORY OF ORIGINAL CORNER ESTABLISHMENT Original B.T.'s  
 Original Surveyor: William E. Daugherty Birch 8° N 27°E 12ks  
 Date of Survey: 1863 Birch 14° N 13°W 19ks

(b)(f)(g)(h) Description of monument found at this corner and if it was accepted, state all evidence (material, testimonial, occupational, plats, records, other monuments) used as a basis for accepting. If not accepted or if nothing was found, state evidence used as basis for establishing location. If reestablished through lost corner proportionate methods, indicate all monuments, distances and directions used to establish. Indicate type of monument and sign post found or set.

- 1863 WILLIAM DAUGHERTY SET A WOOD POST AS THE ORIGINAL CORNER.
- 1893 DORR FOUND WEST 1/4 CORNER.
- 1907 VAUGHN FOUND DORR'S CORNER IN ROAD

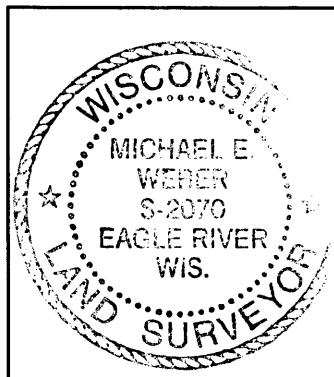
JUNE 2004 I, MICHAEL E. WEBER, COULD NOT FIND ANY EVIDENCE OF CORNER IN ROAD, BUT FOUND A FENCELINE RUNNING EAST AND WEST. I ALSO FOUND TWO IRON PIPES ON THE WEST SIDE OF THE ROAD THAT MAY HAVE BEEN REFERENCES TO THE CORNER BUT COULD NOT FIND ANY RECORD SHOWING THESE PIPE. I SET A STEEL SURVEY PIN IN THE CENTERLINE OF PINE LAKE ROAD AND IN LINE WITH THE FENCE LINES TO THE EAST AND WEST. I USED THE TWO IRON PIPE ON THE WEST SIDE OF THE ROAD AS REFERENCES AND SET TWO NEW IRON PIPE ON THE EAST SIDE OF THE ROAD AS SHOWN BELOW. I SET A PLASTIC SIGN POST 0.5' NORTHEAST OF THE NORTHEAST REFERENCE PIPE.

(c)(d)(e) Plan view of the corner with ties to at least 4 witness monuments. If in disagreement with previously established corner, show the distances between the two corners and also indicate the ties to the disputed.



(i) I, Michael E. Weber R.L.S. No. H2070  
 hereby certify that the corner location on this record was determined by me or under my direction and control and that this U.S. Public Land Survey Monument Record is correct and complete to the best of my knowledge and belief.

Signature Michael E Weber Date 10/15/2004



Index No. G-13

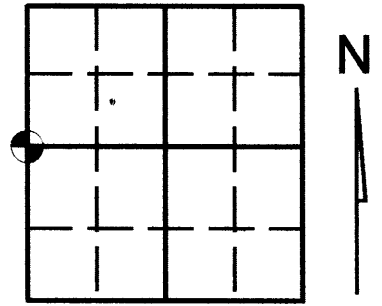
3809092000

# U.S. PUBLIC LAND SURVEY MONUMENT RECORD

Note: This form is intended and designed to fulfill all requirements of Wisconsin Administrative Code, Chapter A-E 7.08 U.S. Public Land Survey Monument Record (3)(a)(b)(c)(d)(e)(f)(g)(h)(i). An additional sheet may be added if necessary to conform with said requirements.

(a) Corner location: Township 38 North  
 Range 09 (Eas)/West

Town/City/Village SUGAR CAMP  
 County ONEIDA



Section 10

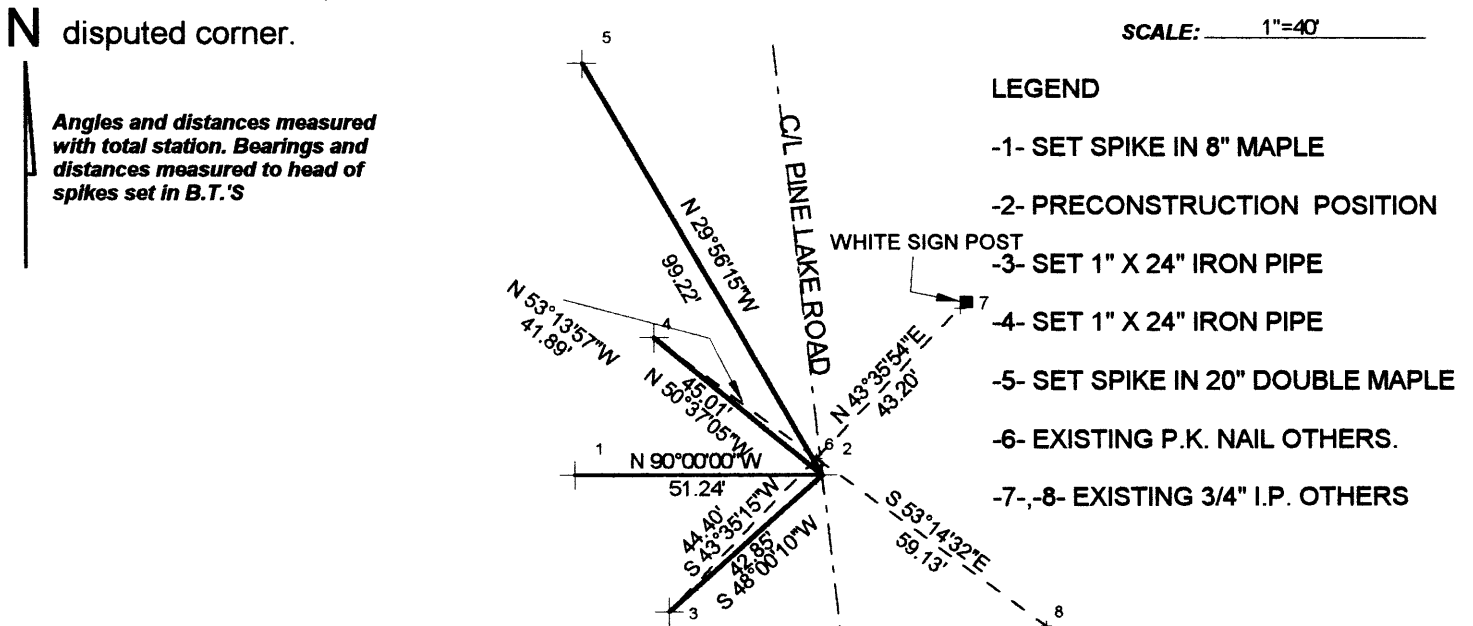
(b) (f) (g) (h) Description of monument found at this corner and if it was accepted, state all evidence (material, testimonial, occupational, plats, records, other monuments) used as a basis for accepting. If not accepted or if nothing was found, state evidence used as basis for establishing location. If reestablished through lost corner proportionate methods, indicate all monuments, distances and directions used to establish. Indicate type of monument found or set and sign post.

See U.S. Land Survey Monument Record form by others for history.

- PRECONSTRUCTION - Found P.K. nail. No record of origin.

- APRIL 2005 POST CONSTRUCTION, KEVIN BIXBY - Found P.K. nail by others that did not match preconstruction ties. Due to no history of origin on preconstruction P.K. nail, left existing P.K. as shown and witnessed below.

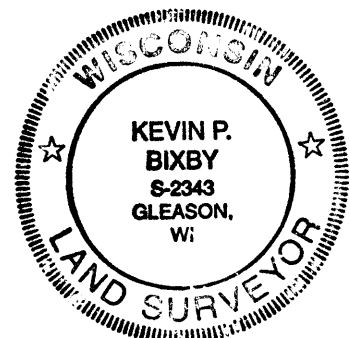
(c) (d) (e) Plan view of corner with ties to at least 4 witness monuments. If in disagreement with previously established corner, show the distances between the two corners and also indicate the ties to the disputed corner.



(i) I, KEVIN P. BIXBY

(type or print name) certify that the corner location on this record was determined by me or under my direction and control and that this U.S. Public Land Survey Monument Record is correct and complete to the best of my knowledge and belief.

Kevin P. Bixby  
 Signature 04/10/05  
 Date



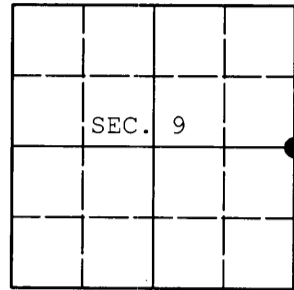
Stamp  
 3809092000

Index No. 6-13

U.S. PUBLIC LAND SURVEY MONUMENT RECORD

Note: This form is intended and designed to fulfill all requirements of Wisconsin Administrative Code, Chapter A-E 7.08 U.S. Public Land Survey Monument Record (3) (a) (b) (c) (d) (e) (f) (g) (h) (i). An additional sheet may be added if necessary to conform with said requirements.

(a) CORNER LOCATION: WISCORS (Oneida County)
1/4 Cor. of Secs. 9 & 10 N: 222,380.44 USft
Township 38 North E: 277,044.87 USft
Range 9 East of the 4th P.M. Datum: NAD 1983(2011)
Town of Sugar Camp County of Oneida



(b) HISTORY OF ORIGINAL CORNER ESTABLISHMENT

Original Surveyor: Original Accessories:
Date of Survey: Commenced:
Completed:

(b) (f) (g) (h) Description of monument found at this corner and if it was accepted, state all evidence (material, testimonial, occupational, plats, records, other monuments) used as a basis for accepting. If not accepted or if nothing was found, state evidence used as basis for establishing location. If re-established through lost corner proportionate methods, indicate all monuments, distances and directions used to establish. Indicate type of monument and sign post found or set.

NOTE: This is a perpetuation of a previous USPLS Monument Record by Michael E. Weber, RLS dated December 15, 2004 and filed in the office of the Oneida County Register of Deeds. A complete history of the corner can be found on the previous monument record. I accept the previous location as a true and faithful perpetuation or reestablishment of the original corner location and further perpetuate it as follows.

May 28, 2014: I found and accepted Weber's monument, a Berntsen Survey Mark nail in the road centerline. Weber's accessories were found in substantial agreement with his previous record and were not remeasured as the sole purpose of this work is to report the coordinates of the corner point.

The coordinates shown were derived from a direct RTN GPS observation referenced to the WISCORS network.

(c) (d) (e) Plan view of corner with ties to at least 4 witness monuments. If in disagreement with previously established corner, show the distances between the two corners and also indicate the ties to the disputed.

REGISTER OF DEEDS OFFICE
ONEIDA COUNTY
FILED

JUL 03 2014

AT O'CLOCK M
KYLE J. FRANSON
REGISTER OF DEEDS

(i) I, Jeffrey W. Austin, Registered Land Surveyor No. S-1885, hereby certify that the corner location on this record was determined by me or under my direction and control and that this U.S. Public Land Survey Monument Record is correct and complete to the best of my knowledge and belief.



Signature

Date

JUNE 28, 2014