

U.S. PUBLIC LAND SURVEY MONUMENT RECORD

Note: This form is intended and designed to fulfill all requirements of Wisconsin Administrative Code, Chapter A-E 7.08 U.S. Public Land Survey Monument Record (3) (a) (b) (c) (d) (e) (f) (g) (h) (i). An additional sheet may be added if necessary to conform with said requirements.

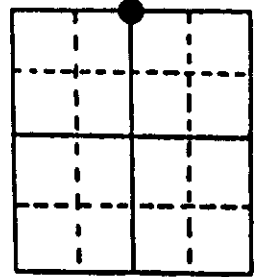
(a) Corner location: Township 38 North Corner: North 1/4 Corner

Section 15 Range 9 East Original Surveyor: William Daugherty

Town/City/Village Sugar Camp

Original B.T.'s: 10" Bw N50°W 17 lks
10" Hem S03°W 19 lks

County Oneida



Original Survey Date: September 1863 ● Location

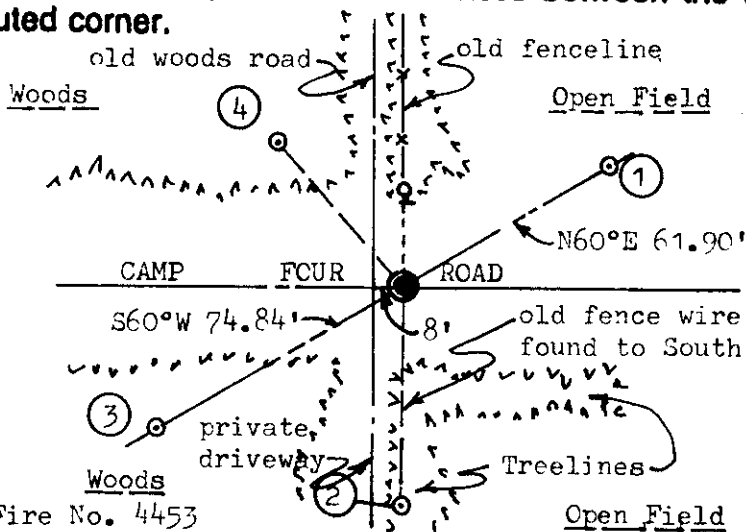
(b) (f) (g) (h) Description of monument found at this corner and if it was accepted, state all evidence (material, testimonial, occupational, plats, records, other monuments) used as a basis for accepting. If not accepted or if nothing was found, state evidence used as basis for establishing location. If reestablished through lost corner proportionate methods, indicate all monuments, distances and directions used to establish. Indicate type of monument found or set and sign post.

Found top of an undisturbed iron shaft 12" below surface of existing newer blacktop roadway surface mat in surface of older roadway bed below, which I accepted at this corner location. All original GLO survey corner evidence is now obliterated due to roadway construction. No other corner evidence was noted by careful inspection of the nearby area. In 1975, Norman Loftus, RLS, noted but did not fully describe the monument at this corner on his Plat of Survey filed as No. R-240, Oneida County records. A total station measurement from the NW corner monument for Section 15 which I previously found and tied, compared within 2.3' of record distance by Loftus in 1975, undoubtedly chained, so I am confident that he used the same corner location, by common report. To aid future corner recovery, I set a 1/4" dia. by 2 1/2" long PK nail in blacktop surfacing 12" North, South, East and West of plumbed-up center of iron shaft found.

This recovery was completed on April 13, 1998 and witnessed by Dawrin Larson, a local area landowner.

NE and SW reference monuments were set on a right line thru corner monument in road.

(c) (d) (e) Plan view of corner with ties to at least 4 witness monuments. If in disagreement with previously established corner, show the distances between the two corners and also indicate the ties to the disputed corner.



Witness Monument Ties:

- ① Standard 2" dia. by 30" long aluminum pipe monument set with stamped Oneida County cap flush with grade.
- ② New BT 8" Sb S01°W 58.00'.
- ③ 1" dia. by 48" long iron pipe set with poly Reference Mark plug in top, 2" above grade.
- ④ New 14" Sb N42°W 49.55'.

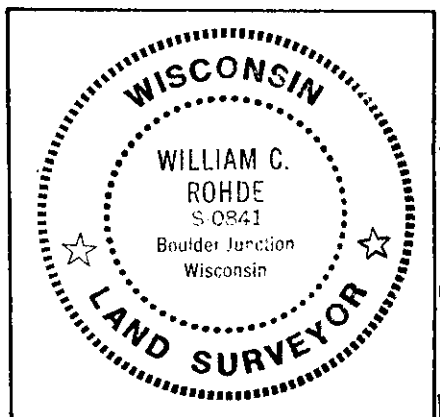
Note: Standard white poly 'T' corner marker post set 21.2' North of corner in road.

Scale: 1" = 50'

Unless otherwise indicated, all BT witness monument ties are to a 1/4" dia. by 2.5" long PK nail with 1.25" dia. steel washer set in unblazed right face bark; and a PK nail with 2" dia. steel washer stamped BT also set in unblazed front face bark of each BT at DBH. All previous corner recovery notes from Wisconsin DNR and/or Oneida County survey records.

(i) I, William C. Rohde, RLS 841
(type or print name) certify that the corner location on this record was determined by me or under my direction and control and that this U.S. Public Land Survey Monument Record is correct and complete to the best of my knowledge and belief.

William C. Rohde Signature April 14, 1998 Date



Index No. J-15
3809100020

U.S. PUBLIC LAND SURVEY MONUMENT RECORD

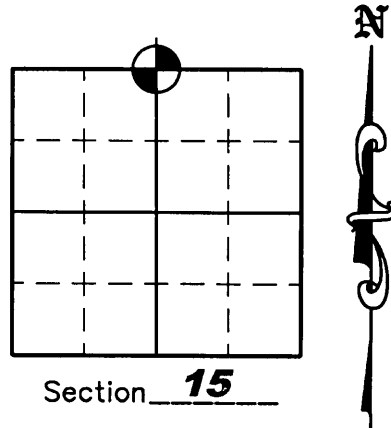
NOTE: This form is intended and designed to fulfill all requirements of Wisconsin Administrative Code, Chapter A-E 7 .08 U.S. Public Land Survey Monument Record (3)(a)(b)(c)(d)(e)(f)(g)(h)(i). An additional sheet may be added if necessary to conform with said requirements.

(a) Corner location: Township 38 North

Range 09 East

Town of SUGAR CAMP

County of ONEIDA



(b)(f)(g)(h) Description of monument found at this corner and if it was accepted, state all evidence (material, testimonial, occupation, plats, records, other monuments) used as a basis for accepting. If not accepted or if nothing was found, state evidence used as a basis for establishing location. If reestablished through lost corner proportionate methods, indicate all monuments, distances and directions used to establish. Indicate type of monument found or set and sign post.

April 13, 1998 – William C. Rohde found an iron shaft 12" below surface of existing road and set 1 P.K. Nail 12" North, South, East and West of corner – See U.S.P.L.S Monument Record dated April 14, 1998

July 29, 2004 – Due to road construction Nicolet Surveyors, Inc. was contacted by Oneida County Land Information Office to preserve the location of this survey marker. Jonathan W. Dulin found a P.K. Nail approximately 1' North of the centerline of Camp Four Road. We also found a P.K. Nail 1 foot North, South, East and West of the Corner and 3 other reference monuments. We witnessed the corner as shown below.

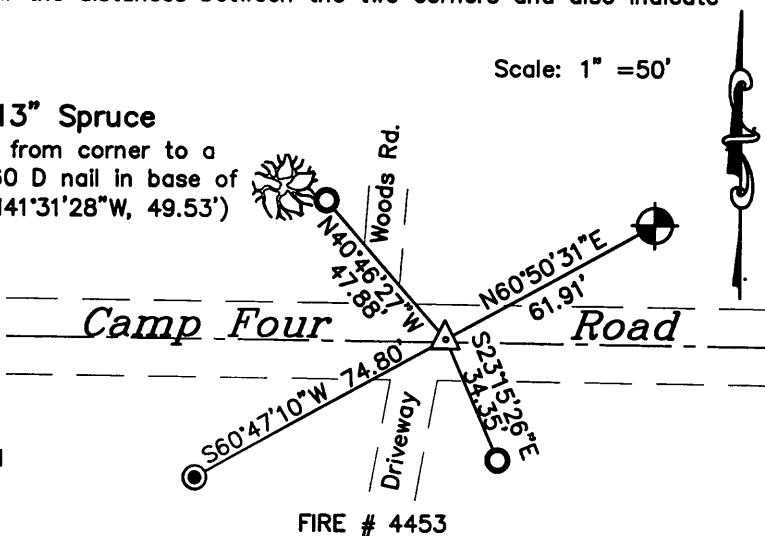
August 12, 2005 – After road construction we reset a P.K. Nail at this location.

(c)(d)(e) Plan view of corner with ties to at least 4 witness monuments. If in disagreement with previously established corner, show the distances between the two corners and also indicate the ties to the disputed corner.

LEGEND

- △ P.K. Nail Set
- 3/4" x 24" Iron rebar Set Weighing 1.50 lbs/lin. ft.
- 1" Iron Pipe With Cap Found
- ⊕ 2" Aluminum Monument Found

13" Spruce
(Dist. from corner to a found .60 D nail in base of tree, N41°31'28"W, 49.53')



(i) I, Jonathan W. Dulin, certify that the corner location on this record was determined by me under my direction and control and that this U.S. Public Land Survey Monument is correct and complete to the best of my knowledge and belief.

Signature [Signature] Date 10-8-2007

WISCONSIN
JONATHAN W. DULIN
S-2754
Rhineland
WISCONSIN
LAND SURVEYOR

REGISTER OF DEEDS OFFICE
ONEIDA COUNTY, WIS.

FILED
OCT 22 2007

At _____ O'Clock _____ M
THOMAS H. LEIGHTON
REGISTER OF DEEDS

3809100020

Index No. J-15