

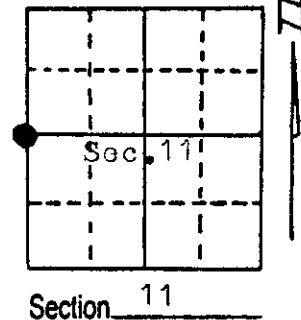
U.S. PUBLIC LAND SURVEY MONUMENT RECORD

Note: This form is intended and designed to fulfill all requirements of Wisconsin Administrative Code, Chapter A-E 5.02, U.S. Public Land Survey Monument Record (3) (a) (b) (c) (d) (e) (f) (g) (h) (i). An additional sheet may be added if necessary to conform with said requirements.

(a) Corner location: Township 38 North
 Range 9 East/West

Town/City/Village Sugar Camp

County Oneida

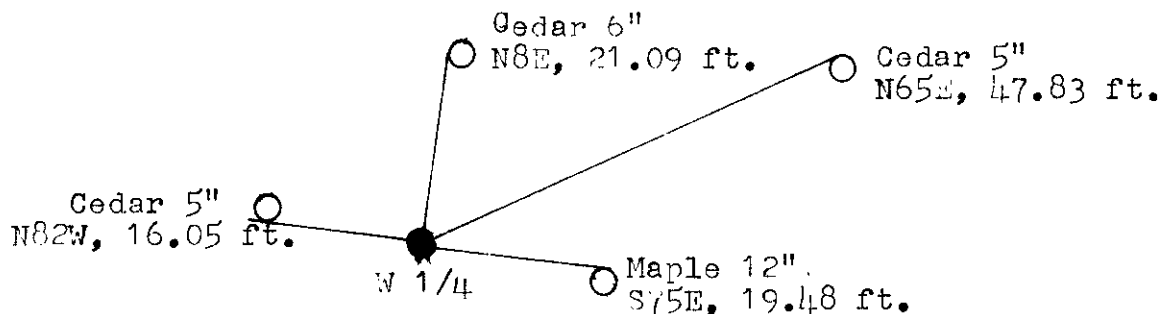


Section 11

(b) (f) (g) (h) Description of monument found at this corner and if it was accepted, state all evidence (material, testimonial, occupational, plats, records, other monuments) used as a basis for accepting. If not accepted or if nothing was found, state evidence used as basis for establishing location. If reestablished through lost corner proportionate methods, indicate all monuments, distances and directions used to establish.

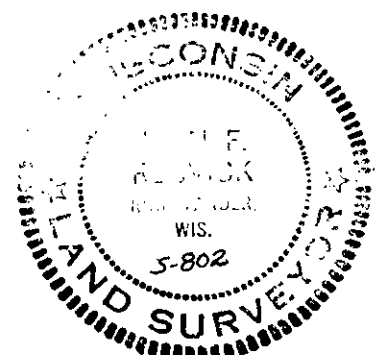
William Daugherty surveyed in 1863. North between 10 & 11 40 Ch. set post, Hem.10" S31 E, 27 lks, Spruce 10" N70W, 16 lks.
 B.F. Dorr in 1893. North between 10 & 11 38.09 Ch. Proportional measure, set post, Hem.10" N74½E, 21 lks, Hem.8 S50W, 4½ lks. West to lake 8.80 Ch. North 19.045Ch. set N 1/16 post, Cedar 10", N60W, 12 lks.
 D.H. Vaughan in 1908. North from SW cor. 37.91 Ch. found Dorr's W¼ post. East from W¼ 19.755 Ch. set C-W 1/16 post. Spruce 4" N57E, 29 lks. Spruce 4" S84W, 39 lks.
 L.J. Schmit in 1973 set W¼ corner by Proportional methods. (no evidence found) I found no evidence of W¼ corner other than fence lines and old road and Dorr's N 1/16 and Vaughan's C-W 1/16 and the lake west.
 I established the W¼ corner by taking the proportional distance between the section corners; Thence moving it west to fence line south; Thence south on fence line 6.5 ft. to fence lines East and West. See sketch on back.
 W¼ cor. South to SW cor. 2503.75 ft. (Vaughan's 2502.06 ft.)
 W¼ cor. North to N 1/16 1259.45 ft. (Dorr's 1256.97 ft.) West to lake 570 ft.
 W¼ cor. East to C-W 1/16 1303.78 ft. (Vaughan's 1303.83 ft.)

(c) (d) (e) Plan view of corner with ties to at least 4 witness monuments. If in disagreement with previously established corner, show the distances between the two corners and also indicate the ties to the disputed corner. Set Oneida County Monument 2" below surface of old road way in curve and in line with fences South, East and West. Set White post S 45 E, 7 feet. Bearing Trees blazed and scribed. Distances to 8 penny galvanized nail in side of tree as indicated on sketch. Hand compass bearings to trees.

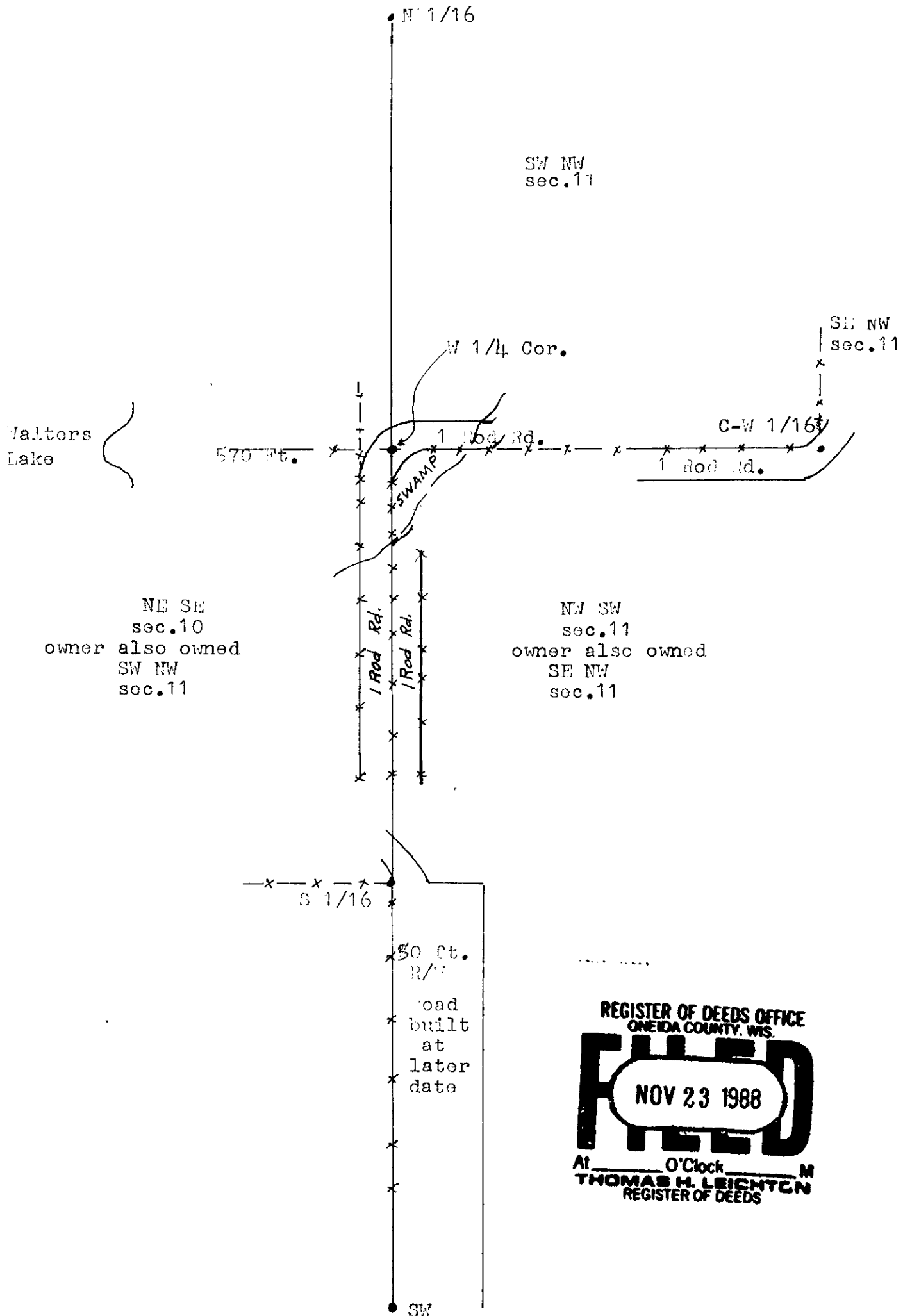


(i) I, Jean F, Resvick
 (type or print name) certify that the corner location on this record was determined by me or under my direction and control and that this U.S. Public Land Survey Monument Record is correct and complete to the best of my knowledge and belief.

Jean F. Resvick Signature
 Nov. 21, 1988 Date



Index No. G-17



REGISTER OF DEEDS OFFICE
 ONEIDA COUNTY, WIS.
FILED
 NOV 23 1988
 At _____ O'Clock _____ M
 THOMAS H. LEIGHTON
 REGISTER OF DEEDS