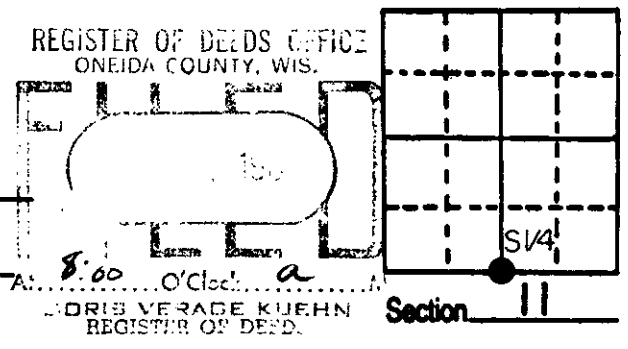


U.S. PUBLIC LAND SURVEY MONUMENT RECORD

Note: This form is intended and designed to fulfill all requirements of Wisconsin Administrative Code, Chapter A-E 5.02, U.S. Public Land Survey Monument Record (3) (a) (b) (c) (d) (e) (f) (g) (h) (i). An additional sheet may be added if necessary to conform with said requirements.

(a) Corner location: Township 38 North
 Range 9 East ~~West~~
 Town/City/Village Sugar Camp
 County Oneida

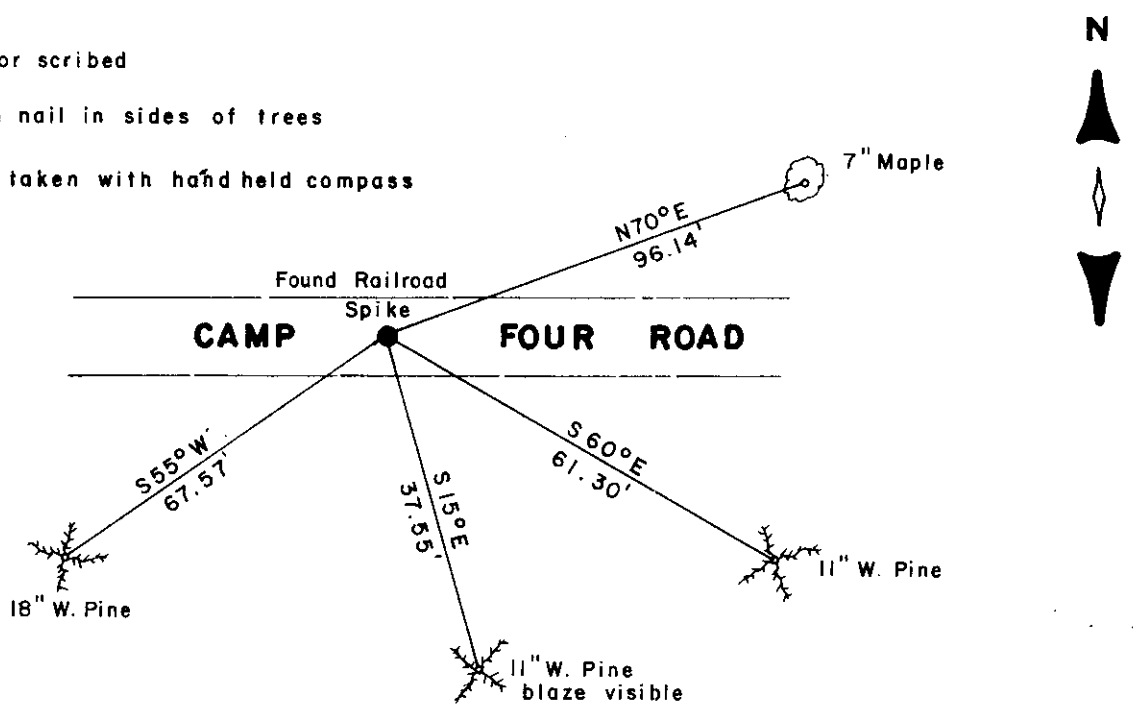


(b) (f) (g) (h) Description of monument found at this corner and if it was accepted, state all evidence (material, testimonial, occupational, plats, records, other monuments) used as a basis for accepting. If not accepted or if nothing was found, state evidence used as basis for establishing location. If reestablished through lost corner proportionate methods, indicate all monuments, distances and directions used to establish.

- 1863 Daugherty ran east between 11 & 14, 40.00 set post. BTs; Birch 8,N 78° E 12, Hemlock 8,S 74° W 15
- 1893 Dorr at corner found no BTs.
- 1908 D.H.Vaughn set corner by proportionate measurment.
- 1911 D.H.Vaughn reset corner from Dorr survey, no BTs.
- 1966 R.E.Bandow at corner, no BTs.
- 1986 I found a railroad spike at the corner location and witnessed it as shown below.

(c) (d) (e) Plan view of corner with ties to at least 4 witness monuments. If in disagreement with previously established corner, show the distances between the two corners and also indicate the ties to the disputed corner.

- BTs. are not blazed or scribed
- Distances to 6" iron nail in sides of trees
- Bearings magnetic taken with hand held compass
- No scale



(i) I, WILLIAM E. BANDOW R.L.S. 1182
 (type or print name) certify that the corner location on this record was determined by me or under my direction and control and that this U.S. Public Land Survey Monument Record is correct and complete to the best of my knowledge and belief.

William E. Bandow 10-3-86
 Signature Date



GENISOT & ASSOCIATES INC.
 1512 EAGLE ST., RHINE, WI.

Index No. 7-19

3809110020

U.S. PUBLIC LAND SURVEY MONUMENT RECORD

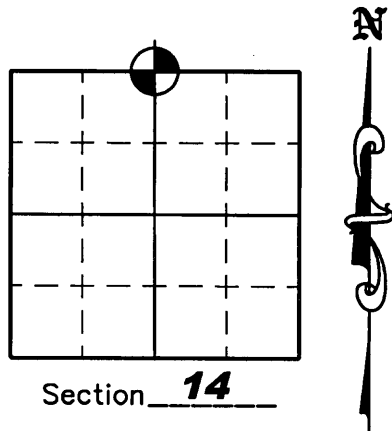
NOTE: This form is intended and designed to fulfill all requirements of Wisconsin Administrative Code, Chapter A-E 7 .08 U.S. Public Land Survey Monument Record (3)(a)(b)(c)(d)(e)(f)(g)(h)(i). An additional sheet may be added if necessary to conform with said requirements.

(a) Corner location: Township 38 North

Range 09 East

Town of SUGAR CAMP

County of ONEIDA



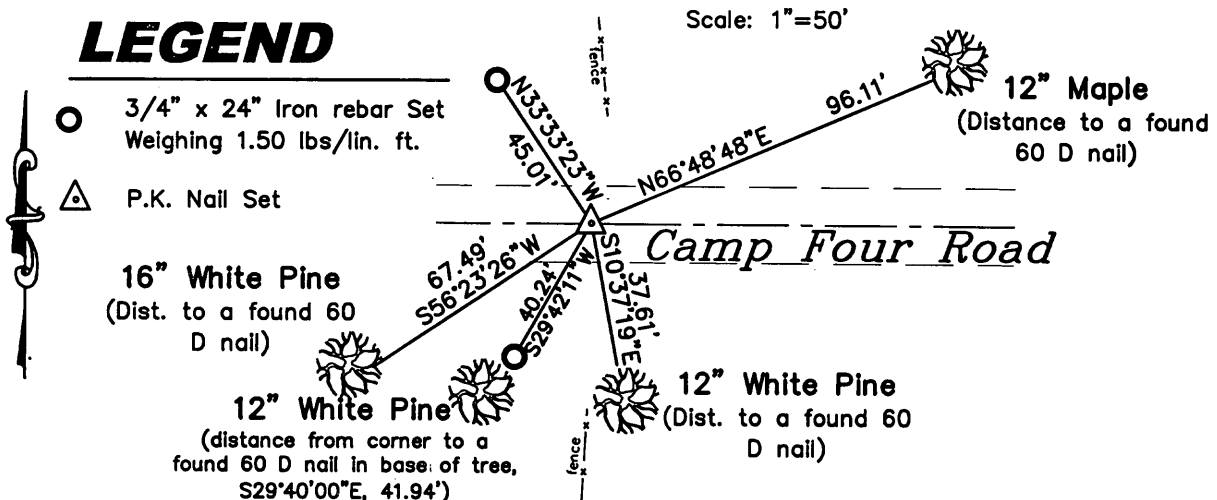
(b)(f)(g)(h) Description of monument found at this corner and if it was accepted, state all evidence (material, testimonial, occupation, plats, records, other monuments) used as a basis for accepting. If not accepted or if nothing was found, state evidence used as a basis for establishing location. If reestablished through lost corner proportionate methods, indicate all monuments, distances and directions used to establish. Indicate type of monument found or set and sign post.

1986 - William E. Bandow found a Railroad Spike at the corner location - See U.S.P.L.S Monument Record dated October 3, 1986.

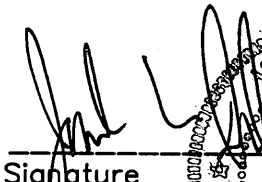
July 29, 2004 - Due to road construction Nicolet Surveyors, Inc. was contacted by Oneida County Land Information Office to preserve the location of this survey marker. Jonathan W. Dulin found a Railroad Spike in the centerline of Camp Four Road along with 4 bearing trees. We witnessed the corner as shown below.

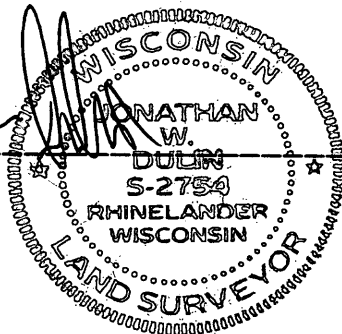
August 12, 2005 - After road construction we reset a P.K. Nail at this location.

(c)(d)(e) Plan view of corner with ties to at least 4 witness monuments. If in disagreement with previously established corner, show the distances between the two corners and also indicate the ties to the disputed corner.



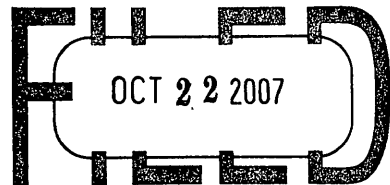
(i) I, Jonathan W. Dulin, certify that the corner location on this record was determined by me under my direction and control and that this U.S. Public Land Survey Monument is correct and complete to the best of my knowledge and belief.

Signature 



Date 10-8-2007

REGISTER OF DEEDS OFFICE
ONEIDA COUNTY, WIS.



At _____ O'Clock _____ M
THOMAS H. LEIGHTON
REGISTER OF DEEDS

3809110020

Index No. J-19