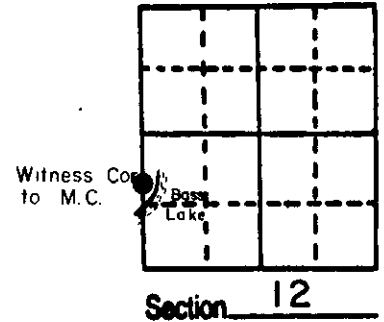


U.S. PUBLIC LAND SURVEY MONUMENT RECORD

Note: This form is intended and designed to fulfill all requirements of Wisconsin Administrative Code, Chapter A-E 5.02, U.S. Public Land Survey Monument Record (3) (a) (b) (c) (d) (e) (f) (g) (h) (i). An additional sheet may be added if necessary to conform with said requirements.

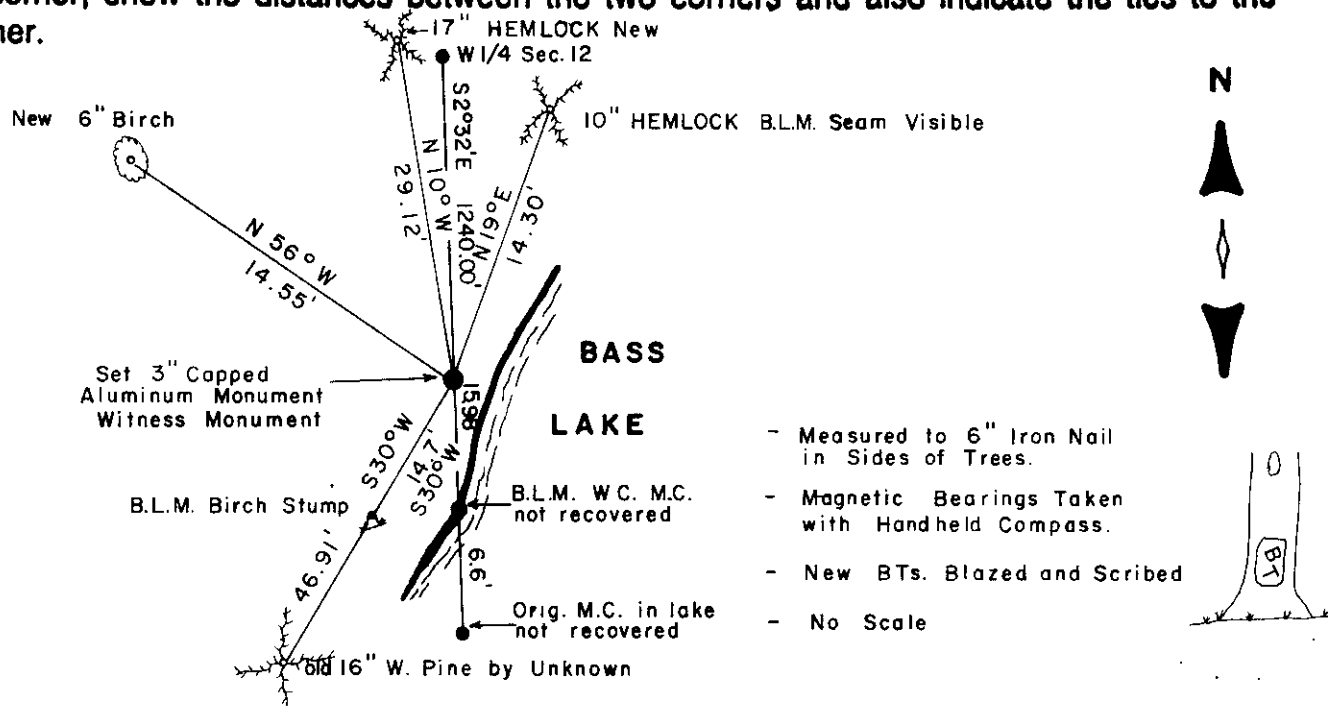
(a) Corner location: Township 38 North
 Range 9 East/West
 Town/City/Village Sugar Camp
 County Oneida



(b) (f) (g) (h) Description of monument found at this corner and if it was accepted, state all evidence (material, testimonial, occupational, plats, records, other monuments) used as a basis for accepting. If not accepted or if nothing was found, state evidence used as basis for establishing location. If reestablished through lost corner proportionate methods, indicate all monuments, distances and directions used to establish.

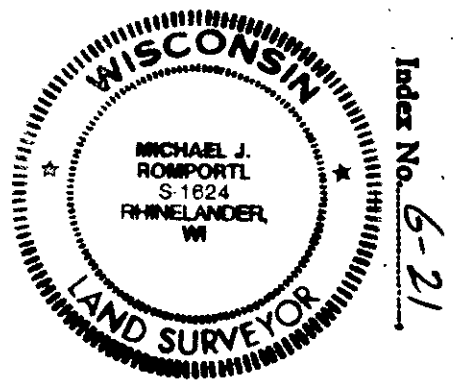
- 1863- Original corner by W. Dauherty, N. between Sec. 11 & 12 over lake set meander post. BTs; 8" Hemlock, N 31° E, 28 lks., 10" Birch N57°W 10 lks.
- 1956- B.L.M. surveyor Hugh Crawford states; the meander cor. of secs. 11 & 12. on N shore of Bass Lake, is marked by an iron pipe, 3" diam., protruding 16" above the ground, pipe sets in water near N edge, impractical to establish a monument. Apparently set by an Oneida Co. surveyor about 1900. At a point N 2° 32' W, 10 lks. dist. Set a brass tablet 3 1/2" diam. 3" stem in concrete form, 6" diam., 24" long, 20" in the ground. " from which, a Hemlock 10", bears N 9° E 43 lks., a birch 8" bears N 75 1/2° W, 14 lks.
- 1986- WE searched for the G.L.O. M.C. from the B.L.M. BTs. and distance from the W 1/4 of 12. We were unable to find the monument. We established a witness monument on high land as shown below.

(c) (d) (e) Plan view of corner with ties to at least 4 witness monuments. If in disagreement with previously established corner, show the distances between the two corners and also indicate the ties to the disputed corner.



(i) I, MICHAEL J. ROMPORTL R.L.S. 1624
 (type or print name) certify that the corner location on this record was determined by me or under my direction and control and that this U.S. Public Land Survey Monument Record is correct and complete to the best of my knowledge and belief.

Michael J. Romportl 4-1-86
 Signature Date
 GENISOT & ASSOCIATES INC.
 1512 EAGLE ST., RHINE, WI.



380911300