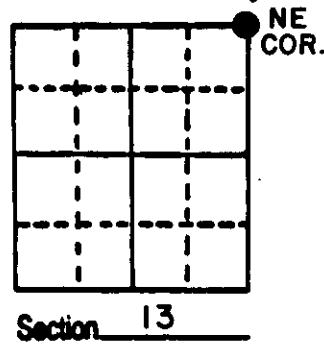


# U.S. PUBLIC LAND SURVEY MONUMENT RECORD

**Note:** This form is intended and designed to fulfill all requirements of Wisconsin Administrative Code, Chapter A-E 5.02, U.S. Public Land Survey Monument Record (3) (a) (b) (c) (d) (e) (f) (g) (h) (i). An additional sheet may be added if necessary to conform with said requirements.

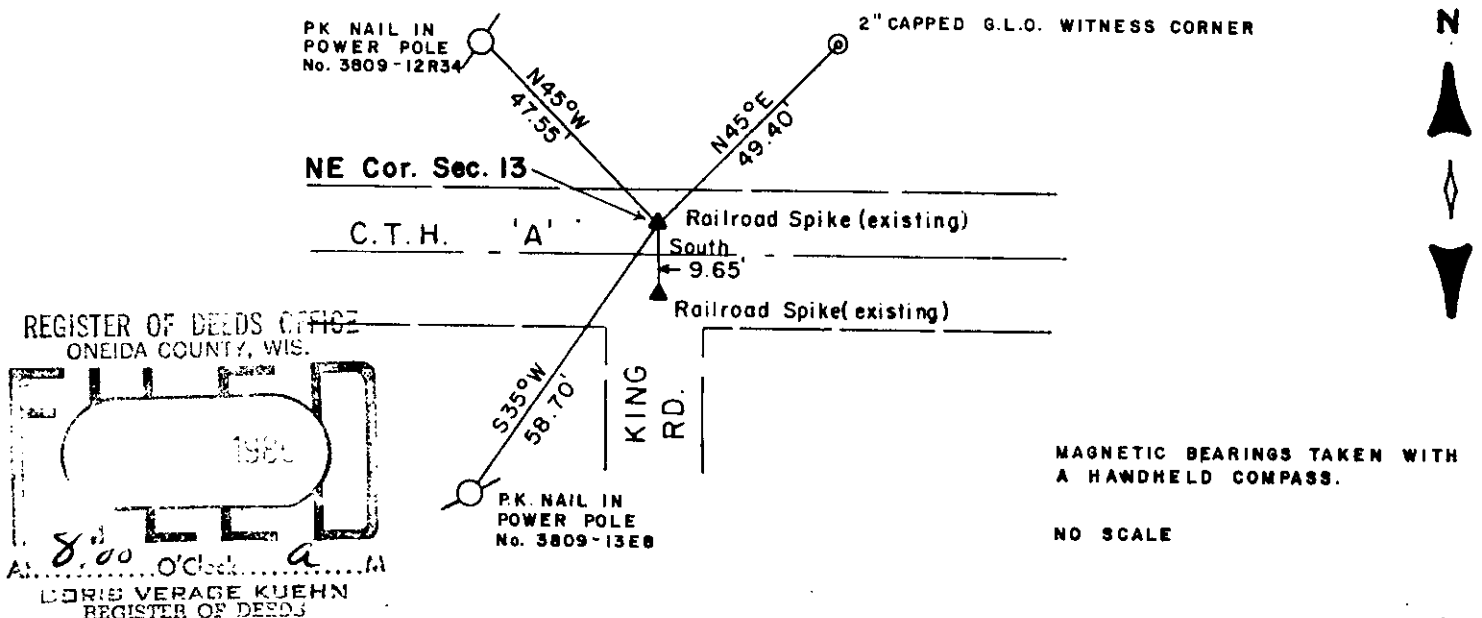
(a) Corner location: Township 38 North  
 Range 9 East ~~West~~  
 Town/City/Village SUGAR CAMP  
 County ONEIDA



(b) (f) (g) (h) Description of monument found at this corner and if it was accepted, state all evidence (material, testimonial, occupational, plats, records, other monuments) used as a basis for accepting. If not accepted or if nothing was found, state evidence used as basis for establishing location. If reestablished through lost corner proportionate methods, indicate all monuments, distances and directions used to establish.

- 1859- Fellows set original corner. BT's Hem 20" S50W 39, Sugar 8" N52W 25, Sugar 8" N18E 27, Linden 20" S35E 9.
- 1909- D. H. Vaughan found corner and original stumps.
- 1956- GLO set corner and witnesses.
- 1986- I found a railroad spike and witnessed it as shown below.

(c) (d) (e) Plan view of corner with ties to at least 4 witness monuments. If in disagreement with previously established corner, show the distances between the two corners and also indicate the ties to the disputed corner.



REGISTER OF DEEDS OFFICE  
 ONEIDA COUNTY, WIS.  
 1986  
 At 8:00 O'clock  
 LORIS VERAGE KUEHN  
 REGISTER OF DEEDS

MAGNETIC BEARINGS TAKEN WITH A HANDHELD COMPASS.  
 NO SCALE

(i) I, WILLIAM E. BANDOW R.L.S. 1182  
 (type or print name) certify that the corner location on this record was determined by me or under my direction and control and that this U.S. Public Land Survey Monument Record is correct and complete to the best of my knowledge and belief.  
*William E. Bandow* 10-3-86  
 Signature Date



Index No. 5-25

GENISOT & ASSOCIATES INC.  
 1512 EAGLE ST., RHINE, WI.

3809120000

# U.S. PUBLIC LAND SURVEY MONUMENT RECORD

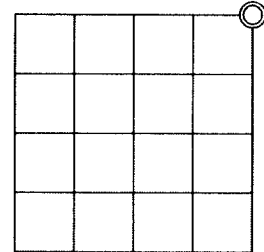
Note: This form is intended and designed to fulfill all requirements of Wisconsin Administrative Code, Chapter A-E 7.08 U.S. Public Land Survey Monument Record (3)(a)(b)(c)(d)(e)(f)(g)(h)(i). An additional sheet may be added to if necessary to conform with said requirements.

(a) Corner Location:

Northeast Corner,  
Section 13,  
Township 38 North,  
Range 9 East,  
Town of Sugar Camp,  
Oneida County,  
Wisconsin

June 2, 2017 Observation - MSA  
MAG NAIL  
N 220,239.997  
E 292,421.978  
Oneida County Coordinate System NAD83(91)

November, 1999 Observation - Aero-Metric  
P.K. Nail  
N 220,239.90  
E 292,421.87  
Oneida County Coordinate System NAD83(91)



Section 13

(b)(f)(g)(h) Description of monument found at this corner and if it was accepted, state all evidence (material, testimonial, occupational, plats, records, other monuments) used as a basis for accepting. If not accepted or if nothing was found, state evidence used as basis for establishing location. If reestablishment through lost corner proportionate methods, indicate all monuments, distances and directions used to establish. Indicate type of monument found or set and sign post.

1859 - Fellows set original corner. BT's Hem 20" S50W 39, Sugar 8" N52W 25, Sugar 8" N52W 25, Sugar 8" N18E 27, Linden 20" S35E 9.

1909 - D.H. Vaughan found corner and original stumps.

1956 - GLO set corner and witnesses.

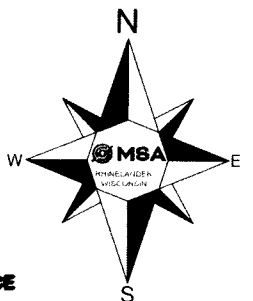
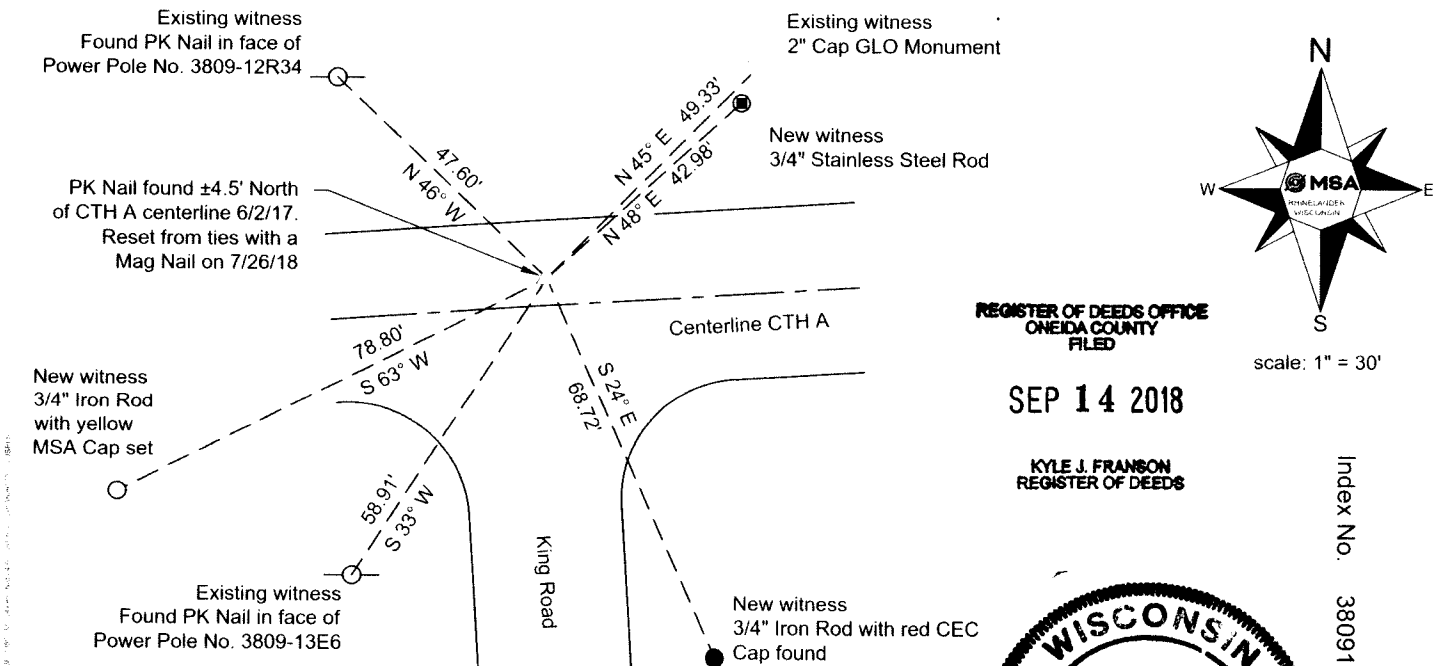
1986 - USPLS Monument Record Index Number J-25 - Found Railroad spike witnessed by William Bandow.

06/02/2017 - I found a P.K. Nail ±4.5 feet north of the Centerline of County Trunk Highway A, and measured witnesses as shown below.

07/26/2018 - I found the Mag Nail to be Obliterated and reestablished its position from witnesses.

Note: This corner was located prior to County Trunk Highway A improvements. This monument and USPLS monument record is a perpetuation of a found monument of record.

(c)(d)(e) Plan view of corner with ties to at least 4 witness monuments. If in disagreement with previously established corner, show the distances between the two corners and also indicate the ties to the disputed corner.



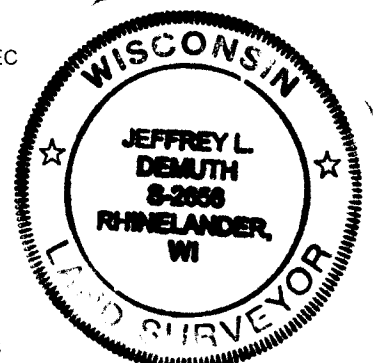
scale: 1" = 30'

REGISTER OF DEEDS OFFICE  
ONEIDA COUNTY  
FILED

SEP 14 2018

KYLE J. FRANSON  
REGISTER OF DEEDS

Index No. 3809120000



J-25

(i) I, Jeffrey L. DeMuth, Professional Land Surveyor #S-2656, hereby certify that the corner location on this record was perpetuated by me or under my direction and control and that this U.S. Public Land Survey Monument Record is correct and complete to the best of my knowledge and belief.

Signature

Date 09/11/2018