

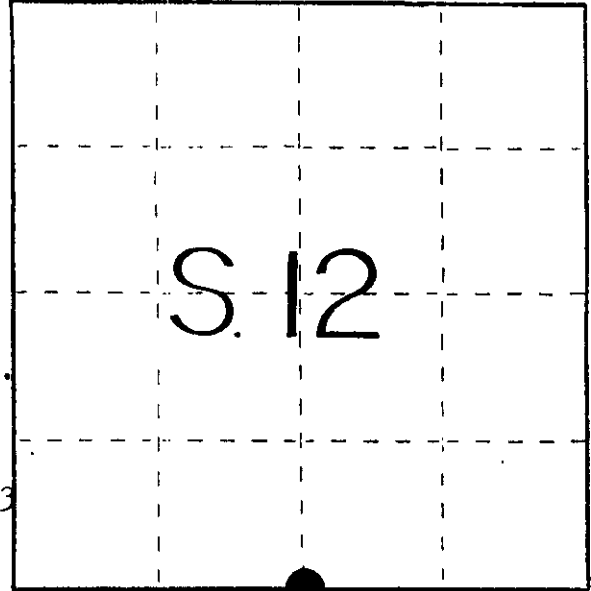
# U. S. PUBLIC LAND SURVEY MONUMENT RECORD

**INSTRUCTIONS:** This record shall show the location of the corner and shall include all of the following nine elements (a through i).

(a) Identify the corner by reference to the U.S. public land survey system.

● = Corner monument restored.

**S. 1/4 COR., SECTION 12,  
TOWNSHIP 38 NORTH,  
RANGE 9 EAST,  
ONEIDA COUNTY, WIS.**



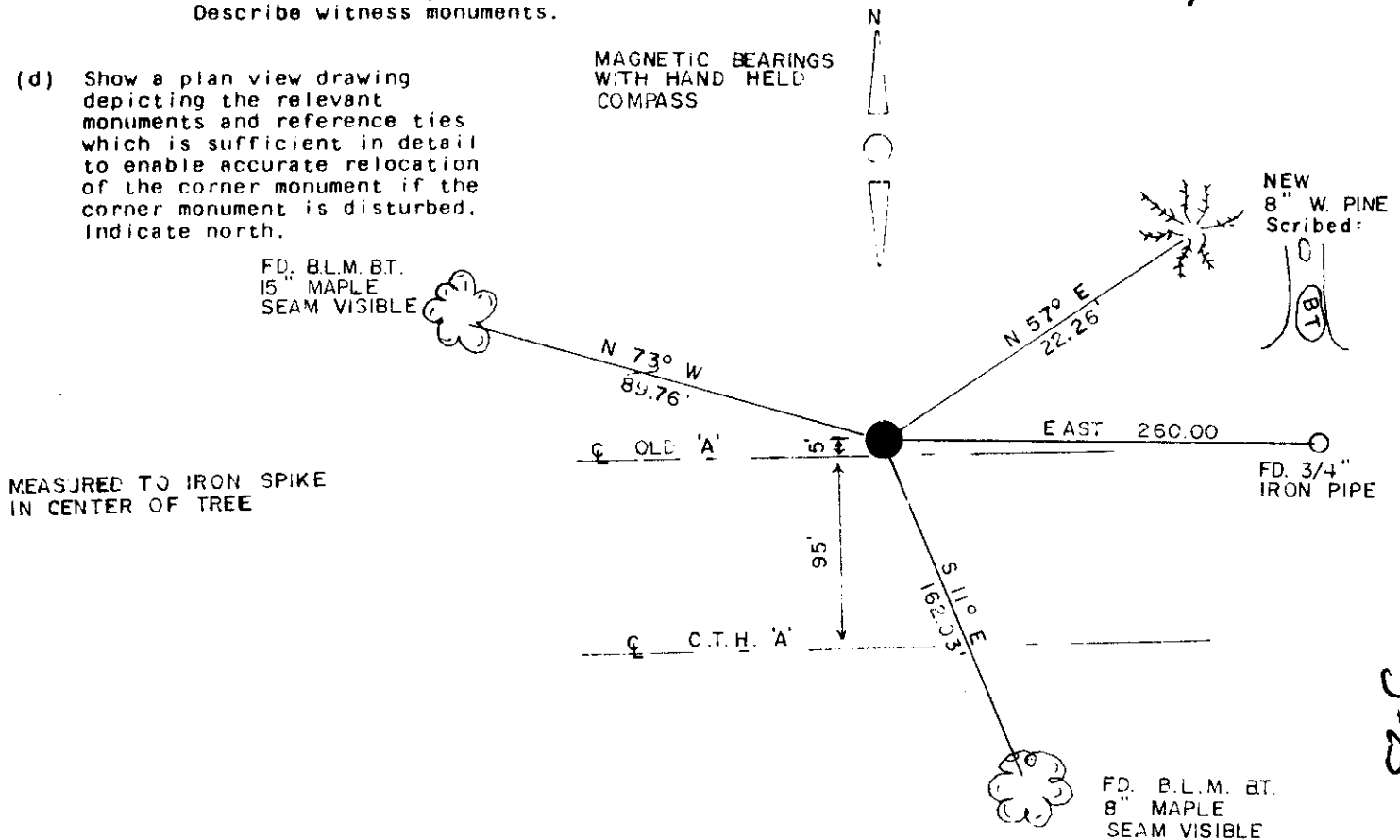
- 1863 W. E. Dauugherty set orig. corner
- 1895 B.F. Dorr recovered corner 40.75 ch. from S.E. corner
- 1911 D.H. Vaughan ran line N from 1/4 to Three Lakes Rd.
- 1908 D.H. VAughan west bet. 12 & 13 40.83 recovered corner
- 1956 Hugh Crawford a surveyor with the Burea of Land Management executed a dependent resurvey of Section 12 and states: the 1/4 cor. of Sec. 12 & 13 is marked by a 1" iron pipe in old 'A', a county corner. He set a brass capped concrete monument. B.T.s Maple 10" N 73 W 136lks.; Maple 6" S 10-56 E 245 1/2 lks. set iron pipe south & alongside mon.

(b) Describe any record evidence, monument evidence, occupational evidence, testimonial evidence or any other material evidence you considered, and whether the monument was found or placed.

At this corner I found the concrete marker with the top sheared off and the two B.L.M. bearing trees. I witnessed the corner as shown and set a iron pipe along side the corner.

(c) In the plan view drawing below, provide reference ties to at least 4 witness monuments, or, if the location is within a municipality, to at least 2 witness monuments. (Witness monuments shall be made of concrete, natural stone, iron or other equally durable material.) Describe witness monuments.

(d) Show a plan view drawing depicting the relevant monuments and reference ties which is sufficient in detail to enable accurate relocation of the corner monument if the corner monument is disturbed. Indicate north.



J-23

(e) Describe any material discrepancy between the location of the corner as restored or reestablished and the location of that corner as previously restored or reestablished by distance and direction. Show the discrepancy on the plan view drawing under (d), above. Show the distances between the corner as previously restored or reestablished and (1) the corner as restored or reestablished, and (2) to at least 2 of the witness monuments shown on the drawing in (d), above.

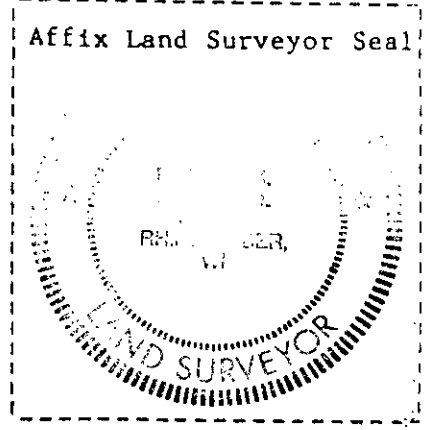
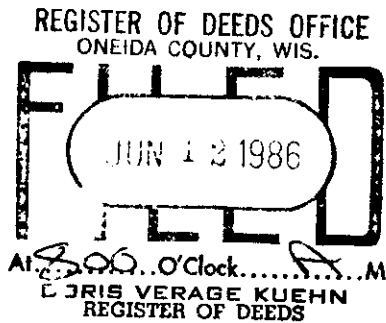
found none

(f) Was the corner restored through acceptance of (1) an obliterated evidence location, or, (2) a found perpetuated location?

a found perpetuated location

(g&h) Was the corner reestablished through lost corner proportionate methods? If so, show the method, including the directions and distances to other public land survey corners used as evidence or used for proportioning in determining the corner location?

n/a



(i) I, Michael J. Romportl  
(type or print name) certify that the corner location shown on this record was determined by me or under my direction and control and that this U.S. Public Land Survey Monument Record is correct and complete to the best of my knowledge and belief.

Michael J. Romportl May 14, 1984  
Signature Date  
Michael J. Romportl  
Genisot & Associates, Inc.  
Rhineland, Wis. 54501

# U.S. PUBLIC LAND SURVEY MONUMENT RECORD

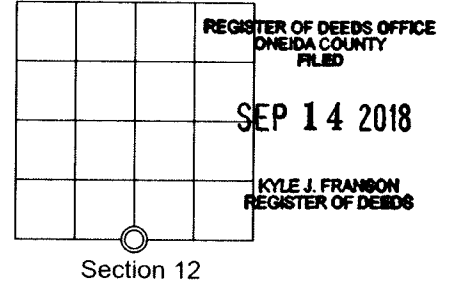
Note: This form is intended and designed to fulfill all requirements of Wisconsin Administrative Code, Chapter A-E 7.08 U.S. Public Land Survey Monument Record (3)(a)(b)(c)(d)(e)(f)(g)(h)(i). An additional sheet may be added to if necessary to conform with said requirements.

(a) Corner Location:

South 1/4 Corner,  
Section 12,  
Township 38 North,  
Range 9 East,  
Town of Sugar Camp,  
Oneida County,  
Wisconsin

June 2, 2017 Observation - MSA  
MAG NAIL  
N 220148.921  
E 289741.275  
Oneida County Coordinate System NAD83(91)

November, 1999 Observation - Aero-Metric  
Concrete Monument  
N 220,148.99  
E 289,741.00  
Oneida County Coordinate System NAD83(91)

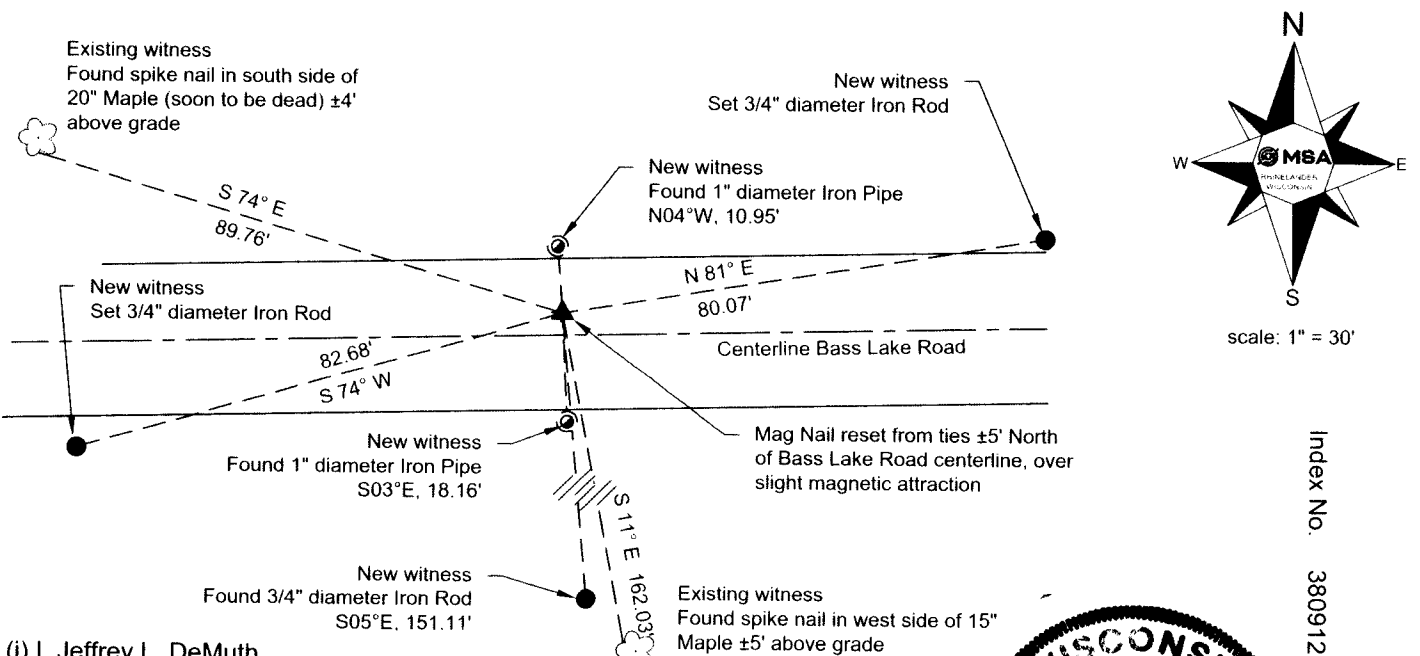


(b)(f)(g)(h) Description of monument found at this corner and if it was accepted, state all evidence (material, testimonial, occupational, plats, records, other monuments) used as a basis for accepting. If not accepted or if nothing was found, state evidence used as basis for establishing location. If reestablishment through lost corner proportionate methods, indicate all monuments, distances and directions used to establish. Indicate type of monument found or set and sign post.

- 1863 - W.E. Daugherty set original corner
- 1895 - B.F. Dorr recovered corner 40.75 chains from S.E. Corner
- 1908 - D.H. Vaughan west between 12 & 13-40.83 recovered corner
- 1911 - D.H. Vaughan ran line N from 1/4 to Three Lakes Road
- 1956 - Hugh Crawford -surveyor with BLM executed a dependant resurvey and set a brass capped concrete monument with a 1" iron pipe along side.
- 1984 - USPLS Monument Record Index Number J-23 - M. Romportl found the concrete marker with top sheered off and 2 BLM monuments
- 6/26/2017 - I found a magnetic attraction beneath the asphalt surface of Bass Lake Road. The attraction fit the distances established by the BLM in 1956 and verified by Romportl in 1984.
- 7/26/2018 - I accepted this position as the location of the 1/4 corner, set a MAG NAIL from existing witnesses, and perpetuated it as shown below.

Note: This corner was not found prior to County Trunk Highway A improvements. This monument and USPLS monument record is a perpetuation of a found monument of record.

(c)(d)(e) Plan view of corner with ties to at least 4 witness monuments. If in disagreement with previously established corner, show the distances between the two corners and also indicate the ties to the disputed corner.

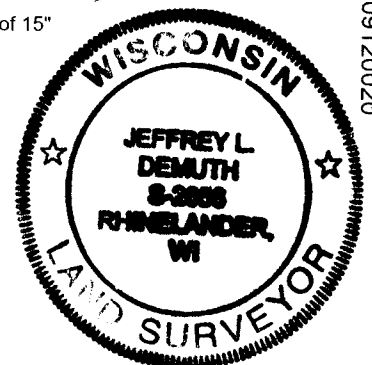


(i) I, Jeffrey L. DeMuth, Professional Land Surveyor #S-2656, hereby certify that the corner location of this record was perpetuated by me or under my direction and control and that this U.S. Public Land Survey Monument Record is correct and complete to the best of my knowledge and belief.

Signature

Date

09/11/2018



Index No. 3809120020

J-23