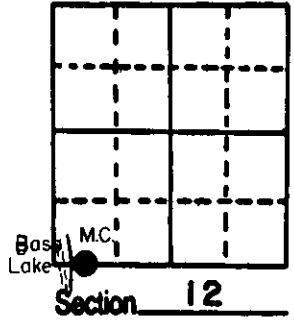


U.S. PUBLIC LAND SURVEY MONUMENT RECORD

Note: This form is intended and designed to fulfill all requirements of Wisconsin Administrative Code, Chapter A-E 5.02, U.S. Public Land Survey Monument Record (3) (a) (b) (c) (d) (e) (f) (g) (h) (i). An additional sheet may be added if necessary to conform with said requirements.

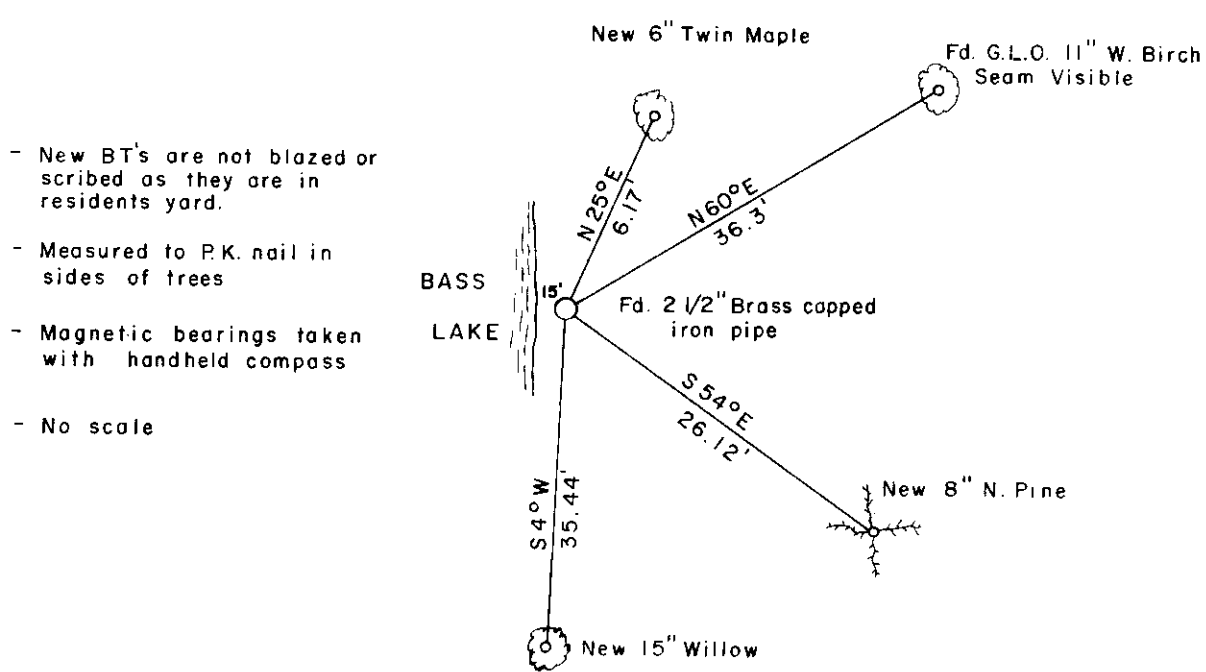
(a) Corner location: Township 38 North
 Range 9 East/West
 Town ~~City/Village~~ Sugar Camp
 County Oneida



(b) (f) (g) (h) Description of monument found at this corner and if it was accepted, state all evidence (material, testimonial, occupational, plats, records, other monuments) used as a basis for accepting. If not accepted or if nothing was found, state evidence used as basis for establishing location. If reestablished through lost corner proportionate methods, indicate all monuments, distances and directions used to establish.

- 1863- Daugherty ran west on true line between 12 & 13 63.14 ch. to lake and set Meander Post. BTs: Birch 10", S 29° E 13 lks., Spruce 8", N 75° E 15 lks.
- 1956- B.L.M. surveyor, Hugh Crawford found a 1" iron pipe at meander corner on the east shore of Bass Lake, which he said was reestablished by an Oneida Co. Surveyor around 1900, he replaced it with a 2 1/2" iron Post with a brass cap. BTs: 10" Birch, N 60° 15' E 55 lks., 12" Birch S 40° W 9 lks., he set an iron pipe east and alongside the new monument.
- 1986- We found B.L.M. brass capped iron pipe and witnessed it as shown below.

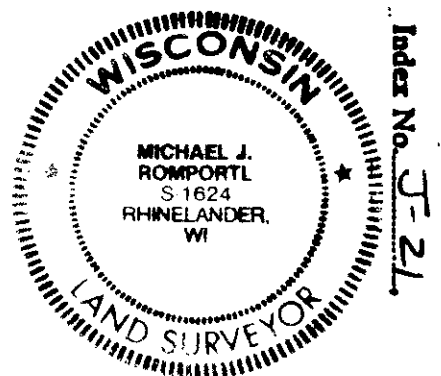
(c) (d) (e) Plan view of corner with ties to at least 4 witness monuments. If in disagreement with previously established corner, show the distances between the two corners and also indicate the ties to the disputed corner.



- New BT's are not blazed or scribed as they are in residents yard.
- Measured to P.K. nail in sides of trees
- Magnetic bearings taken with handheld compass
- No scale

(i) I, MICHAEL J. ROMPORTL R.L.S. 1624
 (type or print name) certify that the corner location on this record was determined by me or under my direction and control and that this U.S. Public Land Survey Monument Record is correct and complete to the best of my knowledge and belief.

Michael J. Romportl 4-1-86
 Signature Date
 GENISOT & ASSOCIATES INC.
 512 EAGLE ST., RHINE, WI.



380912003P