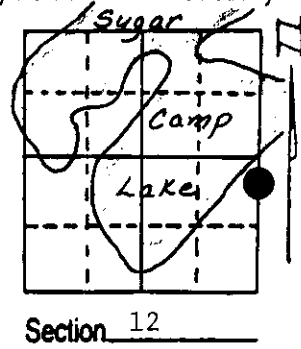


U.S. PUBLIC LAND SURVEY MONUMENT RECORD

Note: This form is intended and designed to fulfill all requirements of Wisconsin Administrative Code, Chapter A-E 7.08 U.S. Public Land Survey Monument Record (3) (a) (b) (c) (d) (e) (f) (g) (h) (i). An additional sheet may be added if necessary to conform with said requirements.

(a) Corner location: Township 38 North
 Range 9 East/West

Town/City/Village Sugar Camp
 County Oneida

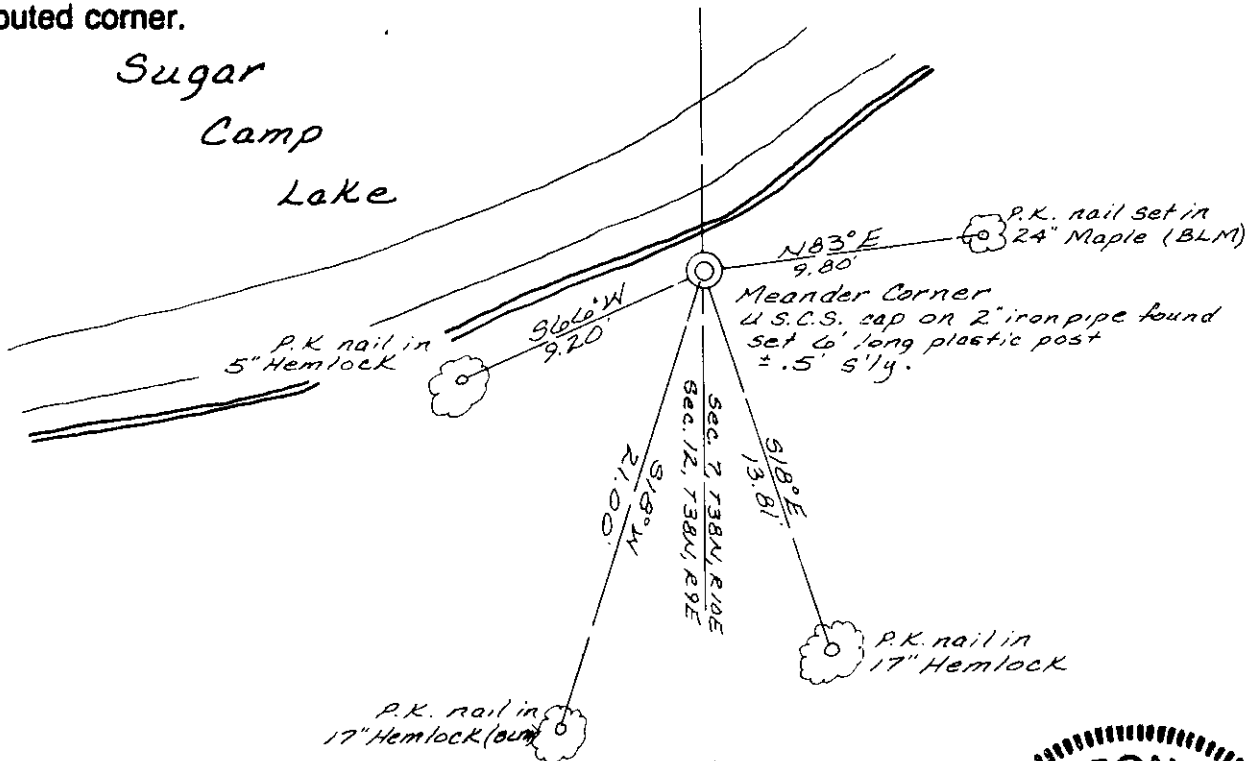


Section 12

(b) (f) (g) (h) Description of monument found at this corner and if it was accepted, state all evidence (material, testimonial, occupational, plats, records, other monuments) used as a basis for accepting. If not accepted or if nothing was found, state evidence used as basis for establishing location. If reestablished through lost corner proportionate methods, indicate all monuments, distances and directions used to establish. Indicate type of monument found or set and sign post.

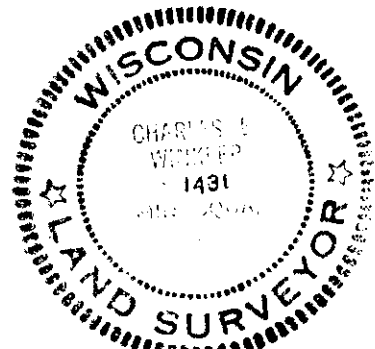
- 1859 - Exterior of T38N, R9E, was originally surveyed by H.C. Fellows. He established the meander corner location and witnessed said corner with a 10" Birch, S23°E, 12 LKS and an 8" Hemlock S72°W, 9 LKS.
- 1956 - BLM conducted a dependent resurvey of Sec. 12, T38N, R9E, and set a U.S. Coastal Survey Cap on a 2" iron pipe at the corner location. New BT's: 16" Maple, N86°E, 10.2", 15" Hemlock, S12°W, 21.8'.
- 1981 - Inman-Foltz and Associates, Inc. recovered and accepted the USCS cap along with a 20" Hemlock, S12°W, 20.8' and a 23" Maple, N86°E, 9.6'.
- 1994 - I found and accepted the USCS cap along with the 2 previous bearing trees.

(c) (d) (e) Plan view of corner with ties to at least 4 witness monuments. If in disagreement with previously established corner, show the distances between the two corners and also indicate the ties to the disputed corner.



(i) I, Charles E. Winkler (S-1431)
 (type or print name) certify that the corner location on this record was determined by me or under my direction and control and that this U.S. Public Land Survey Monument Record is correct and complete to the best of my knowledge and belief.

Charles E. Winkler 1-19-94
 Signature Date
 Inman-Foltz and Associates, Inc.



Stamp 380912/600

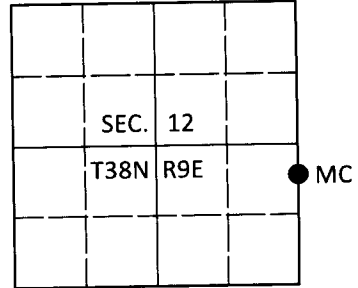
Index No. 9, H-25

U.S. PUBLIC LAND SURVEY MONUMENT RECORD

Note: This form is intended and designed to fulfill all requirements of Wisconsin Administrative Code, Chapter A-E 7.08 U.S. Public Land Survey Monument Record (3)(a-i).

(a) CORNER LOCATION
 Meander Cor. of Secs. 7 & 12
 Township 38 North
 Range 9 & 10 East of the 4th P.M.
 Town of Sugar Camp
 County of Oneida

WISCRS - Oneida County
 N: 222,041.64 USft
 E: 292,429.63 USft
 Datum: NAD83(2011)
 GNSS Method: RTN - Offset
 GNSS Control: WISCORS VRS



(b) HISTORY OF ORIGINAL CORNER ESTABLISHMENT

Original Surveyor: _____ Original Accessories: _____
 Date of Survey Commenced: _____ See previous monument record(s)
 Completed: _____

(b)(f)(g)(h) Description of monument found at this corner and if it was accepted, state all evidence (material, testimonial, occupational, plats, records, other monuments) used as a basis for accepting. If not accepted or if nothing was found, state evidence used as basis for establishing location. If re-established through lost corner proportionate methods, indicate all monuments, distances and directions used to establish. Indicate type of monument and sign post found or set.

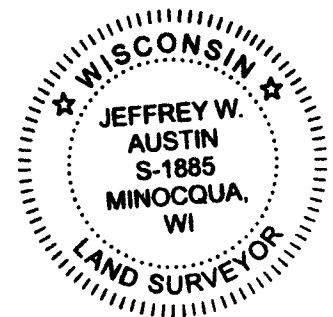
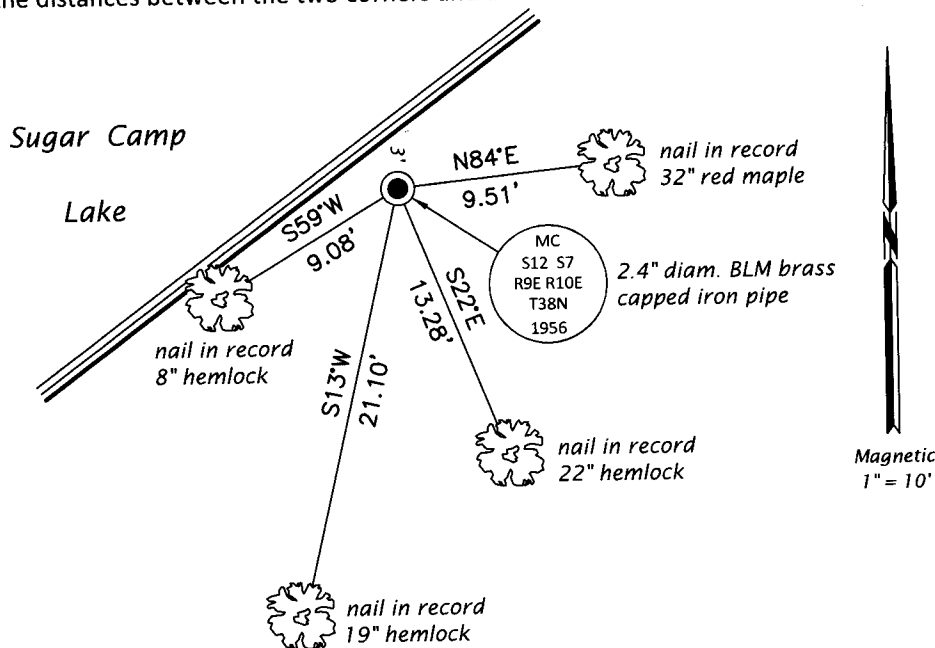
This is a perpetuation of the following monument record(s) that comprise a complete history of the corner:

Jan. 19, 1994: USPLS Monument Record No. 3809121600 by Charles E. Winkler, RLS

July 11, 2019: I found and accepted the record monument, a 2.4" diam. iron pipe with a 3.3" diam. BLM brass cap projecting 10" above the ground surface. I found or established accessories as shown below. As the corner falls in open lakefront, no sign post was set.

The coordinate value shown has been verified by at least one of the following methods: 1) comparison to a previously GPS determined published value; 2) the value is the average of two or more GPS observations at a markedly different time; 3) one or more distances were measured back to the GPS observed corner from temporary GPS observed offset locations.

(c)(d)(e) Plan view of corner with ties to at least 4 witness monuments. If in disagreement with previously established corner, show the distances between the two corners and also indicate the ties to the disputed.

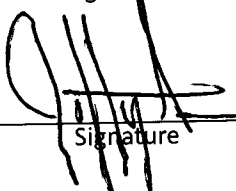


REGISTER OF DEEDS OFFICE
 ONEIDA COUNTY
 FILED

AUG 28 2019

KYLE J. FRANSON
 REGISTER OF DEEDS

(i) I, Jeffrey W. Austin, Professional Land Surveyor No. S-1885, hereby certify that the corner location on this record was determined by me or under my direction and control and that this U.S. Public Land Survey Monument Record is correct and complete to the best of my knowledge and belief.

 _____
 Signature Date: JUL. 29, 2019

3809121600 (INDEX NO. G,H-25)