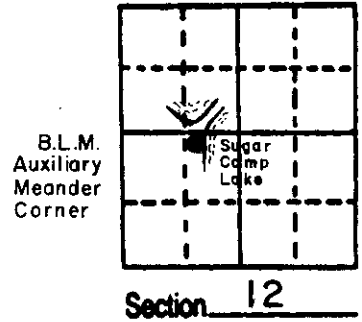


U.S. PUBLIC LAND SURVEY MONUMENT RECORD

Note: This form is intended and designed to fulfill all requirements of Wisconsin Administrative Code, Chapter A-E 5.02, U.S. Public Land Survey Monument Record (3) (a) (b) (c) (d) (e) (f) (g) (h) (i). An additional sheet may be added if necessary to conform with said requirements.

(a) Corner location: Township 38 North
 Range 9 East/West
 Town/City/Village Sugar Camp
 County Oneida

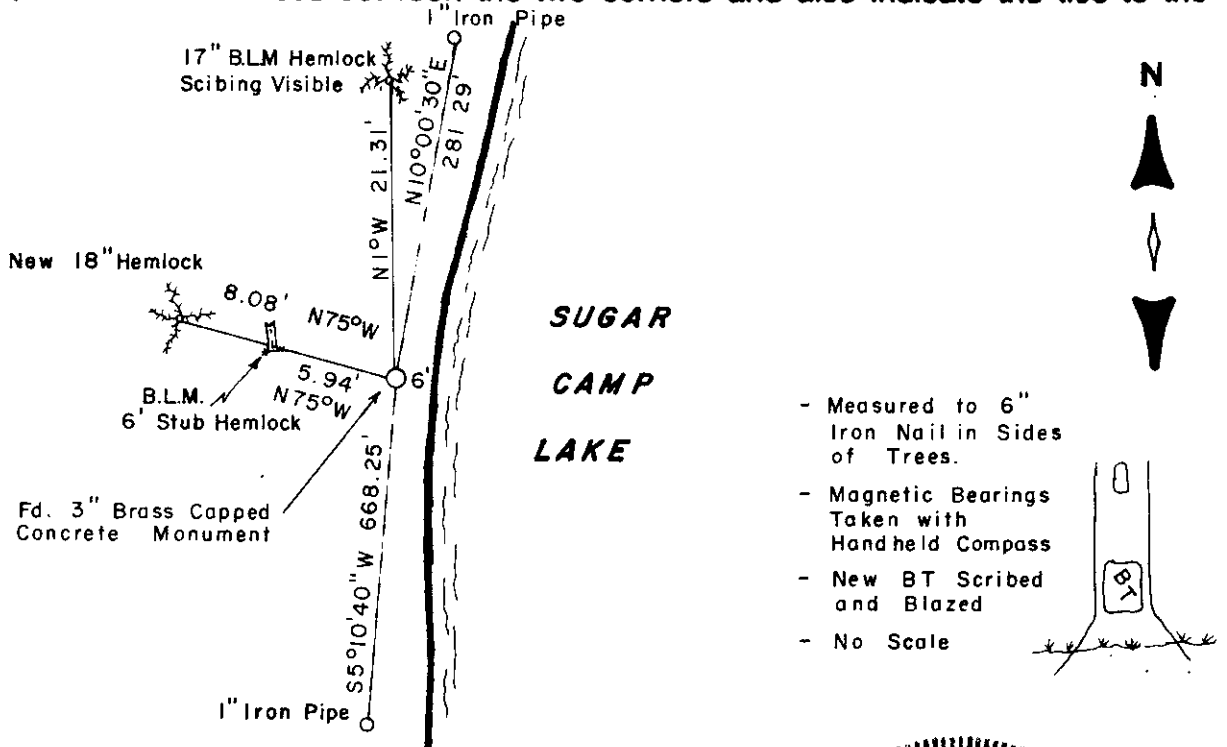


(b) (f) (g) (h) Description of monument found at this corner and if it was accepted, state all evidence (material, testimonial, occupational, plats, records, other monuments) used as a basis for accepting. If not accepted or if nothing was found, state evidence used as basis for establishing location. If reestablished through lost corner proportionate methods, indicate all monuments, distances and directions used to establish.

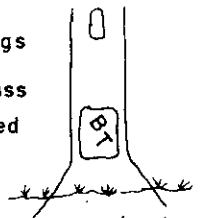
1956- B.L.M. surveyor, Hugh Crawford, set a 3½" brass tablet in concrete while reestablishing the original meander line, intersecting the shore of Sugar Camp Lake at the beginning of the omitted land area. BTs; 8" Hemlock, N 75° W, 9 lks., 14" Hemlock N 1° 30' W, 32½ lks.

1986- We found B.L.M. brass capped conc. monument and witnessed it as shown below.

(c) (d) (e) Plan view of corner with ties to at least 4 witness monuments. If in disagreement with previously established corner, show the distances between the two corners and also indicate the ties to the disputed corner.



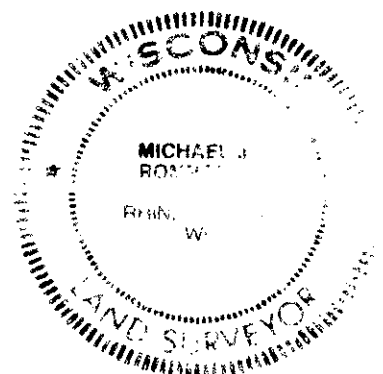
- Measured to 6" Iron Nail in Sides of Trees.
- Magnetic Bearings Taken with Hand held Compass
- New BT Scribed and Blazed
- No Scale



(i) I, MICHAEL J. ROMPORTL R.L.S. 1624
 (type or print name) certify that the corner location on this record was determined by me or under my direction and control and that this U.S. Public Land Survey Monument Record is correct and complete to the best of my knowledge and belief.

Michael J. Romportl 4-1-86
 Signature Date

GENISOT & ASSOCIATES INC.
 1512 EAGLE ST., RHINE, WI.



Index No. 6-22

3809121928