

This form is intended to fulfill the requirements of Chapter A-E 7.08 (3)(a) thru (i) U.S. Public Land Survey Monument Location Record, Wisconsin Administrative Code. Use the reverse side of form for continuation.

# U.S. PUBLIC LAND SURVEY MONUMENT LOCATION RECORD

Recorders Data

USPLS CORNER: **NORTH MC** SECTION: **7** TOWNSHIP: **38** NORTH RANGE: **10** EAST

NAME OF WATERWAY FOR M.C. CORNER: **SUGAR CAMP LAKE** SECTION LINE: **WEST**

~~(CITY/VILLAGE)~~(TOWN) OF: **TOWN OF SUGAR CAMP** COUNTY OF: **ONEIDA**

Description of monument found or placed and all other evidence used as the basis for monument location; including monuments and related measurements required if the corner location was reestablished by lost corner proportionate methods. Also indicate name of original surveyor, original survey date and the corner monument, bearing trees, witness or other reference monuments established; including measured bearing and distance ties, from available records.

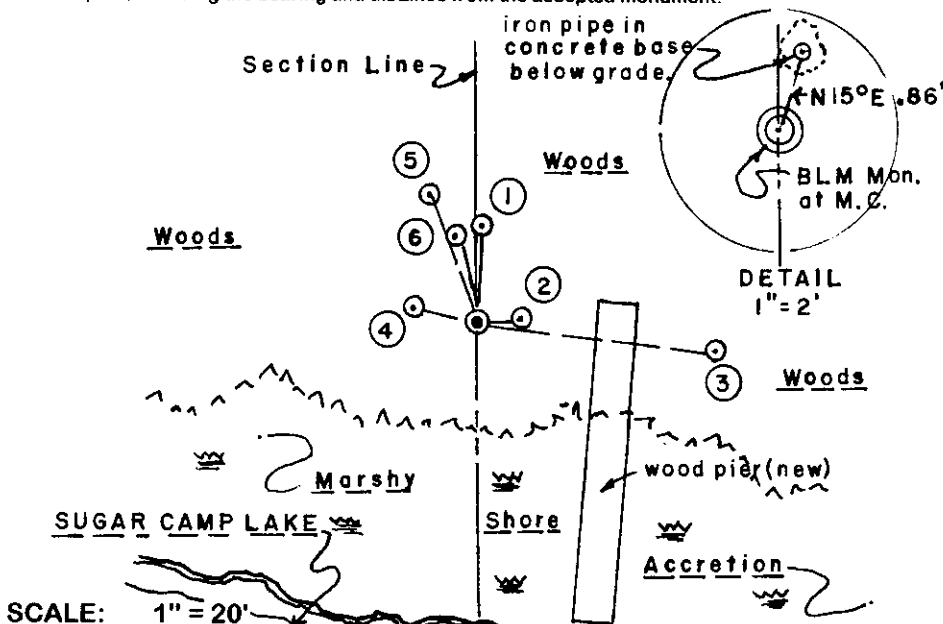
Found and accepted an undisturbed 6" dia. concrete monument with a standard 3.5" dia. brass tablet in top 2" above grade and stamped as this MC by BLM in 1956 during a Dependent Resurvey by H. B. Crawford, who noted that he set the BLM brass capped concrete monument in place of a 2" dia. iron pipe monument found protruding 6" above a concrete monument set flush with the ground, which he removed and buried North and alongside the new concrete monument set; and he noted new BTs: a 6" Maple N81.5°E 7.5 links and an 8" Hemlock N17.5°W 14 links, both blazed and scribe marked, which I found and used for new ties described herein. The NW BLM Hemlock BT now has an open face scar extending about 8' above the root crown with plain scribing and a standard BLM 4"x6" yellow aluminum location tag scribed with initials HBC and S17.5°E 9.8' nailed onto SE face of BT 5.5' above grade. The NE BLM Maple BT face blazing is shut but scaring is plain.

I found top of the old iron pipe in concrete monument, reburied by BLM in 1956, N15°E 0.86' and about 6" below grade.

In July 1859, H.C. Fellows/GLO set a wood post as the original meander corner and marked OBTs: an 8" Bw N54°E 10 links and a 16" Pw N39°W 36 links, which are all now obliterated beyond recovery purposes.

A standard white poly 'T' marker post was set 8" South of the BLM capped monument, which is also located about 15' West of the center of a long 4' wide North/South wood boat dock/walkway into the existing marshy lake bed area, the outer edge of which generally runs N75°W about 35 to 40 feet South of the BLM monument. I also placed several rocks as a cairn around the BLM capped concrete monument at grade to further perpetuate and protect its location.

Plan view map of monument location with bearing and distance ties to a minimum of four(4) described witness or reference monuments of concrete, natural stone, iron, live bearing trees or equivalent material. If applicable, also show a minimum of two(2) bearing and distance ties to any other monument found and not accepted; including the bearing and distance from the accepted monument.



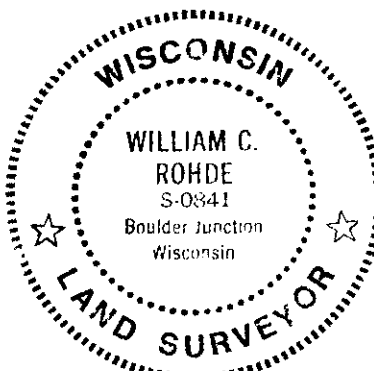
### WITNESS MONUMENT TIES:

- ① Old 1.5" dia. iron pipe monument found N03°E 9.96' with uncapped top 20" above grade.
- ② Old BLM BT 12" Mr N85°E 4.86'.
- ③ New BT 10" Pw S83°E 25.38' to PK nail and washer in left face.
- ④ New BT East 9" trunk of double Mr N77°W 6.54'.
- ⑤ New BT 11" Mr N19°W 14.06' to PK nail & washer in left face.
- ⑥ Old BLM BT 12" Hemlock N13°W 9.16'.

SCALE: 1" = 20'

Unless otherwise indicated, all bearing tree ties are to a .25" dia. by 2.5" long PK nail with a 1.25" dia. steel washer driven into unblazed right face and a .25" dia. by 2.5" long PK nail with a 2" dia. steel washer stamped BT is also driven into unblazed face of bearing tree at DBH; the basis for measured bearings is by compass to nearest degree and all tie distances are measured horizontal by steel tape corrected to nearest 1/100th feet at standard temperature of 68° F.

RLS SEAL:



### LAND SURVEYOR CERTIFICATE:

I, William C. Rohde, hereby certify that I am duly licensed as a Professional Land Surveyor in the State of Wisconsin; that this USPLS monument location was determined by me and/or under my direct supervision and control; and that this U.S. Public Land Survey Monument Location Record is true and correct to the best of my knowledge and belief.

Signed: *William C. Rohde*  
William C. Rohde RLS 841

	T 38 N		
	7		
	RIOE		

SHEET 1 OF 1  
FORM REVISED: 06/01/99

Date Signed: November 8, 1999

SECTION LOCATION MAP  
INDEX NO. E-F 1

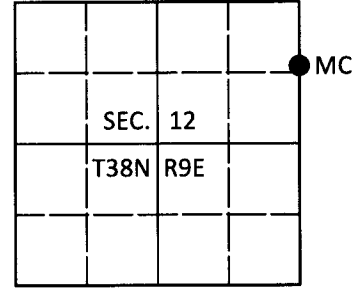
OK map RETIE OF PREVIOUS USPLS FORM - 11/8/99  
3809123200

# U.S. PUBLIC LAND SURVEY MONUMENT RECORD

Note: This form is intended and designed to fulfill all requirements of Wisconsin Administrative Code, Chapter A-E 7.08 U.S. Public Land Survey Monument Record (3)(a-i).

(a) CORNER LOCATION  
 Meander Cor. of Secs. 7 & 12  
 Township 38 North  
 Range 9 & 10 East of the 4th P.M.  
 Town of Sugar Camp  
 County of Oneida

WISCRS - Oneida County  
 N: 224,802.53 USft  
 E: 292,476.09 USft  
 Datum: NAD 83(2011)  
 GNSS Method: RTN - Offset  
 GNSS Control: WISCORS VRS



(b) HISTORY OF ORIGINAL CORNER ESTABLISHMENT

Original Surveyor: \_\_\_\_\_ Original Accessories: \_\_\_\_\_  
 Date of Survey Commenced: \_\_\_\_\_ See previous USPLS Monument Record  
 Completed: \_\_\_\_\_

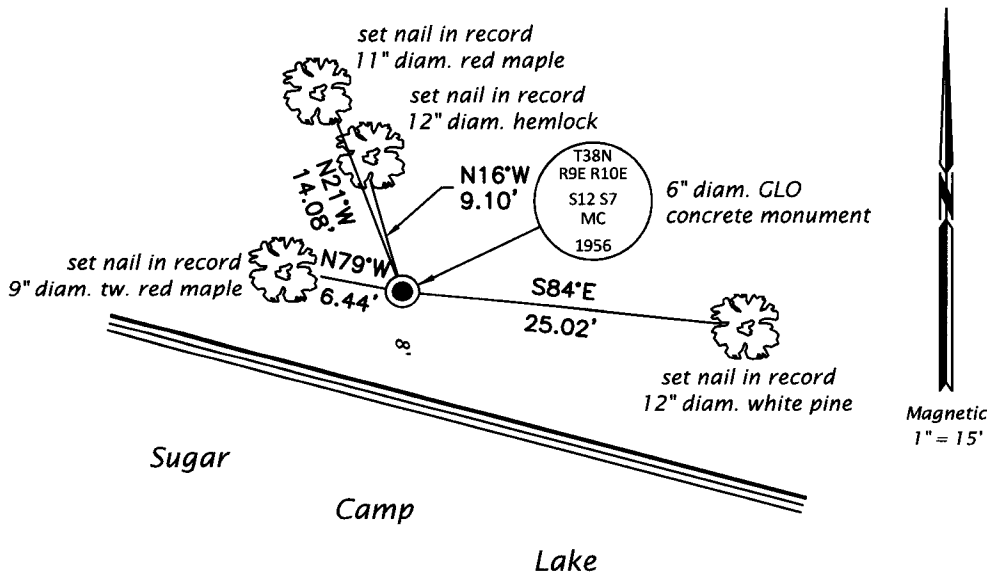
(b)(f)(g)(h) Description of monument found at this corner and if it was accepted, state all evidence (material, testimonial, occupational, plats, records, other monuments) used as a basis for accepting. If not accepted or if nothing was found, state evidence used as basis for establishing location. If re-established through lost corner proportionate methods, indicate all monuments, distances and directions used to establish. Indicate type of monument and sign post found or set.

*This is a perpetuation of a previous USPLS Monument Record by William C. Rohde, RLS dated November 8, 1999 and filed in the office of the Oneida County Register of Deeds. A complete history of the corner can be found on the previous monument record. I accept the previous location as a true and faithful perpetuation or reestablishment of the original corner location and further perpetuate it as follows.*

*May 15, 2018: I found and accepted the record monument, a 6" diam. concrete monument with a 3-1/4" diam. GLO brass tablet flush with the ground surface. The record bearing tree at N85°E is down. A 1-3/4" diam. iron pipe bears N1°E, 9.95 ft. I found or established accessories as shown below. I found a white vinyl sign post bearing South, 0.7 ft.*

*The coordinate value shown has been verified by at least one of the following methods: 1) comparison to a previously GPS determined published value; 2) the value is the average of two or more GPS observations at a markedly different time; 3) one or more distances were measured back to the GPS observed corner from temporary GPS observed offset locations.*

(c)(d)(e) Plan view of corner with ties to at least 4 witness monuments. If in disagreement with previously established corner, show the distances between the two corners and also indicate the ties to the disputed.

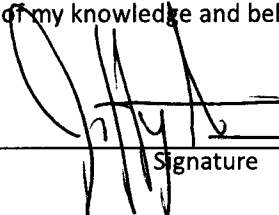


REGISTER OF DEEDS OFFICE  
 ONEIDA COUNTY  
 FILED

JUN 13 2018

KYLE J. FRANSON  
 REGISTER OF DEEDS

(i) I, Jeffrey W. Austin, Professional Land Surveyor No. S-1885, hereby certify that the corner location on this record was determined by me or under my direction and control and that this U.S. Public Land Survey Monument Record is correct and complete to the best of my knowledge and belief.

 \_\_\_\_\_  
 Signature Date JUNE 4, 2018