

U.S. PUBLIC LAND SURVEY MONUMENT RECORD

Note: This form is intended and designed to fulfill all requirements of Wisconsin Administrative Code, Chapter A-E 7.08 U.S. Public Land Survey Monument Record (3) (a) (b) (c) (d) (e) (f) (g) (h) (i). An additional sheet may be added if necessary to conform with said requirements.

(a) Corner location: Township 38 North Corner: NW Section Corner

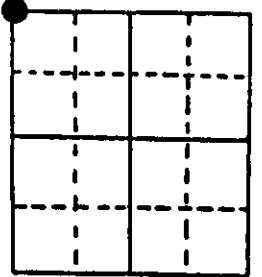
Section 19 Range 10 East Original Surveyor: Hiram Fellows

Town/City/Village Sugar Camp

County Oneida

Original B.T.'s: 6" L S70°W 12 lks
 14" L N48°W 39 lks
 16" Mh N80°E 25 lks
 10" H S18°E 29 lks

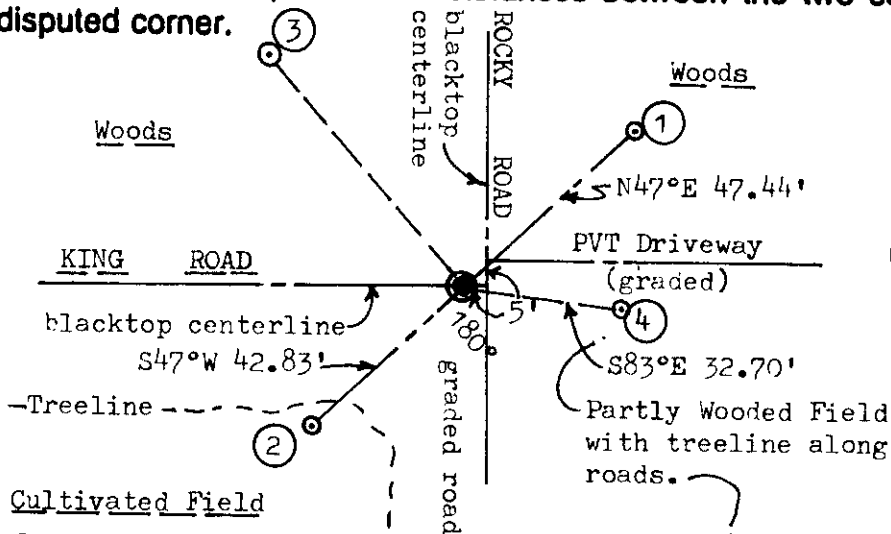
Original Survey Date: July 1859 ● Location



(b) (f) (g) (h) Description of monument found at this corner and if it was accepted, state all evidence (material, testimonial, occupational, plats, records, other monuments) used as a basis for accepting. If not accepted or if nothing was found, state evidence used as basis for establishing location. If reestablished through lost corner proportionate methods, indicate all monuments, distances and directions used to establish. Indicate type of monument found or set and sign post.

Found and accepted an old 3/4" dia. iron pipe undisturbed at this corner location with top uncapped nearly flush with existing blacktop roadway surface and a PK nail set in center by previous survey; also found an older 2" dia. by 30" long iron pipe reference monument that is painted yellow, with a stamped 2 1/2"x4 1/2"x1/4" thick stamped cap plate "50 lks West to Cor". The reference monument was tipped and loose in ground, so I plumbed and set it deeper with top 14" above grade and stamped new tie distance on cap plate. All original GLO survey corner evidence is now obliterated. In 1909, Vaughn found a post at corner by Dorr and noted his BT nearly gone, so Vaughn marked a new BT 16" Bw stump S83°E 37 lks; both now gone. In 1937, Maine retraced Vaughns corners along East line of Section 13 South to verify this corner location and noted he set an iron pipe at the corner in existing roadway and also set iron pipe reference monuments N45°W 0.45 ch and S45°W 0.45 ch; the latter reference monuments set by Maine are apparently now gone in roadway as no magnetic locator signal indicated same. This recovery completed April 8, 1998; there were no witnesses, other than drive by vehicles.

(c) (d) (e) Plan view of corner with ties to at least 4 witness monuments. If in disagreement with previously established corner, show the distances between the two corners and also indicate the ties to the disputed corner.

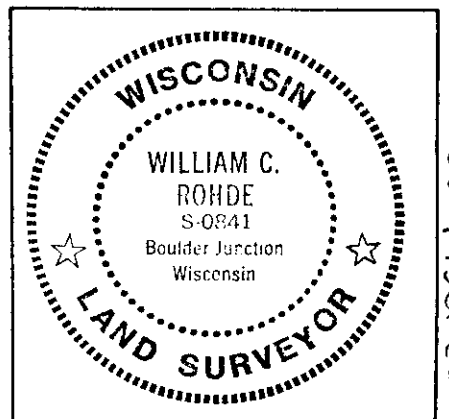


Witness Monument Ties:

- ① 2" dia. by 30" long aluminum pipe monument set with stamped
- ② Oneida County cap flush with grade.
- ③ New BT 8" Mh N40°W 62.95'.
- ④ Old 2" dia. reference pipe found tipped and loose; I reset with stamped cap 14" above grade and stamped new tie distance on 2.5"x4.5"x1/4" cap welded at top. Set standard white poly 'T' post 5" NE.

Unless otherwise indicated, all BT witness monument ties are to a 1/4" dia. by 2.5" long PK nail with 1.25" dia. steel washer set in unblazed right face bark; and a PK nail with 2" dia. steel washer stamped BT also set in unblazed front face bark of each BT at DBH. All previous corner recovery notes from Wisconsin DNR and/or Oneida County survey records.

Scale: 1" = 40'



(i) I, William C. Rohde, RLS 841
 (type or print name) certify that the corner location on this record was determined by me or under my direction and control and that this U.S. Public Land Survey Monument Record is correct and complete to the best of my knowledge and belief.

William C. Rohde
 Signature

April 9, 1998
 Date