

U.S. PUBLIC LAND SURVEY MONUMENT RECORD

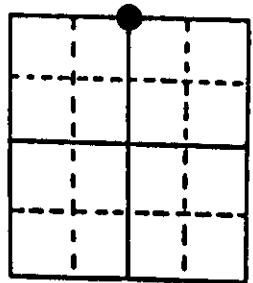
Note: This form is intended and designed to fulfill all requirements of Wisconsin Administrative Code, Chapter A-E 7.08 U.S. Public Land Survey Monument Record (3) (a) (b) (c) (d) (e) (f) (g) (h) (i). An additional sheet may be added if necessary to conform with said requirements.

(a) Corner location: Township 38 North Corner: North 1/4 Corner

Section 24 Range 9 East Original Surveyor: William Daugherty

Town/City/Village Sugar Camp Original B.T.'s: 12" C. N48°E 13 lks
10" C. S12°E 11 lks

County Oneida

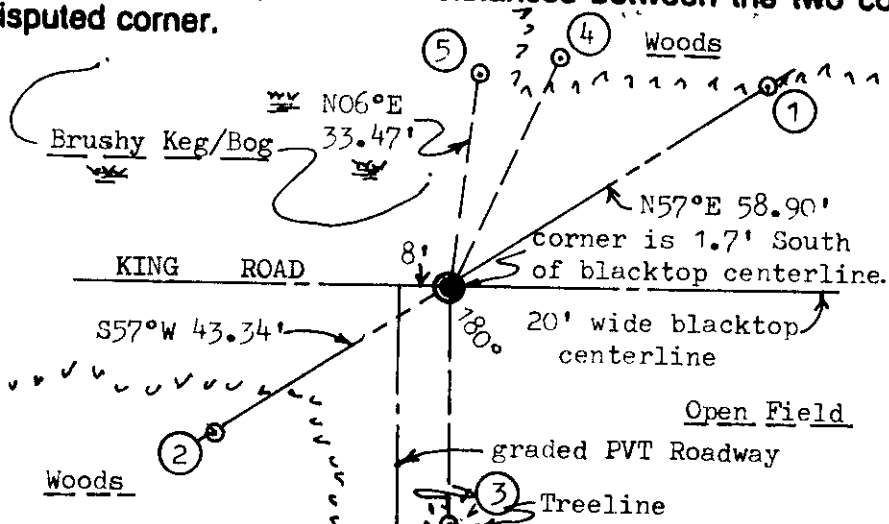


Original Survey Date: September 1863 ● Location

(b) (f) (g) (h) Description of monument found at this corner and if it was accepted, state all evidence (material, testimonial, occupational, plats, records, other monuments) used as a basis for accepting. If not accepted or if nothing was found, state evidence used as basis for establishing location. If reestablished through lost corner proportionate methods, indicate all monuments, distances and directions used to establish. Indicate type of monument found or set and sign post.

Found and accepted a 3/4" dia. uncapped iron pipe at this corner with undisturbed top nearly flush with existing blacktop roadway pavement. All original GLO survey corner evidence is obliterated. In 1909, Vaughn noted BT's for a post set at the corner, but neither were found by Maine in 1937, who noted he set an iron pipe in road at this quarter corner midway on a right line between opposite section corners, and also set iron pipe witness posts 50 links North and South of the corner pipe set; I found the North witness pipe as noted below, but the South witness pipe is now gone, undoubtedly due to adjacent private roadway grading. I left the iron pipe found at the corner in the new blacktop roadway mat and set standard Oneida County reference monuments at the ends of straight line thru the corner as noted for new ties below. I set a 1/4" dia. by 2 1/2" long PK nail in the top of the corner pipe found as a centering point for new ties. I could not replumb the old witness pipe found North so I drove it deeper and stamped a new tie distance on the 4" square by 1/4" thick plate cap, 32" above grade. The old witness pipe was painted yellow. This recovery was completed April 8, 1998 and witnessed by adjacent owners to south and north, who had stopped by to query about what I was doing, which resulted in a rather lengthy chat about old surveying history. I set a standard white poly corner marker post 10" ESE of the SW reference monument set.

(c) (d) (e) Plan view of corner with ties to at least 4 witness monuments. If in disagreement with previously established corner, show the distances between the two corners and also indicate the ties to the disputed corner.



Witness Monument Ties:

- ① 2" dia. by 30" long aluminum pipe monument set with stamped Oneida County cap 6" above grade due to refusal below.
- ② Oneida County cap 6" above grade due to refusal below.
- ③ New BT 12" Fb S02°W 82.97' on old fenceline/treeline.
- ④ New BT 9" Fb double N24°E at 39.66'.
- ⑤ A 1.5" dia. reference pipe found loose and tipped to the North; could not plumb but drove deeper with 4" sq. x 1/4" stamped plate at top 32" high.

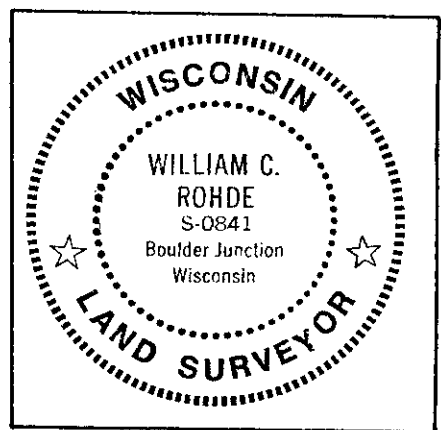
Scale: 1" = 30'

Unless otherwise indicated, all BT witness monument ties are to a 1/4" dia. by 2.5" long PK nail with 1.25" dia. steel washer set in unblazed right face bark; and a PK nail with 2" dia. steel washer stamped BT also set in unblazed front face bark of each BT at DBH. All previous corner recovery notes from Wisconsin DNR and/or Oneida County survey records.

(i) I, William C. Rohde, RLS 841
(type or print name) certify that the corner location on this record was determined by me or under my direction and control and that this U.S. Public Land Survey Monument Record is correct and complete to the best of my knowledge and belief.

William C. Rohde
Signature

April 9, 1998
Date



Index No. N. 23
3809130020