

U.S. PUBLIC LAND SURVEY MONUMENT RECORD

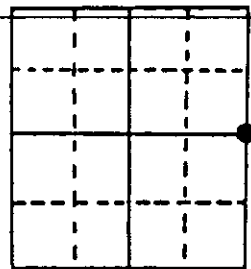
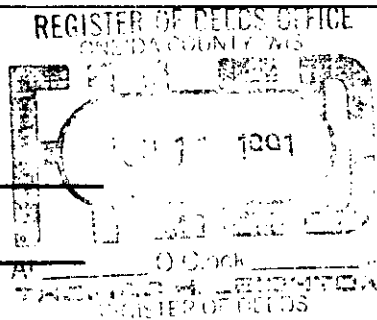
Note: This form is intended and designed to fulfill all requirements of Wisconsin Administrative Code, Chapter A-E 7.08 U.S. Public Land Survey Monument Record (3) (a) (b) (c) (d) (e) (f) (g) (h) (i). An additional sheet may be added if necessary to conform with said requirements.

(a) Corner location: Township 38 North

Range 9 East/West

Town/City/Village SUGAR CAMP

County ONEIDA

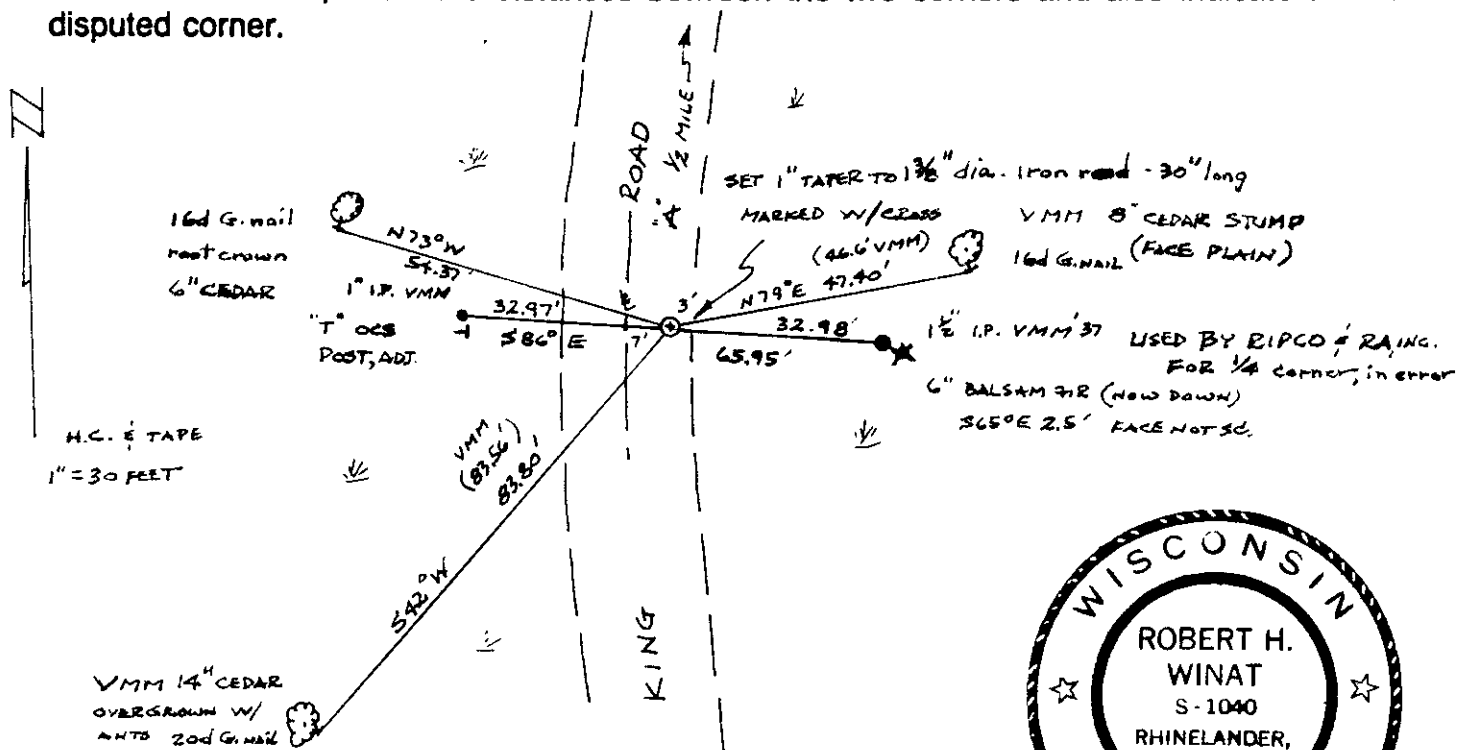


Section 13

(b) (f) (g) (h) Description of monument found at this corner and if it was accepted, state all evidence (material, testimonial, occupational, plats, records, other monuments) used as a basis for accepting. If not accepted or if nothing was found, state evidence used as basis for establishing location. If reestablished through lost corner proportionate methods, indicate all monuments, distances and directions used to establish. Indicate type of monument found or set and sign post.

Original; Hiram C. Fellows, 18 July, 1859 North betwn. Sec. 13 & 18 var 8°E, 0.00 chns; 15.50 chns enter tamarac swamp bears E&W; 40.00 chns set 1/4 post, Cedar 8", N30°W, 15 lks. and Cedar 14", S67°E, 5 lks.; 71.00 chns leave cedar & tamarac swamp bears NE&SW.... OCS, Dorr & Vaughan's field notes, pg. 247... NE corner Section 13... run south, var 2 1/2° E, 39.72 chns. hit E 1/4 post; found east tree ok!... 28 June 1910, D.H. Vaughan, OCS. V.M. Maine, OCS, 10 May '37, At 1/4 corner... identified by stp, cut high, of orig. B.T.-marks plain, viz; Cedar 14" S67°E, .05 chn., also old scribed stake on east side of road. Offset iron pipes 2 rods E&W; boxed two new B.T.'s..... not scribed, viz; Cedar 8" S40°W, 1.266 chns. and Cedar 10" N76°E, .706 chns. Resurveys by RIPC0 '62 & Robinson & Assoc. '78 used the east witness iron pipe for the 1/4 corner... iron pipe 40 feet east of centerline. NOTE: VMM notes not available until 1990. 1 Jun '91, I find VMM's witness pipes and bt's ok! 8 Jun '91, I set 1-3/8" iron shaft, with cross, flush in pav't. for corner; make ties as shown below to preserve corner.

(c) (d) (e) Plan view of corner with ties to at least 4 witness monuments. If in disagreement with previously established corner, show the distances between the two corners and also indicate the ties to the disputed corner.



(i) I, Robert H. Winat, S-1040 8 June 1991

(type or print name) certify that the corner location on this record was determined by me or under my direction and control and that this U.S. Public Land Survey Monument Record is correct and complete to the best of my knowledge and belief.

Robert H. Winat, Land Surveyor
Signature Date 10 June '91

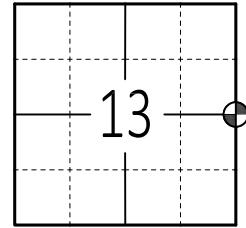
U.S. PUBLIC LAND SURVEY MONUMENT RECORD

ONEIDA COUNTY, WISCONSIN

COUNTY INDEX NO: L 25
 WI CORNER IDENTIFICATION NO: 43809132000

MONUMENT TYPE: BERNTSEN SURVEY NAIL
 HORIZONTAL DATUM: NAD 83 ADJUSTMENT 2011
 (WCCS) ONEIDA COUNTY COORDINATE: N= 217617.484 E= 292385.200
 DATE OF SURVEY: 4-8-2025
 SURVEY PARTY: T. RUTZEN & W. STROMBOM

SECTION 13
 TOWNSHIP 38
 RANGE 9



(INDICATE CORNER BY )

Oneida County
 Land Information Office
 Filed
4/14/2025

FOUND SET RE-SET RE-TIED

BASIS FOR MONUMENT LOCATION

(BRIEF DESCRIPTION OF CORNER HISTORY)

1859: HIRAM C. FELLOWS SET THE 1/4 POST AT 40.00 CHAINS NORTH OF THE SOUTHEAST SECTION CORNER OF SECTION 13, SET BT'S AS TIES.

1937: V.M. MAINE FOUND CORNER AND BT'S. SET AN IRON PIPE, 2 RODS (33') EAST AND WEST OF CORNER, SET 2 NEW BT'S AND RETIED CORNER.

1991: R. WINAT FOUND THE TWO IRON PIPE WITNESSES AND BT'S. HE SET A 1-3/8" IRON SHAFT AT CORNER FLUSH IN PAVEMENT, RE-TIED CORNER TO NEW BT'S.

2025: KING ROAD WAS RECENTLY RAISED AND RE-PAVED, LIKELY THE CORNER WAS OBLITERATED DURING THIS PROJECT. I FOUND THE TWO IRON PIPE WITNESSES AND REMNANTS OF ALL 3 BEARING TREES WITH NAILS FROM R. WINAT'S TIE SHEET. SEVERAL OF THE BT'S WERE FALLING OVER AND DETERIORATED. THE FOUND IRON PIPES WERE STILL STABLE AND IN GOOD CONDITION. TO RE-ESTABLISH THIS OBLITERATED CORNER, I BEST FIT THE BEARING TREES AS WELL AS THE 2 IRON PIPE WITNESSES. SET A SURVEY NAIL AT CORNER LOCATION, SET 3 NEW TIES AND RE-TIED CORNER.

SEAL:



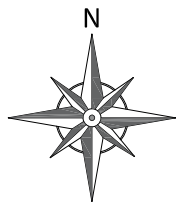
DATA SHOWN HERE ON THIS TIE SHEET IS CORRECT AND COMPLETE TO THE BEST OF MY KNOWLEDGE AND BELIEF

SIGNATURE: 
 TIMOTHY G. RUTZEN, PLS 2994




DATE: 4/14/25

PLAN VIEW

NOTE: CORNER FALLS 8.5' +/- EAST OF THE CENTERLINE OF KING ROAD.



LEGEND

-  SECTION/QUARTER CORNER
-  SET 0.75" X 24" IRON BAR, 1.50lbs/ft
-  FOUND 1.00" O.D. IRON PIPE

