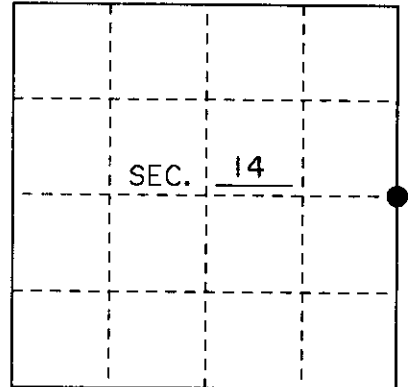


# U.S. PUBLIC LAND SURVEY MONUMENT RECORD

Note: This form is intended and designed to fulfill all requirements of Wisconsin Administrative Code, Chapter A-E 7.08 U.S. Public Land Monument Record (3)(a)(b)(c)(d)(e)(f)(g)(h)(i). An additional sheet may be added if necessary to conform with said requirements.

(a) CORNER LOCATION: East Line County or State Plane Coordinates  
E 1/4 Corner of Section 14 Northing \_\_\_\_\_  
 Township 38 North Easting \_\_\_\_\_  
 Range 9 East Datum Base \_\_\_\_\_  
 Township/City Sugar Camp County of Oneida



(b) HISTORY OF ORIGINAL CORNER ESTABLISHMENT Original B.T.'s  
 Original Surveyor: William E. Daugherty 14" Maple N 10°E 49Lks.  
 Date of Survey: September 1863 14" Birch S 59°W 10 Lks.

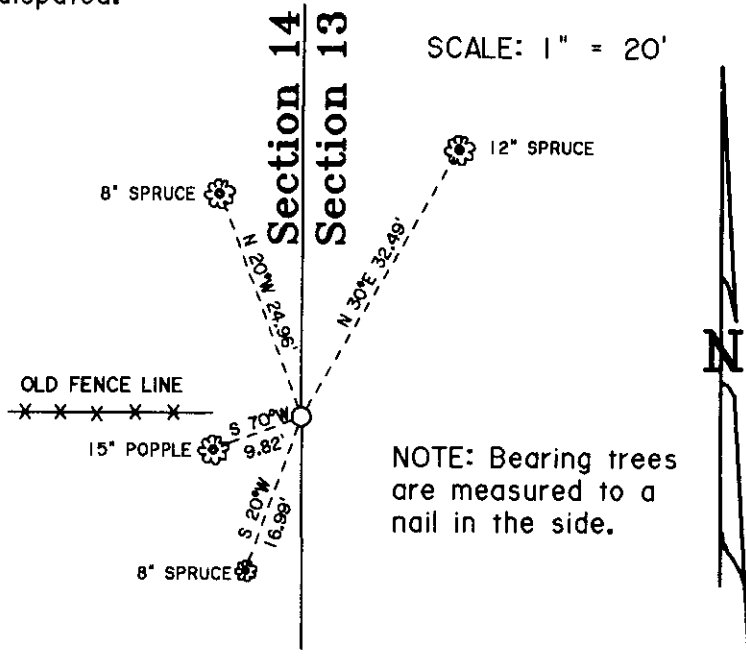
(b)(f)(g)(h) Description of monument found at this corner and if it was accepted, state all evidence (material, testimonial, occupational, plats, records, other monuments) used as a basis for accepting. If not accepted or if nothing was found, state evidence used as basis for establishing location. If reestablished through lost corner proportionate methods, indicate all monuments, distances and directions used to establish. Indicate type of monument and sign post found or set.

SEPTEMBER 1863: WILLIAM E. DAUGHERTY SET EAST 1/4 CORNER WITH WOOD POST

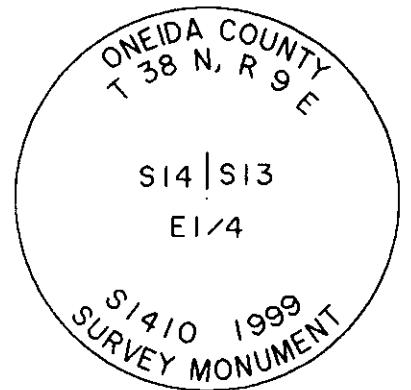
9-2-76: WILLIAM E. BANDOW SET EAST 1/4 WITH AN IRON PIPE. ONEIDA COUNTY FILE B213.

10-25-99: I, JAMES L. WILL FOUND AN 1 1/2" IRON PIPE .71 FEET ABOVE THE GROUND. I ALSO FOUND AN OLD FENCE LINE RUNNING EAST AND WEST. I REPLACED THE IRON PIPE WITH A 2" x 30" ONEIDA COUNTY ALUMINUM MONUMENT WITH AN MAGNETIC ALUMINUM CAPPED STAMPED TO IDENTIFY THE CORNER AS SHOWN BELOW. I SET THIS MONUMENT .5 FEET ABOVE THE GROUND. I ALSO MADE FOUR NEW BEARING TREES AS SHOWN BELOW. I SET A PLASTIC SIGN POST 1' NORTH EAST OF CORNER.

(c)(d)(e) Plan view of the corner with ties to at least 4 witness monuments. If in disagreement with previously established corner, show the distances between the two corners and also indicate the ties to the disputed.

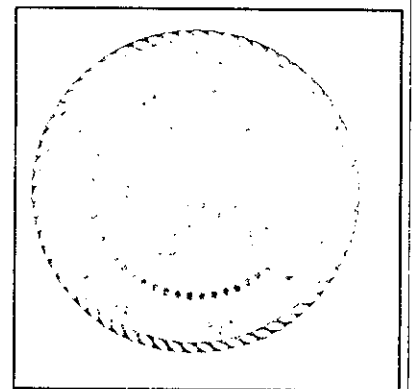


NOTE: Bearing trees are measured to a nail in the side.



(i) I, James L. Will R.L.S. No. 1410  
 hereby certify that the corner location on this record was determined by me or under my direction and control and that this U.S. Public Land Survey Monument Record is correct and complete to the best of my knowledge and belief.

Signature *James L. Will* Date 10-25-99



3809142600

Index No. L-21