

This form is intended to fulfill the requirements of Chapter A-E 7.08 (3)(a) thru (l) U.S. Public Land Survey Monument Location Record, Wisconsin Administrative Code. Use the reverse side of form for continuation.

U.S. PUBLIC LAND SURVEY MONUMENT LOCATION RECORD

Recorders Data

USPLS CORNER: SOUTH WITNESS M.C. SECTION: 13 TOWNSHIP: 38 NORTH RANGE: 9 EAST

NAME OF WATERWAY FOR M.C. CORNER: BASS LAKE SECTION LINE: WEST

(CITY)(VILLAGE)(TOWN) OF: SUGAR CAMP COUNTY OF: ONEIDA

Description of monument found or placed and all other evidence used as the basis for monument location; including monuments and related measurements required if the corner location was reestablished by lost corner proportionate methods. Also indicate name of original surveyor, original survey date and the corner monument, bearing trees, witness or other reference monuments established; including measured bearing and distance ties, from available records.

Found and accepted an old plumb and very stable 1.25" dia. iron pipe monument with uncapped top 5" above existing grade of lake shore bank, which I did not reset with a standard Oneida County aluminum monument due to underlying rocky and stoney subsoil conditions.

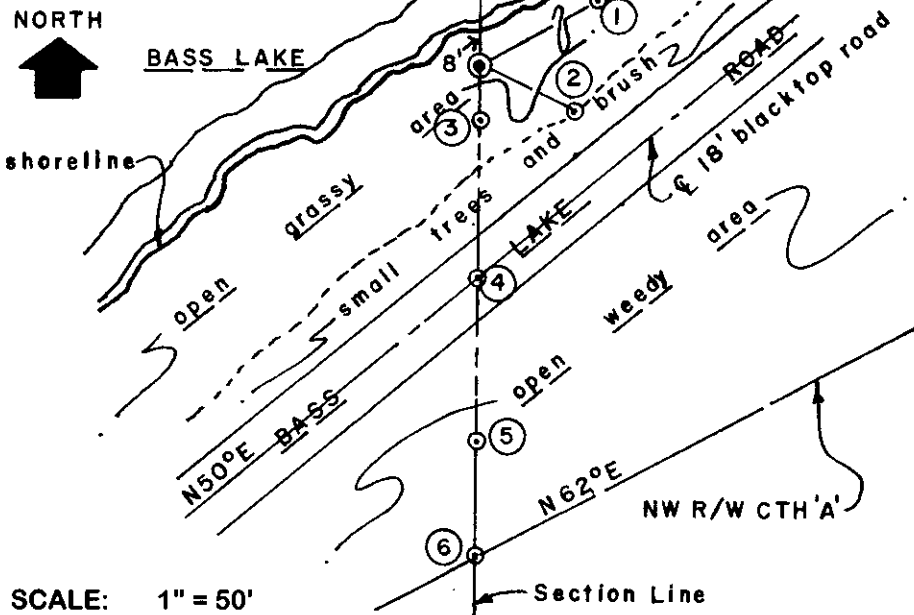
In September 1863, William E. Daugherty/GLO set a wood post as the original corner and marked OBTs: a 7" Bw S71°W 8 links and a 14" Bw N82°E 9 links, all of which are now obliterated.

In June 1978, Norman Loftus/RLS 259, noted the foregoing iron pipe monument and other reference monuments, which I also found OK and used for new ties described below, per his plat of survey filed as L-338 in Oneida County survey records.

I set a 3 foot long section of standard white poly 'T' corner marker post 12" into the ground and 4" north of the old iron pipe monument found at this record witness meander corner location.

This recovery completed September 9, 1999; there were no direct witnesses other than an occasional vehicle driveby.

Plan view map of monument location with bearing and distance ties to a minimum of four(4) described witness or reference monuments of concrete, natural stone, iron, live bearing trees or equivalent material. If applicable, also show a minimum of two(2) bearing and distance ties to any other monument found and not accepted; including the bearing and distance from the accepted monument.



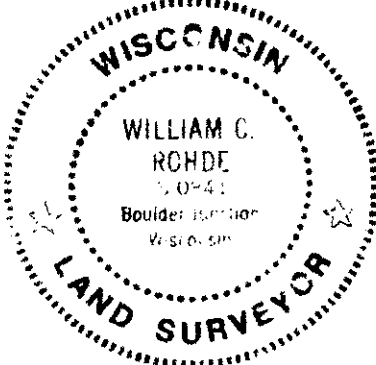
WITNESS MONUMENT TIES:

- ① New BT 13" Bw N60°E 81.75'.
- ② New BT S64°E 26.80' to PK nail & washer in left face of trunk of 5 Mr.
- ③ Old 3/4" dia. iron pipe found with uncapped top 2" up South 14.25'.
- ④ RR spike found in center of black top roadway pavement South 56.17'.
- ⑤ Old 3/4" dia. iron pipe found with uncapped top 2" up South 97.87'.
- ⑥ Old 1" dia. iron pipe found with uncapped top 2" up South 126.57'. White poly red top stakes also found near above iron pipe monuments.

SCALE: 1" = 50'

Unless otherwise indicated, all bearing tree ties are to a .25" dia. by 2.5" long PK nail with a 1.25" dia. steel washer driven into unblazed right face and a .25" dia. by 2.5" long PK nail with a 2" dia. steel washer stamped BT is also driven into unblazed face of bearing tree at DBH; the basis for measured bearings is by compass to nearest degree and all tie distances are measured horizontal by steel tape corrected to nearest 1/100th feet at standard temperature of 68° F.

RLS SEAL:



LAND SURVEYOR CERTIFICATE:

I, William C. Rohde, hereby certify that I am duly licensed as a Professional Land Surveyor in the State of Wisconsin; that this USPLS monument location was determined by me and/or under my direct supervision and control; and that this U.S. Public Land Survey Monument Location Record is true and correct to the best of my knowledge and belief.

Signed: *William C. Rohde*
William C. Rohde RLS 841

	T 38 N		
	13		
	R 9 E		