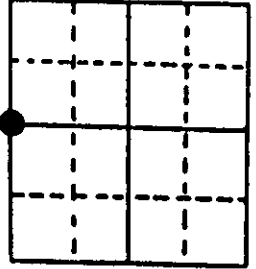


# U.S. PUBLIC LAND SURVEY MONUMENT RECORD

**Note:** This form is intended and designed to fulfill all requirements of Wisconsin Administrative Code, Chapter A-E 7.08 U.S. Public Land Survey Monument Record (3) (a) (b) (c) (d) (e) (f) (g) (h) (i). An additional sheet may be added if necessary to conform with said requirements.

(a) Corner location: Township 38 North Corner: West 1/4 Corner  
 Section 14 Range 9 East Original Surveyor: William Daugherty  
 Town/City/Village Sugar Camp Original B.T.'s: 10" Mh S34°W 12 lks  
 County Oneida 14" Mh S77°E 21 lks



Original Survey Date: September 1863 ● Location

(b) (f) (g) (h) Description of monument found at this corner and if it was accepted, state all evidence (material, testimonial, occupational, plats, records, other monuments) used as a basis for accepting. If not accepted or if nothing was found, state evidence used as basis for establishing location. If reestablished through lost corner proportionate methods, indicate all monuments, distances and directions used to establish. Indicate type of monument found or set and sign post.

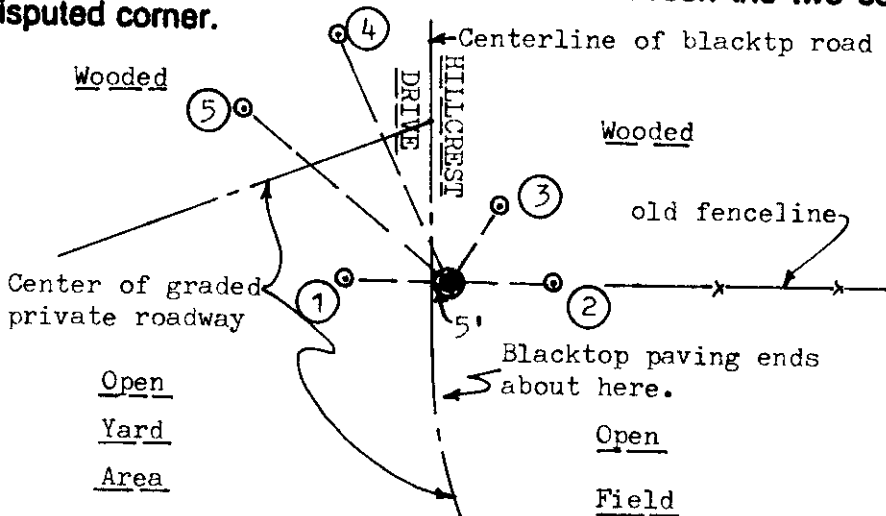
Lacking any original GLO or other record survey corner evidence in the corner location area, I found and accepted an old railroad spike driven flush in existing old blacktop pavement, which the owner of land to the West stated was on his north boundary; an old fenceline was also found East of the corner spike on top of hill mass above roadway grade. In 1910, Vaughn set a wood post at the corner by proportion between opposite section corners, and noted a single BT 16" Bw stump N28½°E 9½ lks, which is now gone due to the roadway grading since. This recovery completed April 9, 1998.

**Note:** I also set a standard white poly 'T' corner marker post on top of hill East of the corner and 6" East of 1" dia. reference monument pipe set.

Carefull map and aerial photo inspection also compares favorably with this corner location by common report.

Subsequent to the above, a Plat of Survey by Loftus, September 1986 and filed as C-537 in Oneida County survey records, notes that he found and accepted a railroad spike at corner.

(c) (d) (e) Plan view of corner with ties to at least 4 witness monuments. If in disagreement with previously established corner, show the distances between the two corners and also indicate the ties to the disputed corner.



**Witness Monument Ties:**

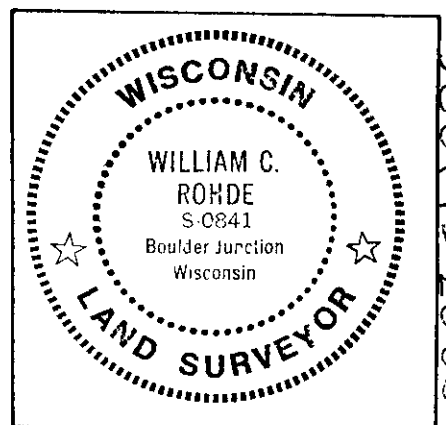
- ① 1" dia. by 26" long iron pipe set with standard poly Ref. Mk plug cap flush with grade West 33.00'.
- ② 1" dia. by 28" long iron pipe set with standard poly Ref. Mk plug cap 2" above grade East 33.00' on top of hill bank.
- ③ South trunk of 7" Bw (double) new BT N31°E 28.94'.
- ④ New BT 7" Pw N25°W 85.64'.
- ⑤ New BT 11" Pr N58°W 84.64'.

Scale: 1" = 60'

Unless otherwise indicated, all BT witness monument ties are to a 1/4" dia. by 2.5" long PK nail with 1.25" dia. steel washer set in unblazed right face bark; and a PK nail with 2" dia. steel washer stamped BT also set in unblazed front face bark of each BT at DBH. All previous corner recovery notes from Wisconsin DNR and/or Oneida County survey records.

(i) I, William C. Rohde, RLS 841  
 (type or print name) certify that the corner location on this record was determined by me or under my direction and control and that this U.S. Public Land Survey Monument Record is correct and complete to the best of my knowledge and belief.

William C. Rohde Signature  
 April 23, 1998  
 April 9, 1998 Date



Index No. L-17  
3809152000

FEB 08 2023

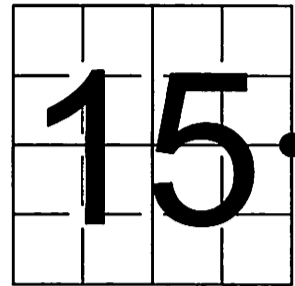
KYLE J. FRANSON  
REGISTER OF DEEDS

**U S PUBLIC LAND SURVEY MONUMENT RECORD - ADDENDUM**

NOTE: This form is intended and designed to fulfill all requirements of Wisconsin Administrative Code, Chapter A-E 7.08 U.S. Public Land Survey Monument Record (3) (a-i)

A-E 7.08(3)(a) Identity of corner  
EAST 1/4 CORNER OF SECTION 15  
TOWNSHIP 38 NORTH  
RANGE 09 EAST OF THE 4TH PM  
TOWN OF SUGAR CAMP,  
COUNTY OF ONEIDA

WISCORS - ONEIDA COUNTY  
N: 217,467.388 USft (217,467.483)  
E: 282,658.196 USft (282,658.228)  
Datum: NAD83 (2011)  
GNSS Method RTN - Direct  
GNSS Control WISCORS VRS



The coordinate value shown has been verified by the average of two or more GPS observations at a markedly different time. Values shown in parenthesis, are previously published measurements.

A-E 7.08(3)(b) Description of any record evidence, monument evidence, occupational evidence, testimonial evidence, or any other material evidence.

Original Surveyor: William E. Daugherty

Date of Original Survey	Commenced:	September 14, 1863	Original Accessories:			
	Completed:	September 21, 1863	Sugar	10	S 34° W	12
			Maple	14	S 77° E	21

See Previous Monument Record: Index No. L-17 - April 9, 1998 - Surveyor 0841 - William C. Rohde - Thence:

October 2, 2001 - Surveyor 1523 - Todd J. Loftus - indicates this position as "found R.R. spike" on O.C.S. Map C1849.

May 2, 2007 - Surveyor 2070 - Michael E. Weber - indicates this position as "set steel survey pin" on O.C.S. Map B6597.

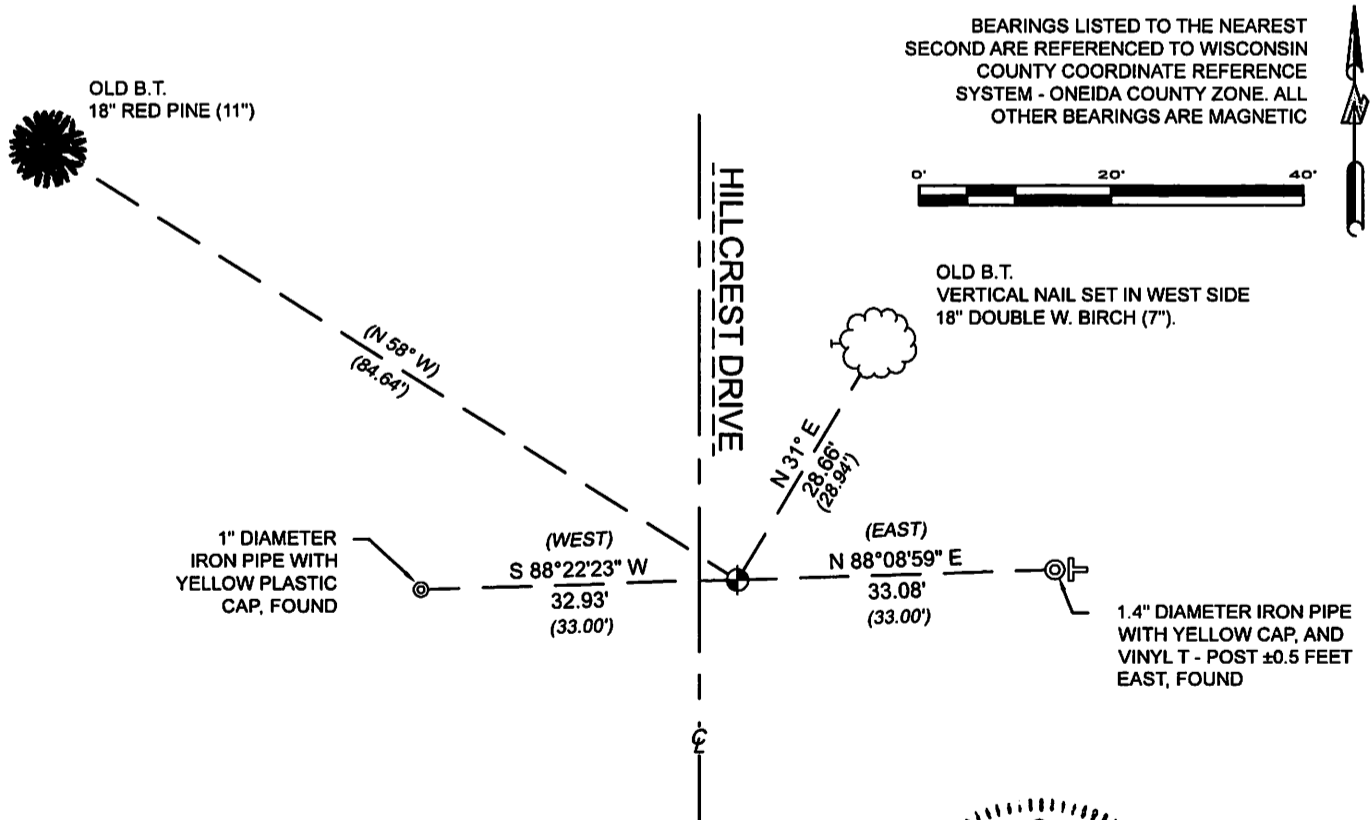
December 20, 2010 - Surveyor 1523 - Todd J. Loftus - indicates this position as "subdivisional monument found" on O.C.S. Map B7391.

April 17, 2020 - Surveyor 2439 - Charles L. Oleinik - indicates this position as "found spike" on O.C.S. Map A3611.

June 01, 2022 - At the request of Oneida County Land Information, I found: a survey marker spike with a cut "+" in the top, ±4 feet east of Hillcrest Drive centerline. I also found 4 of Rohde's reference monuments established as noted on U.S. Public Land Survey Monument Record L-17.

A-E 7.08(3)(f) I accept this monument as a FOUND PERPETUATED LOCATION OF THE CORNER and established 0 new witnesses as shown below.

A-E 7.08(3)(c)(d)(e)(h) Plan view of corner with references to at least 4 witness monuments. If in disagreement with previously established corner, show the distances between the two corners and also indicate the ties to the disputed. The directions and distances to other public land survey corners used as evidence or used for determining the corner location.

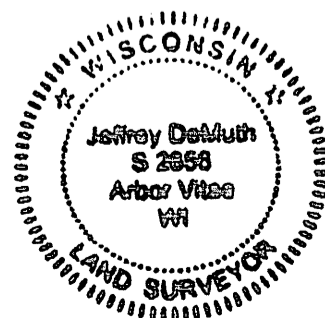


A-E 7.08(3)(i) I, Jeffrey L. DeMuth, Professional Land Surveyor No. S-2656, hereby certify that the corner location on this record was determined by me or under my direction and control and that this U.S. Public Land Survey Monument Record is correct and complete to the best of my knowledge, and belief

*Jeffrey L. DeMuth*

January 17, 2023  
DATE

SIGNATURE



43809152000