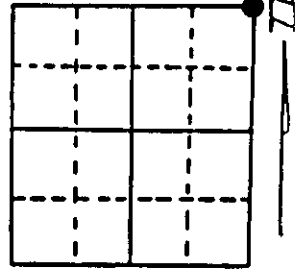


U.S. PUBLIC LAND SURVEY MONUMENT RECORD

Note: This form is intended and designed to fulfill all requirements of Wisconsin Administrative Code, Chapter A-E 7.08 U.S. Public Land Survey Monument Record (3) (a) (b) (c) (d) (e) (f) (g) (h) (i). An additional sheet may be added if necessary to conform with said requirements.

(a) Corner location: Township 38 North
 Range 9 East/West



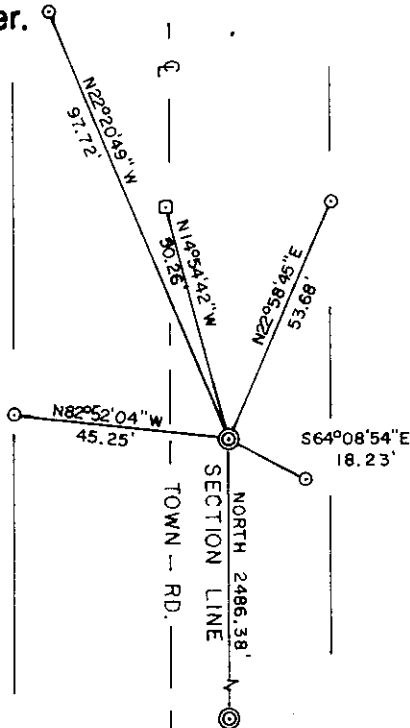
Section 21

Town/City/Village Sugar Camp
 County Oneida

(b) (f) (g) (h) Description of monument found at this corner and if it was accepted, state all evidence (material, testimonial, occupational, plats, records, other monuments) used as a basis for accepting. If not accepted or if nothing was found, state evidence used as basis for establishing location. If reestablished through lost corner proportionate methods, indicate all monuments, distances and directions used to establish. Indicate type of monument found or set and sign post.

- 1863 - William Daugherty - set post at 80 ch.
 Original B.T.'s Yellow Pine 20" N73°W 26 lks.
 Yellow Pine 20" S75°W 25 lks.
- 1895 - Dorr subdivides section. Notes distance from E 1/4 corner to be 2487.54 feet. Our measurement to this position - 2468.38 feet from E 1/4 corner position.
- 1957 - Hal Berndt - Notes located post at this position falls on East side of road near big rock.
- 1962 - Loftus - (Map A407) Surveys and monuments plat using East line of Section 21 as the West boundary of plat. Shows ties to 1/8 corner and East 1/4.
- 1989 - Soder - Uses Loftus plat and close agreement with calls of prior surveys in Section 21 to establish a position for the NE Section corner of Section 21. (Map B1951)
- 1998 - Rhode - Files U.S. Public Land Survey Monument Record form (over)

(c) (d) (e) Plan view of corner with ties to at least 4 witness monuments. If in disagreement with previously established corner, show the distances between the two corners and also indicate the ties to the disputed corner.



BEARINGS ARE BASED ON THE EAST LINE OF SECTION 23 BEARING NORTH AS USED IN PREVIOUS SURVEYS.

SCALE: 1" = 40'

Note: Plastic sign post set 3' East of corner.

- ⊙ 2-1/2" x 3' ONEIDA CO. ALUMINUM CAPPED MONUMENT.
- 1" DIA. IRON PIPE REF. MON.
- ⊠ P.K. NAIL OVER IRON ROD. (DISPUTED CORNER)

(i) I, Kip W. Soder R.L.S. #1731
 (type or print name) certify that the corner location on this record was determined by me or under my direction and control and that this U.S. Public Land Survey Monument Record is correct and complete to the best of my knowledge and belief.

Kip W. Soder
 Signature

5/09/01
 Date



Index No. N 13

Stamp

3809160000

accepting an iron rod found in the centerline of the Town Road. This is the disputed corner shown on the face of this form. Rhode also sets iron pipe reference monuments.

2001 - Soder - Discrepancy in corner positions is noted. Oneida County 2½" X 36" aluminum capped monument stamped to identify corner is set at position shown on Map # B1951. Corner falls 3' East of pavement of Town Road. Plastic sign post is set 3' East of set corner which is 6" below ground level. Measurements are taken to reference monuments set by Rhode and are used to reference set corner.

