

U.S. PUBLIC LAND SURVEY MONUMENT RECORD

Note: This form is intended and designed to fulfill all requirements of Wisconsin Administrative Code, Chapter A-E 7.08 U.S. Public Land Survey Monument Record (3) (a) (b) (c) (d) (e) (f) (g) (h) (i). An additional sheet may be added if necessary to conform with said requirements.

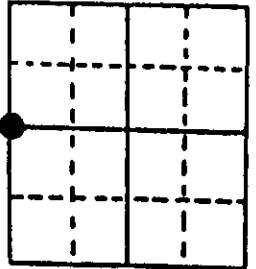
(a) Corner location: Township 38 North Corner: West 1/4 Corner

Section 15 Range 9 East Original Surveyor: William Daugherty

Town/City/Village Sugar Camp

Original B.T.'s: 10" Tam N09°E 11 lks
10" Tam S42°W 10 lks

County Oneida



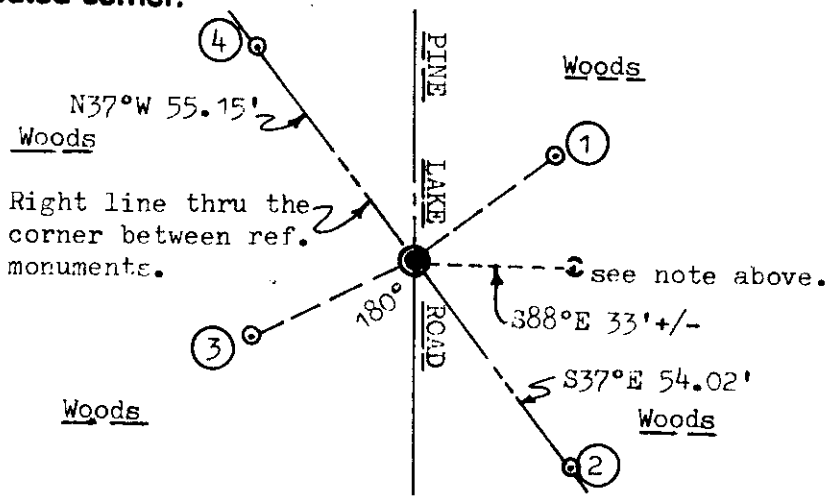
Original Survey Date: September 1863 ● Location

(b) (f) (g) (h) Description of monument found at this corner and if it was accepted, state all evidence (material, testimonial, occupational, plats, records, other monuments) used as a basis for accepting. If not accepted or if nothing was found, state evidence used as basis for establishing location. If reestablished through lost corner proportionate methods, indicate all monuments, distances and directions used to establish. Indicate type of monument found or set and sign post.

Found and accepted a railroad spike undisturbed and 2" below existing blacktop roadway mat surface at this corner location. All original GLO survey corner evidence is now obliterated due to roadway construction. In 1975, Norman Loftus set the railroad spike at this corner as noted on his Plat of Survey No. B-240 filed in Oneida County survey records, and marked new BT's: a 5" Balsam N89°E 32.55', now dead and fallen NE with face blazes and scribing plain, and an 8" Pr S56°W 37.15', which I found as a 13" Pr with upper face blaze shut but plain and lower face blaze open to grade with scribing plain and used for new ties below. The corner falls about 1 foot East of the blacktop pavement centerline. This recovery was completed April 13, 1998 and witnessed by Darwin Larson, local area resident. No other corner evidence was noted by inspection within nearby area, so I accepted this location per previous land survey of record and common report.

I set a standard white poly 'T' corner marker post 6" NW of the NW iron pipe reference monument set per ties below.

(c) (d) (e) Plan view of corner with ties to at least 4 witness monuments. If in disagreement with previously established corner, show the distances between the two corners and also indicate the ties to the disputed corner.



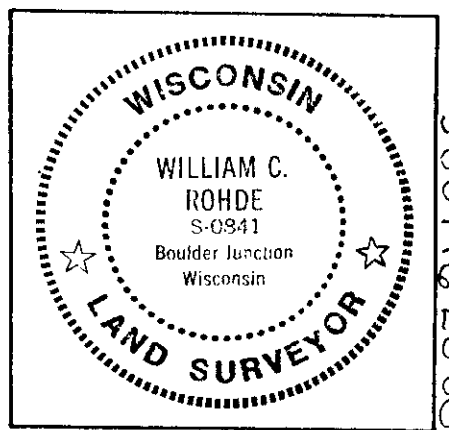
Witness Monument Ties:

- ① New BT 10" Cedar N53°E 36.50'.
- ② 1" dia. by 36" long iron pipe set with Reference Mark plug in top on right line thru the corner monument.
- ④
- ③ Record BT 13" Pr S64°W 37.37'.

Note: I set red stake flags on wire in top of each Ref. Mon. poly cap.

Unless otherwise indicated, all BT witness monument ties are to a 1/4" dia. by 2.5" long PK nail with 1.25" dia. steel washer set in unblazed right face bark; and a PK nail with 2" dia. steel washer stamped BT also set in unblazed front face bark of each BT at DBH. All previous corner recovery notes from Wisconsin DNR and/or Oneida County survey records.

Scale: 1" = 40'



Index No. L-13
3809162000

(i) I, William C. Rohde, RLS 841
(type or print name) certify that the corner location on this record was determined by me or under my direction and control and that this U.S. Public Land Survey Monument Record is correct and complete to the best of my knowledge and belief.

William C. Rohde Signature April 14, 1998 Date