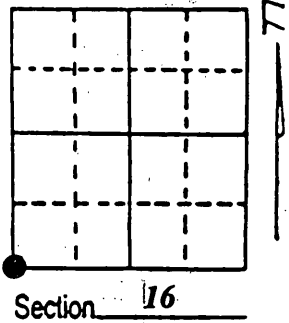


U.S. PUBLIC LAND SURVEY MONUMENT RECORD

Note: This form is intended and designed to fulfill all requirements of Wisconsin Administrative Code, Chapter A-E 7.08 U.S. Public Land Survey Monument Record (3) (a) (b) (c) (d) (e) (f) (g) (h) (i). An additional sheet may be added if necessary to conform with said requirements.

(a) Corner location: Township 38 North
 Range 9 East/West
 Town/City/Village SUGAR CAMP
 County ONEIDA



(b) (f) (g) (h) Description of monument found at this corner and if it was accepted, state all evidence (material, testimonial, occupational, plats, records, other monuments) used as a basis for accepting. If not accepted or if nothing was found, state evidence used as basis for establishing location. If reestablished through lost corner proportionate methods, indicate all monuments, distances and directions used to establish. Indicate type of monument found or set and sign post.

*Sept. 1863, William E. Daugherty ran North from Section corners 20, 21, 28, 29 and set Section Corner Post at 80.00 chains
 BTs. Hemlock 12, S 11° E, 32 : Birch 10, N 55° W 20.*

*1892 B.F. Dorr ran East line of section 17, 75.10 chains, BTs. For Southeast Section Corner
 Tamarack 6, N 6 1/2° E 14 1/2 : Spruce 2 1/2, South 19 1/2*

*11/12/1957 Berndt set a W.C.D. monument by double proportion and made BTs.
 Pine white 3, S 62° W 0.47ch : Pine Norway 7, N 75° 0.339 1/2 ch.*

Jan. 1989 Kip Soder found the W.C.D. 2" capped pipe while subdividing section 21

Feb. 1999 Thomas Radenz map of survey shows he found a 2" iron pipe with aluminum cap at the same location as the Soder survey while further subdividing sections 20 & 21.

While working in Section 16 I found the W.C.D. capped 2" iron pipe about 2 feet above surface bent slightly southerly and remains of an old wood post on south side of pipe. The corner appears to be in the same location as shown on the Soder & Radenz surveys. I also discovered that the section corner is approximately 2 chains short from the West 1/4 corner section 16 and approximately 2 chains long from the West 1/4 corner section 21 using Berndt's information of the corner location. I made new Bts. Set metal tags and a steel fence post and referenced as shown below.

REGISTER OF DEEDS OFFICE
 ONEIDA COUNTY
 FILED

APR 19 2013

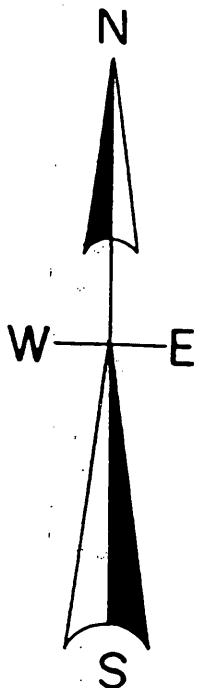
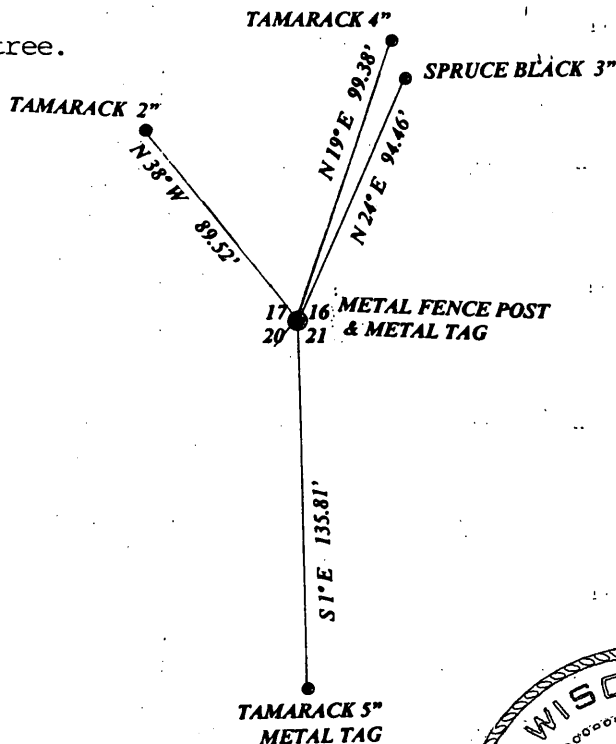
AT _____ O'CLOCK _____ M
 KYLE J. FRANSON
 REGISTER OF DEEDS

(c) (d) (e) Plan view of corner with ties to at least 4 witness monuments. If in disagreement with previously established corner, show the distances between the two corners and also indicate the ties to the disputed corner.

Distances measured to spike in tree.
 Bearings taken by Hand Compass.
 No scale.

NOTE- researched for Berndt's BTs.
 but could not find any evidence of them.

corner location fall's in marsh area.



(i) I, Todd J. Loftus
 (type or print name) certify that the corner location on this record was determined by me or under my direction and control and that this U.S. Public Land Survey Monument Record is correct and complete to the best of my knowledge and belief.

Todd J. Loftus
 Signature

Feb 28, 2013
 Date



Index No. N 9

3809170000
 Stamp