

## U.S. PUBLIC LAND SURVEY MONUMENT RECORD

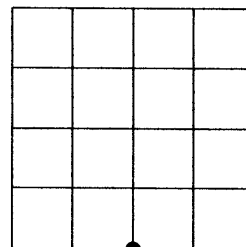
Note: This form is intended and designed to fulfill all requirements of the Wisconsin Administrative Code, Chapter A-E 7.08 U.S. Public Land Monument Record (3)(a)(b)(c)(d)(e)(f)(g)(h)(i). An additional sheet may be added if necessary to conform with said requirements.

**(a) CORNER LOCATION:**

south quarter of Section 18  
Township 38 North  
Range 9 East  
Town of Newbold  
County of Oneida

**COORDINATES**

North:  
East:  
Control Station:  
Latitude:  
Longitude:  
Datum Method



SECTION 18

**(b) HISTORY OF ORIGINAL CORNER ESTABLISHMENT**

Original Surveyor: W.E. Daugherty  
Date of Survey: Commenced, September 1863  
Completed, September, 1863

Original B.T.'S  
Birch 7" dia. N37°W 44 links  
Aspen 8" dia. S70°E 57 links

**(f)(g)(h) DESCRIPTION OF MONUMENT FOUND AT THIS CORNER AND IF IT WAS ACCEPTED, STATE ALL EVIDENCE (MATERIAL, TESTIMONIAL, OCCUPATIONS, PLATS, RECORDS, OTHER MONUMENTS) USED AS A BASIS FOR ESTABLISHING LOCATION. IF NOT ACCEPTED IF NOTHING WAS FOUND, STATE EVIDENCE USED AS BASIS FOR ESTABLISHING LOCATION. IF REESTABLISHED THROUGH LOST CORNER PROPORTIONATE METHODS, INDICATE ALL MONUMENTS, DISTANCES AND DIRECTIONS USED TO ESTABLISH. INDICATE TYPE OF MONUMENT AND SIGN POST FOUND OR SET.**

*Original Surveyor: W.E. Daugherty, east corrected between Sections 18 and 19 at 41.23 chains set quarter post.  
B.F. Dorr: 1/19/1896, notes south quarter post and the following bearing trees, Spruce 6" dia. N81W 27 1/3 links and Tamarack 12" dia. S12 1/2W 21 3/4 links.  
D.H. Vaugh: 10/02, from southwest corner run east var 3, at 44.06 chains fell 2.47 chains south of Dorr's quarter post.  
E.F. Kowalke: 12/56, at 44.40 chains east of southwest corner set brass capped iron pipe and made the following bearing trees, Tamarack 4" dia. S40W 6.0' and Tamarack 4" dia. S50E 20.1'  
Sy Poskie: 10/28/75, on survey map notes corner to be a W.C.D. brass capped iron pipe.  
S. L. Foltz: 10/23/87 & 9/8/94, shows corner to be a W.C.D. brass capped iron pipe.  
Michael L. Oestreich: 10/13/04, recovered a W.C.D. brass capped iron pipe, and made ties as shown in the plan below to existing bearing trees.*

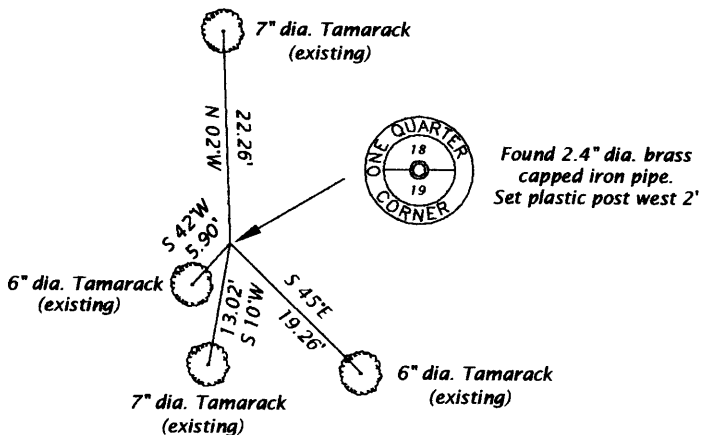
**(c)(d)(e) PLAN VIEW OF CORNER WITH TIES TO AT LEAST 4 WITNESS MONUMENTS. IF IN DISAGREEMENT WITH PREVIOUSLY ESTABLISHED CORNER, SHOW THE DISTANCE BETWEEN THE TWO CORNERS AND ALSO INDICATE THE TIES TO THE DISPUTED CORNER.**

Bearings magnetic



Scale 1" = 20'

Measurement to trees taken to 10d aluminum nail in the side of tree.



(i) I, MICHAEL L. OESTREICH, REGISTERED LAND SURVEYOR NO. S-2118 HEREBY CERTIFY THAT THE CORNER LOCATION ON THIS RECORD WAS DETERMINED BY ME OR UNDER MY DIRECTION AND CONTROL AND THAT THIS U.S. PUBLIC LAND SURVEY MONUMENT RECORD IS CORRECT AND COMPLETE TO THE BEST OF MY KNOWLEDGE AND BELIEF.

*Michael L. Oestreich* 12/6/04  
SIGNATURE DATE



INDEX NO. 2 3

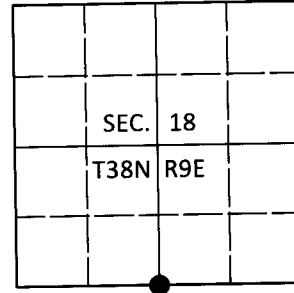
3809180020

# U.S. PUBLIC LAND SURVEY MONUMENT RECORD

Note: This form is intended and designed to fulfill all requirements of Wisconsin Administrative Code, Chapter A-E 7.08 U.S. Public Land Survey Monument Record (3)(a-i).

(a) CORNER LOCATION  
 1/4 Cor. of Secs. 18 & 19  
 Township 38 North  
 Range 9 East of the 4th P.M.  
 Town of Sugar Camp  
 County of Oneida

WISCRS - Oneida County  
 N: 214,552.08 USft  
 E: 263,214.59 USft  
 Datum: NAD 83(2011)  
 GNSS Method: RTN - Direct  
 GNSS Control: WISCORS VRS



(b) HISTORY OF ORIGINAL CORNER ESTABLISHMENT

Original Surveyor: \_\_\_\_\_ Original Accessories: See previous monument record(s)  
 Date of Survey Commenced: \_\_\_\_\_ Completed: \_\_\_\_\_

(b)(f)(g)(h) Description of monument found at this corner and if it was accepted, state all evidence (material, testimonial, occupational, plats, records, other monuments) used as a basis for accepting. If not accepted or if nothing was found, state evidence used as basis for establishing location. If re-established through lost corner proportionate methods, indicate all monuments, distances and directions used to establish. Indicate type of monument and sign post found or set.

*This is a perpetuation of the following monument record(s) that comprise a complete history of the corner:*

*Dec. 6, 2004: USPLS Monument Record No. 3809180020 by Michael L. Oestreich, PLS*

*July 30, 2020: I found and accepted the record monument, a 2.4" diam. iron pipe with a 3.0" diam. WCD brass cap projecting 2" above the bog surface. I found or established accessories as shown below. I found a white vinyl sign post bearing West, 0.8 ft.*

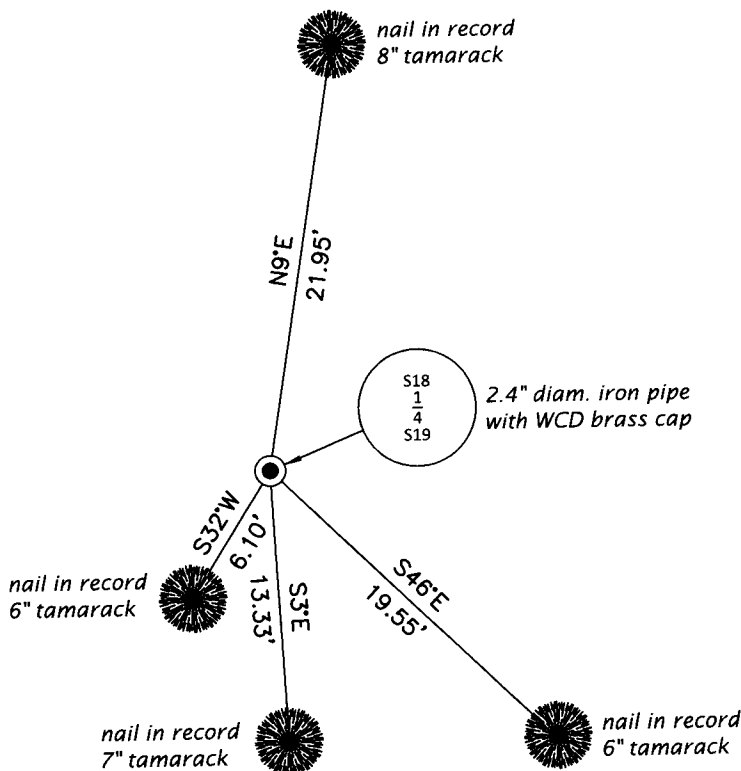
*The coordinate value shown has been verified by at least one of the following methods: 1) comparison to a previously GPS determined published value; 2) the value is the average of two or more GPS observations at a markedly different time; 3) one or more distances were measured back to the GPS observed corner from temporary GPS observed offset locations.*

REGISTER OF DEEDS OFFICE  
 ONEIDA COUNTY  
 FILED

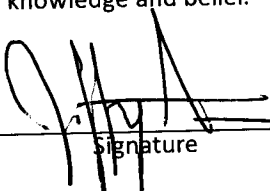
SEP 04 2020

KYLE J. FRANSON  
 REGISTER OF DEEDS

(c)(d)(e) Plan view of corner with ties to at least 4 witness monuments. If in disagreement with previously established corner, show the distances between the two corners and also indicate the ties to the disputed.



(i) I, Jeffrey W. Austin, Professional Land Surveyor No. S-1885, hereby certify that the corner location on this record was determined by me or under my direction and control and that this U.S. Public Land Survey Monument Record is correct and complete to the best of my knowledge and belief.

  
 \_\_\_\_\_  
 Signature

AUG 27, 2020  
 \_\_\_\_\_  
 Date

3809180020 (INDEX NO. N-3)