

U.S. PUBLIC LAND SURVEY MONUMENT RECORD

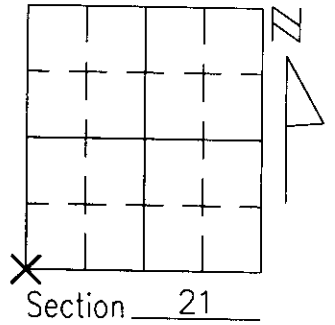
Note: This form is intended and designed to fulfill all requirements of Wisconsin Administrative Code, Chapter A-E 5.02, U.S. Public Land Survey Monument Record (3)(a)(b)(c)(d)(e)(f)(g)(h)(i). An additional sheet may be added if necessary to conform with said requirements.

(a) Corner location: Township 38 North

Range 9 East

Town/City/Village SUGAR CAMP

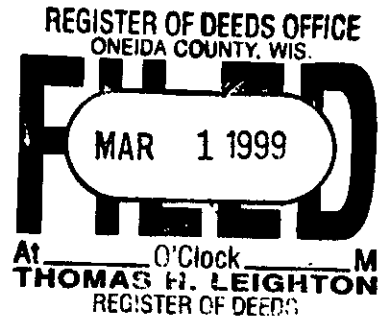
County ONEIDA



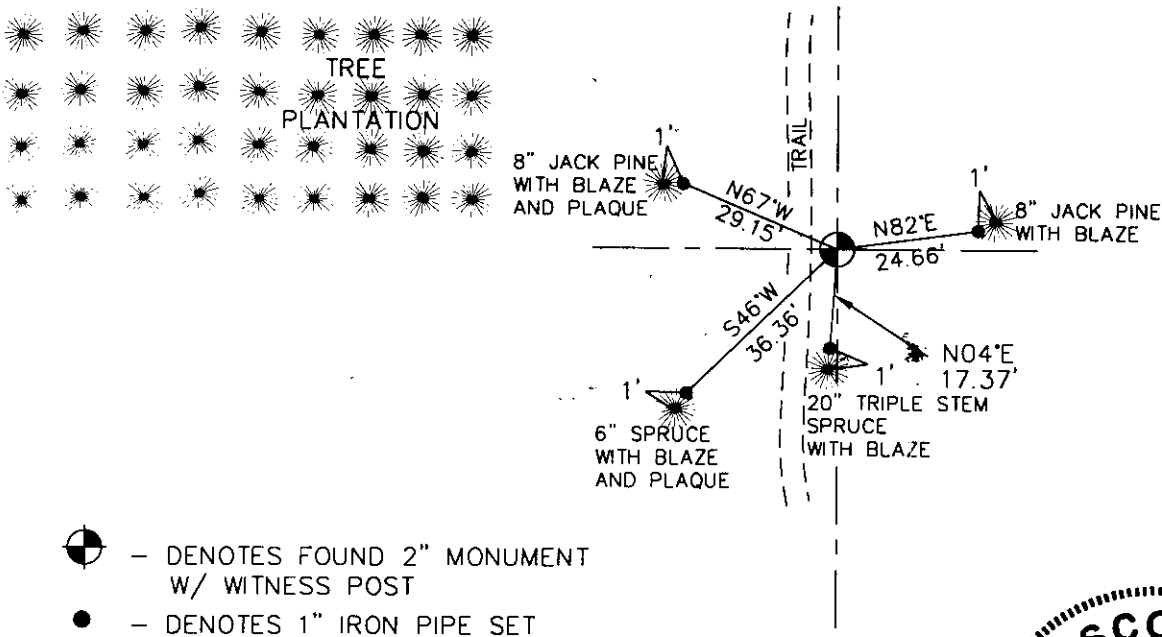
(b)(f)(g)(h) Description of monument found at this corner and if it was accepted, state all evidence (material, testimonial, occupational, plats, records, other monuments) used as a basis for accepting. If not accepted or if nothing was found, state evidence used as basis for establishing location. If reestablished through lost corner proportionate methods, indicate all monuments, distances and directions used to establish.

ORIGINAL P.L.S. SURVEY: WOOD POST SET WITH 30" WHITE PINE N6°W, 20 LKS. AND 6" BIRCH S68°W, 13 LKS. AS BEARING TREES. NO EVIDENCE OF ORIGINAL MONUMENTATION FOUND.

I FOUND A 2" IRON PIPE WITH WI CONSERVATION DEPARTMENT CAP AT THE CORNER. THIS MONUMENT HAS BEEN ACCEPTED BY OTHERS AND AS THE CORNER OF RECORDED. I ACCEPTED THIS AS THE BEST AVAILABLE EVIDENCE OF THE ORIGINAL LOCATION OF THE CORNER.

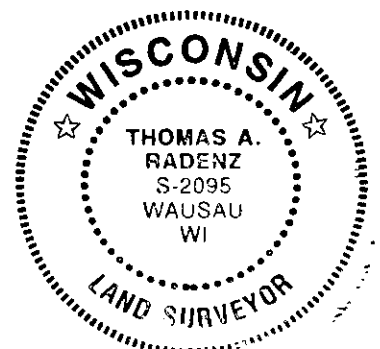


(c)(d)(e) Plan view of corner with ties to at least 4 witness monuments. If in disagreement with previously established corner, show the distances between the two corners and also indicate the ties to the disputed corner.



(i) I, Thomas A. Radenz, Wisconsin Registered Land Surveyor, certify that the corner location on this record was determined by me or under my direction and control and that this U.S. Public Land Survey Monument Record is correct and complete to the best of my knowledge and belief.

Thomas A. Radenz Signature 2/13/99 Date



Index No. R 9
3809200000