

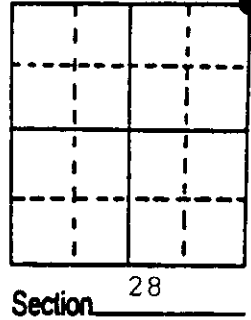
U.S. PUBLIC LAND SURVEY MONUMENT RECORD

Note: This form is intended and designed to fulfill all requirements of Wisconsin Administrative Code, Chapter A-E 7.08 U.S. Public Land Survey Monument Record (3) (a) (b) (c) (d) (e) (f) (g) (h) (i). An additional sheet may be added if necessary to conform with said requirements.

(a) Corner location: Township 38 North
 Range 9 East/West

Town/City/Village Sugar Camp

County Oneida



(b) (f) (g) (h) Description of monument found at this corner and if it was accepted, state all evidence (material, testimonial, occupational, plats, records, other monuments) used as a basis for accepting. If not accepted or if nothing was found, state evidence used as basis for establishing location. If reestablished through lost corner proportionate methods, indicate all monuments, distances and directions used to establish. Indicate type of monument found or set and sign post.

1863 - William Daugherty - Set wood post.
 Original B.T.'s Tamarack 10" S 65° E 771ks
 Spruce 8" N 74° E 1211ks

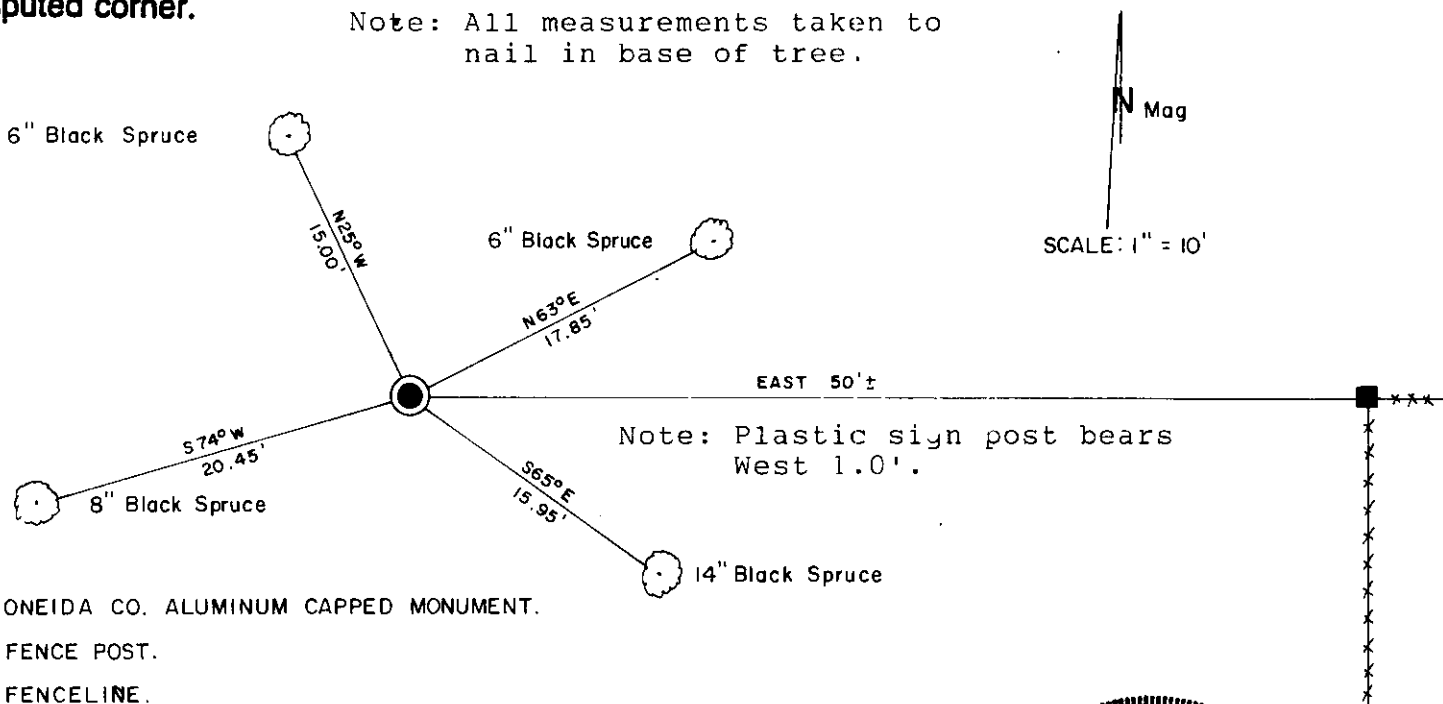
1894 - Door - (Book 12 P. 16, Book 22 P. 137). Finds Daugherty's wood post at this position but does not mention whether he does anything to perpetuate corner.

1955 - RIPC0 surveyors (Loftus, Alexander & Metcher) note iron pipe at the corner position approximately 300' south of logging road and on the edge of roadbed through swamp.

1999 - Recovered iron pipe at position. Falls on west side of old roadbed, 300' south of logging road, and approximately 50' west of fence corner. Set Oneida County aluminum capped monument (over)

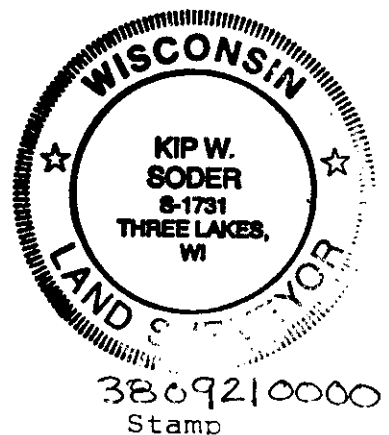
(c) (d) (e) Plan view of corner with ties to at least 4 witness monuments. If in disagreement with previously established corner, show the distances between the two corners and also indicate the ties to the disputed corner.

Note: All measurements taken to nail in base of tree.



(i) I, Kip W. Soder R.L.S. #1731
 (type or print name) certify that the corner location on this record was determined by me or under my direction and control and that this U.S. Public Land Survey Monument Record is correct and complete to the best of my knowledge and belief.

Kip W. Soder Signature 10/8/99 Date



Index No. R-13

stamped to identify corner flush with old roadbed. Made new B.T.'s
and placed plastic signpost 1.0' west of corner.

REGISTER OF DEEDS OFFICE
ONEIDA COUNTY, WIS.
FILED
OCT 29 1999
At _____ O'Clock _____ M
THOMAS H. LEIGHTON
REGISTER OF DEEDS