

In 1962 Norm Loftus perpetuated corner by accepting an iron pipe at the corner position. Using this position Loftus ties Mud Lake Sub-division to the north, and the Section corner to the south to the East 1/4 of Section 21. Using the Loftus survey and measurements made subdividing Section 21 the position was reestablished.

REGISTER OF DEEDS OFFICE
ONEIDA COUNTY, WIS
JUN - 1998
At _____ O'Clock
THOMAS H. LEIGHTON
REGISTER OF DEEDS

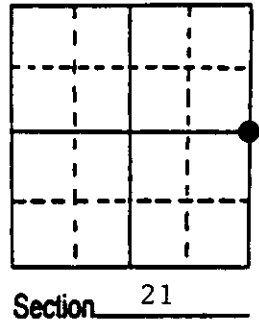
U.S. PUBLIC LAND SURVEY MONUMENT RECORD

Note: This form is intended and designed to fulfill all requirements of Wisconsin Administrative Code, Chapter A-E 7.08 U.S. Public Land Survey Monument Record (3) (a) (b) (c) (d) (e) (f) (g) (h) (i). An additional sheet may be added if necessary to conform with said requirements.

(a) Corner location: Township 38 North
 Range 9 East/West

Town/City/Village Sugar Camp

County Oneida



(b) (f) (g) (h) Description of monument found at this corner and if it was accepted, state all evidence (material, testimonial, occupational, plats, records, other monuments) used as a basis for accepting. If not accepted or if nothing was found, state evidence used as basis for establishing location. If reestablished through lost corner proportionate methods, indicate all monuments, distances and directions used to establish. Indicate type of monument found or set and sign post.

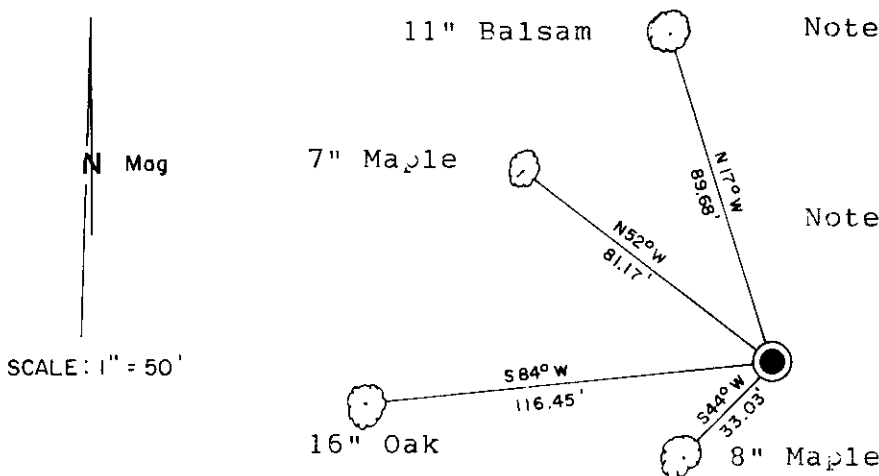
1863 - William Daugherty - set post.
 Original B.T.'s Birch 7" N 70° W 291ks
 Birch 10" S 23° E 471ks

1962 - Norm Loftus accepts iron pipe at this position while creating Mud Lake Subdivision. The NE corner of Section 21 as well as the SE corner of Section 21 are tied to the plat.

1998 - Using Loftus' ties to Mud Lake Subdivision and our own section Subdivision the corner was reestablished. Set Oneida County Aluminum capped monument stamped to identify the corner. Made new B.T.'s and set plastic sign post 1.0' east of corner.

1999 - Due to stakeout error this corner was reset in its proper location and new ties were made to bearing trees.

(c) (d) (e) Plan view of corner with ties to at least 4 witness monuments. If in disagreement with previously established corner, show the distances between the two corners and also indicate the ties to the disputed corner.



Note: All measurements taken to nail in base of tree.

Note: Plastic sign post bears East 1.0'.

● ONEIDA CO. ALUMINUM CAPPED MONUMENT.

(i) I, Kip W. Soder R.L.S. #1731
 (type or print name) certify that the corner location on this record was determined by me or under my direction and control and that this U.S. Public Land Survey Monument Record is correct and complete to the best of my knowledge and belief.

Kip W. Soder 10/8/99
 Signature Date



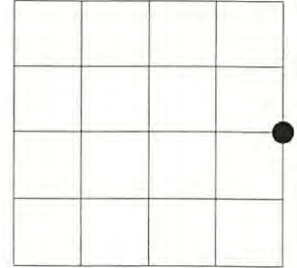
3809212000 Stamp

Index No. P-13

U.S. PUBLIC LAND SURVEY MONUMENT RECORD

NOTE: This form is intended and designed to fulfill all requirements of Wisconsin Administrative Code, Chapter A-E 7.08 U.S. Public Land Survey Monument Record (3)(a)(b)(c)(d)(e)(f)(g)(h)(i). An additional sheet may be added if necessary to conform with said requirements.

(a) Corner location: Township 38 North
 Range 9 East
 Town of Sugar Camp
 Oneida County, Wisconsin



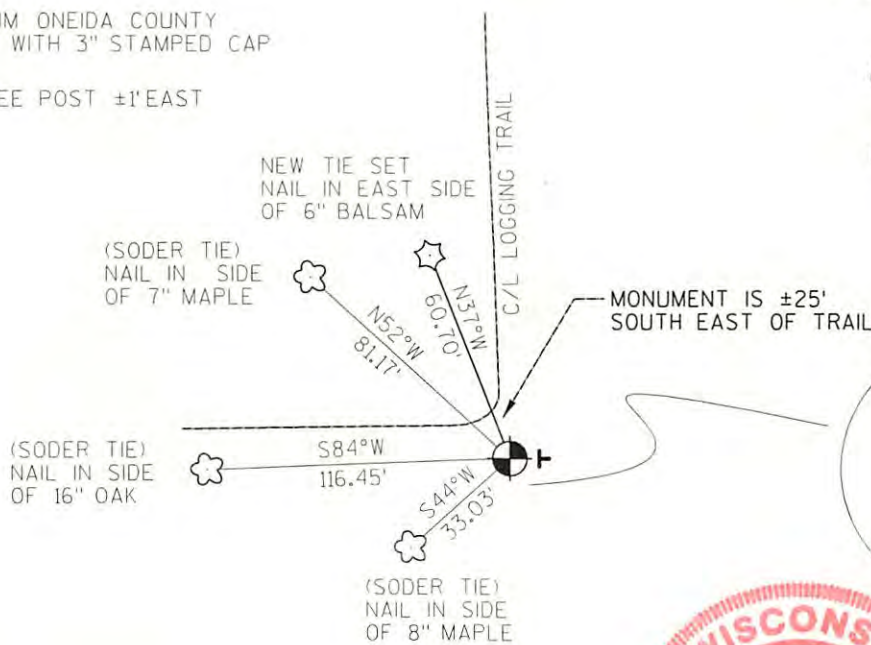
Section 21

(b)(f)(g)(h) Description of monument found at this corner and if it was accepted, state all evidence (material, testimonial, occupational, plats, records, other monuments) used as a basis for accepting. If not accepted or if nothing was found, state evidence used as basis for establishing location. If reestablished through lost corner proportionate methods, indicate all monuments, distances and directions used to establish. Indicate type of monument found or set and sign post.

- 1863 - William Dougherty set post
 Original BT's: Birch 7" N 70°W 29lks
 Birch 10" S 23°E 47lks
- 1962 - Norm Loftus accepts iron pipe at this position while creating Mud Lake Subdivision. The NE corner of Section 21 as well as the SE corner of Section 21 are tied to the plat.
- 1998 - Kip Soder uses Loftus's ties to Mud Lake Subdivision and his own section subdivision to re-establish corner. An Oneida County Aluminum Monument is set. Plastic sign post is set 1' East of corner.
- 1999 - Kip Soder resets corner in proper location after stakeout error previously. New ties were made to bearing trees.
- 2008 - Found 3" Oneida County Aluminum Monument. Found 3 of Soder's ties and re-established 4th as shown below.

(c)(d)(e) Plan view of corner with ties to at least 4 witness monuments. If in disagreement with previously established corner, show the distances between the two corners and also indicate the ties to the disputed corner.

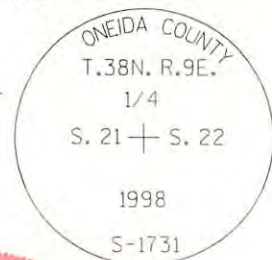
- 2" ALUMINUM ONEIDA COUNTY MONUMENT WITH 3" STAMPED CAP
- PLASTIC TEE POST ±1' EAST



REGISTER OF DEEDS OFFICE
 ONEIDA COUNTY
 FILED

APR 29 2022

KYLE J. FRANSON
 REGISTER OF DEEDS



NORTH

(i) I, Jeffrey L. DeMuth, Registered Land Surveyor #S-2656, hereby certify that the corner location on this record was determined by me or under my direction and control and that this U.S. Public Land Survey Monument Record is correct and complete to the best of my knowledge and belief.



Signature

Date 04/11/2008

3809212000

Index No. P-13

