

# U.S. PUBLIC LAND SURVEY MONUMENT RECORD

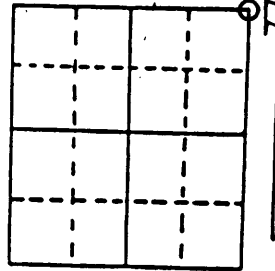
Note: This form is intended and designed to fulfill all requirements of Wisconsin Administrative Code, Chapter A-E 7.08 U.S. Public Land Survey Monument Record (3) (a) (b) (c) (d) (e) (f) (g) (h) (i). An additional sheet may be added if necessary to conform with said requirements.

(a) Corner location: Township 38 North

Range 9 East/West

Town/City/Village SUGAR CAMP

County ONEIDA



Section 27

(b) (f) (g) (h) Description of monument found at this corner and if it was accepted, state all evidence (material, testimonial, occupational, plats, records, other monuments) used as a basis for accepting. If not accepted or if nothing was found, state evidence used as basis for establishing location. If reestablished through lost corner proportionate methods, indicate all monuments, distances and directions used to establish. Indicate type of monument found or set and sign post.

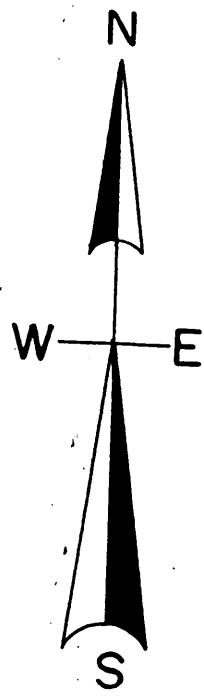
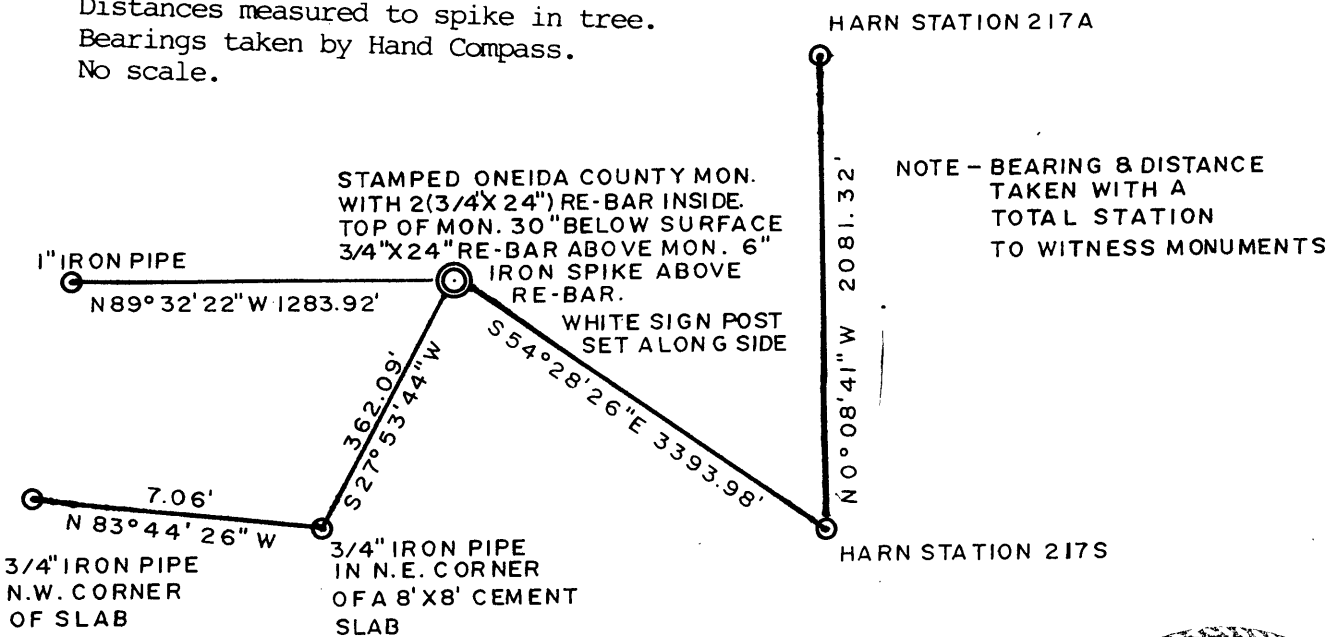
Sept. 1863 William E. Daugherty ran North 80.00 and set section post 22, 23, 26, 27: white Pine 24, S 57 E, 12: Birch 10, N 25 W, 8:

1892 Dorr ran North line of Section 27.

Corner lies in the Cultivated fields of Tamarack Farms. We extended the line from the N 1/4 corner of section 27, equal distance as the West 1/2 being 2567.84 feet and tied to the East line coming from the South. The distance to the E 1/4 corner of Sec. 22 checks out favorably. I set Stamped Oneida County Monument and tied to witness objects.

(c) (d) (e) Plan view of corner with ties to at least 4 witness monuments. If in disagreement with previously established corner, show the distances between the two corners and also indicate the ties to the disputed corner.

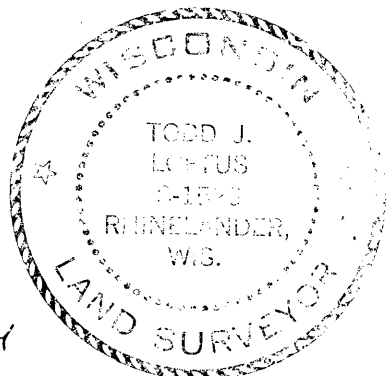
Distances measured to spike in tree.  
Bearings taken by Hand Compass.  
No scale.



(i) I, Todd J. Loftus  
(type or print name) certify that the corner location on this record was determined by me or under my direction and control and that this U.S. Public Land Survey Monument Record is correct and complete to the best of my knowledge and belief.

Todd J. Loftus  
Signature

Feb 18, 2004  
Date



3809220000  
Stamp

Index No. R-17