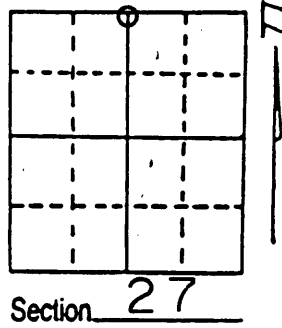


U.S. PUBLIC LAND SURVEY MONUMENT RECORD

Note: This form is intended and designed to fulfill all requirements of Wisconsin Administrative Code, Chapter A-E 7.08 U.S. Public Land Survey Monument Record (3) (a) (b) (c) (d) (e) (f) (g) (h) (i). An additional sheet may be added if necessary to conform with said requirements.

(a) Corner location: Township 38 North
 Range 9 East/West
 Town/City/Village SUGAR CAMP
 County ONEIDA



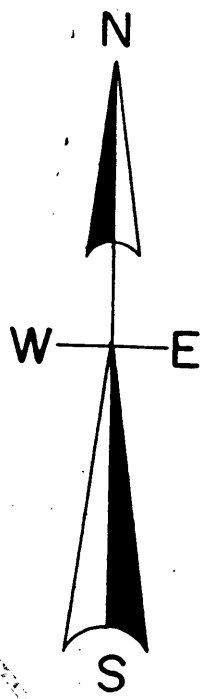
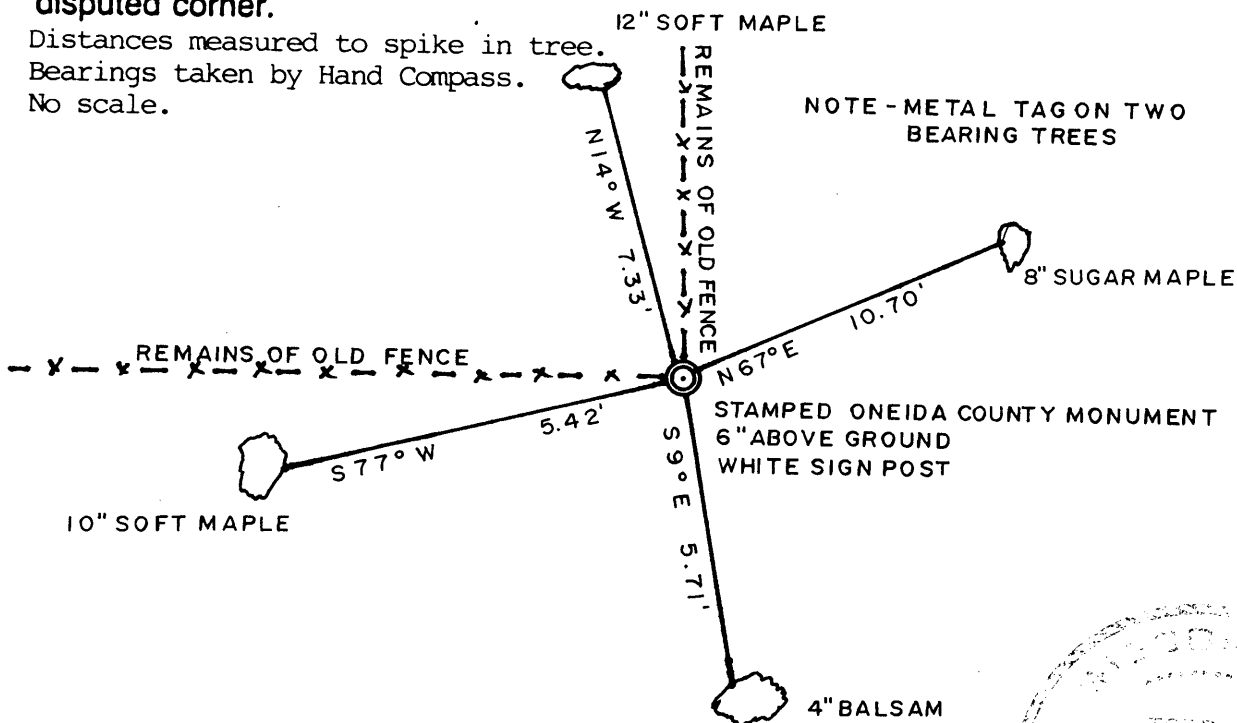
(b) (f) (g) (h) Description of monument found at this corner and if it was accepted, state all evidence (material, testimonial, occupational, plats, records, other monuments) used as a basis for accepting. If not accepted or if nothing was found, state evidence used as basis for establishing location. If reestablished through lost corner proportionate methods, indicate all monuments, distances and directions used to establish. Indicate type of monument found or set and sign post.

Sept. 1863 William E. Daugherty corrected West 40.08 and set quarter section post, Birch 10, N 36 W, 32: Birch 12, S 11 W, 53.

Jan. 1892 B.F. Dorr runs the N-S 1/4 line of Sec. 22 a distance of 77.78 with no ties to a corner shown. The same date in Sec. 27 he shows BTs. to the N 1/4 VIZ. Birch 20, S 73 E, 11: Pine 8, S 11 W, 26. His distance from the NE. corner West at 76.73ch. again no ties. We found remnants of a E-W fence with blazing on trees along same. At 2567.84' from NW. sec. cor. we found remnants of a fence to the North. These fence's correlate well to remnants of fence's along the SWSW also run by Dorr. We agree with the fence's as the best evidence and set a stamped Oneida County Monument for the 1/4 corner accordingly. We noted old growth timber to the North & West of the corner location and old plowed or cultivated land to the South: therefore no evidence of B.F. Dorr's witness trees. The area to the South has now returned to small second growth trees.

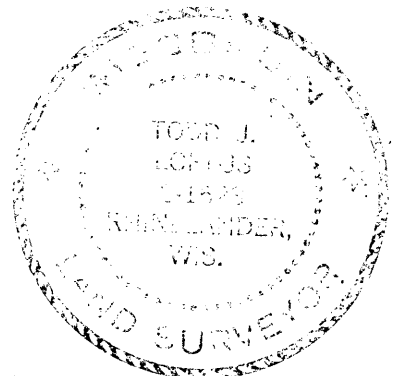
(c) (d) (e) Plan view of corner with ties to at least 4 witness monuments. If in disagreement with previously established corner, show the distances between the two corners and also indicate the ties to the disputed corner.

Distances measured to spike in tree.
 Bearings taken by Hand Compass.
 No scale.



(i) I, Todd J. Loftus
 (type or print name) certify that the corner location on this record was determined by me or under my direction and control and that this U.S. Public Land Survey Monument Record is correct and complete to the best of my knowledge and belief.

Todd J. Loftus Signature Feb 18, 2004 Date



Index No. R-15
3809220020
 Stamp