

Stock No. 26273

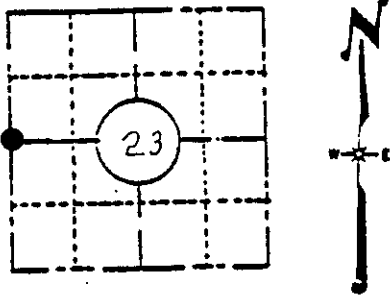
U. S. PUBLIC LAND SURVEY MONUMENT RECORD

INSTRUCTIONS: This record shall show the location of the corner and shall include all of the following nine elements (a through i).

(a) Identify the corner by reference to the U.S. public land survey system.

The W 1/4 of Section 23, Township 38 North, Range 9 East, 4th Principal Meridian.

William E. Daugherty, Deputy Surveyor, September 14th to 21st, 1863. From the south-west corner of Section 23, ran North Var. 8° East and set quarter section post at 40.00 ch. (2,640 ft.)



LOCATION SKETCH

(Location of landmark indicated by "●")

BTs 8" Hemlock N66°W 5 lks. (3.3 ft.)
8" Hemlock S67°E 6 lks. (3.96 ft.)

Original corner found by B.F. Dorr in survey of 1892. New BT by D.H. Vaughan on March 15, 1911.

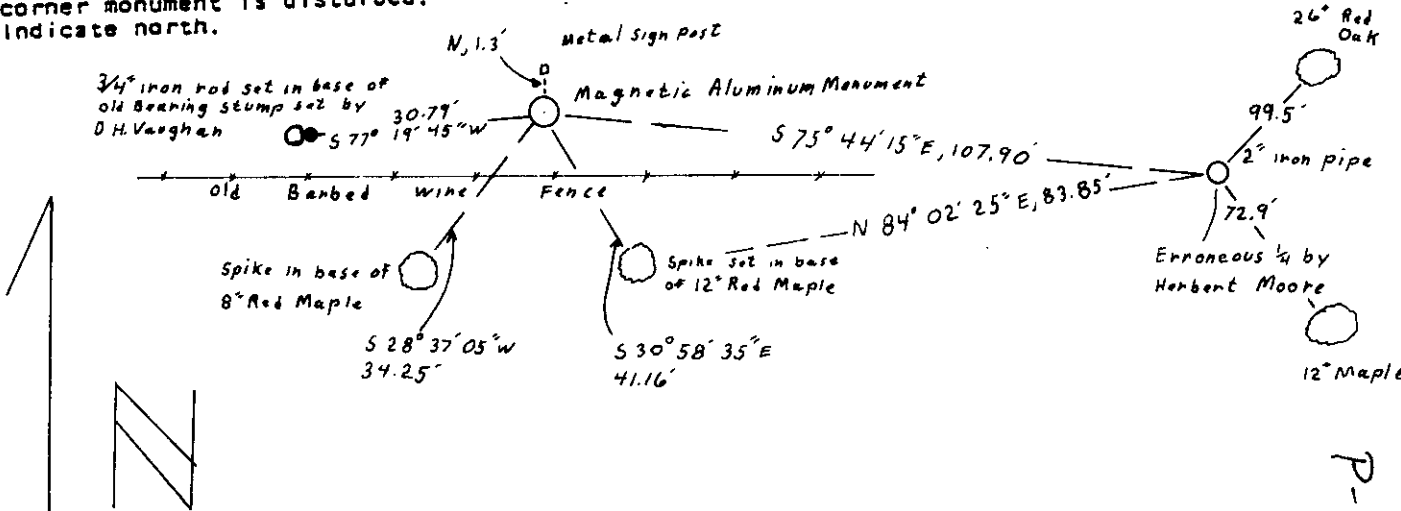
24" White Pine Stump S38°E 35 lks. (23.1 ft.)
28" White Pine Stump S79°W 40 lks. (26.4 ft.)

(b) Describe any record evidence, monument evidence, occupational evidence, testimonial evidence or any other material evidence you considered, and whether the monument was found or placed.

Found remains of wood post by using the bearing stump to the west set by Vaughan. Set 3" aluminum capped monument, 36" long, at this location. The cap is stamped as follows: ONEIDA COUNTY SURVEY MARKER T36N, R9E, 1/4, S22, S23, 1983, S-1040.

(c) In the plan view drawing below, provide reference ties to at least 4 witness monuments, or, if the location is within a municipality, to at least 2 witness monuments. (Witness monuments shall be made of concrete, natural stone, iron or other equally durable material, except wood.) Describe witness monuments.

(d) Show a plan view drawing depicting the relevant monuments and reference ties which is sufficient in detail to enable accurate relocation of the corner monument if the corner monument is disturbed. Indicate north.



(c) Describe any material discrepancy between the location of the corner as restored or reestablished and the location of that corner as previously restored or reestablished by distance and direction. Show the discrepancy on the plan view drawing under (d), above. Show the distances between the corner as previously restored or reestablished and (1) the corner as restored or reestablished, and (2) to at least 2 of the witness monuments shown on the drawing in (d), above.

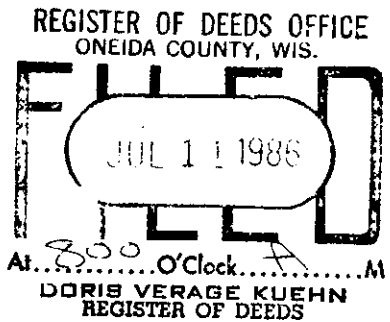
An erroneous quarter corner by Herbert Moore as shown is Certified survey #94 and recorded as Vol. 1, pages 94 & 95. The erroneous corner is a 2" iron pipe and bears S75°44'14"E from the restored corner.

(f) Was the corner restored through acceptance of (1) an obliterated evidence location, or, (2) a found perpetuated location?

The corner was restored by acceptance of a found perpetuated location.

(g&h) Was the corner reestablished through lost corner proportionate methods? If so, show the method, including the directions and distances to other public land survey corners used as evidence or used for proportioning in determining the corner location?

N/A



(i) I, Robert H. Winat (type or print name) certify that the corner location shown on this record was determined by me or under my direction and control and that this U.S. Public Land Survey Monument Record is correct and complete to the best of my knowledge and belief.

Robert H. Winat 12 Oct. 1983
Signature Date

