

Stock No. 26273

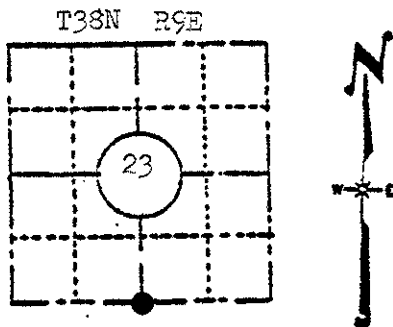
U. S. PUBLIC LAND SURVEY MONUMENT RECORD

INSTRUCTIONS :

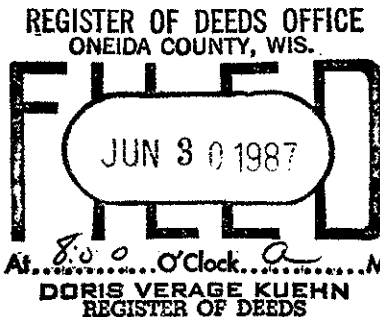
(a) Identify the corner by reference to the U.S. public land survey system.

This record shall show the location of the corner and shall include all of the following nine elements (a through i).  
Original corner set by William E. Daugherty Sept. 1863  
Original BT s

- 8" Birch S31°W 17 lks. (11.22')
- 8" Birch N16E 4 lks. (2.64')



LOCATION SKETCH  
(Location of landmark indicated by "●")



(b) Describe any record evidence, monument evidence, occupational evidence, testimonial evidence or any other material evidence you considered, and whether the monument was found or placed.

Found H. Moores erroneous corner. Corner set by B.F.D&DHV Record distances & Genisot survey for Klass realty dated 26 July 74, job # 6178, survey performed by J. C. Kirby. Also made reference to old highway department records.

Set P.K. 3.7' West of center line of highway 17, Set 2, 2"X30" (Aluminum) Oneida Co. monuments, as reference monuments, also tied to a 1/2" iron pipe & a 1 1/2" iron pipe. See drwg.

(c) In the plan view drawing below, provide reference ties to at least 4 witness monuments, or, if the location is within a municipality, to at least 2 witness monuments. (Witness monuments shall be made of concrete, natural stone, iron or other equally durable material, except wood.) Describe witness monuments. BTS-OK WITH MAIL

(d) Show a plan view drawing depicting the relevant monuments and reference ties which is sufficient in detail to enable accurate relocation of the corner monument if the corner monument is disturbed. Indicate north.

WITNESS MONUMENTS

- Oneida Co. Aluminum monument S40°47'54"W 83.73'
- Oneida Co. Aluminum monument N80°16'27"E 55.64'
- Moore's erroneous 1/2", 1/2" I.P. S36°14'27"E 166.65'
- 1 1/2" Iron pipe S12°51'36"E 397.13'

R-19

(c) Describe any material discrepancy between the location of the corner as restored or reestablished and the location of that corner as previously restored or reestablished by distance and direction. Show the discrepancy on the plan view drawing under (d), above. Show the distances between the corner as previously restored or reestablished and (1) the corner as restored or reestablished, and (2) to at least 2 of the witness monuments shown on the drawing in (d), above.

Found Moore's corner to be erroneous, Set our corner 3.7' West of center line, Moore's corner is  $S36^{\circ}14'27''E$  166.65' of our's

2"X30" Oneida Co. monument,  $S40^{\circ}47'54''W$  83.73'

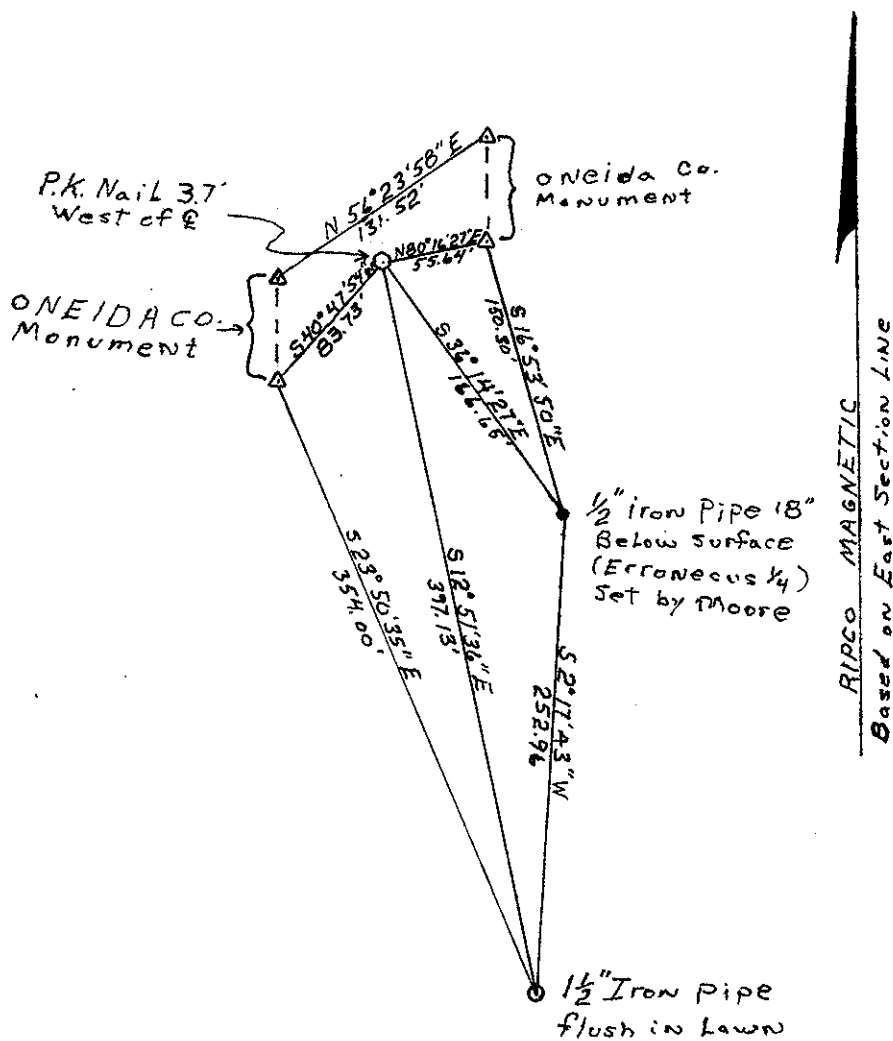
2"X30" Oneida Co. monument,  $N80^{\circ}16'27''E$  55.64'

(f) Was the corner restored through acceptance of (1) an obliterated evidence location, or, (2) a found perpetuated location?

(1)

(g&h) Was the corner reestablished through lost corner proportionate methods? If so, show the method, including the directions and distances to other public land survey corners used as evidence or used for proportioning in determining the corner location?

N/A



(1) I, ROBERT H. WINAT P.L.S. 1010  
 (type or print name) certify that the corner location shown on this record was determined by me or under my direction and control and that this U.S. Public Land Survey Monument Record is correct and complete to the best of my knowledge and belief.

Robert H. Winat  
 Signature

7 Sept. 1984  
 Date

