

CERTIFIED LAND CORNER RESTORATION

Index No. R-1

State of Wisconsin

County of Oneida } ss.

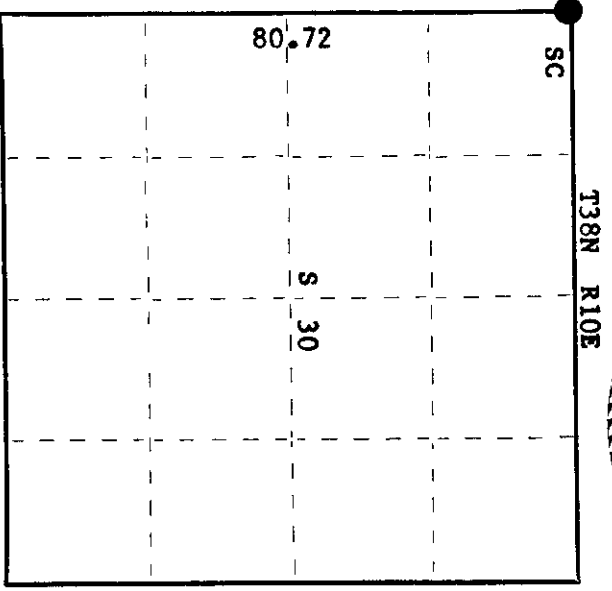
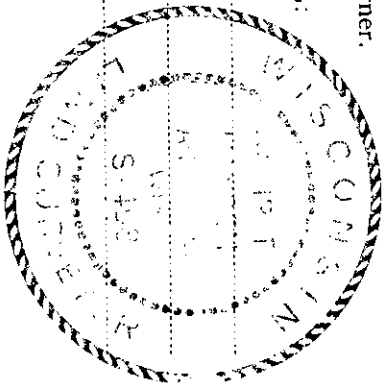
I Phillip T. Hansen, do hereby certify that on the 27th day of January, 1978, I found evidence of the Section corner of 24, 19, 25, 30 Township 38, North, Range 9 & 10 East, Fourth Principal Meridian,

as described hereon; and that from this evidence I established a new monument and accessories as described hereon to perpetuate the original location of this corner.

Resident witnesses:

Jim Clafflin

Herb Wagoner



○ = Corner monument restored.

History of original corner establishment:

Original corner established by Hiram C. Fellows, Deputy Surveyor, in 1859, from which tamarack 6" bears N87°W, 27 links and Tamarack 6" bears N53°E, 68 links. Corner re-established by Loftus and crew, Ripco surveyors, in 1956. Recovered Vaughan's 1/4 corner between Sections 25 & 30 and his section corner 19, 30, 25, 24. Set new iron pipe.

Description of corner evidence found:

Recovered 2" iron pipe with 4" square brass cap, stamped: No evidence of any old BT's recovered. This area had been scarified and replanted to trees and may have destroyed any BT's.

T38N T38N
R 24 19 R
9 25 30 E
RIPCO

Description of monument and accessories I established to perpetuate the original location of this corner. Monument left in place as recovered.

- Marked NBT's -
- Black Spruce 4" S22°W 26.0 links
 - Black Spruce 7" N54°E 14.4 links
 - Black Spruce 6" N47°E 18.8 links
 - Jack Pine 10" due north 117.0 links,
- all scribed SC-BT.

Dated at Rhineland, Wis., this 1st day of February, 1978.

Signature Phillip T. Hansen Title Registered Land Surveyor Registration No. S-498
(County Surveyor, Registered Land Surveyor, or other duly authorized official)

Office of Register of Deeds, County of Oneida. I hereby certify that the within instrument was filed in this office for record on the 6th day of February, 1978 at 9:30 o'clock P. M.

Dorcas Venage Kuehn
(Register of Deeds)

By: _____ Deputy

3809240000

U.S. PUBLIC LAND SURVEY MONUMENT RECORD

Note: This form is intended and designed to fulfill all requirements of Wisconsin Administrative Code, Chapter A-E 7.08 U.S. Public Land Survey Monument Record (3)(a-i).

(a) CORNER LOCATION
 Cor. of Secs. 19, 24, 25 & 30
 Township 38 North
 Range 9 & 10 East of the 4th P.M.
 Town of Sugar Camp
 County of Oneida

WISCRS - Oneida County
 N: 209,739.74 USft
 E: 292,289.65 USft
 Datum: NAD 83(2011)
 GNSS Method: RTN - Direct
 GNSS Control: WISCORS VRS

	SEC.	24	
T38N	R9E		

(b) HISTORY OF ORIGINAL CORNER ESTABLISHMENT

Original Surveyor:

Original Accessories:

Date of Survey Commenced:
 Completed:

See previous USPLS Monument Record

(b)(f)(g)(h) Description of monument found at this corner and if it was accepted, state all evidence (material, testimonial, occupational, plats, records, other monuments) used as a basis for accepting. If not accepted or if nothing was found, state evidence used as basis for establishing location. If re-established through lost corner proportionate methods, indicate all monuments, distances and directions used to establish. Indicate type of monument and sign post found or set.

This is a perpetuation of a previous USPLS Monument Record by Philip T. Hansen, RLS dated February 1, 1978 and filed in the office of the Oneida County Register of Deeds. A complete history of the corner can be found on the previous monument record. I accept the previous location as a true and faithful perpetuation or reestablishment of the original corner location and further perpetuate it as follows.

October 7, 2018: I found and accepted the record monument, a 2" diam. iron pipe with a 4" sq. RIPCO brass plate projecting 18" above the ground surface. All of the record bearing trees have been cut or are gone. I found or established accessories as shown below. I set a white vinyl sign post bearing West, 0.8 ft.

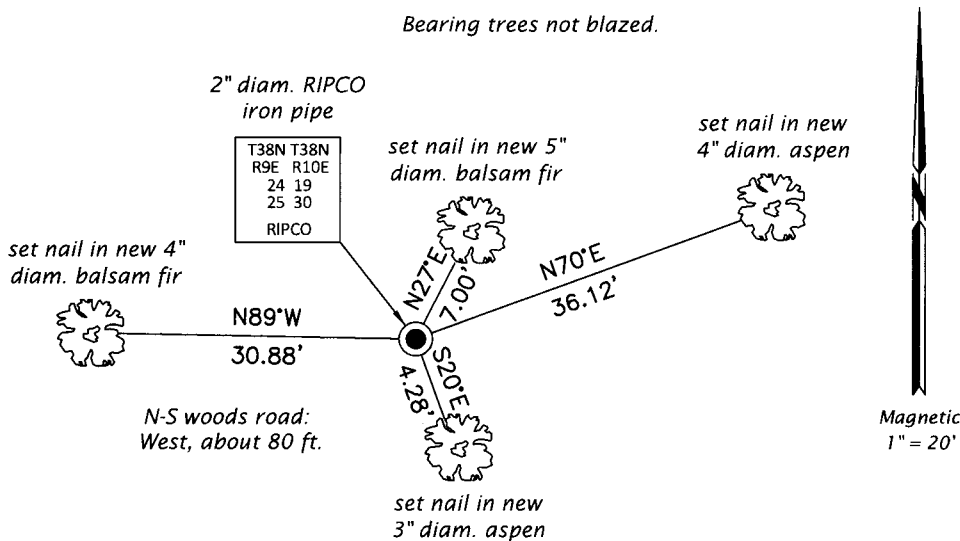
The coordinate value shown has been verified by at least one of the following methods: 1) comparison to a previously GPS determined published value; 2) the value is the average of two or more GPS observations at a markedly different time; 3) one or more distances were measured back to the GPS observed corner from temporary GPS observed offset locations.

REGISTER OF DEEDS OFFICE
 ONEIDA COUNTY
 FILED

DEC 17 2018

KYLE J. FRANSON
 REGISTER OF DEEDS

(c)(d)(e) Plan view of corner with ties to at least 4 witness monuments. If in disagreement with previously established corner, show the distances between the two corners and also indicate the ties to the disputed.



(i) I, Jeffrey W. Austin, Professional Land Surveyor No. S-1885, hereby certify that the corner location on this record was determined by me or under my direction and control and that this U.S. Public Land Survey Monument Record is correct and complete to the best of my knowledge and belief.

 Signature

3 DEC 2018

 Date