

CERTIFIED LAND CORNER RESTORATION

Index No. **P-25**

State of Wisconsin

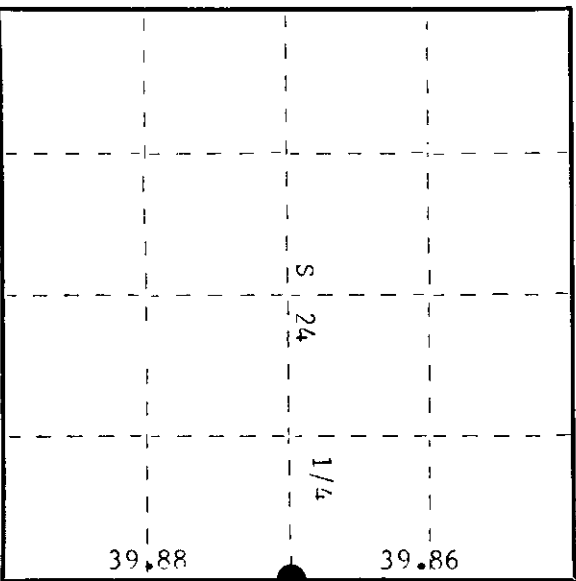
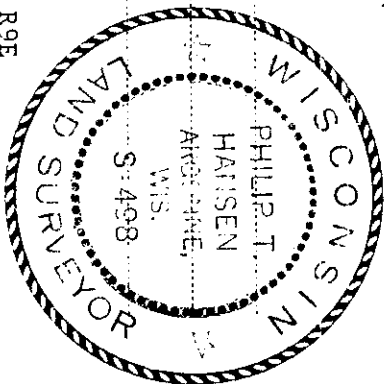
County of Oneida } ss.

I Phillip T. Hansen, do hereby certify that on the 14th day of July, 1977, I found evidence of the Quarter corner of Section 24 & 19 Township 38, North, Range 9 East, Fourth Principal Meridian, as described hereon; and that from this evidence I established a new monument and accessories as described hereon to perpetuate the original location of this corner.

Resident witnesses:

Jim Clafflin

Herb Wagoner



○ = Corner monument restored.

History of original corner establishment:

Corner restored by N. Loftus, Ripco Surveyor, in 1956. Ran random line S 2° 25' E from Section Corner 13, 18, 24, 19, at 39.96 chains closed out 2 links east of old 1/4 corner post, origin unknown. Set new iron pipe and marked NBTs - Cedar 8" S49°E, 30 links Cedar 7" N31°E, 55 links

Description of corner evidence found:

Recovered 2" iron pipe with 4" square brass cap in excellent condition. Cap stamped: Monument projects 26" above ground. Recovered OBT - Cedar 7" N31°E (N35°E) 55 links (57 links) The cedar 8" S49°E, 30.0 links has been cut. T38N R9E T38N R10E 1/2 S24 1/2 S19 RIPCO

Description of monument and accessories I established to perpetuate the original location of this corner.

Marked NBTs - Cedar 8" S66°E, 27.2 links Cedar 10" N45°W, 60.5 links, scribed 1/4 BT.

Dated at Rhineland, Wis. this 18th day of July, 1977

Signature: Phillip T. Hansen Title Registered Land Surveyor Registration No. S-498
(County Surveyor, Registered Land Surveyor, or other duly authorized official)

Office of Registrar of Deeds, County of Oneida I hereby certify that the within instrument was filed in this office for record on the 5th day of August, 1977 at 9:00 o'clock A. M.

Doris Terage Kuehn
(Registrar of Deeds)

By: _____ Deputy

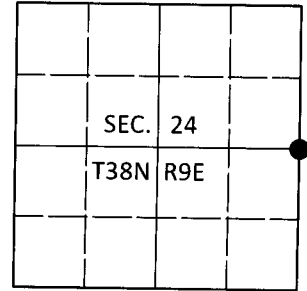
3809242000

U.S. PUBLIC LAND SURVEY MONUMENT RECORD

Note: This form is intended and designed to fulfill all requirements of Wisconsin Administrative Code, Chapter A-E 7.08 U.S. Public Land Survey Monument Record (3)(a-i).

(a) CORNER LOCATION
 1/4 Cor. of Secs. 19 & 24
 Township 38 North
 Range 9 & 10 East of the 4th P.M.
 Town of Sugar Camp
 County of Oneida

WISCRS - Oneida County
 N: 212,361.50 USft
 E: 292,351.37 USft
 Datum: NAD 83(2011)
 GNSS Method: RTN - Direct
 GNSS Control: WISCORS VRS



(b) HISTORY OF ORIGINAL CORNER ESTABLISHMENT

Original Surveyor:

Original Accessories:

Date of Survey Commenced:
 Completed:

See previous USPLS Monument Record

(b)(f)(g)(h) Description of monument found at this corner and if it was accepted, state all evidence (material, testimonial, occupational, plats, records, other monuments) used as a basis for accepting. If not accepted or if nothing was found, state evidence used as basis for establishing location. If re-established through lost corner proportionate methods, indicate all monuments, distances and directions used to establish. Indicate type of monument and sign post found or set.

This is a perpetuation of a previous USPLS Monument Record by Philip T. Hansen, RLS dated July 18, 1977 and filed in the office of the Oneida County Register of Deeds. A complete history of the corner can be found on the previous monument record. I accept the previous location as a true and faithful perpetuation or reestablishment of the original corner location and further perpetuate it as follows.

October 7, 2018: I found and accepted the record monument, a 2" diam. iron pipe with a 4" sq. RIPCO brass plate projecting 18" above the ground surface. The record bearing tree at N31°E is gone. I found or established accessories as shown below. I set a white vinyl sign post bearing North, 1 ft.

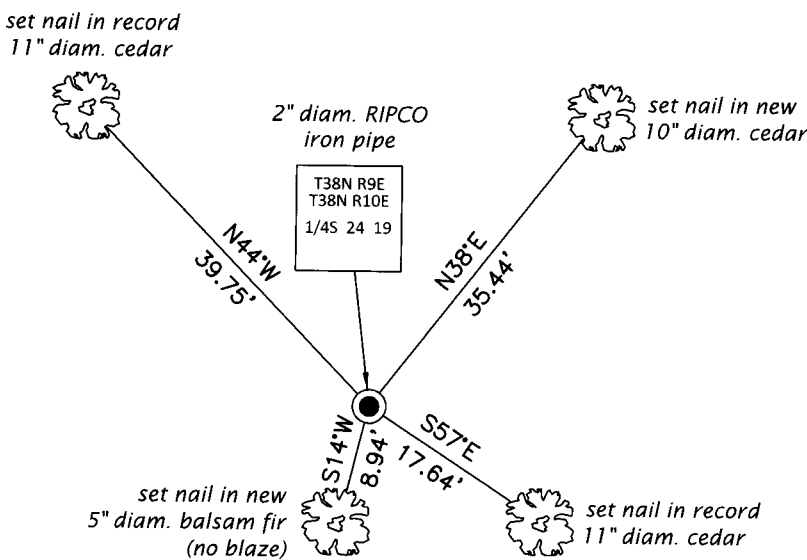
The coordinate value shown has been verified by at least one of the following methods: 1) comparison to a previously GPS determined published value; 2) the value is the average of two or more GPS observations at a markedly different time; 3) one or more distances were measured back to the GPS observed corner from temporary GPS observed offset locations.

REGISTER OF DEEDS OFFICE
 ONEIDA COUNTY
 FILED

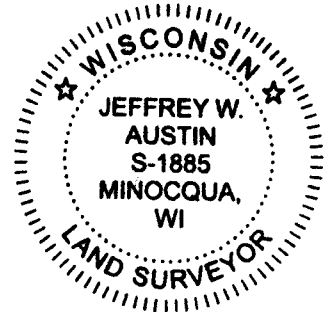
DEC 17 2018

KYLE J. FRANSON
 REGISTER OF DEEDS

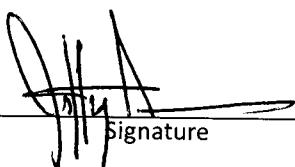
(c)(d)(e) Plan view of corner with ties to at least 4 witness monuments. If in disagreement with previously established corner, show the distances between the two corners and also indicate the ties to the disputed.



Magnetic
 1" = 20'



(i) I, Jeffrey W. Austin, Professional Land Surveyor No. S-1885, hereby certify that the corner location on this record was determined by me or under my direction and control and that this U.S. Public Land Survey Monument Record is correct and complete to the best of my knowledge and belief.


 Signature

3 DEC 2018
 Date