

CERTIFIED LAND CORNER RESTORATION

Index No. V-1

State of Wisconsin }  
County of Oneida } ss.

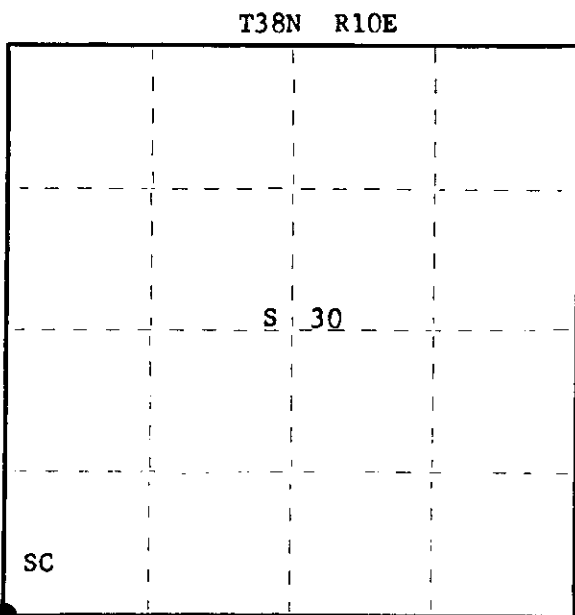
I, Philip T. Hansen, do hereby certify that on the 20th day of September, 1978, I found evidence of the section corner of Sections 30, 31, 25, 36 Township 38, North, Range 9 & 10 East, Fourth Principal Meridian, as described hereon; and that from this evidence I established a new monument and accessories as described hereon to perpetuate the original location of this corner.

Resident witnesses:

Jim Claflin

Herb Wagoner

John Masbaum



○ = Corner monument restored.

History of original corner establishment:

Original corner established by Hiram C. Fellows, Deputy Surveyor, in 1860, from which Maple 7" bears S74°W, 11 links; Birch 12" bears N63°W, 33 links; White Pine 12" bears N68°E, 13 links and Spruce 14" bears S16°E, 11 links.

N. Loftus, Ripco Surveyor, set lag screw in blacktop at intersection of centerline of roads. Marked B.O. - light pole N20°W, 38 links.

Description of corner evidence found:

Recovered Ripco's 1/2" lag pin in centerline of Rolling Acres Road at intersection of centerline of Branch Road south.

Recovered B.O. - power pole #E-24, N20°W, 37.8 links.

Description of monument and accessories I established to perpetuate the original location of this corner.

Set a 2 1/2" Berntsen A-1 Federal Monument (O.C.) for witness corner, S45°E, 65.0 links from true corner.

Monument projects 5" above ground. Cap stamped:

Marked new B.O. -  
underground telephone receptical E-80, N55°E, 43.5 links

S498	1978
R	T38N R
o	25 + 30 10 W.C.
E	36 + 31 E
N45°W	65 lks

Dated at Rhineland, Wis., this 4th day of October, 1978

Signature Philip T. Hansen Title Registered Land Surveyor Registration No. S-498  
County Surveyor, Registered Land Surveyor, or other duly authorized official)

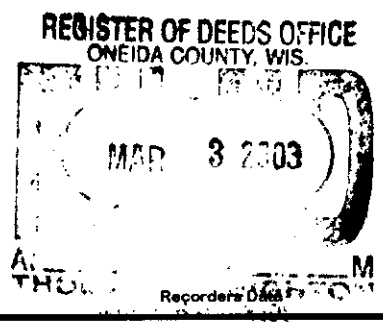
Office of Register of Deeds, County of Oneida, I hereby certify that the within instrument was filed in this office for record on the 9th day of October, 1978 at 1:30 o'clock P. M.

Donna Terage Kucina  
(Register of Deeds)

By \_\_\_\_\_ Deputy

FORM 965 H. C. M. LER CO., MILWAUKEE

3809 25 0000



This form is intended to fulfill the requirements of Chapter A-E 7.08 (3)(a) thru (i) U.S. Public Land Survey Monument Location Record, Wisconsin Administrative Code. Use the reverse side of form for continuation.

**U.S. PUBLIC LAND SURVEY MONUMENT LOCATION RECORD**

USPLS CORNER: NW SECTION CORNER SECTION: 31 TOWNSHIP: 38 NORTH RANGE: 10 EAST

NAME OF WATERWAY FOR M.C. CORNER : N/A SECTION LINE: N/A

~~(CITY)~~(VILLAGE)(TOWN) OF: SUGAR CAMP COUNTY OF: ONEIDA

Description of monument found or placed and all other evidence used as the basis for monument location; including monuments and related measurements required if the corner location was reestablished by lost corner proportionate methods. Also indicate name of original surveyor, original survey date and the corner monument, bearing trees, witness or other reference monuments established; including measured bearing and distance ties, from available records.

**THIS CORNER WAS RE-REFERENCED WITH PRIOR APPROVAL OF ONEIDA COUNTY SURVEYOR MICHAEL J. ROMPORTL AS REMAINING REFERENCES FOUND INADEQUATE FOR FUTURE RECOVERY PURPOSES.**

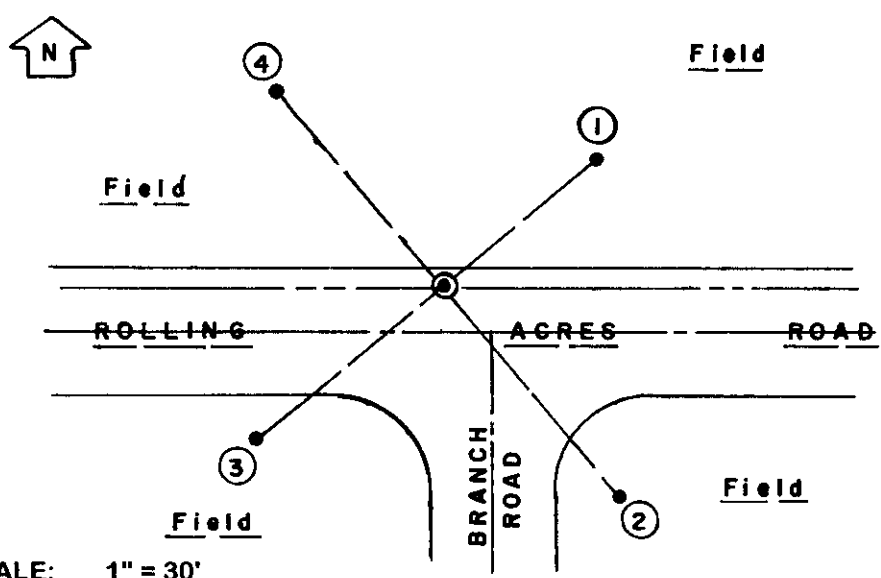
This corner was last referenced for record by Philip T. Hansen/RLS 498 per U.S. Public Land Survey Monument Location Record filed October 9, 1978 in Oneida County records, which should be referred to for historical documentation.

I found Telephone Box E-80 NE and Oneida capped aluminum monument SE as referenced by Hansen, but could not verify his NW power pole reference as present pole is newer and with differing pole number. I also could not find the 1/2" lag pin noted by Hansen in road intersection at this corner.

Although location of the railroad spike found in blacktop pavement at this corner checked within 0.2 feet from telephone box and capped aluminum monument record references, I traversed section line West to the North 1/4 corner of Section 36, T38N, R9E, which resulted in a distance measure of 2019.86', which compared favorably with a record measure of 2019.94' per James Will/RLS 1410 Plat of Survey B-1425 and Michael J. Romportl/RLS 1624 Plat of Survey B-2844, both filed in Oneida County survey records. The RR spike at corner falls 7' North and 7.5' West of the blacktop pavement centerlines at 'T' intersection E/W & S. Standard white poly 'T' marker post set 21 feet North of corner.

This recovery completed September 12, 2002; there were no direct witnesses other than vehicle drive-bys.

Plan view map of monument location with bearing and distance ties to a minimum of four(4) described witness or reference monuments of concrete, natural stone, iron, live bearing trees or equivalent material. If applicable, also show a minimum of two(2) bearing and distance ties to any other monument found and not accepted; including the bearing and distance from the accepted monument.



- WITNESS MONUMENT TIES:**
- ① 5/8" dia. by 24" long rebar set flush with yellow poly RM cap N50°E 31.10'; falls 2.5' North of Tel Box E-80.
  - ② Record 2" dia. iron pipe reference monument found with stamped Oneida County cap 4" up S40°E 43.14'.
  - ③ 5/8" dia. by 24" long rebar set flush with yellow poly RM cap S50°W 36.90'.
  - ④ Uncapped older 1" dia. iron pipe found flush N40°W 40.05'; Yellow poly RM cap set into top of pipe.
- No BTs found or nearby as all four quadrants are large open fields.

SCALE: 1" = 30'

Unless otherwise indicated, all bearing tree ties are to a .25" dia. by 2.5" long PK nail with a 1.25" dia. steel washer driven into unblazed right face and a .25" dia. by 2.5" long PK nail with a 2" dia. steel washer stamped BT is also driven into unblazed face of bearing tree at DBH; the basis for measured bearings is by compass to nearest degree and all tie distances are measured horizontal by steel tape corrected to nearest 1/100th feet at standard temperature of 68° F.

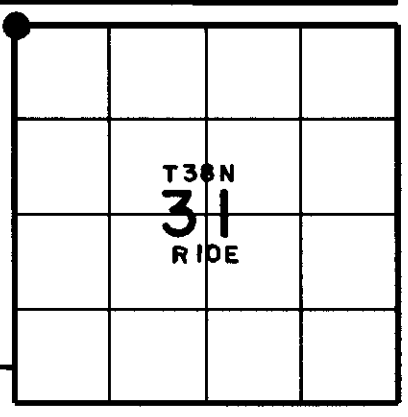
RLS SEAL:



LAND SURVEYOR CERTIFICATE:

I, William C. Rohde, hereby certify that I am duly licensed as a Professional Land Surveyor in the State of Wisconsin; that this USPLS monument location was determined by me and/or under my direct supervision and control; and that this U.S. Public Land Survey Monument Location Record is true and correct to the best of my knowledge and belief.

Signed: *William C. Rohde*  
William C. Rohde RLS 841



FEB 08 2023

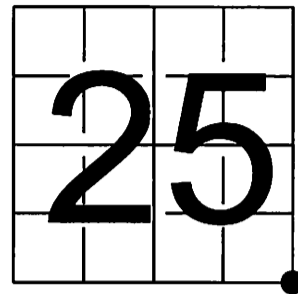
KYLE J. FRANSON  
REGISTER OF DEEDS

# U S PUBLIC LAND SURVEY MONUMENT RECORD - ADDENDUM

NOTE: This form is intended and designed to fulfill all requirements of Wisconsin Administrative Code, Chapter A-E 7.08 U.S. Public Land Survey Monument Record (3) (a-l)

A-E 7.08(3)(a) Identity of corner  
SOUTHEAST CORNER OF SECTION 25  
TOWNSHIP 38 NORTH  
RANGE 09 EAST OF THE 4TH PM  
TOWN OF SUGAR CAMP,  
COUNTY OF ONEIDA

WISCRS - ONEIDA COUNTY  
N: 204,413.206 USft (204,413.237)  
E: 292,295.188 USft (292,295.089)  
Datum: NAD83 (2011)  
GNSS Method RTN - Direct  
GNSS Control WISCORS VRS



The coordinate value shown has been verified by the average of two or more GPS observations at a markedly different time. Values shown in parenthesis, are previously published measurements.

A-E 7.08(3)(b) Description of any record evidence, monument evidence, occupational evidence, testimonial evidence, or any other material evidence.

Original Surveyor: Hiram C. Fellows

Date of Original Survey Commenced: July, 1859  
Completed: July, 1859

Original Accessories:  
Maple 7 S 74° W 11 Links  
Birch 12 N 63° W 33 Links  
White Pine 12 N 68° E 13 Links  
Spruce 14 S 16° E 11 Links

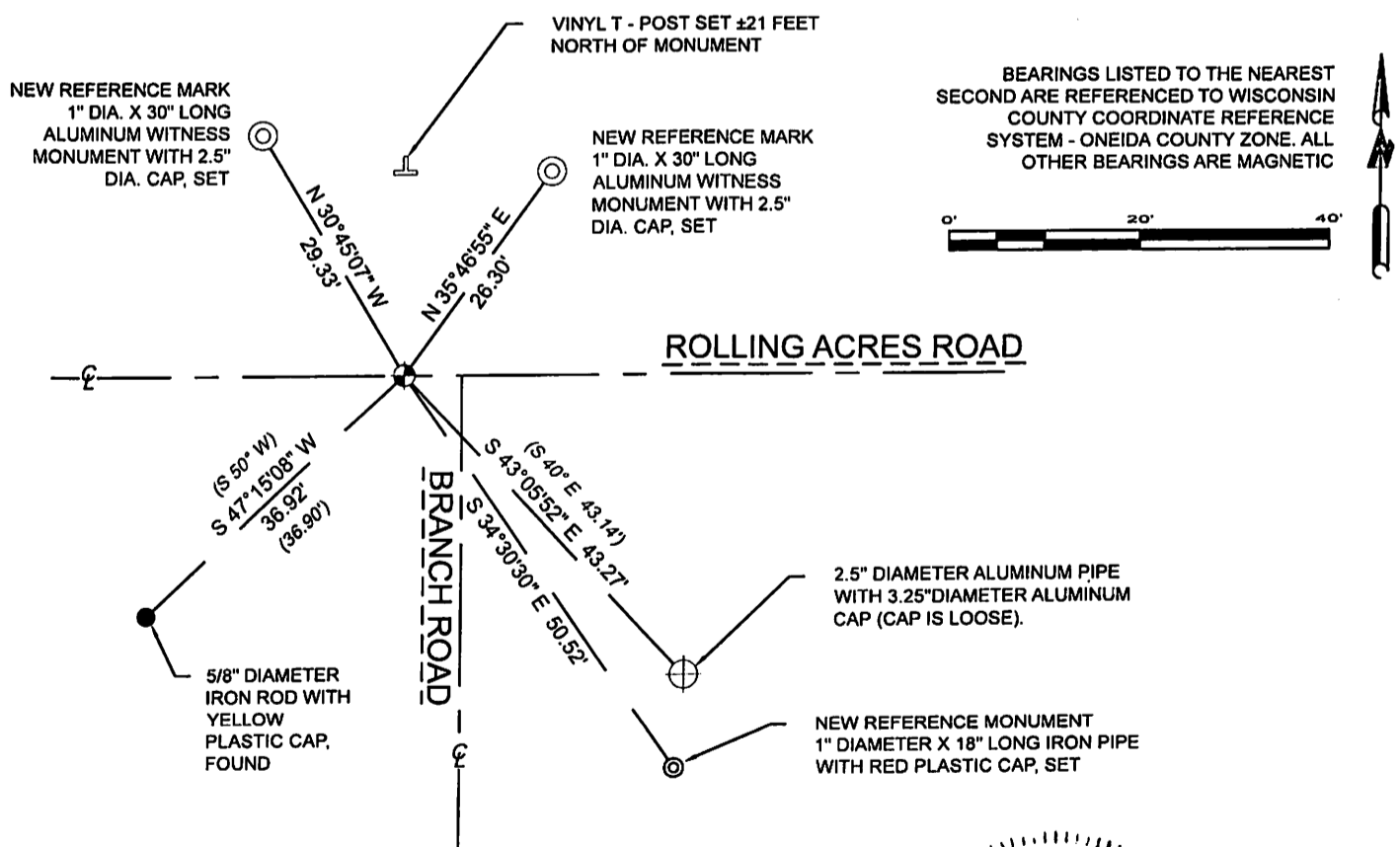
See Previous Monument Record: Index No. V-1 - September 12, 2002 - Surveyor 0841 - William C. Rohde - Thence:

June 10, 2014 - Surveyor 2439 - Charles L. Oleinik - indicates this position as "found RR spike" on O.C.S. Map A2901.

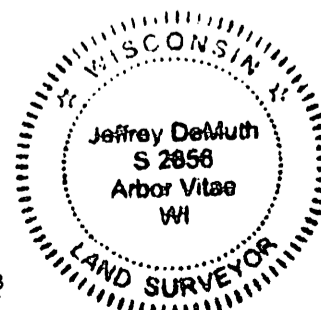
June 01, 2022 - At the request of Oneida County Land Information, I found: a railroad spike ±6 feet west of Branch Road centerline, and on the centerline of Rolling Acres Road. I also found 2 of Rohde's reference monuments established as noted on U.S. Public Land Survey Monument Record V-1.

A-E 7.08(3)(f) I accept this monument as a FOUND PERPETUATED LOCATION OF THE CORNER and established 3 new witnesses as shown below.

A-E 7.08(3)(c)(d)(e)(h) Plan view of corner with references to at least 4 witness monuments. If in disagreement with previously established corner, show the distances between the two corners and also indicate the ties to the disputed. The directions and distances to other public land survey corners used as evidence or used for determining the corner location.



A-E 7.08(3)(i) I, Jeffrey L. DeMuth, Professional Land Surveyor No. S-2656, hereby certify that the corner location on this record was determined by me or under my direction and control and that this U.S. Public Land Survey Monument Record is correct and complete to the best of my knowledge, and belief



SIGNATURE

January 17, 2023

DATE

V-25

43809250000