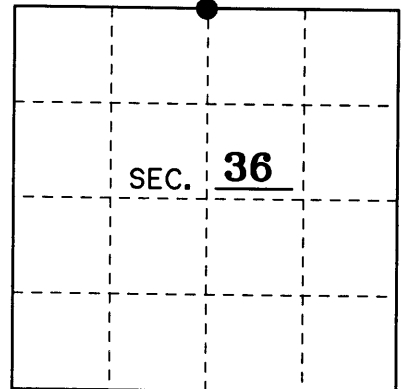


# U.S. PUBLIC LAND SURVEY MONUMENT RECORD

Note: This form is intended and designed to fulfill all requirements of Wisconsin Administrative Code, Chapter A-E 7.08 U.S. Public Land Monument Record (3)(a)(b)(c)(d)(e)(f)(g)(h)(i). An additional sheet may be added if necessary to conform with said requirements.

(a) CORNER LOCATION: NORTH County or State Plane Coordinates  
1/4 Corner of Section 36 Northing \_\_\_\_\_  
 Township 38 North Easting \_\_\_\_\_  
 Range 9 East Datum Base \_\_\_\_\_  
 Township/City Sugar Camp County of ONEIDA



(b) HISTORY OF ORIGINAL CORNER ESTABLISHMENT Original B.T.'s  
 Original Surveyor: Wm. Daugherty 12° W. PINE S 43° W 14 LKS.  
 Date of Survey: Sept. 14-21, 1863 10° BIRCH N 31° E 11 LKS.

(b)(f)(g)(h) Description of monument found at this corner and if it was accepted, state all evidence (material, testimonial, occupational, plats, records, other monuments) used as a basis for accepting. If not accepted or if nothing was found, state evidence used as basis for establishing location. If reestablished through lost corner proportionate methods, indicate all monuments, distances and directions used to establish. Indicate type of monument and sign post found or set.

12-10-1957 RIPCO SUBDIVIDES SECTION 25 AND USES THIS CORNER.

9-16-1975 L. SCHMIT SUBDIVIDES SECTION 36 AND USES CORNER 14.61 FEET WEST FOR THE NORTH 1/4 OF SECTION 36.

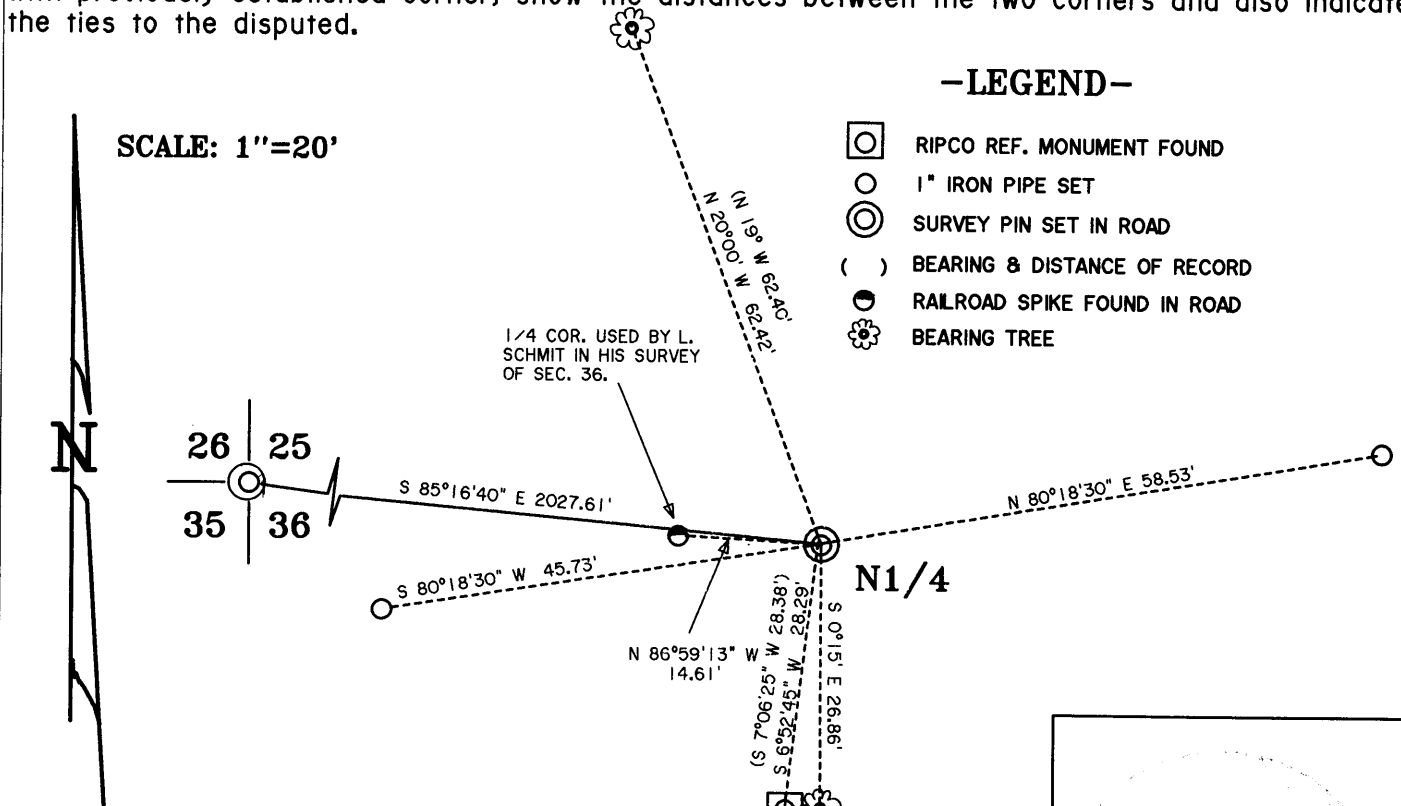
11-21-1985 I SUBDIVIDE SECTION 36 AND USE THE CORNER USED BY RIPCO IN SECTION 25 FOR THE NORTH 1/4 CORNER OF SECTION 36.

7-23-1987 M.J. ROMPORTL USES RIPCO'S 1/4 COR. IN HIS SURVEY IN SEC. 36.

7-13-1998 W. BANDOW DOES SURVEY IN SECTION 36 AND SHOWS BOTH 1/4 CORNERS IN HIS SURVEY.

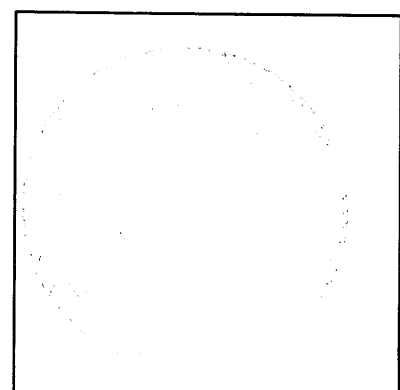
12-24-2001 I RESET A SURVEY PIN AS A PERPETUATION OF RIPCO'S 1/4 LOCATION. I ALSO SHOW THE LOCATION OF ANOTHER 1/4 COR. USED IN PREVIOUS SURVEYS AS LISTED ABOVE. I WITNESSED RIPCO'S CORNER AS SHOWN BELOW.

(c)(d)(e) Plan view of the corner with ties to at least 4 witness monuments. If in disagreement with previously established corner, show the distances between the two corners and also indicate the ties to the disputed.



(i) I, JAMES L. WILL R.L.S. No. 1410  
 hereby certify that the corner location on this record was determined by me or under my direction and control and that this U.S. Public Land Survey Monument Record is correct and complete to the best of my knowledge and belief.

Signature *JL Will* Date 12-24-2001



Index No. V-23

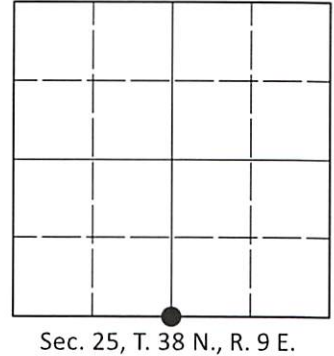
3809250020

# U.S. PUBLIC LAND SURVEY MONUMENT RECORD

Note: This form is intended and designed to fulfill all requirements of Wisconsin Administrative Code, Chapter A-E 7.08 U.S. Public Land Survey Monument Record (3)(a-i).

(a) CORNER LOCATION  
 1/4 Cor. of Secs. 25 & 36  
 Township 38 North  
 Range 9 East of the 4th P.M.  
 Town of Sugar Camp  
 County of Oneida

WISCRS - Oneida County  
 N: 204,589.26 USft  
 E: 290,283.09 USft  
 Datum: NAD 83(2011) ep. 2010.00  
 GNSS Method: RTN - Offset  
 GNSS Control: WISCORS VRS



(b)(f)(g)(h) Description of monument found at this corner and if it was accepted, state all evidence (material, testimonial, occupational, plats, records, other monuments) used as a basis for accepting. If not accepted or if nothing was found, state evidence used as basis for establishing location. If re-established through lost corner proportionate methods, indicate all monuments, distances and directions used to establish. Indicate type of monument and sign post found or set.

*This record is a perpetuation of the following land corner document(s):*

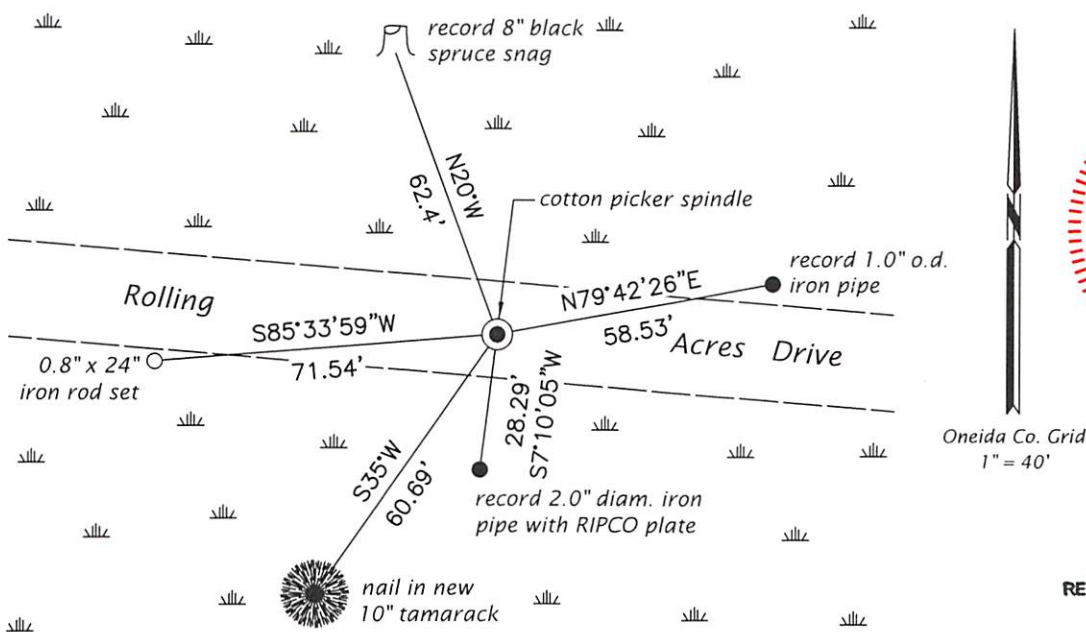
*December 24, 2001: USPLS Monument Record by James L. Will, filed in Oneida County*

*A complete history of the corner can be found on the previous land corner document(s). I accept the record activity as a true and faithful perpetuation or reestablishment of the original corner location and further perpetuate it as described below.*

*July 26, 2021: I was unable to recover evidence of the "survey pin" described in the record. The monument by Schmit and Will's westerly reference monument are also gone. I established the corner by intersecting record distances from the RIPCO monument and Will's easterly reference monument as shown below. The resulting location checks the remains of the record bearing tree and the section corner to the West. At the corner point, I set a cotton picker spindle 1 ft. South of the road centerline. I found or established accessories as shown below. I found a white vinyl sign post adjacent to the RIPCO monument.*

*The coordinate value shown has been verified by at least one of the following methods: 1) comparison to a previously GNSS determined published value; 2) the value is the average of two or more GNSS observations at a markedly different time; 3) one or more distances were measured back to the GNSS observed corner from temporary GNSS observed offset locations.*

(c)(d)(e) Plan view of corner with ties to at least 4 witness monuments. If in disagreement with previously established corner, show the distances between the two corners and also indicate the ties to the disputed.



(i) I, Jeffrey W. Austin, Professional Land Surveyor No. S-1885, hereby certify that the corner location on this record was determined by me or under my direction and control and that this U.S. Public Land Survey Monument Record is correct and complete to the best of my knowledge and belief.

  
 Signature

SEP 5, 2021  
 Date

SEP 27 2021

KYLE J. FRANSON  
 REGISTER OF DEEDS