

CERTIFIED LAND CORNER RESTORATION

Index No. T-1
3809252000
3809252000

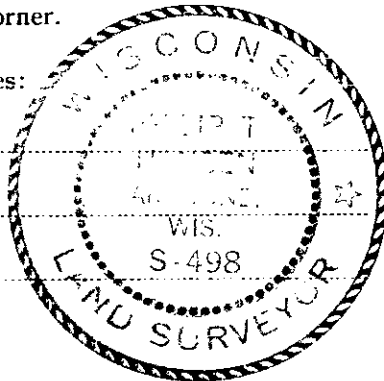
State of Wisconsin }
County of Oneida } ss.

I, Philip T. Hansen, do hereby certify that on the 20th day of January, 1978, I found evidence of the Quarter corner of Section 25 - 30 Township 38 North, Range 9 & 10, Fourth Principal Meridian, as described hereon; and that from this evidence I established a new monument and accessories as described hereon to perpetuate the original location of this corner.

Resident witnesses:

Jim Claflin

Herb Wagoner



History of original corner establishment:

Original corner established by H.C. Fellows, Deputy Surveyor, in 1860 from which Tamarack 6" bears N87°W, 27 links and Tamarack 6" bears N53°E, 68 links.

Corner recovered by Goddard and crew, Ripco surveyors, in 1960. Probably D.H. Vaughan's post, also recovered his OBT stump N35°E, 68 links.

Set new post and marked NBT's - Black Spruce 3" S65°W, 14 links; Tamarack 3" N35°W, 48 links.

Description of corner evidence found:

Recovered 2" iron pipe with 4" square brass cap, stamped:
Monument is flush with ground.

Corner sets in a large stagnant spruce swamp.

Recovered OBT's - Black Spruce 3" (5") S65°W, 14.0 links (15.0 lks), scribed 1/4 BT.

Tamarack 3" (4") N35°W, 48.0 links (47.4 lks.)

T38N R9E T38N R10E
1/4 S25 + S30

Description of monument and accessories I established to perpetuate the original location of this corner.

As mark was in good condition, it was left as recovered.

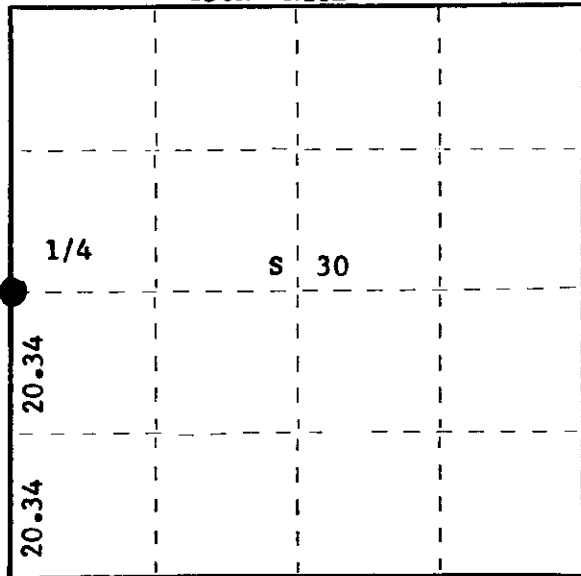
Made a 4" square spruce post and set it along side of monument.

Marked NBT's - Black Spruce 4" N3°W, 27.2 links

Tamarack 4" N69°W, 53.8 links, scribed 1/4 BT.

FORM 985 H. C. MILLER CO., MILWAUKEE

T38N R10E



○ = Corner monument restored.

Dated at Rhineland, Wis., this 24th day of January, 1978.

Signature Philip T. Hansen Title Registered Land Surveyor Registration No. S-498
(County Surveyor, Registered Land Surveyor, or other duly authorized official)

Office of Register of Deeds, County of Oneida, I hereby certify that the within instrument was filed in this office for record on the 6th day of February, 1978 at 4:30 o'clock a M.

Doris Verage Kuehn
(Register of Deeds)

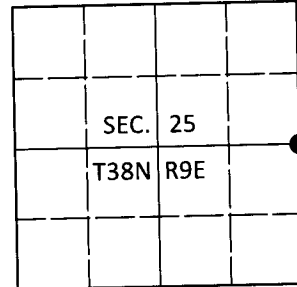
By _____ Deputy

U.S. PUBLIC LAND SURVEY MONUMENT RECORD

Note: This form is intended and designed to fulfill all requirements of Wisconsin Administrative Code, Chapter A-E 7.08 U.S. Public Land Survey Monument Record (3)(a-i).

(a) CORNER LOCATION
 1/4 Cor. of Secs. 25 & 30
 Township 38 North
 Range 9 & 10 East of the 4th P.M.
 Town of Sugar Camp
 County of Oneida

WISCORS - Oneida County
 N: 207,083.52 USft
 E: 292,267.94 USft
 Datum: NAD83(2011)
 GNSS Method: RTN - Direct
 GNSS Control: WISCORS VRS



(b) HISTORY OF ORIGINAL CORNER ESTABLISHMENT

Original Surveyor: _____ Original Accessories: _____
 Date of Survey Commenced: _____ See previous monument record(s)
 Completed: _____

(b)(f)(g)(h) Description of monument found at this corner and if it was accepted, state all evidence (material, testimonial, occupational, plats, records, other monuments) used as a basis for accepting. If not accepted or if nothing was found, state evidence used as basis for establishing location. If re-established through lost corner proportionate methods, indicate all monuments, distances and directions used to establish. Indicate type of monument and sign post found or set.

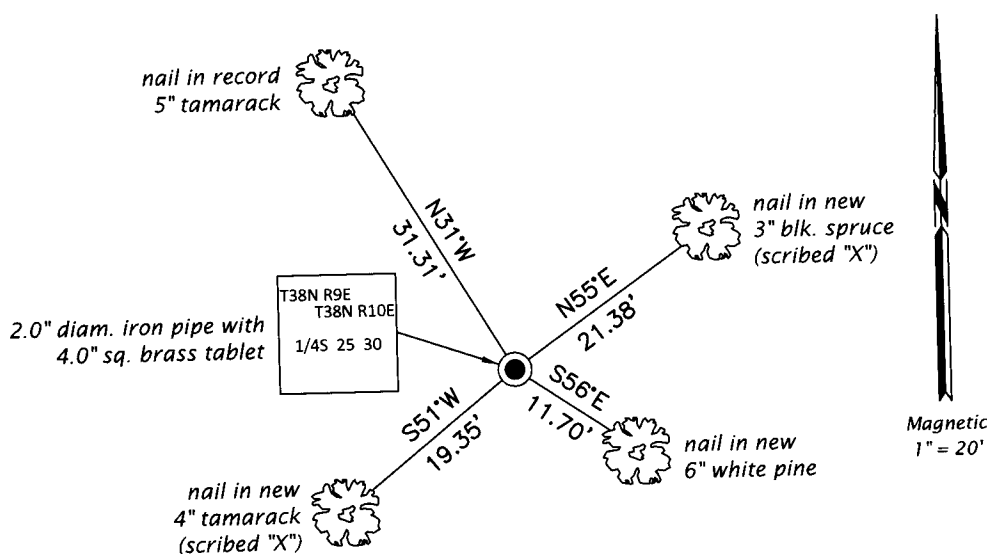
This is a perpetuation of the following monument record(s) that comprise a complete history of the corner:

Jan. 24, 1978: Certified Land Corner Restoration No. 3809252000 by Philip T. Hansen, RLS

Jul. 9, 2019: I found and accepted the record monument, a 2.0" diam. iron pipe with a 4.0" sq. brass tablet projecting 8" above the bog surface. The record bearing trees at N69°W and S65°W are standing dead. The record bearing tree at N3°W is down. I found or established accessories as shown below. I set a white vinyl sign post bearing North, 1.0 ft.

The coordinate value shown has been verified by at least one of the following methods: 1) comparison to a previously GPS determined published value; 2) the value is the average of two or more GPS observations at a markedly different time; 3) one or more distances were measured back to the GPS observed corner from temporary GPS observed offset locations.

(c)(d)(e) Plan view of corner with ties to at least 4 witness monuments. If in disagreement with previously established corner, show the distances between the two corners and also indicate the ties to the disputed.



REGISTER OF DEEDS OFFICE
 ONEIDA COUNTY
 FILED

AUG 28 2019

KYLE J. FRANSON
 REGISTER OF DEEDS

(i) I, Jeffrey W. Austin, Professional Land Surveyor No. S-1885, hereby certify that the corner location on this record was determined by me or under my direction and control and that this U.S. Public Land Survey Monument Record is correct and complete to the best of my knowledge and belief.

 Signature
 JUL. 26, 2019
 Date