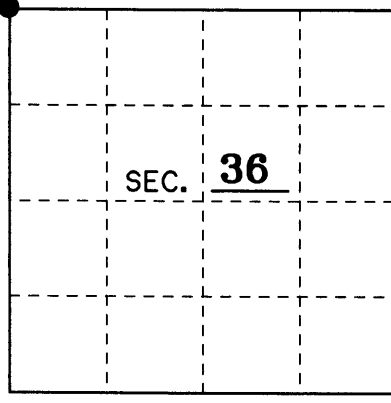


# U.S. PUBLIC LAND SURVEY MONUMENT RECORD

Note: This form is intended and designed to fulfill all requirements of Wisconsin Administrative Code, Chapter A-E 7.08 U.S. Public Land Monument Record (3)(a)(b)(c)(d)(e)(f)(g)(h)(i). An additional sheet may be added if necessary to conform with said requirements.

(a) CORNER LOCATION: NORTHWEST County or State Plane Coordinates  
 SECTION 36 Northing \_\_\_\_\_  
 Corner of Section \_\_\_\_\_ Easting \_\_\_\_\_  
 Township 38 North Datum Base \_\_\_\_\_  
 Range 9 East County of ONEIDA  
 Township/City Sugar Camp

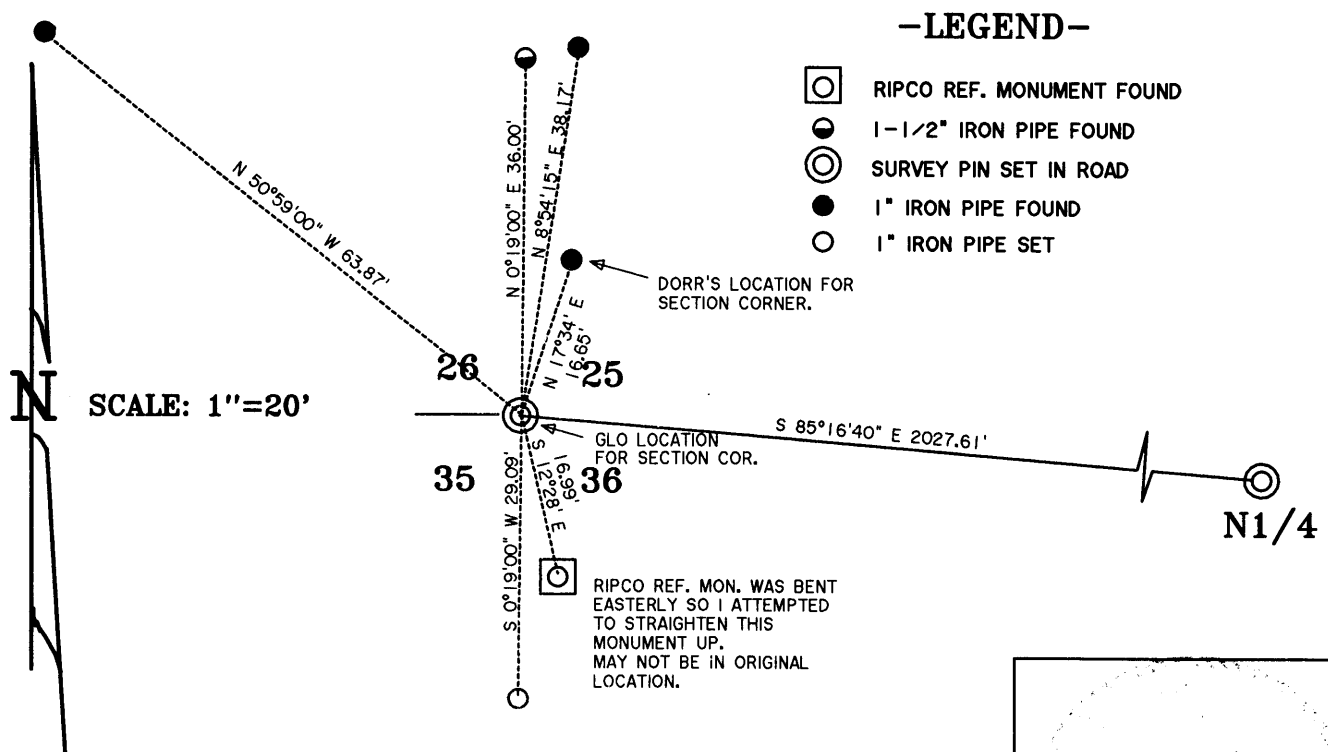


(b) HISTORY OF ORIGINAL CORNER ESTABLISHMENT Original B.T.'s  
 Original Surveyor: Wm. Daugherty 12° W. PINE N 56° W 37 LKS.  
 Date of Survey: Sept. 14-21, 1863 10° BIRCH S 60° E 15 LKS.

(b)(f)(g)(h) Description of monument found at this corner and if it was accepted, state all evidence (material, testimonial, occupational, plats, records, other monuments) used as a basis for accepting. If not accepted or if nothing was found, state evidence used as basis for establishing location. If reestablished through lost corner proportionate methods, indicate all monuments, distances and directions used to establish. Indicate type of monument and sign post found or set.

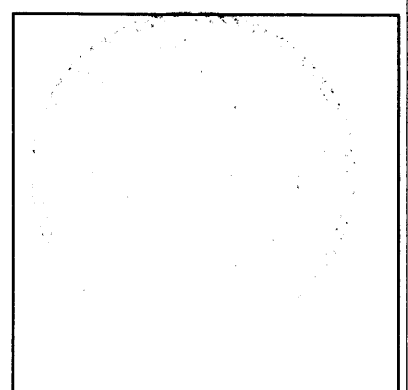
10-12-1894 B.F. DORR USES CORNER AS SHOWN BELOW WHICH IS REFERENCED BY RIPCO'S MONUMENT.  
 8-03-1952 G.L.O. DOES SURVEY IN SECTION 35 AND FINDS PIPE IN ROAD AND USES FOR SECTION CORNER. THEY LOOKED FOR DORR'S CORNER BUT COULD NOT FIND IT.  
 12-10-1957 RIPCO SUBDIVIDES SECTION 25 AND USES DORR'S LOCATION FOR THE SECTION CORNER.  
 9-16-1975 L. SCHMIT DOES SURVEY IN SECTION 36 AND USES THE GLO LOCATION FOR THE SECTION CORNER.  
 12-23-1986 T.J. LOFTUS DOES SURVEY IN SECTION 25 AND USES GLO LOCATION FOR THE SECTION CORNER.  
 11-21-1985 I SUBDIVIDE SECTION 36 AND USE THE GLO LOCATION FOR THE SECTION CORNER  
 12-24-2001 I RESET THE GLO'S POSITION FOR THE SECTION CORNER AND TIE IN REFERENCES AS SHOWN BELOW.

(c)(d)(e) Plan view of the corner with ties to at least 4 witness monuments. If in disagreement with previously established corner, show the distances between the two corners and also indicate the ties to the disputed.



(i) I, JAMES L. WILL R.L.S. No. 1410  
 hereby certify that the corner location on this record was determined by me or under my direction and control and that this U.S. Public Land Survey Monument Record is correct and complete to the best of my knowledge and belief.

Signature *JL Will* Date 12-24-2001



3809260000

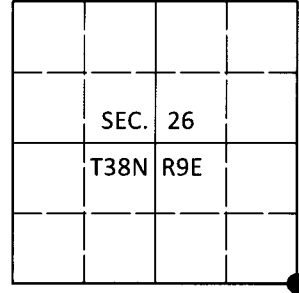
Index No. V-21

**U.S. PUBLIC LAND SURVEY MONUMENT RECORD**

Note: This form is intended and designed to fulfill all requirements of Wisconsin Administrative Code, Chapter A-E 7.08 U.S. Public Land Survey Monument Record (3)(a-i).

(a) CORNER LOCATION  
 Cor. of Secs. 25, 26, 35 & 36  
 Township 38 North  
 Range 9 East of the 4th P.M.  
 Town of Sugar Camp  
 County of Oneida

WISCRS - Oneida County  
 N: 204,749.75 USft  
 E: 288,261.76 USft  
 Datum: NAD 83(2011)  
 GNSS Method: RTN - Direct  
 GNSS Control: WISCORS VRS



(b) HISTORY OF ORIGINAL CORNER ESTABLISHMENT

Original Surveyor:

Original Accessories:

Date of Survey Commenced:  
 Completed:

See previous monument record(s)

(b)(f)(g)(h) Description of monument found at this corner and if it was accepted, state all evidence (material, testimonial, occupational, plats, records, other monuments) used as a basis for accepting. If not accepted or if nothing was found, state evidence used as basis for establishing location. If re-established through lost corner proportionate methods, indicate all monuments, distances and directions used to establish. Indicate type of monument and sign post found or set.

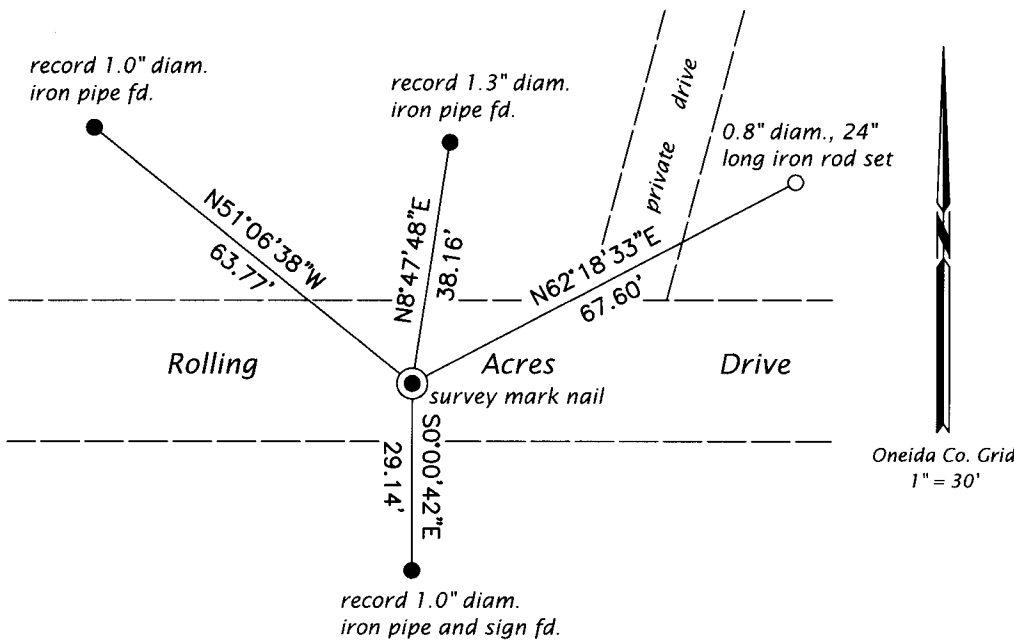
*This is a perpetuation of the following monument record(s) that comprise a complete history of the corner:*

*Dec. 24, 2001: USPLS Monument Record No. 3809260000 by James L. Will, PLS*

*July 24, 2019: I found and accepted the record monument, a Berntsen survey mark nail 2 ft. South of the road centerline. The record RIPCO reference monument is leaning and unusable. The record monument at Dorr's location is gone. The record 1.5" diam. iron pipe is leaning and unusable. I found or established accessories as shown below. I set a white vinyl sign post bearing North, 1.0 ft.*

*The coordinate value shown has been verified by at least one of the following methods: 1) comparison to a previously GPS determined published value; 2) the value is the average of two or more GPS observations at a markedly different time; 3) one or more distances were measured back to the GPS observed corner from temporary GPS observed offset locations.*

(c)(d)(e) Plan view of corner with ties to at least 4 witness monuments. If in disagreement with previously established corner, show the distances between the two corners and also indicate the ties to the disputed.



REGISTER OF DEEDS OFFICE  
 ONEIDA COUNTY  
 FILED

JAN 03 2020

KYLE J. FRANSON  
 REGISTER OF DEEDS

(i) I, Jeffrey W. Austin, Professional Land Surveyor No. S-1885, hereby certify that the corner location on this record was determined by me or under my direction and control and that this U.S. Public Land Survey Monument Record is correct and complete to the best of my knowledge and belief.

*[Handwritten Signature]*  
 Signature

DEC. 23, 2019  
 Date